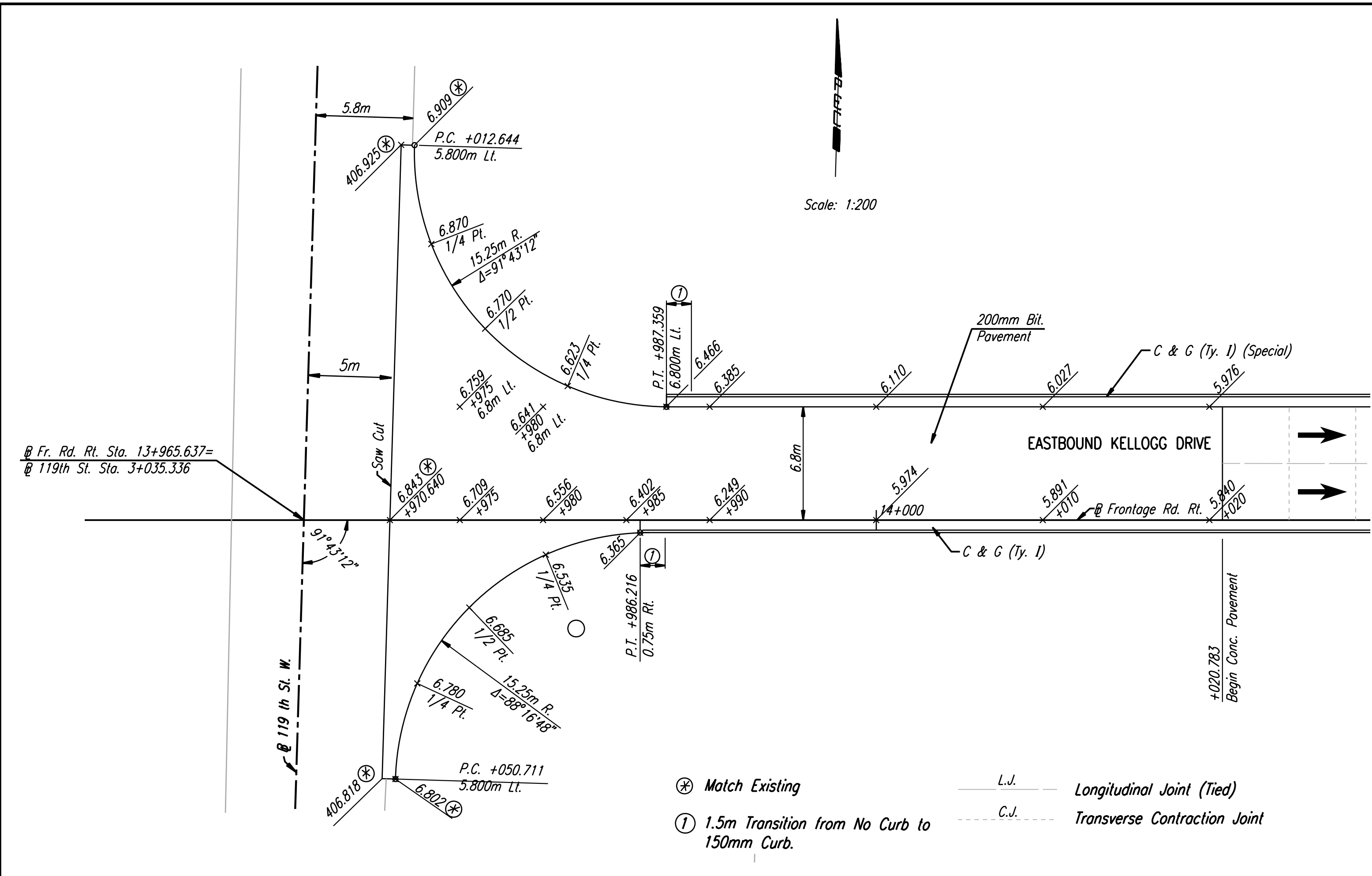
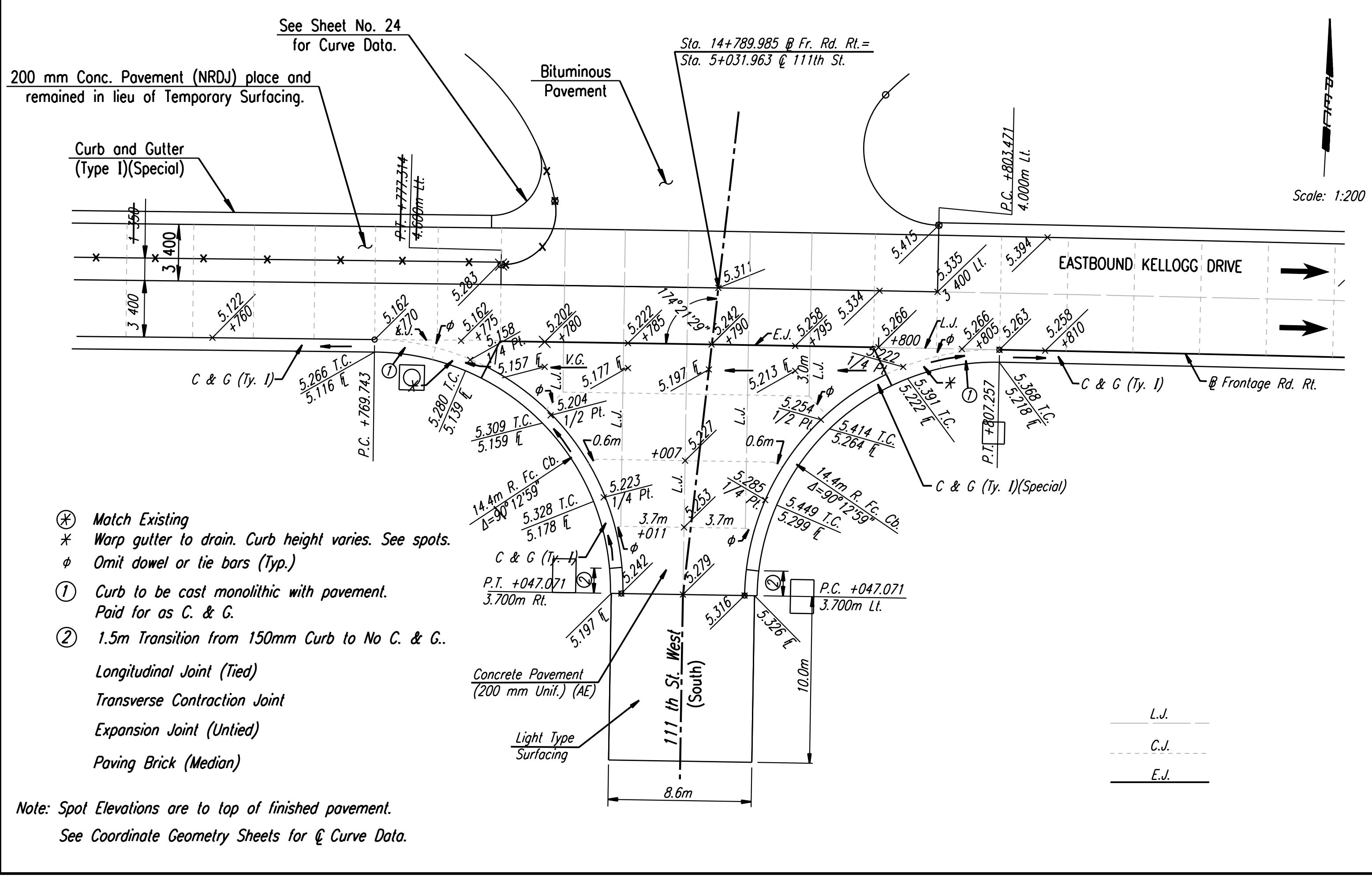


FHWA REGION NO.	STATE	PROJECT NO.	YEAR	SHEET NO.	TOTAL SHEETS
7	KANSAS	54-87 K-6657-01	2002	82	1122

DATE	
BY	
REFERENCES NOTED	
REFERENCES CHECKED	

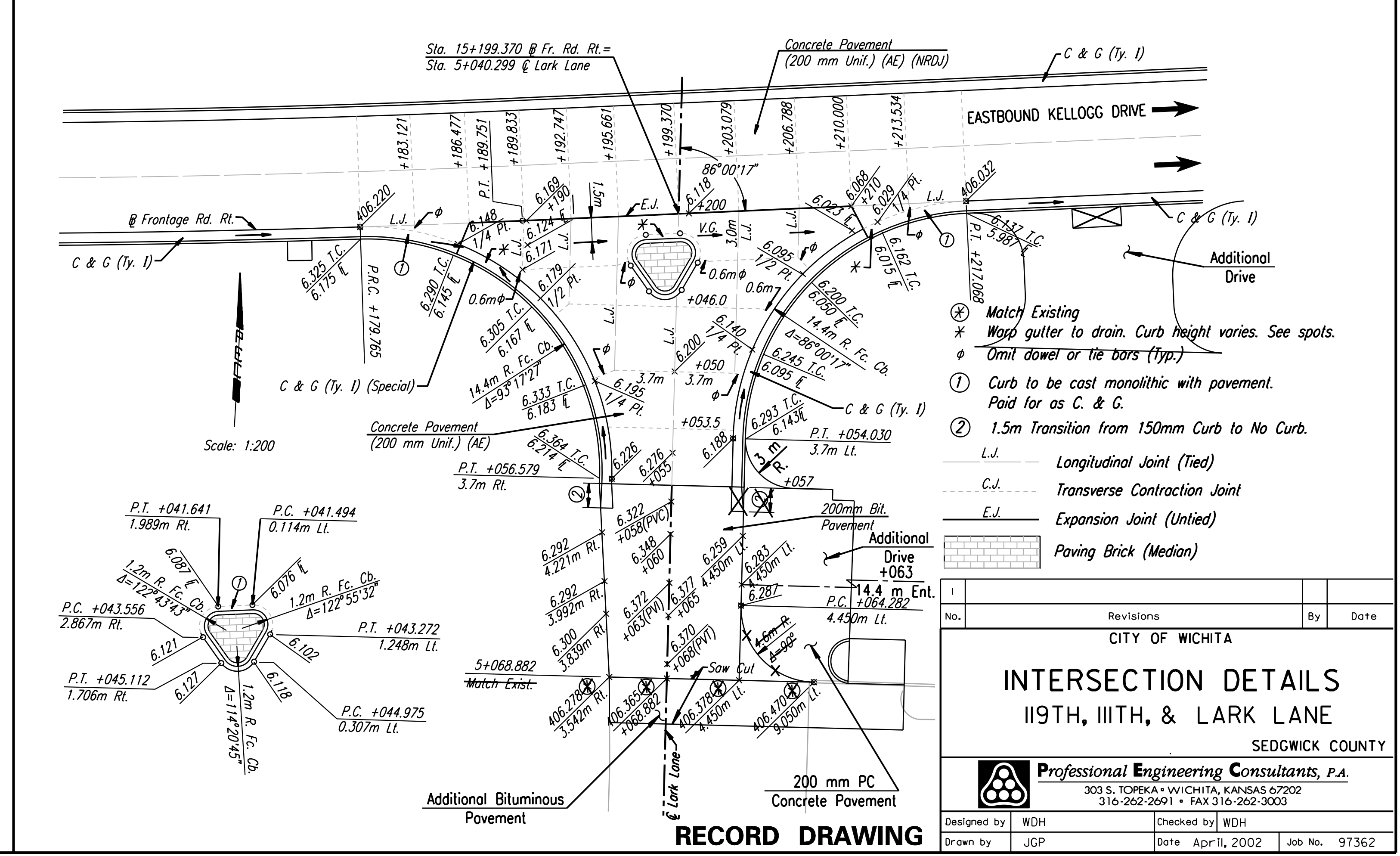


NOTE: Tie Bars were omitted across all Side Roads along Frontage Road Pavement.



- ⊗ Match Existing
 - * Warp gutter to drain. Curb height varies. See spots.
 - φ Omit dowel or tie bars (Typ.)
 - ① Curb to be cast monolithic with pavement. Paid for as C. & G.
 - ② 1.5m Transition from 150mm Curb to No C. & G.
- L.J. — Longitudinal Joint (Tied)
 - - - C.J. - - - Transverse Contraction Joint
 - - - E.J. - - - Expansion Joint (Untied)
 [Brick Pattern] Paving Brick (Median)

Note: Spot Elevations are to top of finished pavement.
 See Coordinate Geometry Sheets for \mathcal{Q} Curve Data.



- ⊗ Match Existing
 - * Warp gutter to drain. Curb height varies. See spots.
 - φ Omit dowel or tie bars (Typ.)
 - ① Curb to be cast monolithic with pavement. Paid for as C. & G.
 - ② 1.5m Transition from 150mm Curb to No Curb.
- L.J. — Longitudinal Joint (Tied)
 - - - C.J. - - - Transverse Contraction Joint
 - - - E.J. - - - Expansion Joint (Untied)
 [Brick Pattern] Paving Brick (Median)

RECORD DRAWING

CITY OF WICHITA			
INTERSECTION DETAILS			
119TH, 111TH, & LARK LANE			
SEDGWICK COUNTY			
Professional Engineering Consultants, P.A.			
303 S. TOPEKA • WICHITA, KANSAS 67202			
316-262-2691 • FAX 316-262-3003			
Designed by	WDH	Checked by	WDH
Drawn by	JGP	Date	Apr 11, 2002
		Job No.	97362

DSNR: WDH OPER: JGP SCALE: 1:200
 i:/1997/97362/As-Builts/dgn/s/SH_082-insect.dgn
 Last Rev: 8-10-07 By: gdr