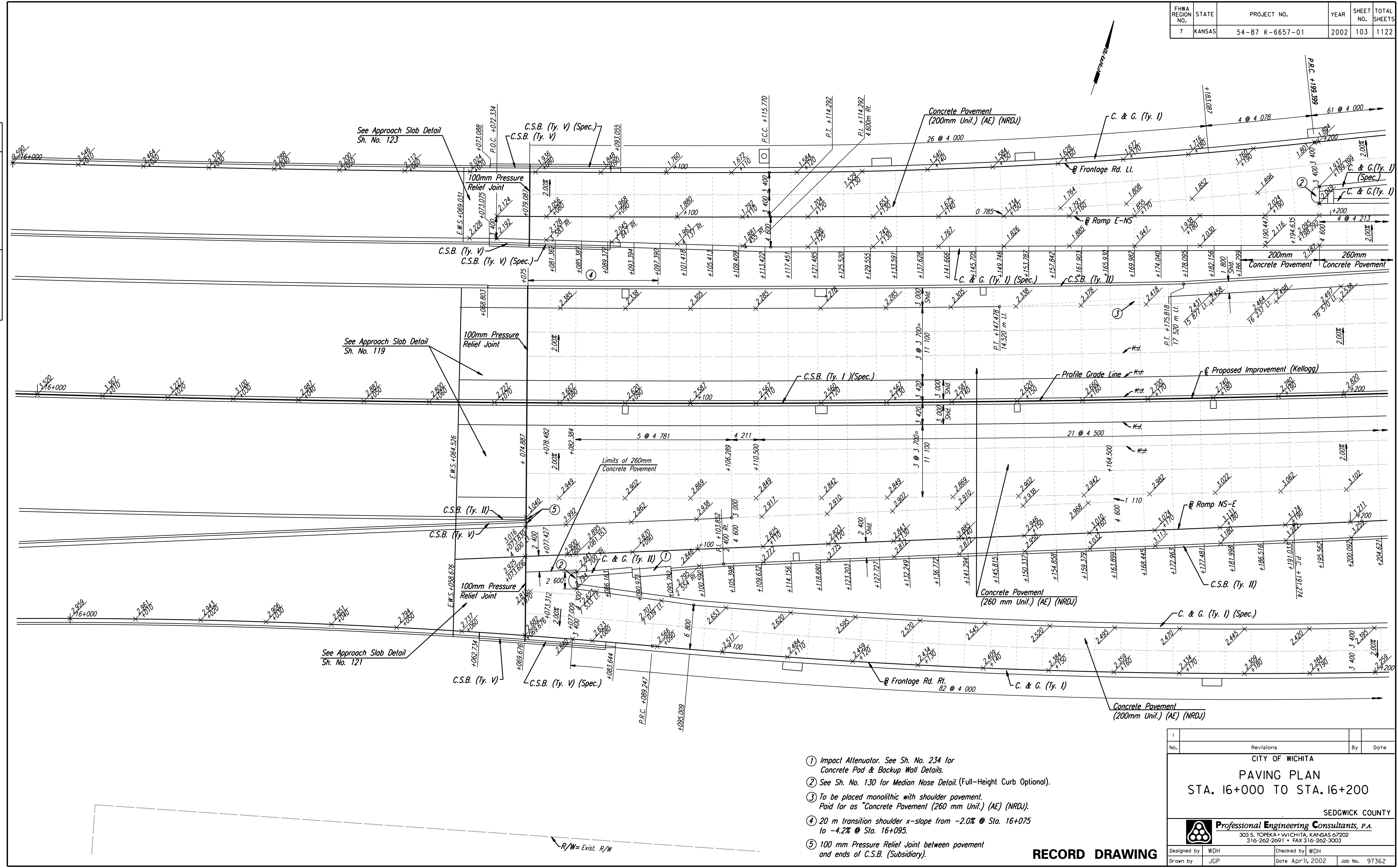


FHWA REGION NO.	STATE	PROJECT NO.	YEAR	SHEET NO.	TOTAL SHEETS
7	KANSAS	54-87 K-6657-01	2002	103	1122

DATE	BY
REFERENCES NOTED	REFERENCES CHECKED



DSNR: WDH OPER: JGP SCALE: 1:250
 i:/1997/97362/As-Builts/dgn's/Sh 103-pav160.dgn Last Rev: 8-13-07 By: gdr

- ① Impact Attenuator. See Sh. No. 234 for Concrete Pad & Backup Wall Details.
- ② See Sh. No. 130 for Median Nose Detail. (Full-Height Curb Optional).
- ③ To be placed monolithic with shoulder pavement. Paid for as "Concrete Pavement (260 mm Unit.) (AE) (NRDJ)".
- ④ 20 m transition shoulder x-slope from -2.0% @ Sta. 16+075 to -4.2% @ Sta. 16+095.
- ⑤ 100 mm Pressure Relief Joint between pavement and ends of C.S.B. (Subsidiary).

No.	Revisions	By	Date

CITY OF WICHITA
PAVING PLAN
STA. 16+000 TO STA. 16+200
SEDGWICK COUNTY

Professional Engineering Consultants, P.A.
303 S. TOPEKA • WICHITA, KANSAS 67202
 316-262-2691 • FAX 316-262-3003

Designed by	WDH	Checked by	WDH
Drawn by	JGP	Date	Apr 11, 2002
		Job No.	97362

RECORD DRAWING