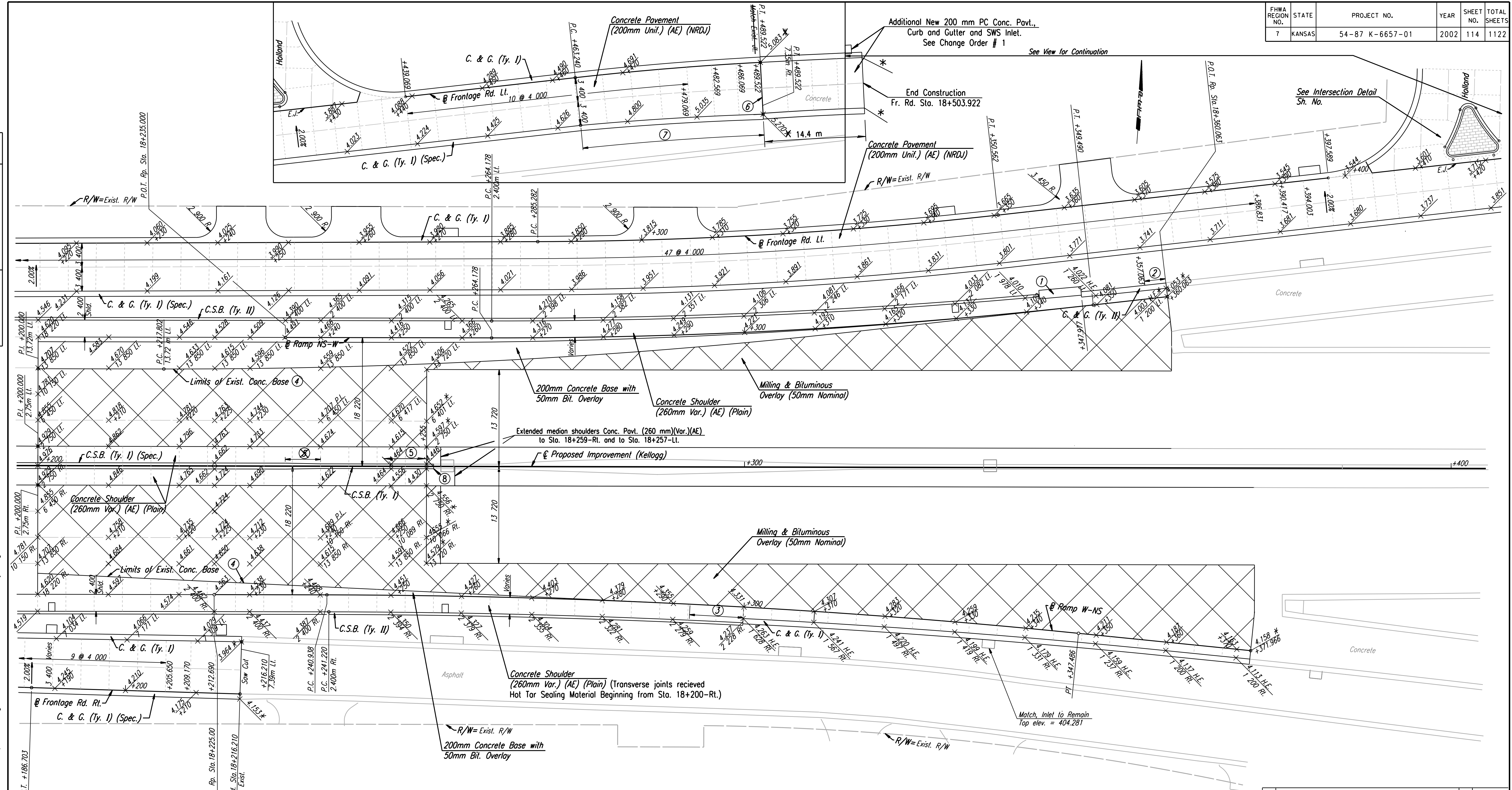


FHWA REGION NO.	STATE	PROJECT NO.	YEAR	SHEET NO.	TOTAL SHEETS
7	KANSAS	54-87 K-6657-01	2002	114	1122

DATE	
BY	
REFERENCES NOTED	
REFERENCES CHECKED	



- ① Impact Attenuator. See Sh. No. 234 for Concrete Pad & Backup Wall Details.
- ② 3.0 m transition from C. & G. (Ty. I) to C. & G. (Ty. II).
- ③ 7.6 m transition from C.S.B. (Ty. II) to C. & G. (Ty. I). Paid for as C.S.B. (Ty. II).
- ④ Saw cut asphalt @ edge of exist. conc. base. Drill & epoxy grout #16 x 600mm tie bars @ 900mm cts. into exist. concrete base.
- ⑤ Transition from CSB (Ty. I) (Spec.) @ 18+235.1 to CSB (Ty. I) @ 18+240.
- ⑥ Drill & grout smooth dowel bars into existing slab.
- ⑦ Width of lanes varies to match existing @ joint.
- ⑧ Install two (2) 25 x 450 mm Smooth Dowel Bars encased in 38 mm I.D. PVC Pipe with expansion material at tie-in to existing C.S.B.

* Match Existing. Contractor shall verify existing elevations prior to construction. Notify the engineer of deviations from elevations shown, so adjustments to proposed grade can be made if deemed necessary.

NOTE:
The bars were omitted across all Side Roads along Frontage Road Pavement.

RECORD DRAWING

DSNR: WDH OPER: JGP SCALE: 1:250
 I:/1997/97362/As-Built/dgn's/Sh 114-pav182.dgn Last Rev: 8-14-07 By: gbr

No.	Revisions	By	Date

CITY OF WICHITA
PAVING PLAN
 STA. 18+200 TO STA. 18+400
 SEDGWICK COUNTY

Professional Engineering Consultants, P.A.
 303 S. TOPEKA • WICHITA, KANSAS 67202
 316-262-2691 • FAX 316-262-3003

Designed by	WDH	Checked by	WDH
Drawn by	JGP	Date	April, 2002
		Job No.	97362