

FHWA REGION NO.	STATE	PROJECT NO.	YEAR	SHEET NO.	TOTAL SHEETS
7	KANSAS	54-87 K-6657-01	2002	237	1122

VOLUME I

VOLUME II

VOLUME III

VOLUME IV

VOLUME V

DATE	
BY	
REFERENCES NOTED	
REFERENCES CHECKED	

- 1 Title Sheet
- 2 Index of Sheets
- 3-6 Typical Section - Mainline
- 7-11 Typical Section - Sideroads
- 12 Foundation Treatment and Compaction of Earthwork
- 13-14 Super-elevation and Cross-slope Transition Diagrams
- 15 General Notes
- 16-63 Plan, Geometric Coordinate, and Profile Sheets (US-54)
- 64-69 Plan and Profile Sheets (Maize Road)
- 70-75 Plan and Profile Sheets (Tyler Road)
- 76-81 Ramp Profiles
- 82-92 Intersection Details
- 93-116 Paving Plans
- 117-126 Concrete Bridge Approach Pavement Details
- 127-134 Pavement Details
- 135-146 Inlet and Manhole Details
- 147 Edge Drain Details (Deleted)
- 148-150 Headwall Details
- 151-162 Storm Sewer Plans
- 163-180 Storm Sewer Profiles
- 181-195 Storm Sewer Schedules
- 196-227 Waterline Plans, Profiles, and Details
- 228-233 Concrete Safety Barrier Details
- 234-236 QuadGuard Details
- 196-227 (Not included - previously submitted to Water Dept.)

- 237 Index of Sheets
- 238 Cast in Place Retaining Walls General Notes
- 238A Planter Wall Details
- 239 Cast-in-place Retaining Walls Architectural Details
- 240-250 Retaining Wall and Planter Plans (Cast-In-Place)
- 251 Planter Wall Handrail Details
- 252-270 Retaining Wall and Planter Elevations (Cast-In-Place)
- 271-364 Retaining Wall and Planter Details (Cast-In-Place)
- 365-368 Retaining Wall #9 Details
- 369-374 Retaining Wall #10 Details
- 375-376 MSE Retaining Wall General Notes
- 377-386 MSE Retaining Wall Plans and Profiles
- 387 Metal End Section
- 388 Concrete End Sections
- 389-397 2-2.4x0.9 RCB Details (Sta 14+443.483)
- 398-399 1.8x0.9 RFB Details (Sta 15+407.000)
- 400-410 2.4x1.8 RFB Details (Sta 17+090.000)
- 411-417 3.4x2.4 RFB Details (Sta .17+121.754 to 17+420)
- 418 RCB Transition Details (3.4x2.4 to 3.0x2.1)
- 419-425 3.0x2.1RCB Details (Sta 17+423 to 17+776)
- 426-427 2.1x1.2 RCB Details (Maize Sta. 4+146)
- 428-429 2.1x1.2 RCB Details (Tyler Sta. 5+311)
- 430-433 RCB Standard Details

- 434 Index of Sheets
- 435-476 Bridge No. 54-87-19.05 (489) W.B. & Bridge No. 54-87-19.06(491) E.B.
- 477-498 Bridge No. 54-87-19.32(495) F.W.B.
- 499-531 Bridge No. 54-87-19.30(493) E.B. & Bridge No. 54-87-19.31(494) W.B.
- 532-564 Bridge No. 54-87-19.29(492) F.E.B.
- 565-606 Bridge No. 54-87-20.13(496) W.B. & Bridge No. 54-87-20.12(497) E.B.
- 607-611 Bridge Standards
- 612-623 Summary of Quantities
- 624 Earthwork Balances
- 625 Recapitulation of Quantities
- 626-631 Temporary Project Water Pollution Control (Soil Erosion)
- 632-654 Lighting Plans and Details
- 655-668 Traffic Signals

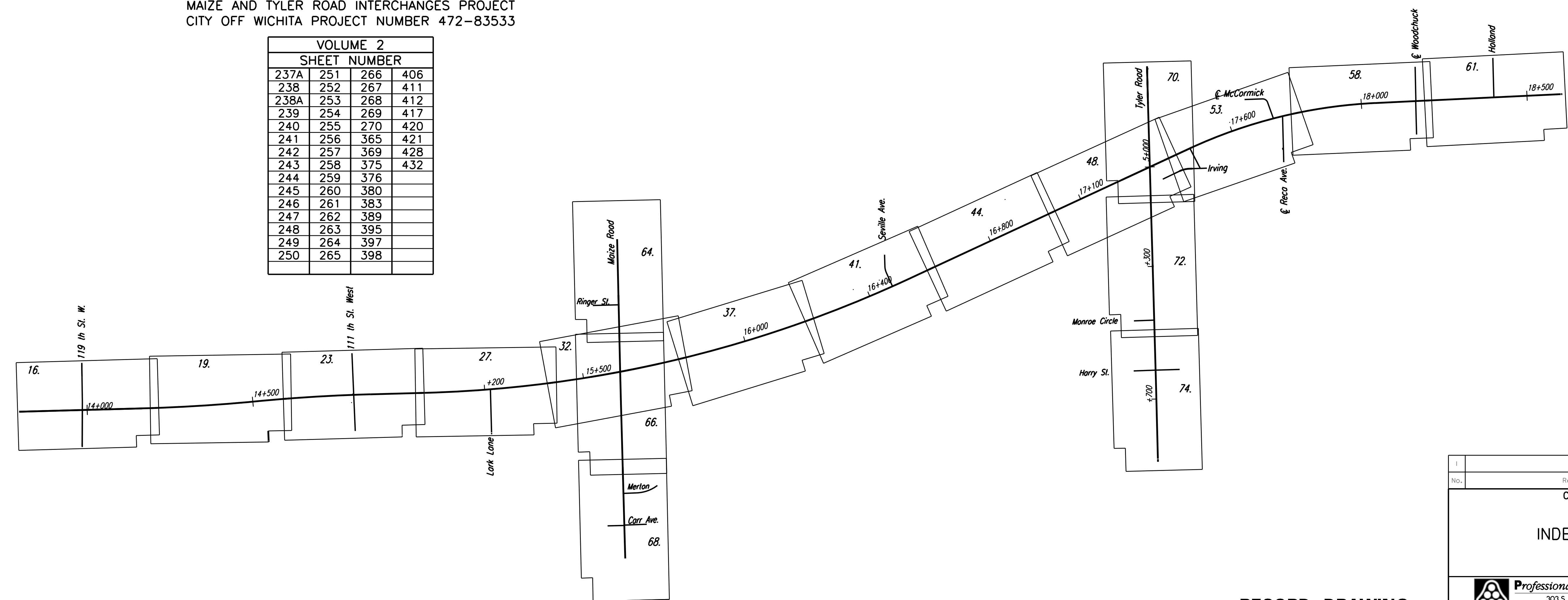
- 669 Index of Sheets
- 670-792 Signing and Pavement Marking
- 793-794 Construction Sequence
- 795-823 Traffic Control
- 823A Traffic Control
- 824-846 Traffic Control
- 847-894 Landscaping and Irrigation Plans and Details
- 894A Wetland Mitigation Plan
- 895-896 Drainage Maps
- 870 871A-871N Replaces Sheet No. 847-869

- 897 Index of Sheets
- 898-1048 Cross Sections - Mainline and Frontage Roads
- 1049-1060 Cross Sections - Cowskin
- 1061-1081 Cross Sections - Maize Road
- 1082-1106 Cross Sections - Tyler Road
- 1107-1110 Cross Sections - Woodchuck
- 1111-1114 Cross Sections - Seville
- 1115 Cross Sections - Lark
- 1116 Cross Sections - Irving
- 1117-1118 Cross Sections - Holland
- 1119-1120 Cross Sections - Channel Change at Sta. 14+425
- 1121-1122 Cross Sections - Channel Change at Sta. 17+090

SHEET INDEX FOR RECORD DRAWING EDITS

WEST KELLOGG FREEWAY
 MAIZE AND TYLER ROAD INTERCHANGES PROJECT
 CITY OF WICHITA PROJECT NUMBER 472-83533

VOLUME 2			
SHEET NUMBER			
237A	251	266	406
238	252	267	411
238A	253	268	412
239	254	269	417
240	255	270	420
241	256	365	421
242	257	369	428
243	258	375	432
244	259	376	
245	260	380	
246	261	383	
247	262	389	
248	263	395	
249	264	397	
250	265	398	



DSNR: WDH OPER: JGP SCALE: 1:1
 i:/1997/97362/As-Builts/dgn s/Vol_2/Sh 237-index.dgn Last Rev: 8-21-07 By: gdr

RECORD DRAWING

No.	Revisions	By	Date
CITY OF WICHITA			
INDEX OF SHEETS			
SEDGWICK COUNTY			
Professional Engineering Consultants, P.A. 303 S. TOPEKA • WICHITA, KANSAS 67202 316-262-2691 • FAX 316-262-3003			
Designed by	WDH	Checked by	
Drawn by	JGP	Date	April, 2002
		Job No.	97362