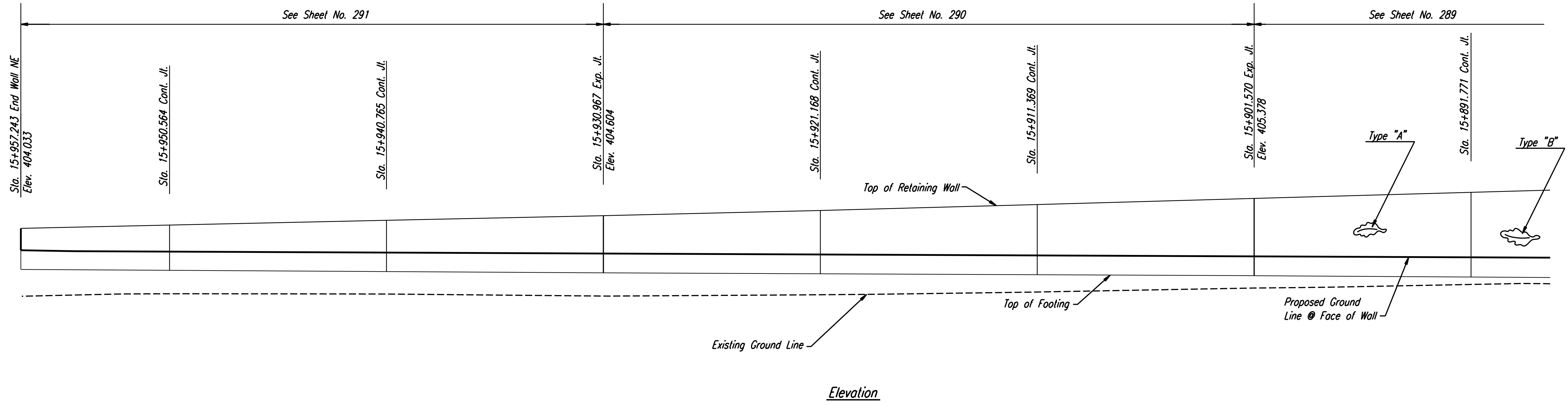
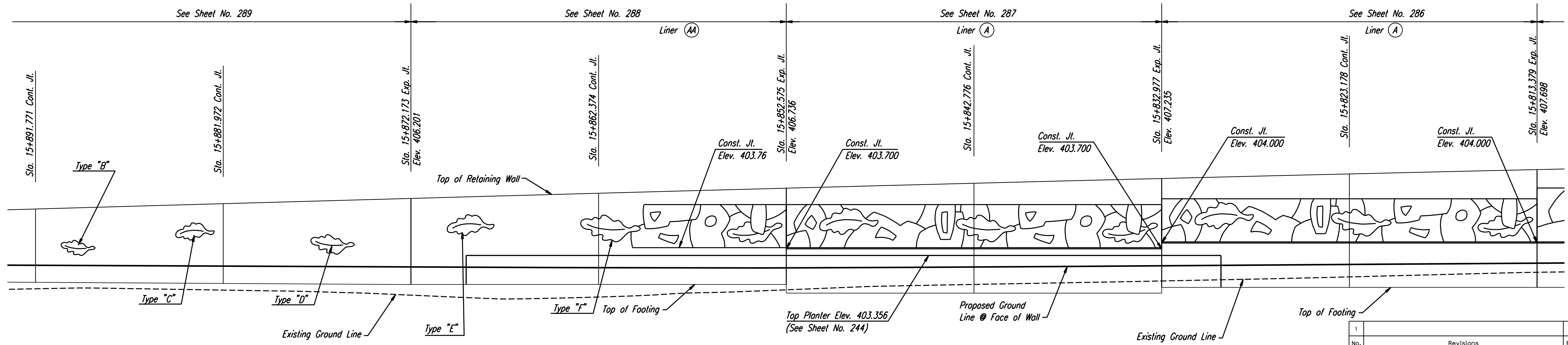


STATE	PROJECT NO.	YEAR	SHEET NO.	TOTAL SHEETS
KANSAS	54-87 K-6657-01	2002	257	1122

DATE	
BY	
REFERENCES NOTED	
REFERENCES CHECKED	



Elevation



Elevation

NOTE:
 Mechanically Stabilized Earth (MSE) Walls were constructed in lieu of Cast-in-Place Retaining Walls.
 See Submittal No.'s 21.1, 21.1.A, 21.2.A, 21.2.B, 21.2.C, 21.3.A, 34.1.A, 34.1.B, 34.2.A, 34.3.A and 34.3.
 Also see Special Provision 90M-110-R3.

RECORD DRAWING

No.	Revisions	By	Date

CITY OF WICHITA
KELLOGG
 CAST-IN-PLACE RETAINING WALLS
 MAIZE NE ELEVATION
 SEDGWICK COUNTY

Professional Engineering Consultants, P.A.
 303 S. TOPEKA • WICHITA, KANSAS 67202
 316-262-2691 • FAX 316-262-3003

Designed by	PDF	Checked by	RAS
Drawn by	JSB	Date	April, 2002
		Job No.	97362

DSNR: WDH OPER: JGP SCALE: 1:100
 i:/1997/97362/As-Builts/dgn's/Vol 2/Sh 257-maizeNE.dgn Last Rev: 8-22-07 By: gdr