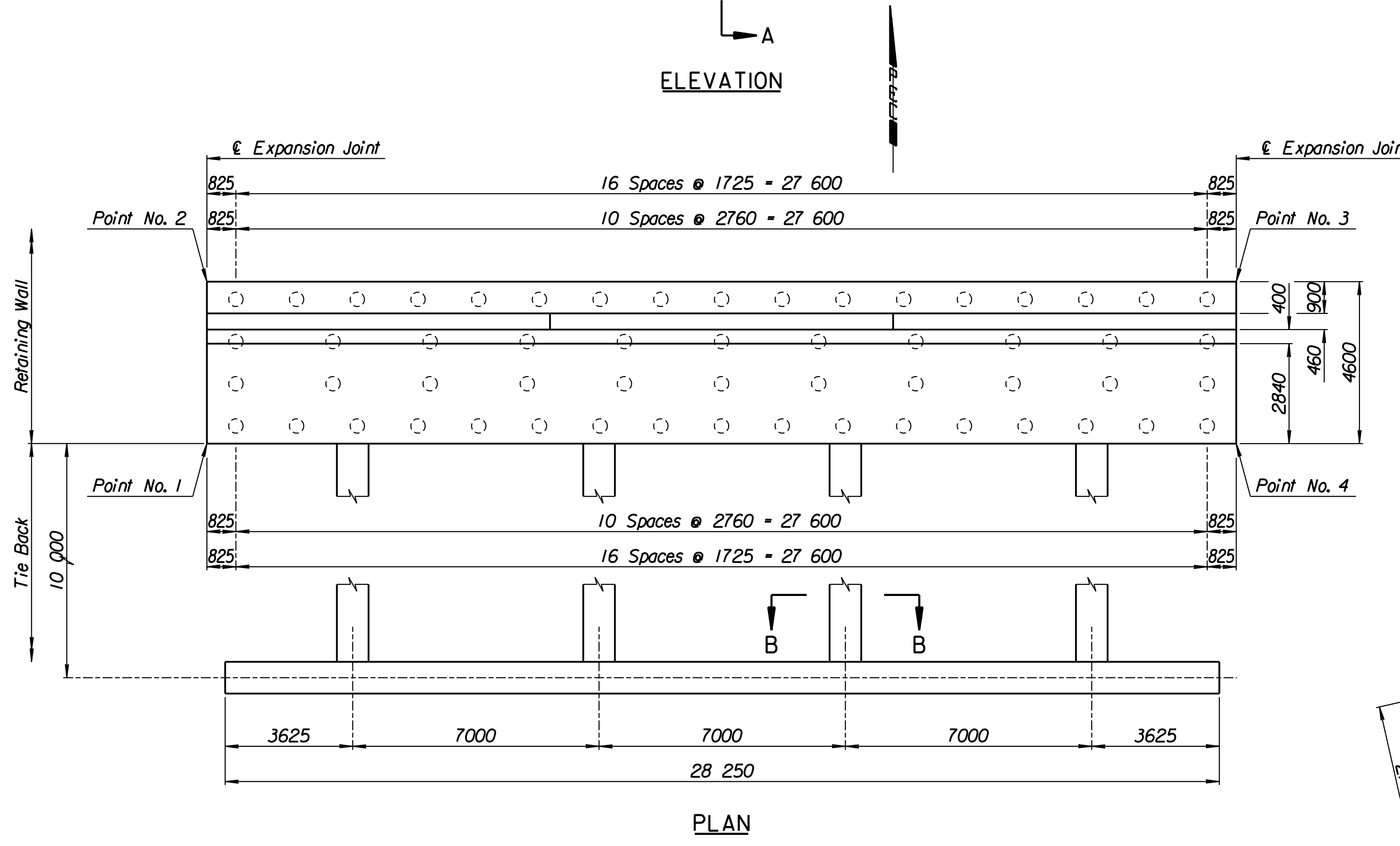
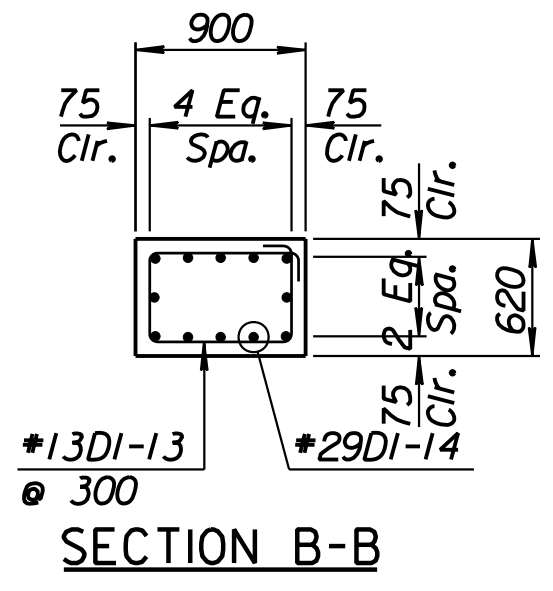
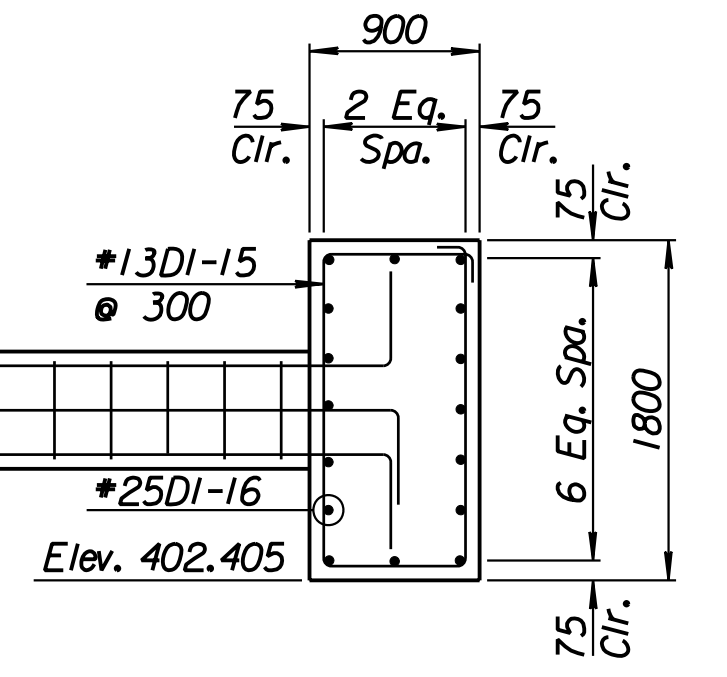
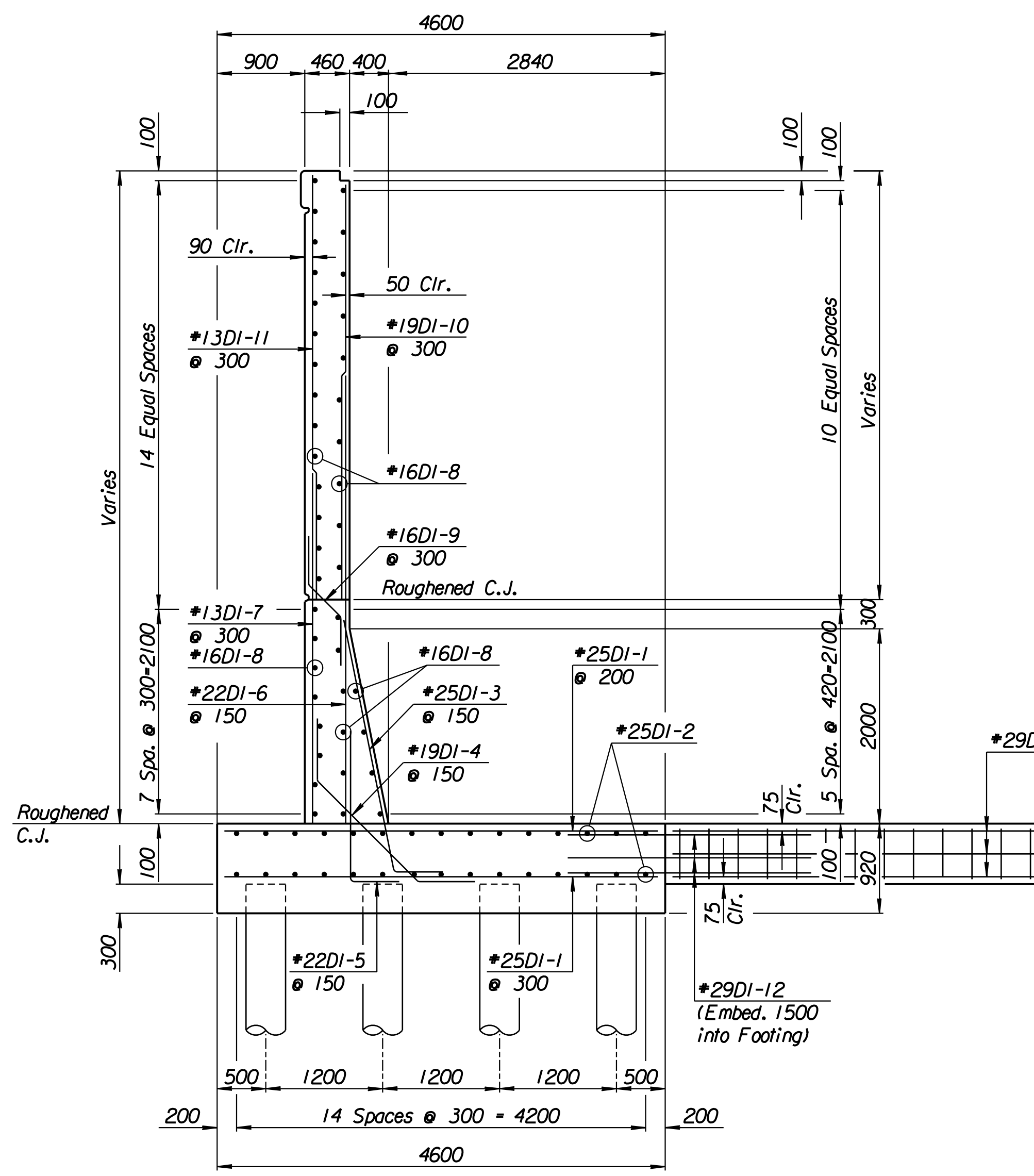
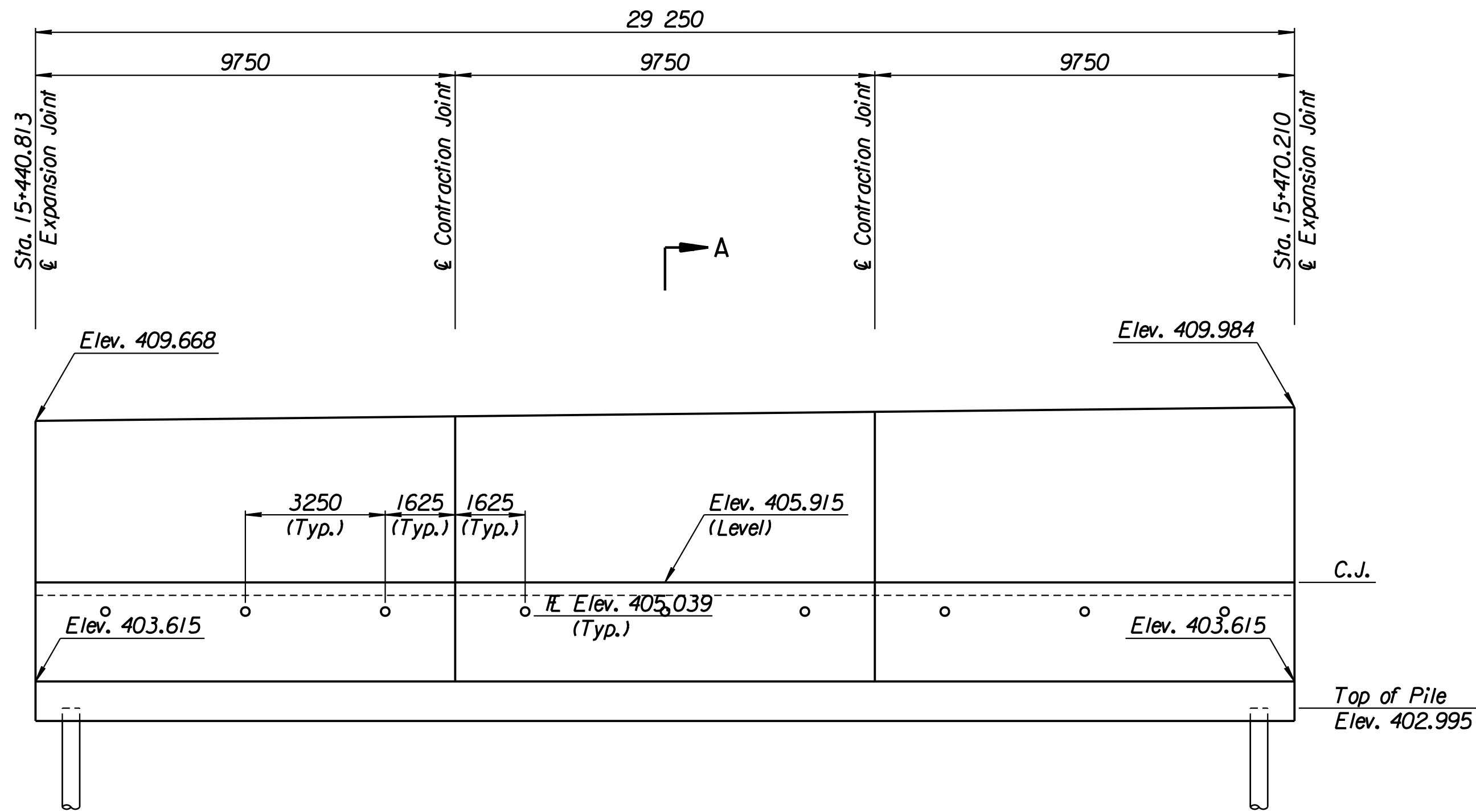


STATE	PROJECT NO.	YEAR	SHEET NO.	TOTAL SHEETS
KANSAS	54-87 K-6657-01	2002	274	1122

LAYOUT INFORMATION				
Point No.	North Coordinate	East Coordinate	Station	Offset
1	511372.697	491441.805	15+440.813	14.795 Lt.
2	511377.251	491441.157	15+440.813	19.395 Lt.
3	511381.482	491470.092	15+470.210	19.395 Lt.
4	511376.933	491470.776	15+470.210	14.795 Lt.

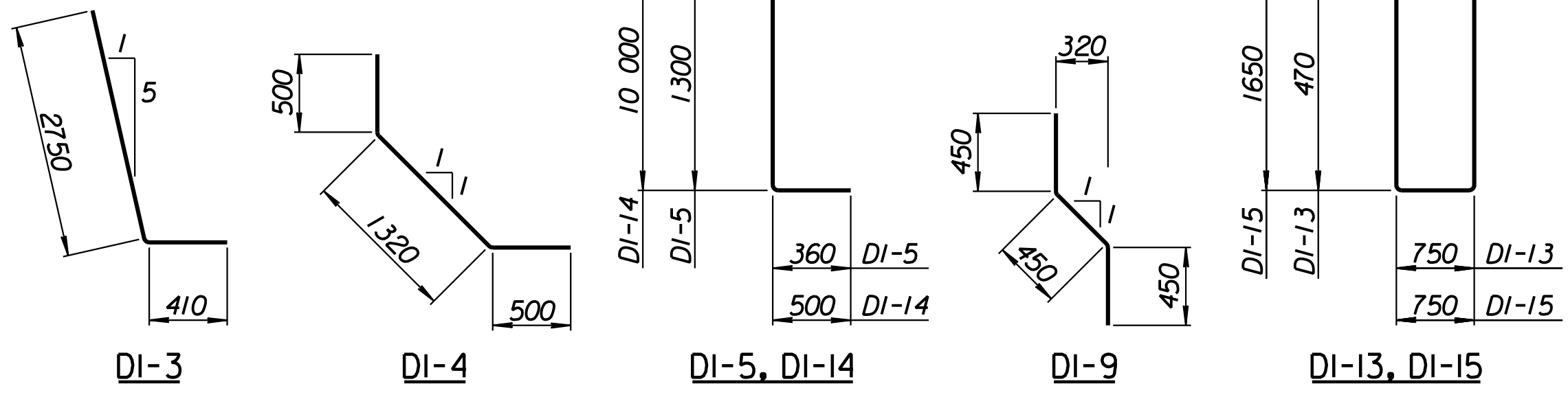
REINFORCING STEEL							
Straight Bars				Bent Bars			
Mark	Size	Number	Length	Mark	Size	Number	Length
DI-1	*25	246	4520	DI-3	*25	195	3160
DI-2	*25	60	15 540	DI-4	*19	195	2320
DI-6	*22	195	3720	DI-5	*22	195	1660
DI-7	*13	99	3230	DI-9	*16	99	1350
DI-8	*16	126	9650				
DI-10	*19	99	3600				
DI-11	*13	99	3700				
DI-12	*29	48	4000				

WALL QUANTITIES		
Item	Quantity	Unit
Pressure Grouted Pile (406 mm)	672.0	m
Concrete (Grade 30)(AE)	218.8	m ³
Reinforcing Steel (Grade 420)	19 317	kg
Class III Excavation	235.2	m ³



TIE BACK REINFORCING STEEL							
Straight Bars				Bent Bars			
Mark	Size	Number	Length	Mark	Size	Number	Length
DI-16	*25	32	15 040	DI-13	*13	128	2740
				DI-14	*29	48	10 500
				DI-15	*13	94	5100

TIE BACK QUANTITIES		
Item	Quantity	Unit
Concrete (Grade 30)(AE)	67.1	m ³
Reinforcing Steel (Grade 420)	5288	kg



RECORD DRAWING

1			
No.	Revisions	By	Date
CITY OF WICHITA			
MAIZE NORTHWEST WALL			
STA. 15+440.813 TO STA. 15+470.210			
SEDGWICK COUNTY			
Professional Engineering Consultants, P.A. 303 S. TOPEKA • WICHITA, KANSAS 67202 316-262-2691 • FAX 316-262-3003			
Designed by	P.D.F.	Checked by	R.A.S.
Drawn by	W.L.L.	Date	Apr. 2002
		Job No.	97362

Drawn by: wil
 Plotted by: drp
 3-25-2002
 I:\1997\97362\As-Built\As-Built.dgn\Vol 2\Sh 274-Maize-NWWall-4.dgn Last Rev: 8-22-07 By: gdr