

STATE	PROJECT NO.	YEAR	SHEET NO.	TOTAL SHEETS
KANSAS	54-87 K-6657-01	2002	282	1122

### LAYOUT INFORMATION

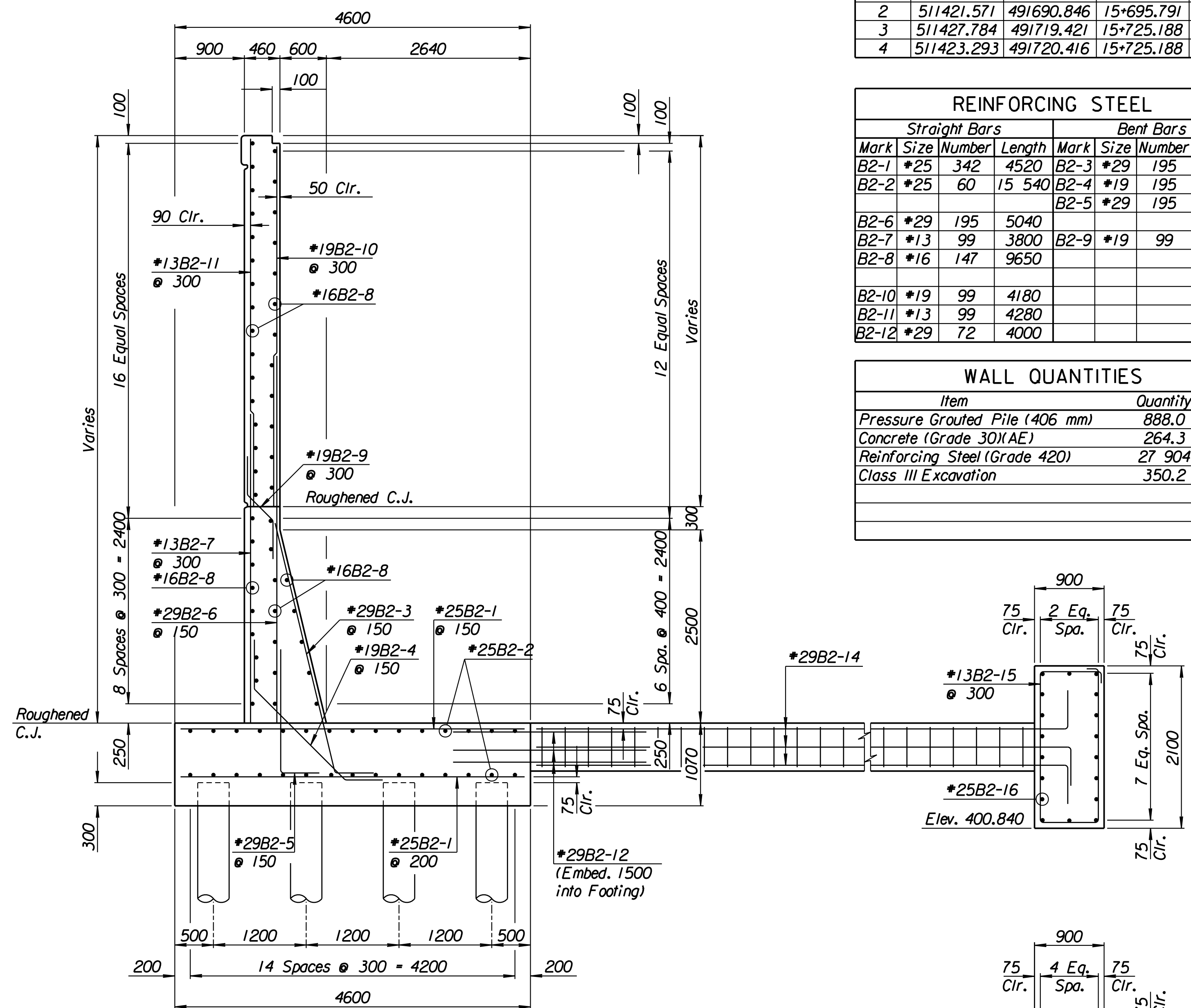
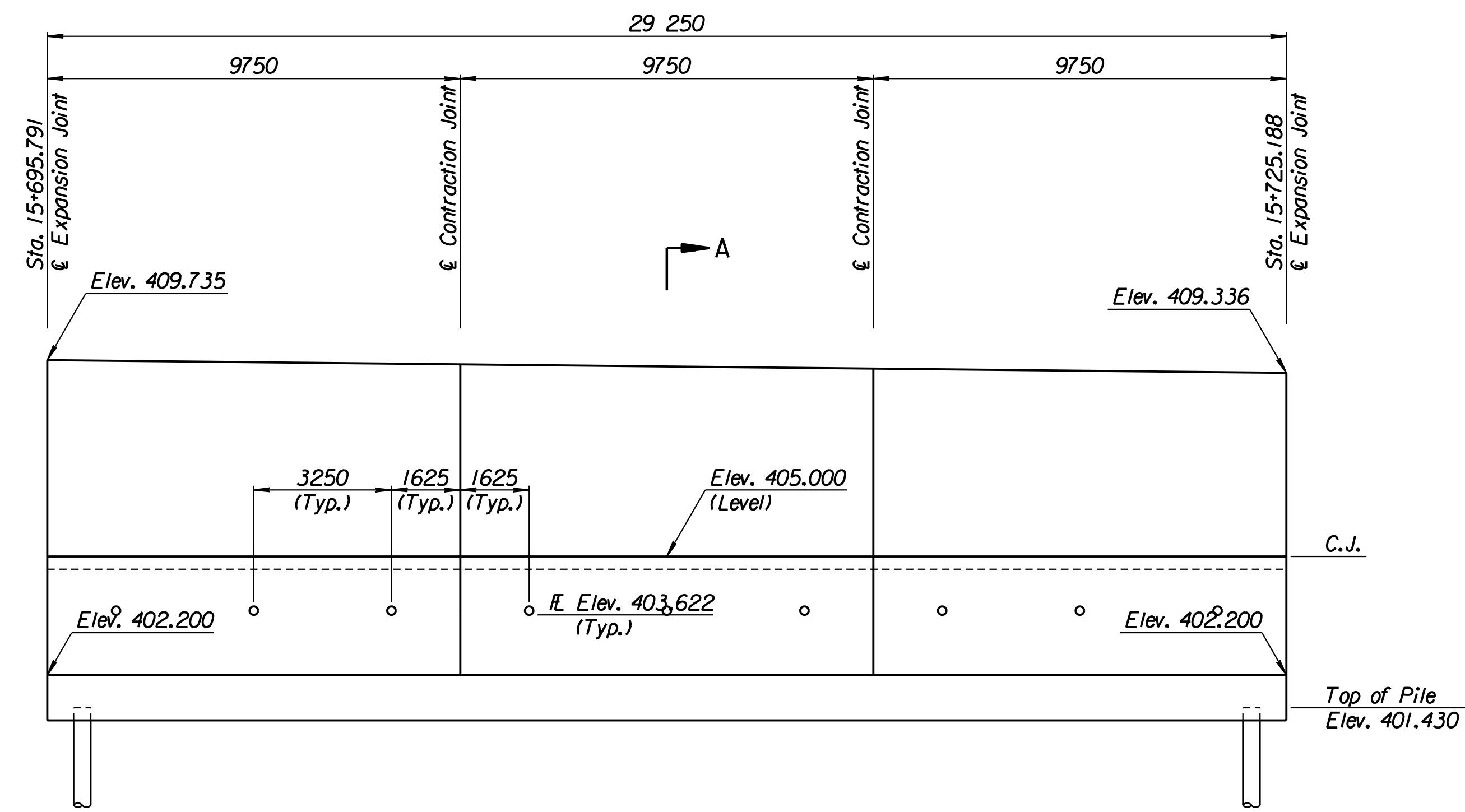
Point No.	North Coordinate	East Coordinate	Station	Offset
1	511417.072	491691.805	15+695.791	14.795 Lt.
2	511421.571	491690.846	15+695.791	19.395 Lt.
3	511427.784	491719.421	15+725.188	19.395 Lt.
4	511423.293	491720.416	15+725.188	14.795 Lt.

### REINFORCING STEEL

Straight Bars				Bent Bars			
Mark	Size	Number	Length	Mark	Size	Number	Length
B2-1	*25	342	4520	B2-3	*29	195	3940
B2-2	*25	60	15 540	B2-4	*19	195	2620
B2-6	*29	195	5040	B2-5	*29	195	2500
B2-7	*13	99	3800	B2-9	*19	99	1350
B2-8	*16	147	9650				
B2-10	*19	99	4180				
B2-11	*13	99	4280				
B2-12	*29	72	4000				

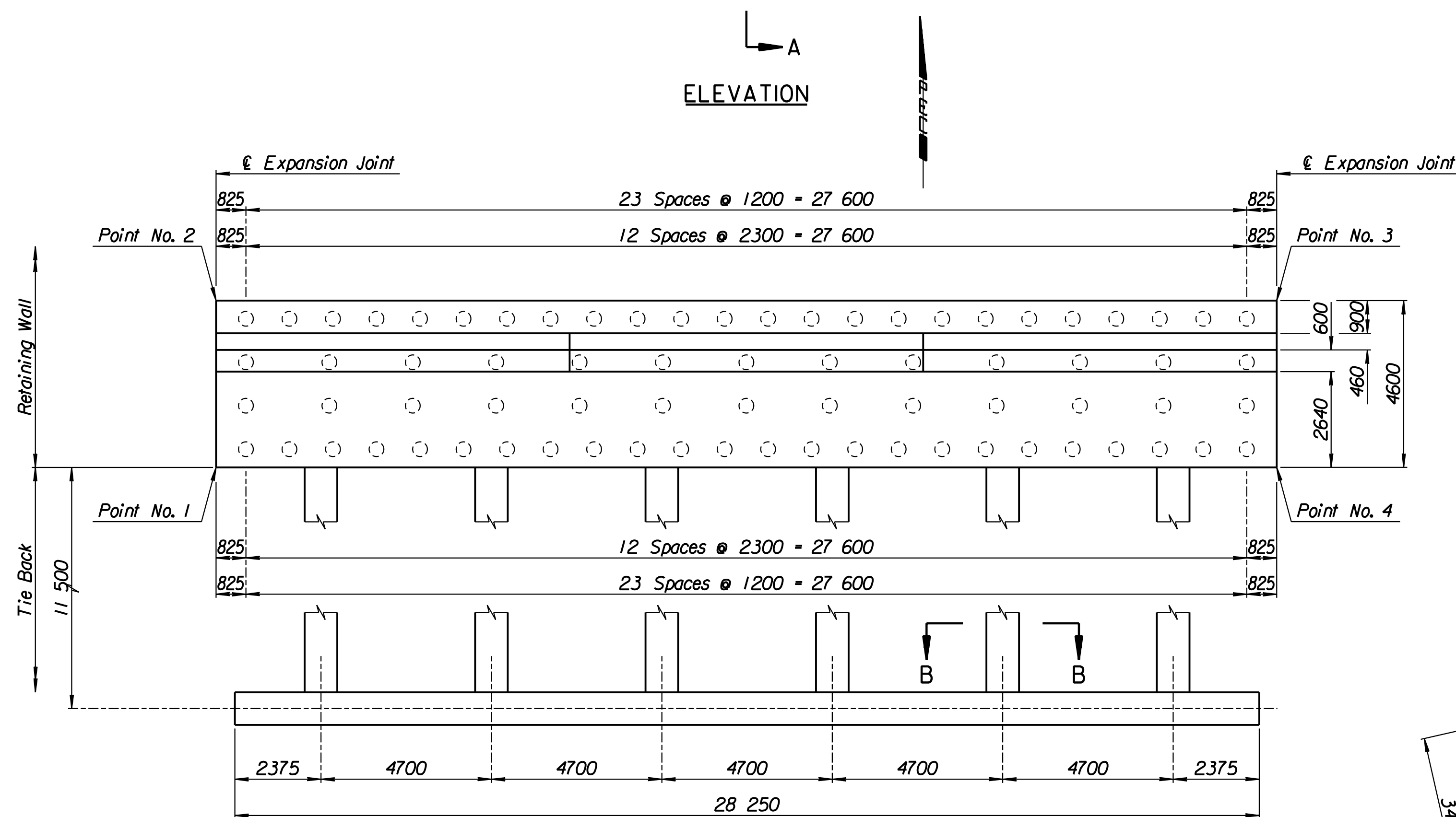
### WALL QUANTITIES

Item	Quantity	Unit
Pressure Grouted Pile (406 mm)	888.0	m
Concrete (Grade 30)(AE)	264.3	m <sup>3</sup>
Reinforcing Steel (Grade 420)	27 904	kg
Class III Excavation	350.2	m <sup>3</sup>



SECTION A-A

SECTION B-B



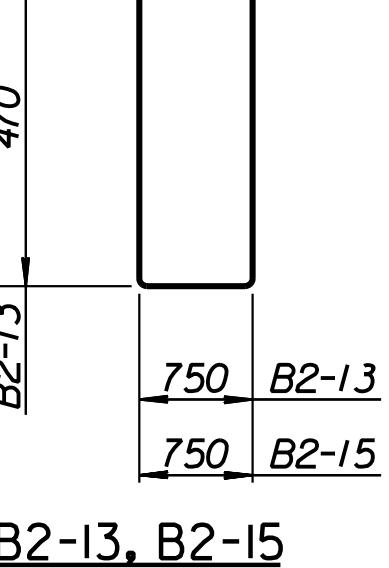
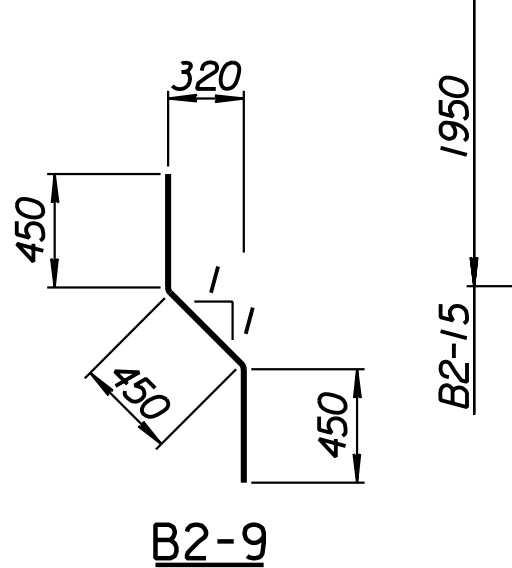
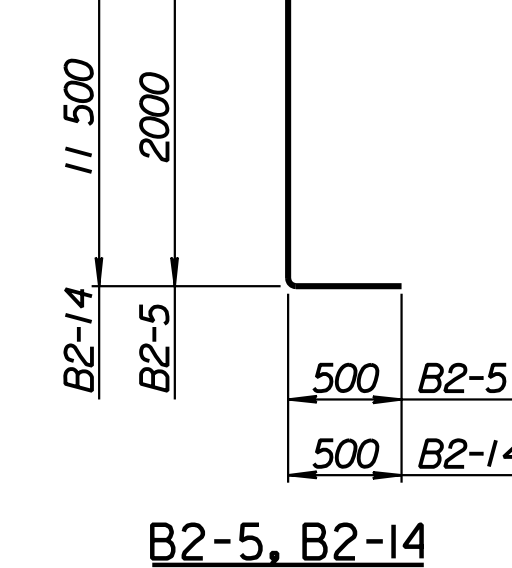
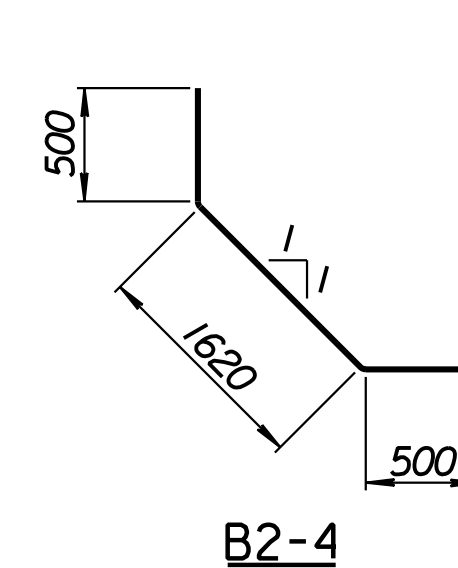
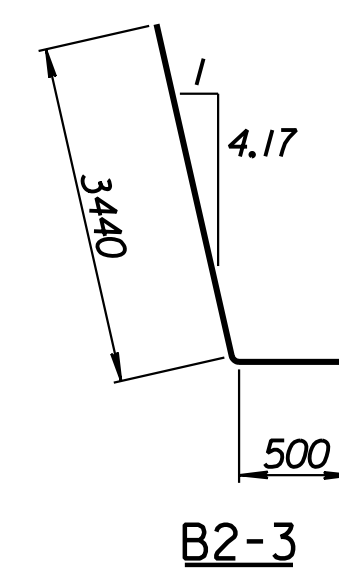
PLAN

#### TIE BACK REINFORCING STEEL

Straight Bars				Bent Bars			
Mark	Size	Number	Length	Mark	Size	Number	Length
B2-16	*25	36	15 040	B2-13	*13	222	2740
				B2-14	*29	72	12 000
				B2-15	*13	94	5700

#### TIE BACK QUANTITIES

Item	Quantity	Unit
Concrete (Grade 30)(AE)	90.4	m <sup>3</sup>
Reinforcing Steel (Grade 420)	7660	kg



Drawn by: wil  
 Plotted by: drp  
 3-25-2002  
 1:1997197362/As-Built/dgn/s/Vol 2/Sh 282-Maize-NE-wall-7.dgn  
 Last Rev: 8-22-07 By: gdr

No.	Revisions	By	Date

CITY OF WICHITA

## MAIZE NORTHEAST WALL

STA. 15+695.791 TO STA. 15+725.188

SEDGWICK COUNTY

Professional Engineering Consultants, P.A.

303 S. TOPEKA • WICHITA, KANSAS 67202  
316-262-2691 • FAX 316-262-3003

Designed by P.D.F.      Checked by R.A.S.  
 Drawn by W.L.L.      Date Apr. 2002      Job No. 97362

**RECORD DRAWING**