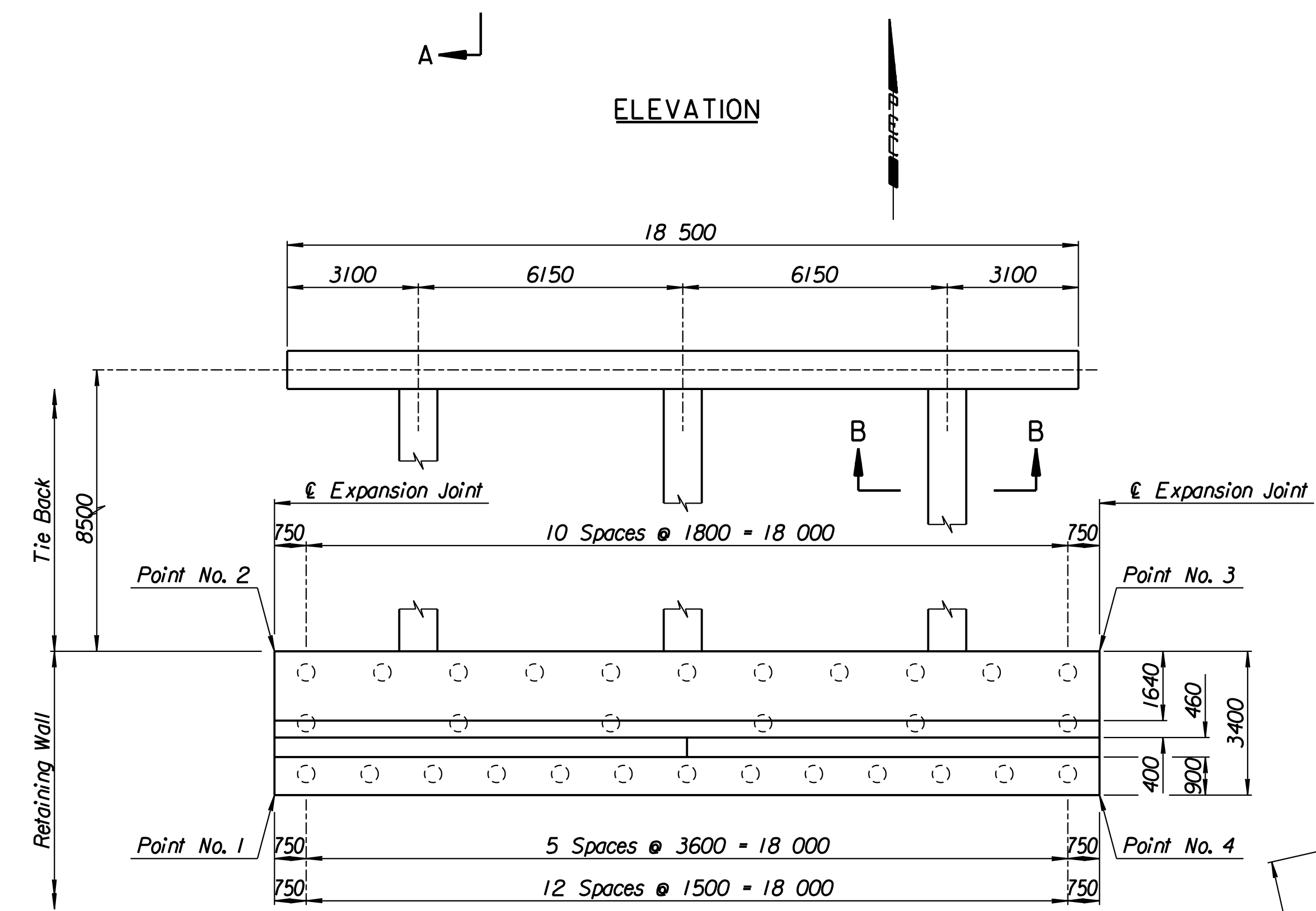
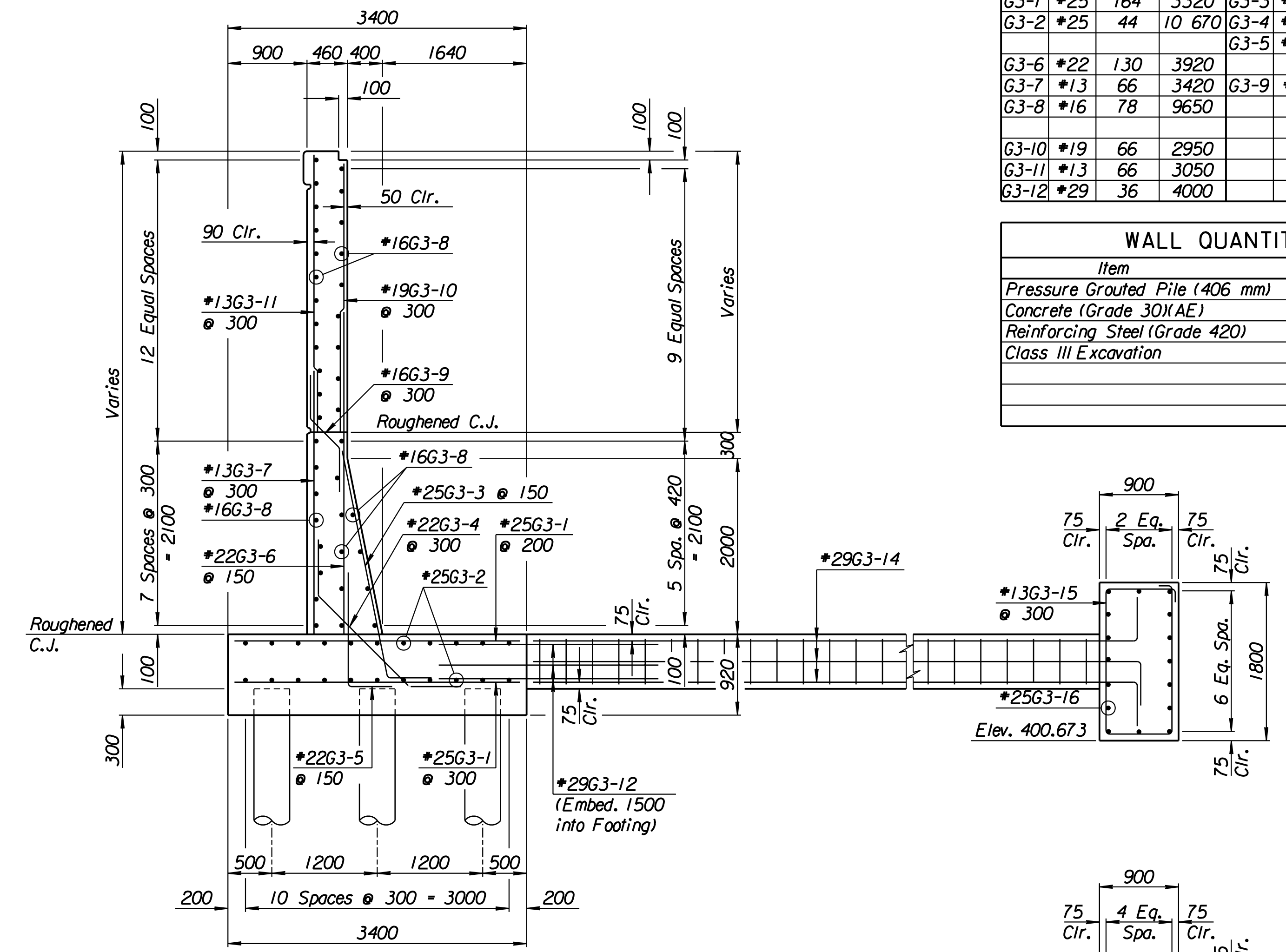
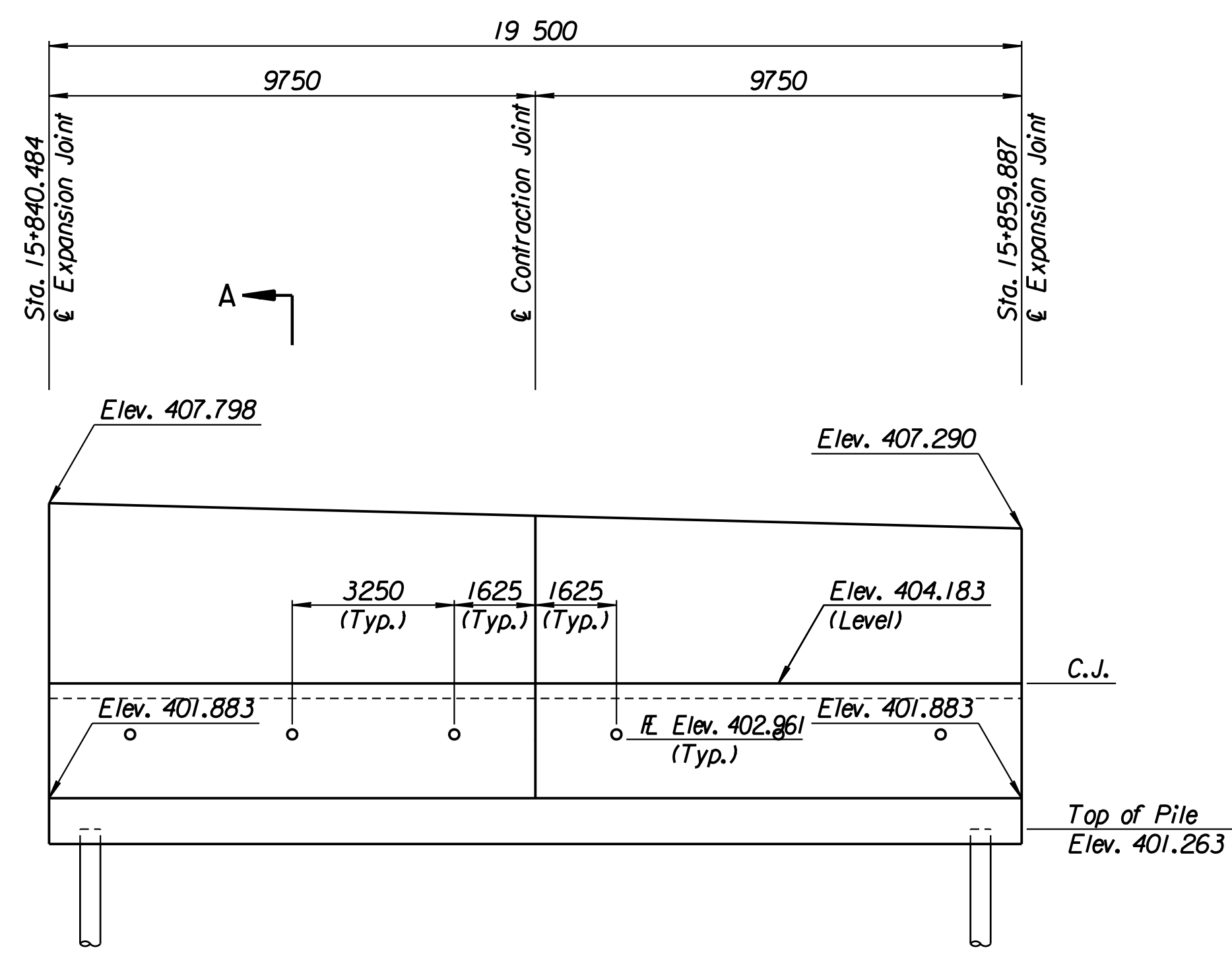


STATE	PROJECT NO.	YEAR	SHEET NO.	TOTAL SHEETS
KANSAS	54-87 K-6657-01	2002	298	1122

LAYOUT INFORMATION				
Point No.	North Coordinate	East Coordinate	Station	Offset
1	511416.747	491840.559	15+840.484	19.395 Rt.
2	511420.042	491839.721	15+840.484	15.995 Rt.
3	511424.898	491858.593	15+859.887	15.995 Rt.
4	511421.608	491859.449	15+859.887	19.395 Rt.

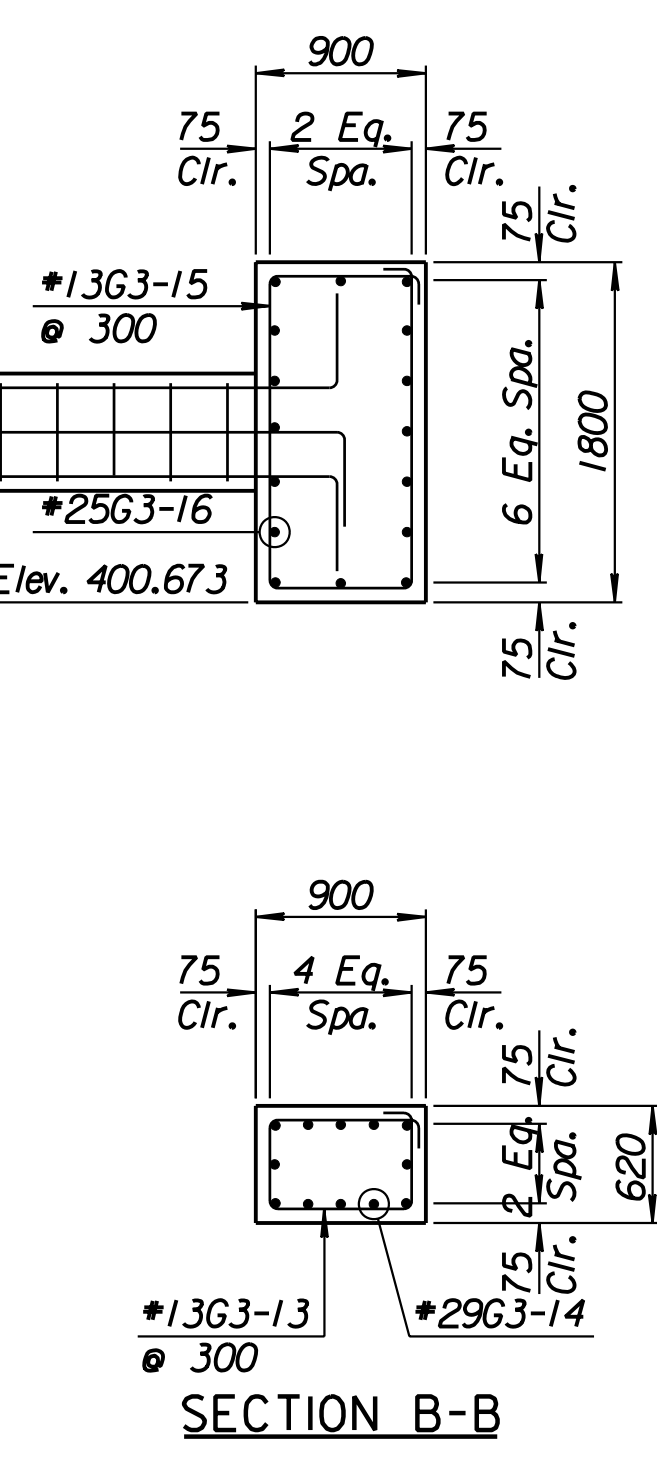
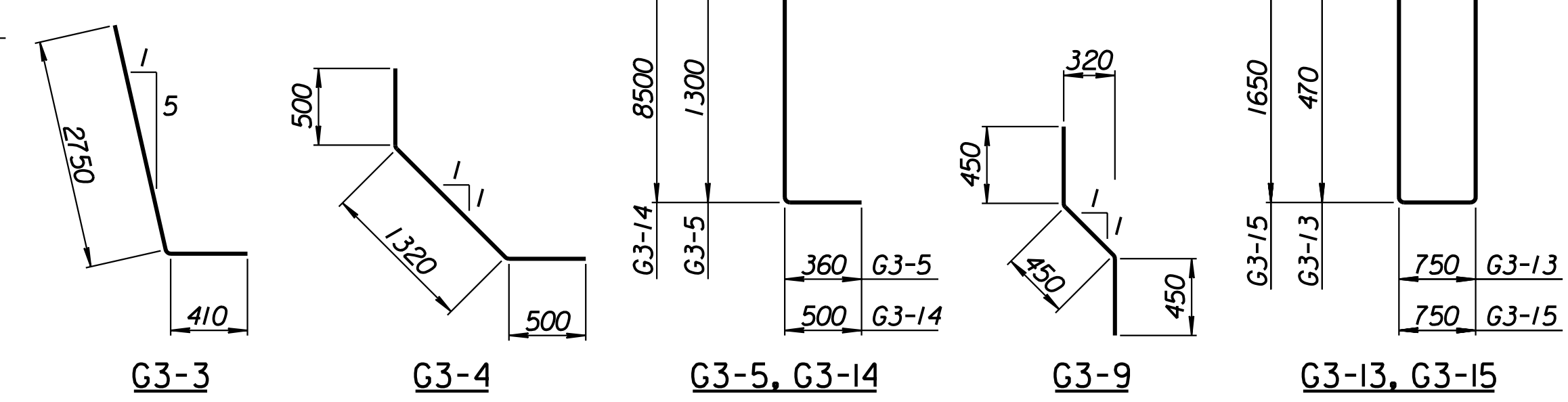
REINFORCING STEEL							
Straight Bars				Bent Bars			
Mark	Size	Number	Length	Mark	Size	Number	Length
G3-1	*25	164	3320	G3-3	*25	130	3160
G3-2	*25	44	10 670	G3-4	*22	66	2320
				G3-5	*22	130	1660
G3-6	*22	130	3920				
G3-7	*13	66	3420	G3-9	*16	66	1350
G3-8	*16	78	9650				
G3-10	*19	66	2950				
G3-11	*13	66	3050				
G3-12	*29	36	4000				

WALL QUANTITIES		
Item	Quantity	Unit
Pressure Grouted Pile (406 mm)	360.0	m
Concrete (Grade 30)(AE)	119.4	m <sup>3</sup>
Reinforcing Steel (Grade 420)	11 228	kg
Class III Excavation	89.3	m <sup>3</sup>



TIE BACK REINFORCING STEEL							
Straight Bars			Bent Bars				
Mark	Size	Number	Length	Mark	Size	Number	Length
G3-16	*25	32	10 170	G3-13	*13	81	2740
				G3-14	*29	36	9000
				G3-15	*13	63	5100

TIE BACK QUANTITIES		
Item	Quantity	Unit
Concrete (Grade 30)(AE)	43.4	m <sup>3</sup>
Reinforcing Steel (Grade 420)	3472	kg



1			
No.	Revisions	By	Date
CITY OF WICHITA			
<b>MAIZE SOUTHEAST WALL</b>			
STA. 15+840.484 TO STA. 15+859.887			
SEDGWICK COUNTY			
<b>Professional Engineering Consultants, P.A.</b> 303 S. TOPEKA • WICHITA, KANSAS 67202 316-262-2691 • FAX 316-262-3003			
Designed by	P.D.F.	Checked by	R.A.S.
Drawn by	W.L.L.	Date	Apr. 2002
		Job No.	97362

Drawn by: wil  
 Plotted by: drp  
 3-25-2002  
 I:/1997/97362/As-Built/dgn/s/Vol 2/Sh 298-Maize-SEWall-T.dgn Last Rev: 8-22-07 By: gdr