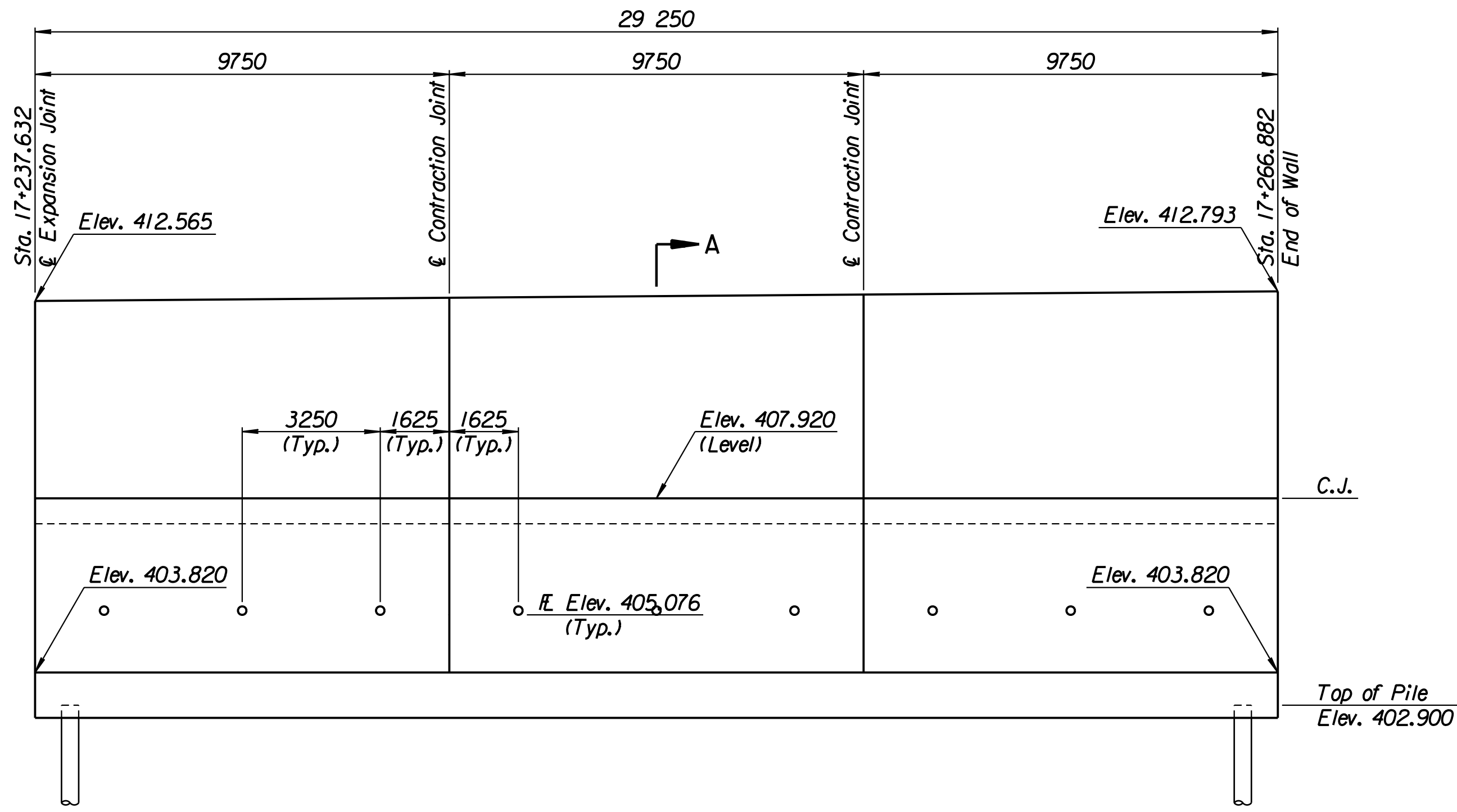


STATE	PROJECT NO.	YEAR	SHEET NO.	TOTAL SHEETS
KANSAS	54-87 K-6657-01	2002	316	1122

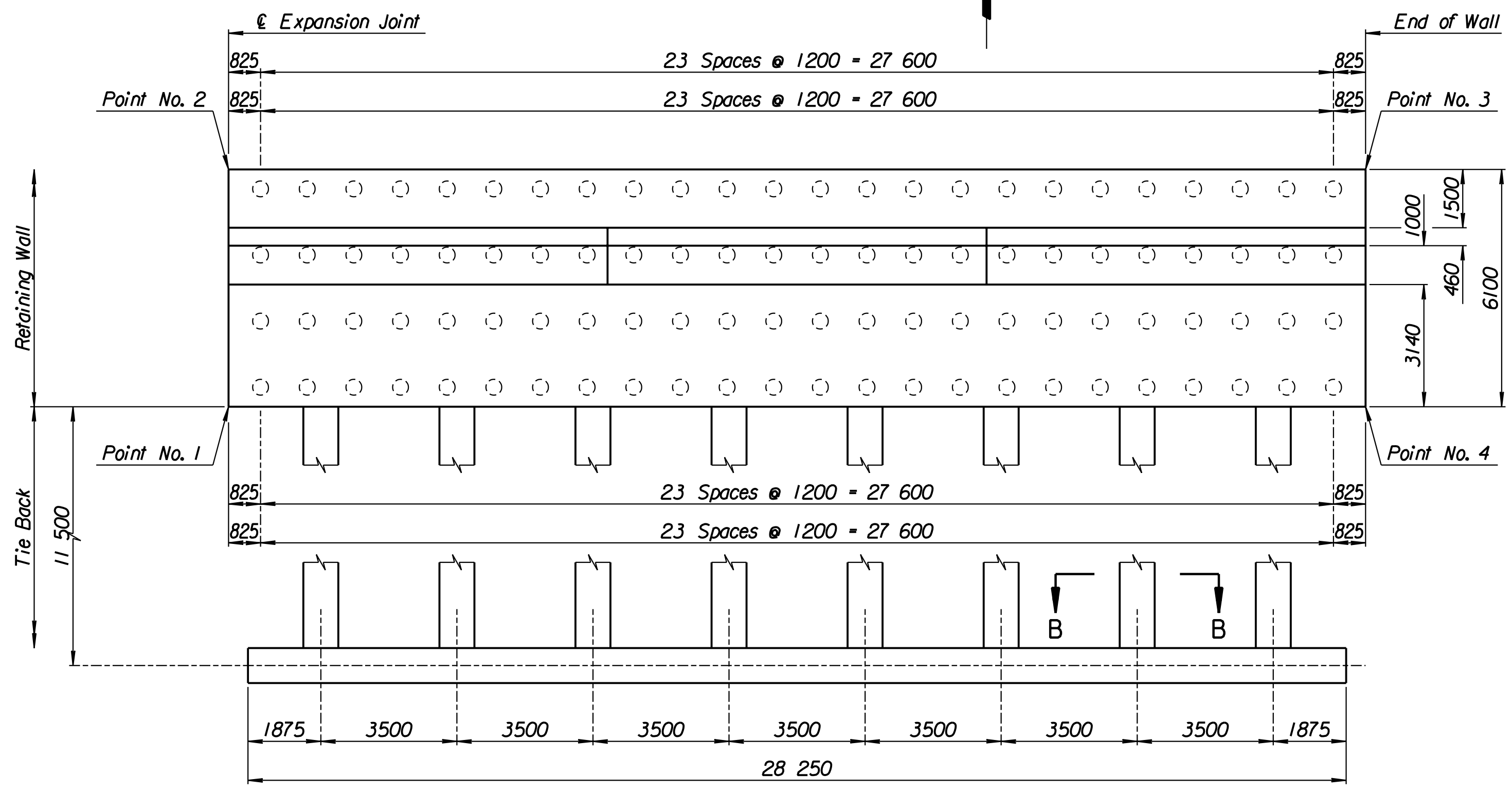
LAYOUT INFORMATION				
Point No.	North Coordinate	East Coordinate	Station	Offset
1	511977.416	493120.251	17+237.632	13.895 Lt.
2	511982.948	493117.682	17+237.632	19.995 Lt.
3	511995.270	493144.210	17+266.882	19.995 Lt.
4	511989.738	493146.779	17+266.882	13.895 Lt.

REINFORCING STEEL							
Straight Bars			Bent Bars				
Mark	Size	Number	Length	Mark	Size	Number	Length
A5-1	*29	312	6020	A5-3	*29	195	5180
A5-2	*25	80	15 540	A5-4	*22	195	3200
A5-6	*32	195	6680	A5-5	*32	294	3060
A5-7	*13	99	4940	A5-9	*19	99	1350
A5-8	*16	198	9650				
A5-10	*19	99	4490				
A5-11	*13	99	4590				
A5-12	*29	96	4000				

WALL QUANTITIES		
Item	Quantity	Unit
Pressure Grouted Pile (406 mm)	1152.0	m
Concrete (Grade 30)(AE)	387.8	m ³
Reinforcing Steel (Grade 420)	42 694	kg
Class III Excavation	348.1	m ³

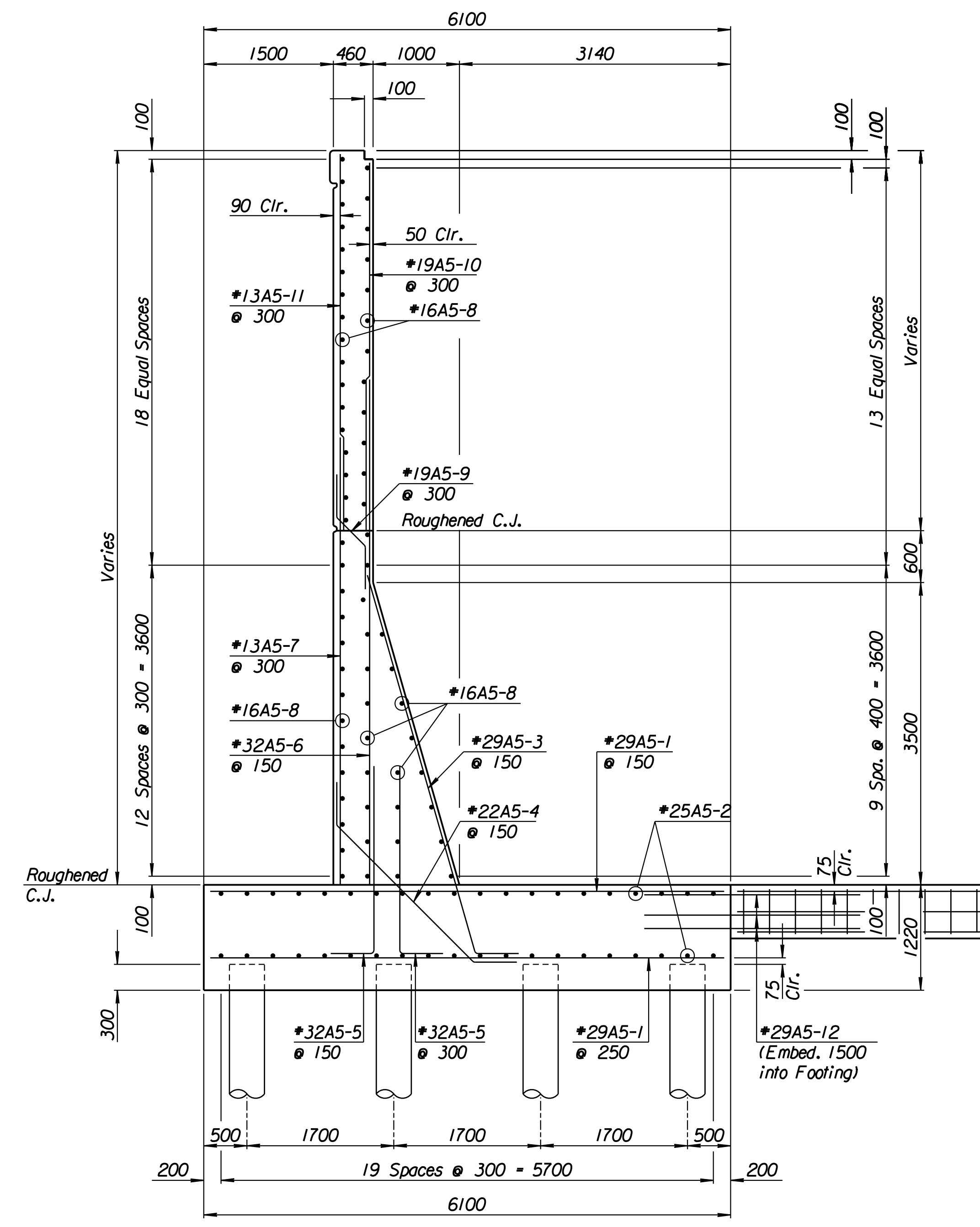


ELEVATION

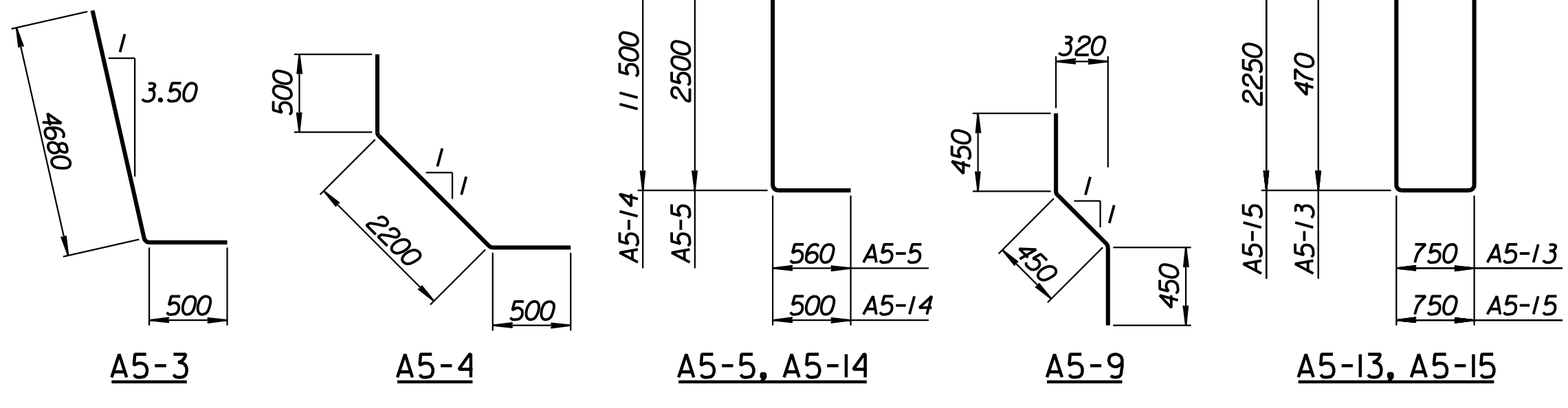


TIE BACK REINFORCING STEEL							
Straight Bars			Bent Bars				
Mark	Size	Number	Length	Mark	Size	Number	Length
A5-16	*25	40	15 040	A5-13	*13	296	2740
				A5-14	*29	96	12 000
				A5-15	*13	94	6300

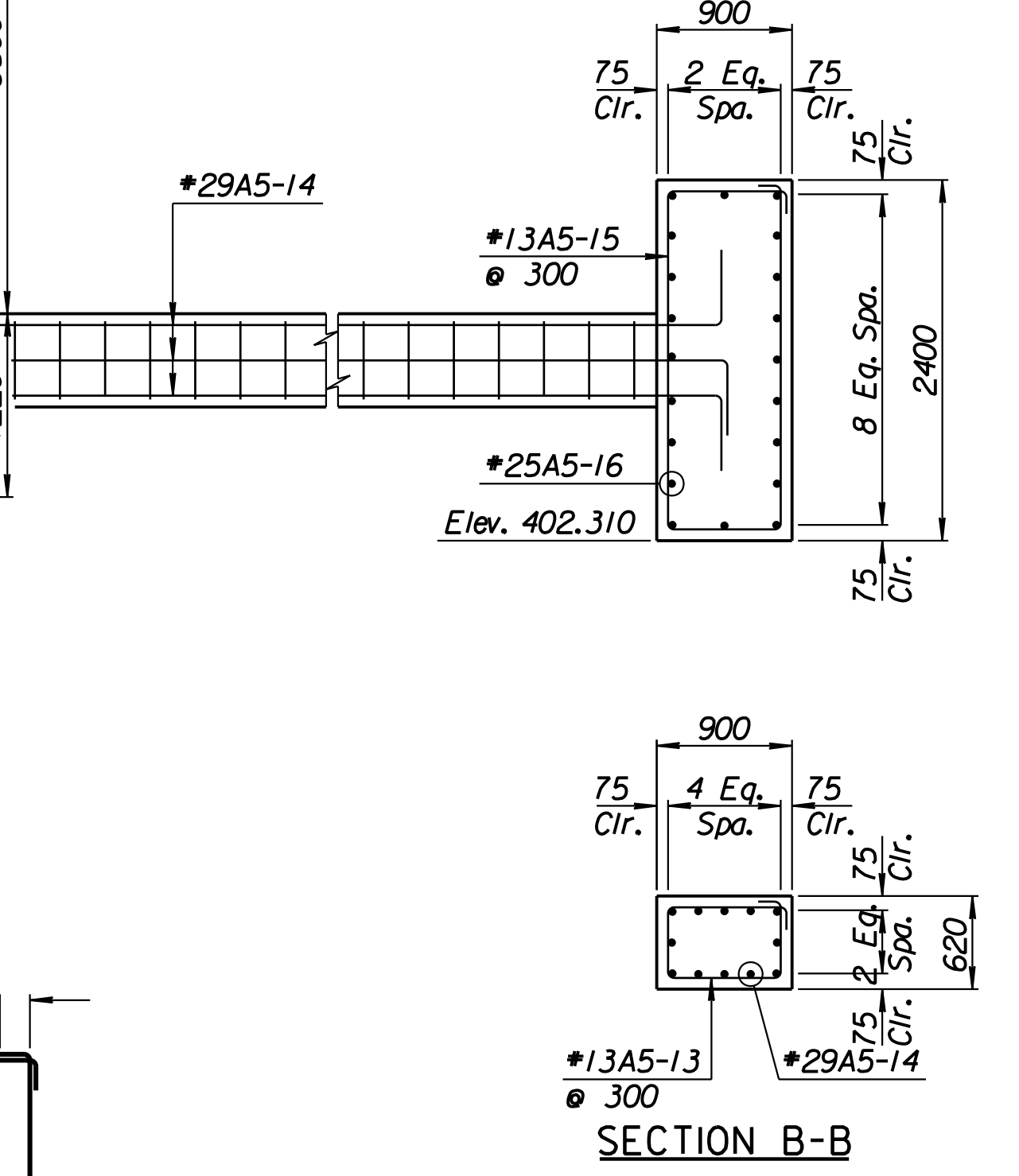
TIE BACK QUANTITIES		
Item	Quantity	Unit
Concrete (Grade 30)(AE)	110.3	m ³
Reinforcing Steel (Grade 420)	9614	kg



SECTION A-A



BENDING DIAGRAMS
All dimensions are out to out of bars.



SECTION B-B

1			
No.	Revisions	By	Date
CITY OF WICHITA			
TYLER NORTHWEST WALL			
STA. 17+237.632 TO STA. 17+266.882			
SEDGWICK COUNTY			
Professional Engineering Consultants, P.A. 303 S. TOPEKA • WICHITA, KANSAS 67202 316-262-2691 • FAX 316-262-3003			
Designed by	P.D.F.	Checked by	R.A.S.
Drawn by	W.L.L.	Date	April 11, 2002
		Job No.	97362

Drawn by: wil
 Plotted by: drp
 4-11-2002
 I:/1997/97362/As-Built/dgn/s/Vol 2/Sh 316-Tyler-NWwall-1.dgn Last Rev: 8-23-07 By: gdr