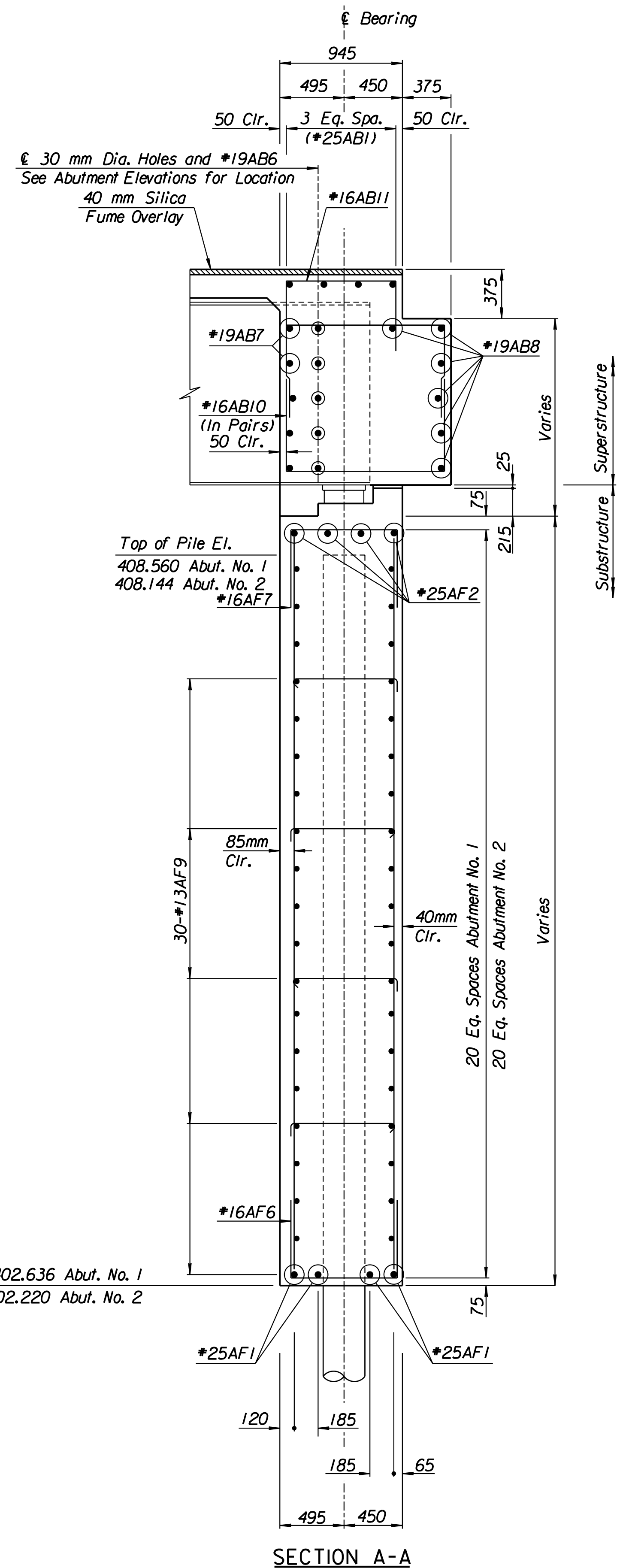
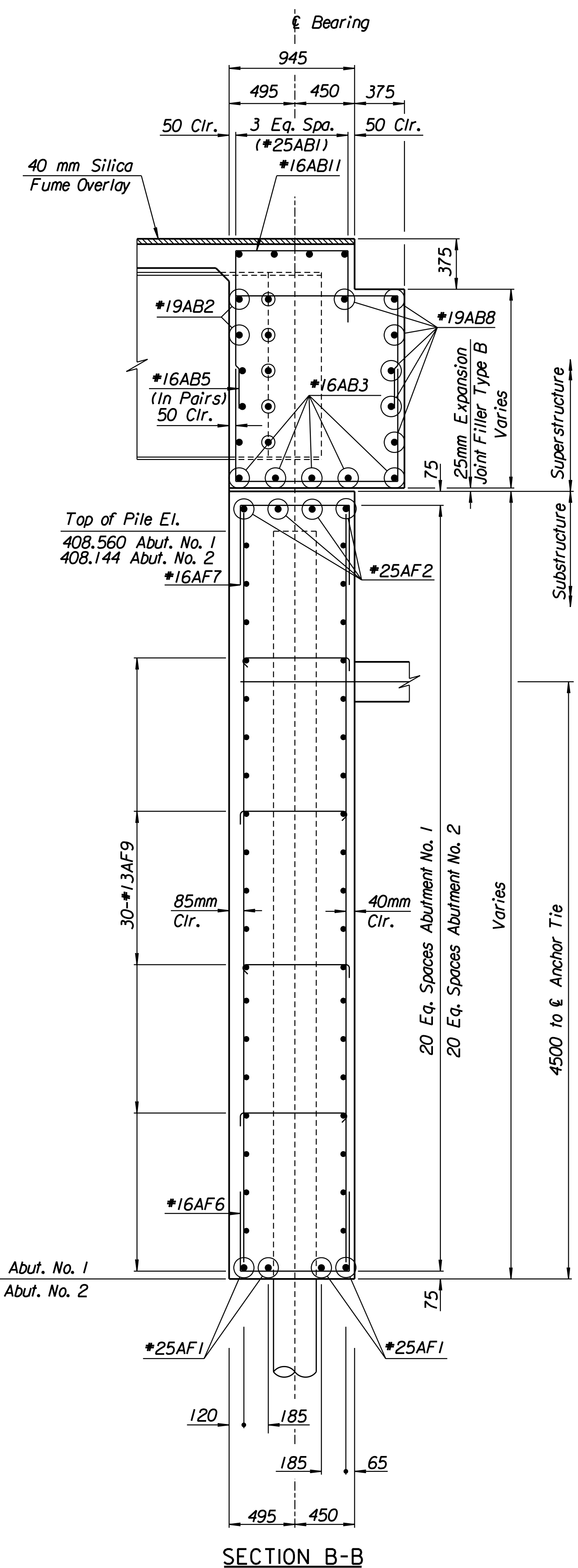


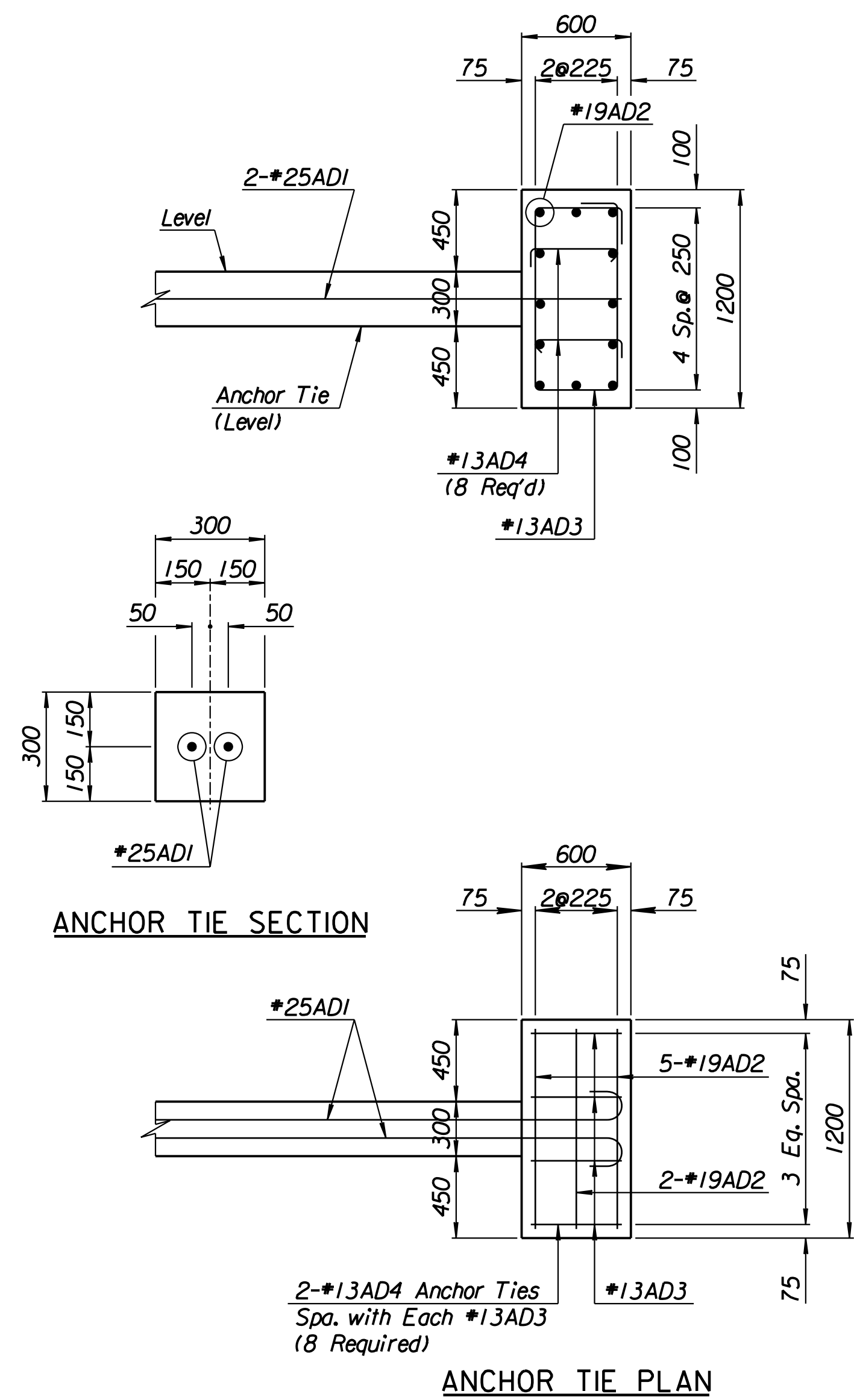
STATE	PROJECT NO.	YEAR	SHEET NO.	TOTAL SHEETS
KANSAS	54-87 K-6657-01	2002	444	1122



SECTION A-A



SECTION B-B



RECORD DRAWING

Drawn By: ros  
 I:/1997/97362/As-Builts/dgn's/Vol\_3/Sh 444-ABMTWB.dgn Last Rev: 8-30-07 By: gdr

No.	Revisions	By	Date
CITY OF WICHITA			
BR. NO. 54-87-19.05(489) W.B.		STA. 15+612.397	
<b>KELLOGG OVER MAIZE ROAD ABUTMENT SECTIONS</b>			
SEDGWICK COUNTY			
<b>Professional Engineering Consultants, P.A.</b> 303 S. TOPEKA • WICHITA, KANSAS 67202 316-262-2691 • FAX 316-262-3003			
Designed by	RAS	Checked by	RAS
Drawn by	RAS	Date	April, 2002
		Job No.	97362