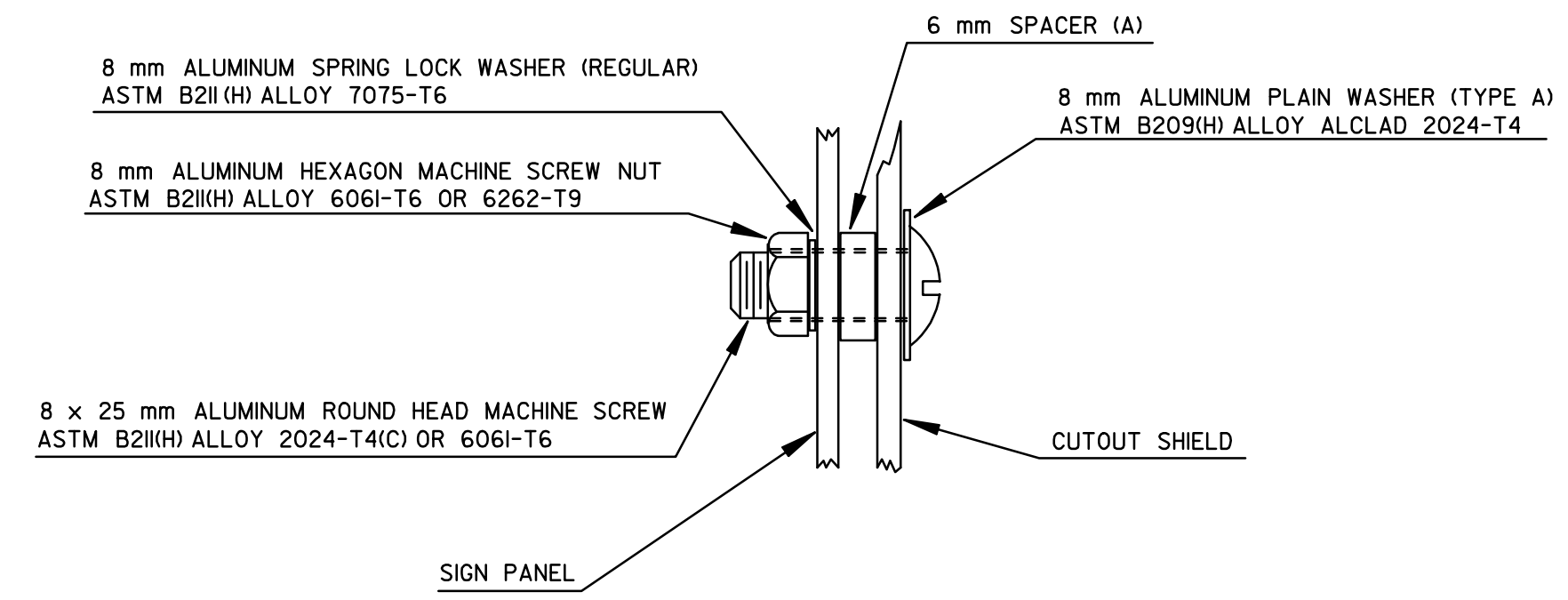
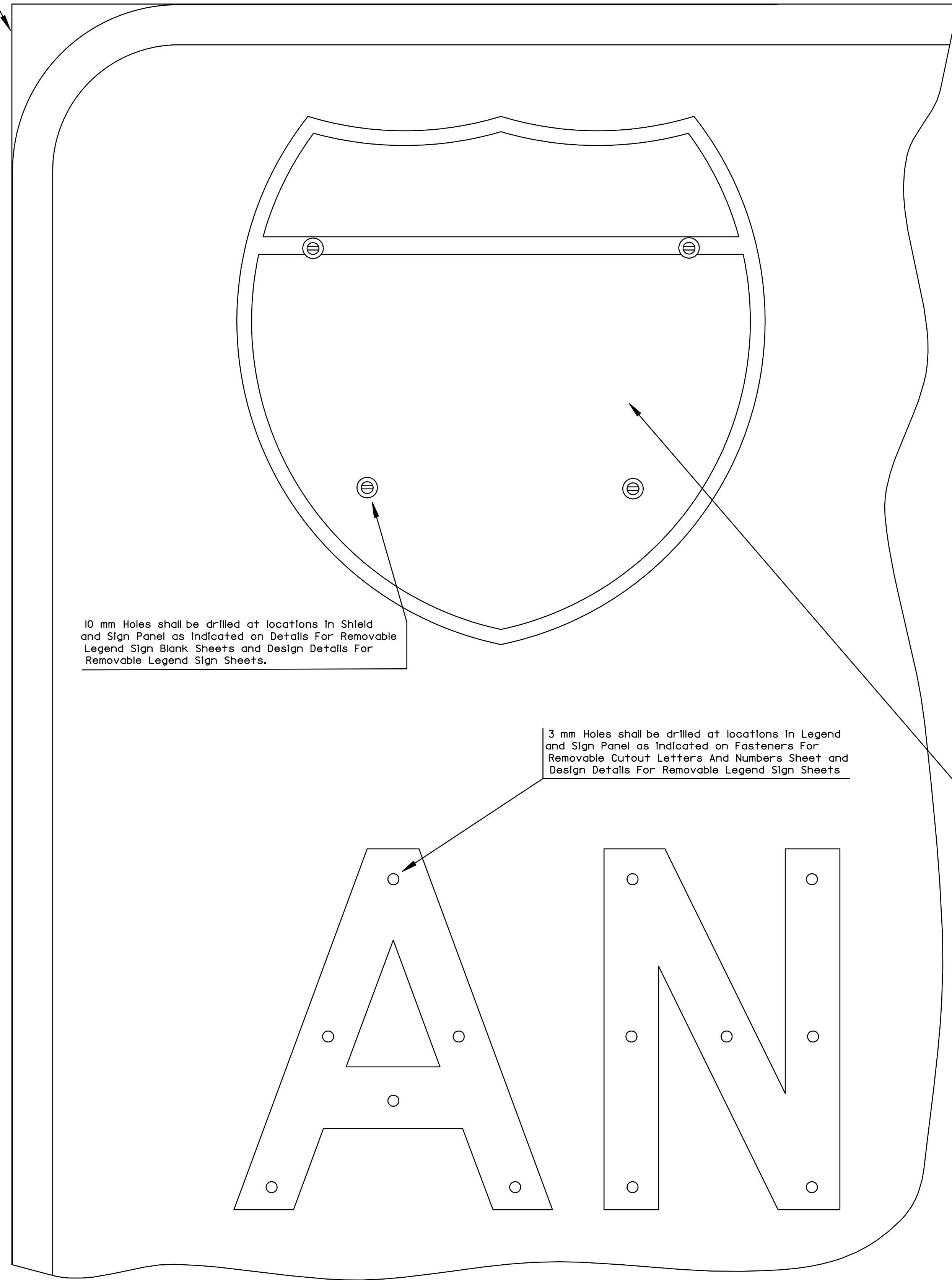
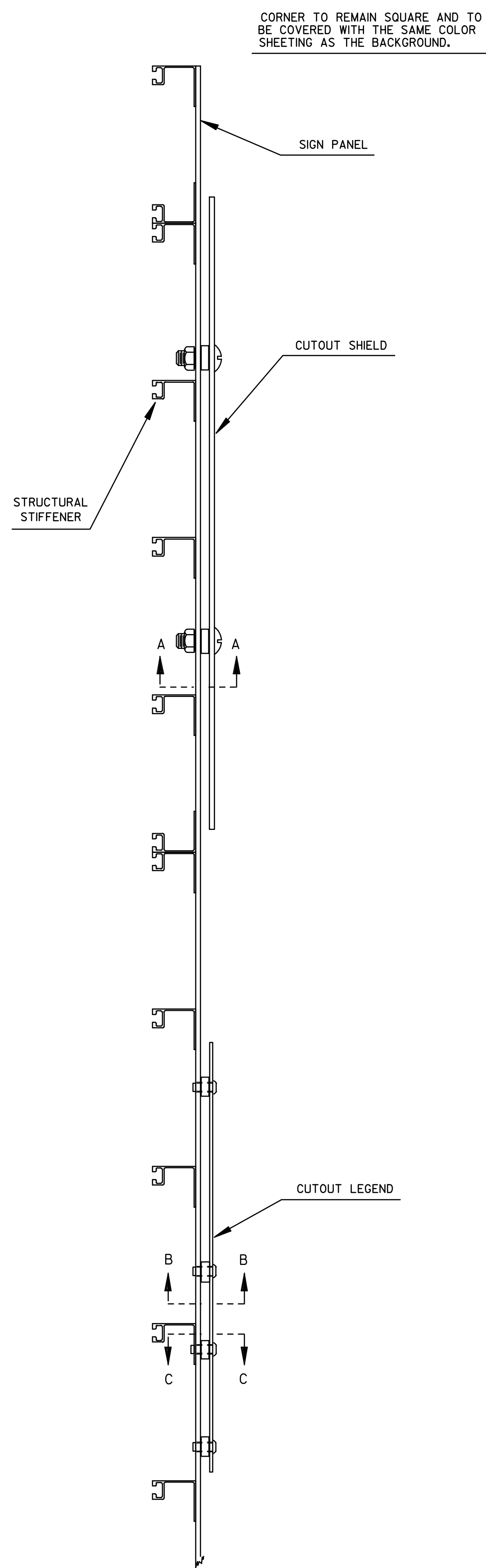
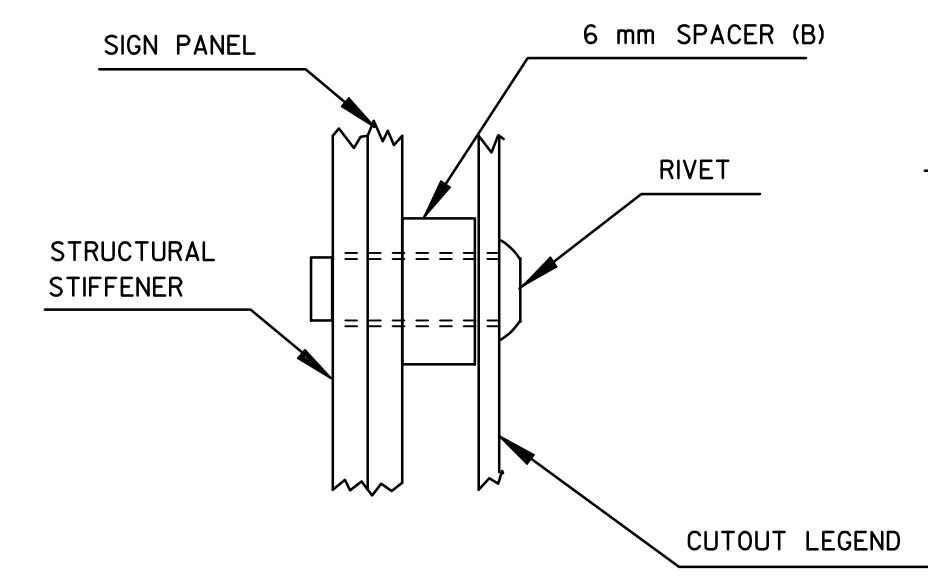


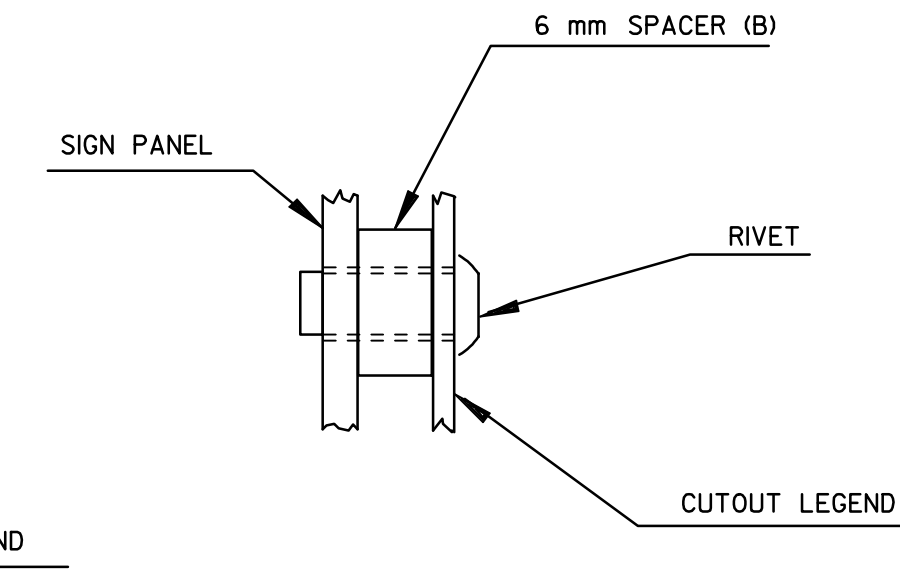
FHWA REGION NO.	STATE	PROJECT NO.	YEAR	SHEET NO.	TOTAL SHEETS
7	KANSAS	54-87 K-6657-01	2002	743	1122



SECTION A-A

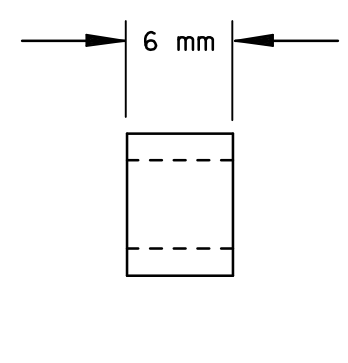
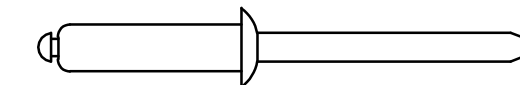
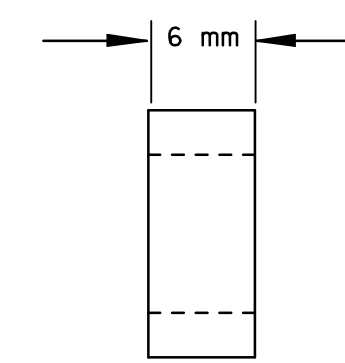


SECTION C-C



SECTION B-B

NOTE: TYPICAL MOUNTING FOR INTERSTATE, U.S. & K-SHIELDS



NOTES:

All legend shall be as specified on the Detailed Sign Specification Sheet.

The rivet shall be an Aluminum Domed Head, Front Entry, Expanding Rivet, 3 mm in diameter and shall be the length recommended by the manufacturer for the combined thickness of the Cutout Legend material, the spacer, the Sign Panel, and the Structural Stiffener where required.

The rivets shall be Townsend, Huck, Olympic, Cherry, or others approved by the Engineer.

The Spring Lock Washer shall comply with ANSI B27.1-1965, while the Plain Washer shall comply with ANSI B27.2-1965.

3					
2					
1					
NO.	DATE	REVISION	BY	APP'D	

KANSAS DEPARTMENT OF TRANSPORTATION

MOUNTING DETAILS FOR REMOVABLE LEGEND

TE688SI 9-1-94

DESIGNED	KH	QUANTITIES	KH	TRACED	
DESIGN CK.	DETAIL CK.	QUAN. CK.	TRACE CK.		

RECORD DRAWING

DSNR: OPER: SVB SCALE: 1
 I:/1997/97362/As-Builts/dgn/4/5h 743-KDOT _STD-TE688SI.dgn Last Rev: 10-3-07 Bjs gdr