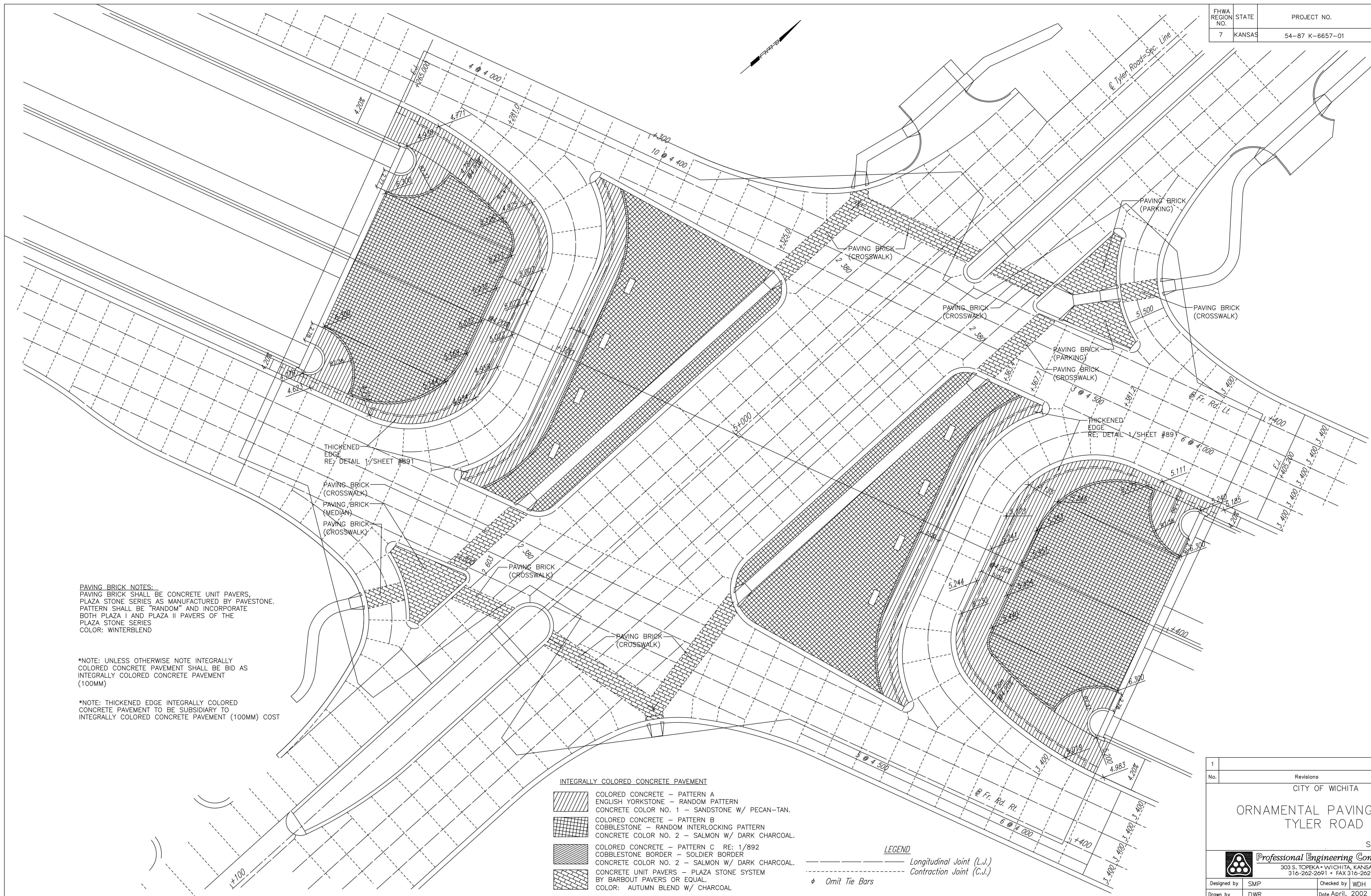


FHWA REGION NO.	STATE	PROJECT NO.	YEAR	SHEET NO.	TOTAL SHEETS
7	KANSAS	54-87 K-6657-01	2002	892	1122

DATE	
BY	
REFERENCES NOTED	
REFERENCES CHECKED	





DSNR: WDH OPER: JGP SCALE: 1:250
 I:/1997/97362/INTERSECTIONS/TYLER_mv.p.dgn 12-19-2000 10:32:19 LAST REV: 11-29-01 BY: JGP

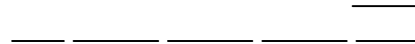
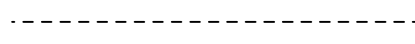
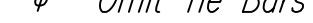


PAVING BRICK NOTES:
 PAVING BRICK SHALL BE CONCRETE UNIT PAVERS.
 PLAZA STONE SERIES AS MANUFACTURED BY PAVESTONE.
 PATTERN SHALL BE "RANDOM" AND INCORPORATE
 BOTH PLAZA I AND PLAZA II PAVERS OF THE
 PLAZA STONE SERIES
 COLOR: WINTERBLEND


*NOTE: UNLESS OTHERWISE NOTE INTEGRALLY
 COLORED CONCRETE PAVEMENT SHALL BE BID AS
 INTEGRALLY COLORED CONCRETE PAVEMENT
 (100MM)

*NOTE: THICKENED EDGE INTEGRALLY COLORED
 CONCRETE PAVEMENT TO BE SUBSIDIARY TO
 INTEGRALLY COLORED CONCRETE PAVEMENT (100MM) COST

- INTEGRALLY COLORED CONCRETE PAVEMENT**
-  COLORED CONCRETE - PATTERN A
 ENGLISH YORKSTONE - RANDOM PATTERN
 CONCRETE COLOR NO. 1 - SANDSTONE W/ PECAN-TAN.
 -  COLORED CONCRETE - PATTERN B
 COBBLESTONE - RANDOM INTERLOCKING PATTERN
 CONCRETE COLOR NO. 2 - SALMON W/ DARK CHARCOAL.
 -  COLORED CONCRETE - PATTERN C RE: 1/892
 COBBLESTONE BORDER - SOLDIER BORDER
 CONCRETE COLOR NO. 2 - SALMON W/ DARK CHARCOAL.
 -  CONCRETE UNIT PAVERS - PLAZA STONE SYSTEM
 BY BARBOUT PAVERS OR EQUAL.
 COLOR: AUTUMN BLEND W/ CHARCOAL

- LEGEND**
-  Longitudinal Joint (L.J.)
 -  Contraction Joint (C.J.)
 -  Omit Tie Bars

AS-BUILT DRAWINGS
 THESE DOCUMENTS
 INCLUDE RECORD
 INFORMATION PROVIDED
 BY THE CONTRACTOR.
 THIS INFORMATION HAS
 NOT BEEN VERIFIED IN ITS
 ENTIRETY BY THE DESIGN
 PROFESSIONAL DATE: SEPTEMBER 2006

1			
No.	Revisions	By	Date
CITY OF WICHITA			
ORNAMENTAL PAVING PLAN TYLER ROAD			
SEDGWICK COUNTY			
 Professional Engineering Consultants, P.A.			
303 S. TOPEKA • WICHITA, KANSAS 67202 316-262-2691 • FAX 316-262-3003			
Designed by	SMP	Checked by	WDH
Drawn by	DWR	Date	April, 2002
		Job No.	97362