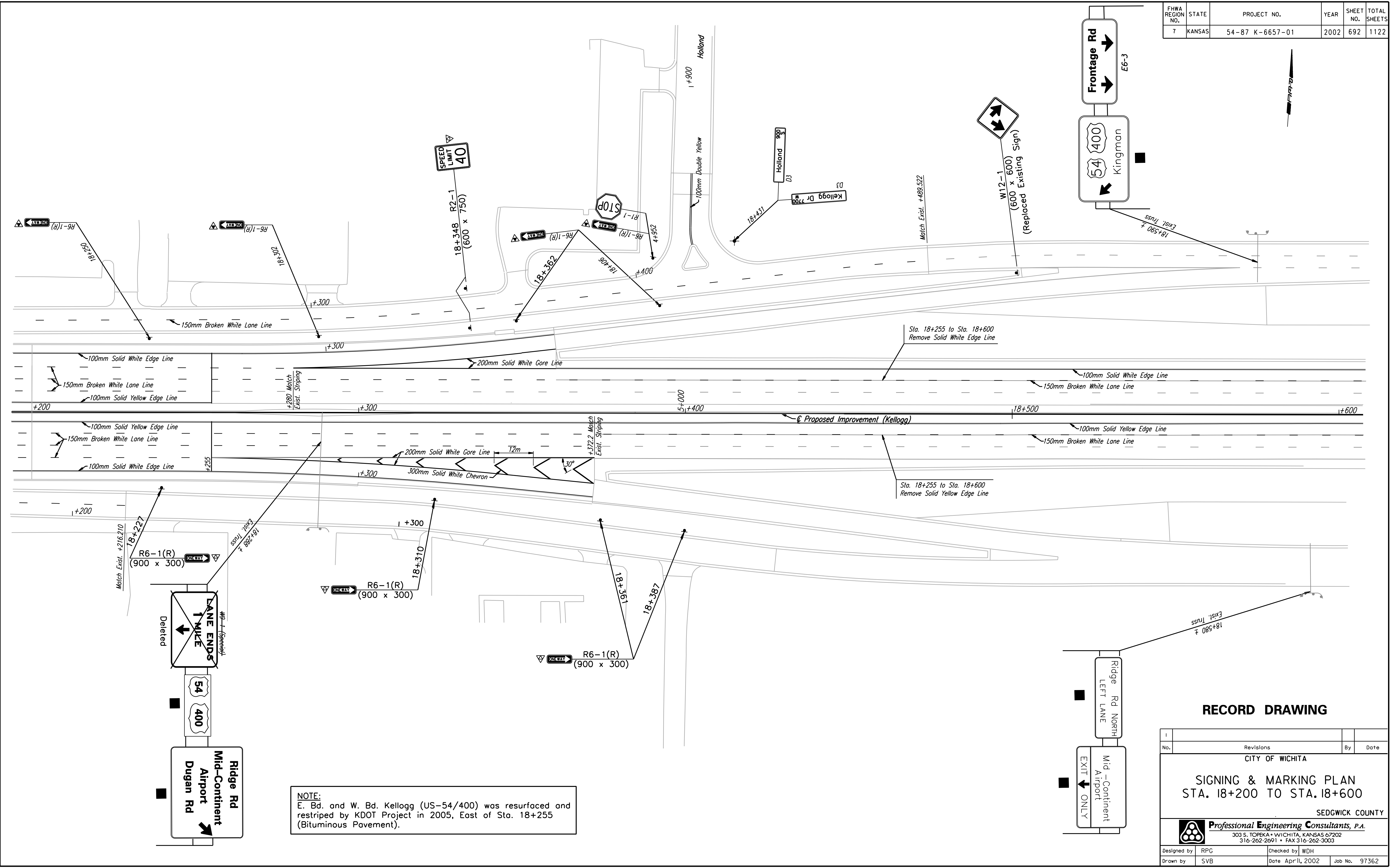


FHWA REGION NO.	STATE	PROJECT NO.	YEAR	SHEET NO.	TOTAL SHEETS
7	KANSAS	54-87 K-6657-01	2002	692	1122

DATE	
BY	
REFERENCES NOTED	
REFERENCES CHECKED	



NOTE:
 E. Bd. and W. Bd. Kellogg (US-54/400) was resurfaced and restriped by KDOT Project in 2005, East of Sta. 18+255 (Bituminous Pavement).

RECORD DRAWING

No.	Revisions	By	Date
CITY OF WICHITA			
SIGNING & MARKING PLAN STA. 18+200 TO STA. 18+600			
SEDGWICK COUNTY			
Professional Engineering Consultants, P.A.			
303 S. TOPEKA • WICHITA, KANSAS 67202 316-262-2691 • FAX 316-262-3003			
Designed by	RPG	Checked by	WDH
Drawn by	SVB	Date	April, 2002
		Job No.	97362

DSWR: WDH OPER: JGP SCALE: 1:500
 1/1997/97362/As-Built/sgn/101_4/SH 692-pl/182.dgn Last Rev: 10-2-07 By: gdr