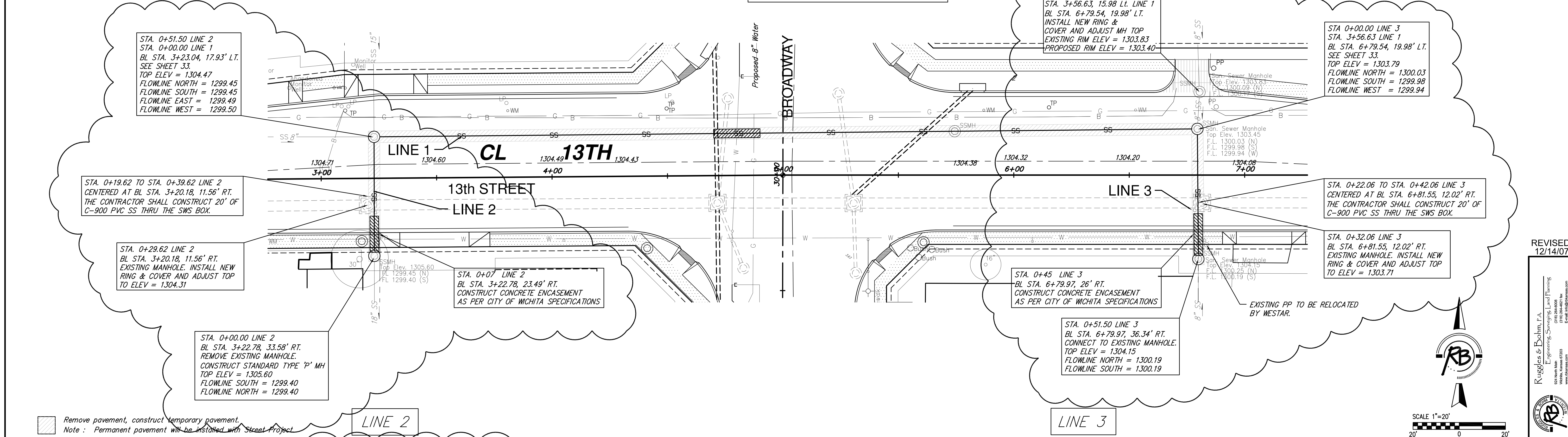
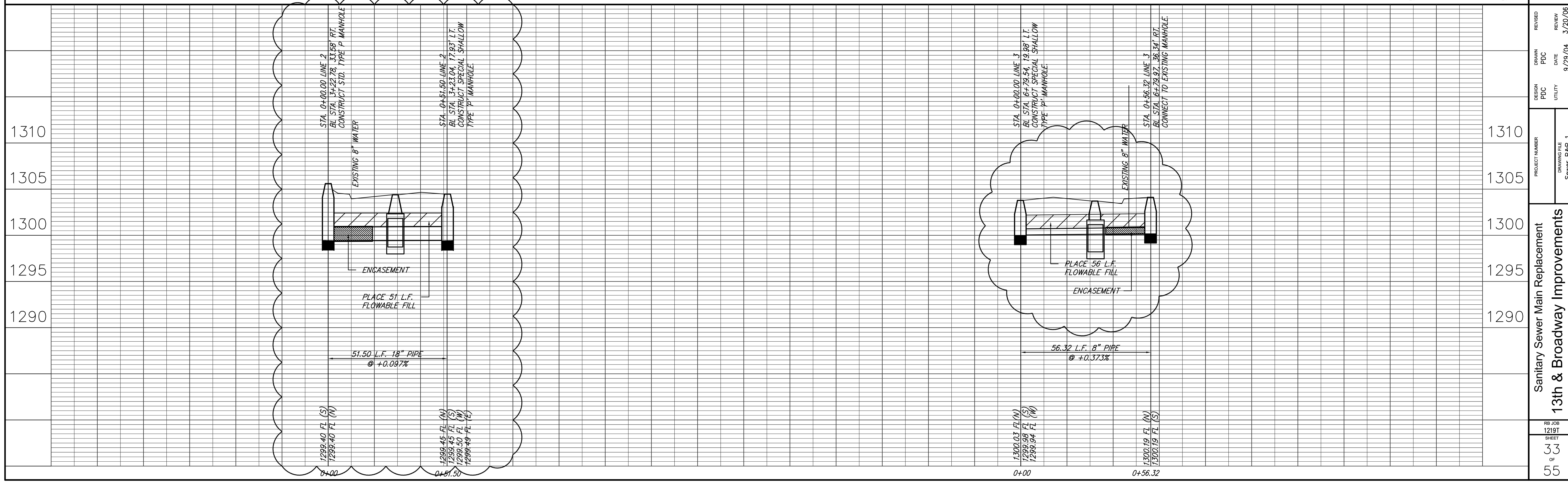


| FHWA REGION NO. | STATE | PROJECT NUMBER | FISCAL YEAR | SHEET NUMBER | TOTAL SHEETS |
|-----------------|--------|----------------|-------------|--------------|--------------|
| 7 | KANSAS | 87N-0245-01 | 2007 | 33 | 55 |

ALL UTILITY LINES EXPOSED DURING CONSTRUCTION SHALL BE SUPPORTED WHILE EXPOSED. METHOD TO BE APPROVED BY FIELD ENGINEER.

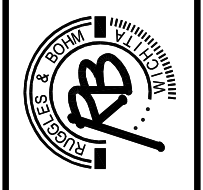


Remove pavement, construct temporary pavement.
Note: Permanent pavement will be installed with Street Project.



REVISED: 12/14/07

Kriegel & Bohm, P.A.
Engineering, Surveying, Land Planning
200 North Main
Wichita, Kansas 67203
www.kriegelbohm.com



| REVISION | DATE | REVIEW |
|----------|---------|--------|
| 3/20/06 | 9/29/04 | |

| DESIGN | DATE |
|---------|---------|
| UTILITY | 9/29/04 |

Sanitary Sewer Main Replacement
13th & Broadway Improvements
Sewer P&P 1