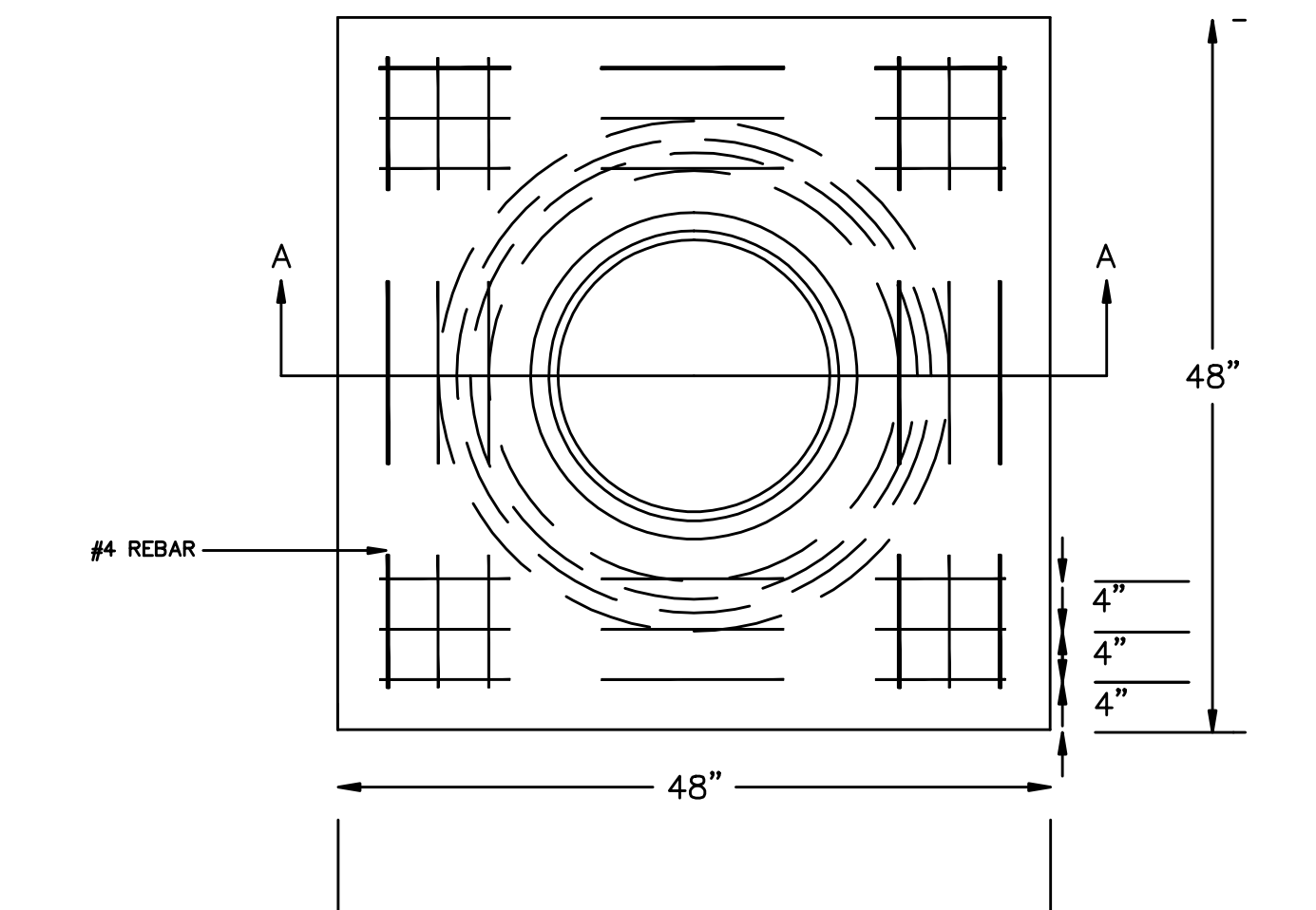
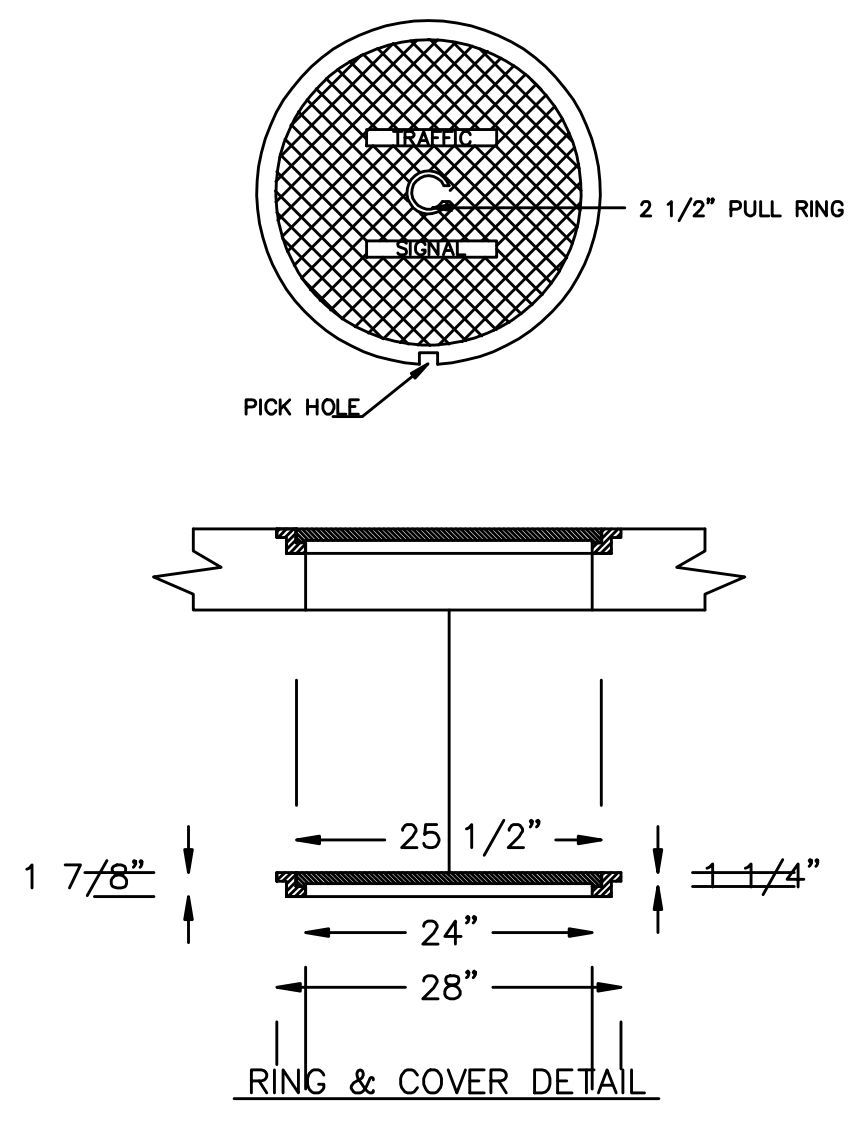
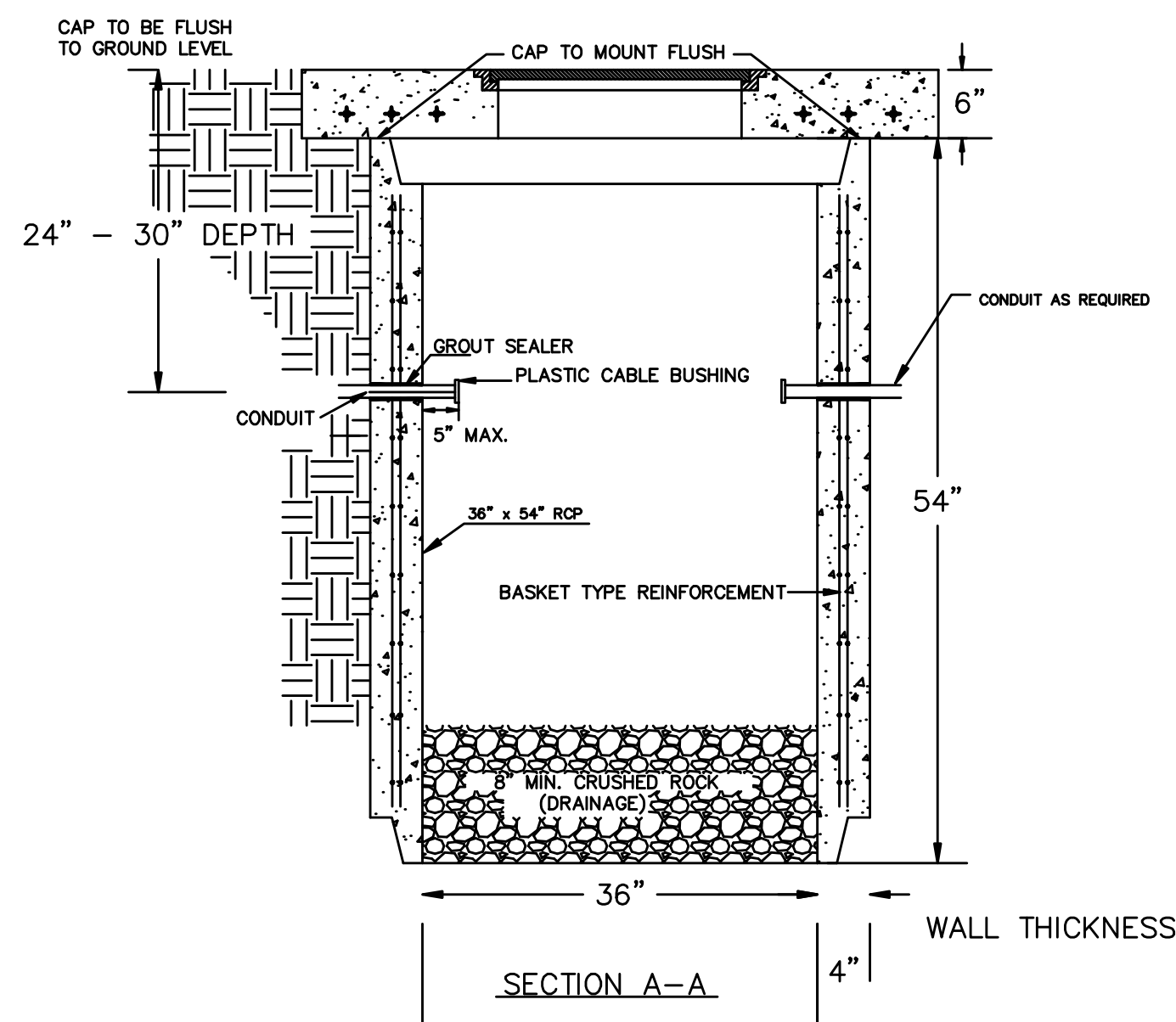


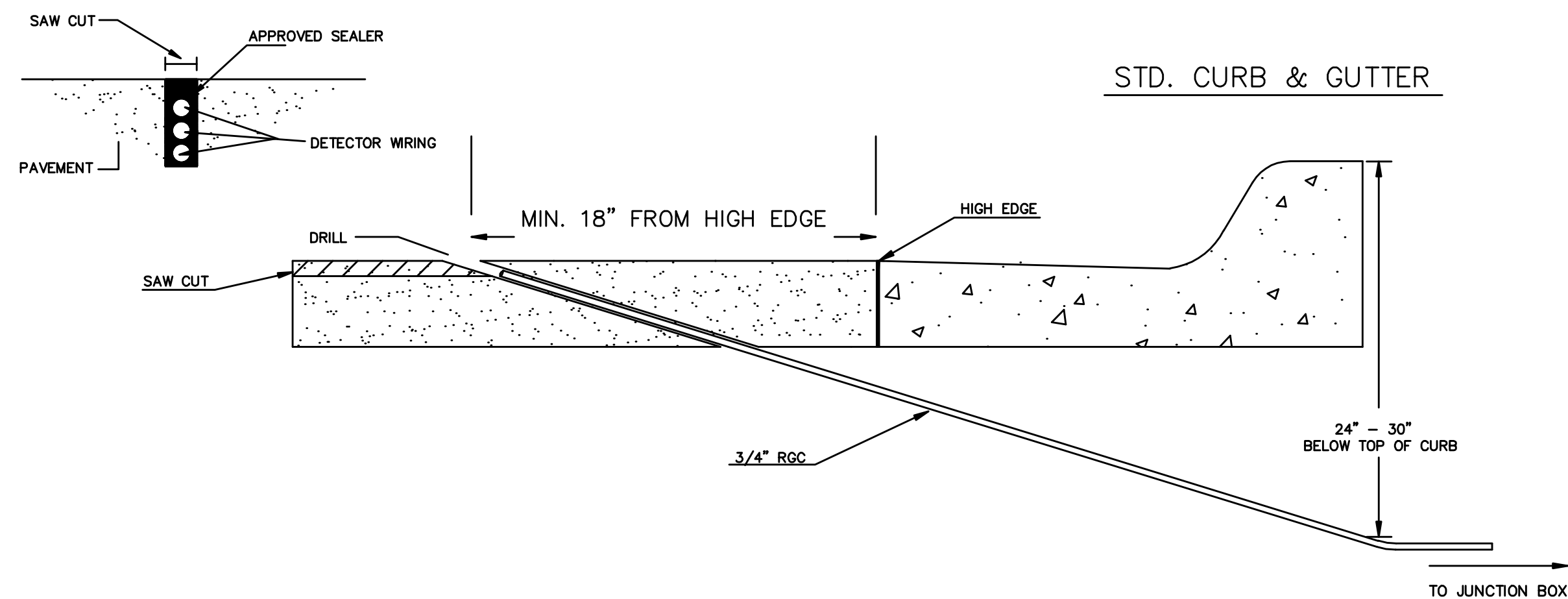
# SERVICE BOX CONSTRUCTION/INSTALLATION DETAILS



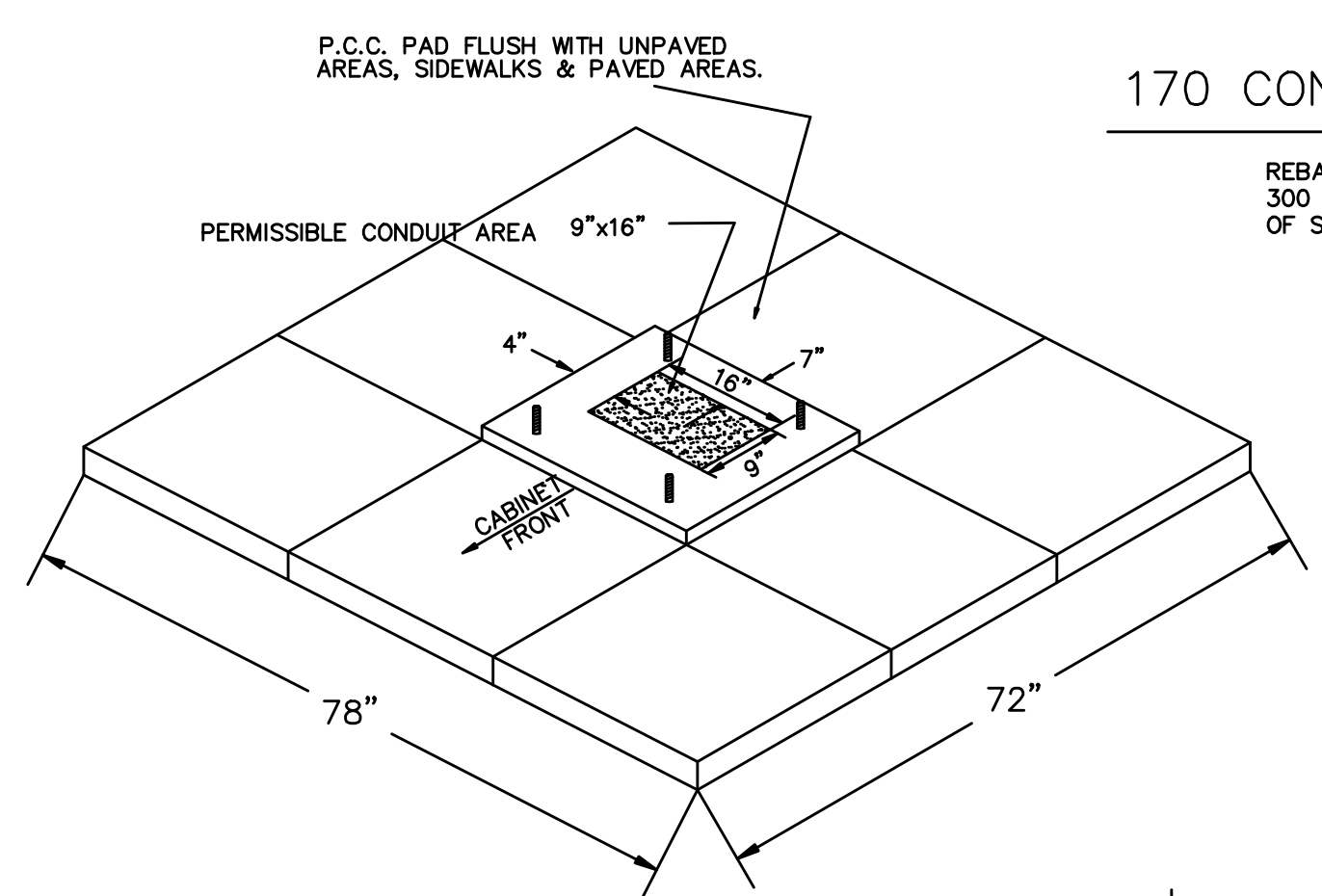
PRE-CAST CONCRETE SERVICE BOX  
(36" I.D. X 54" RCP)  
with 6" CAP



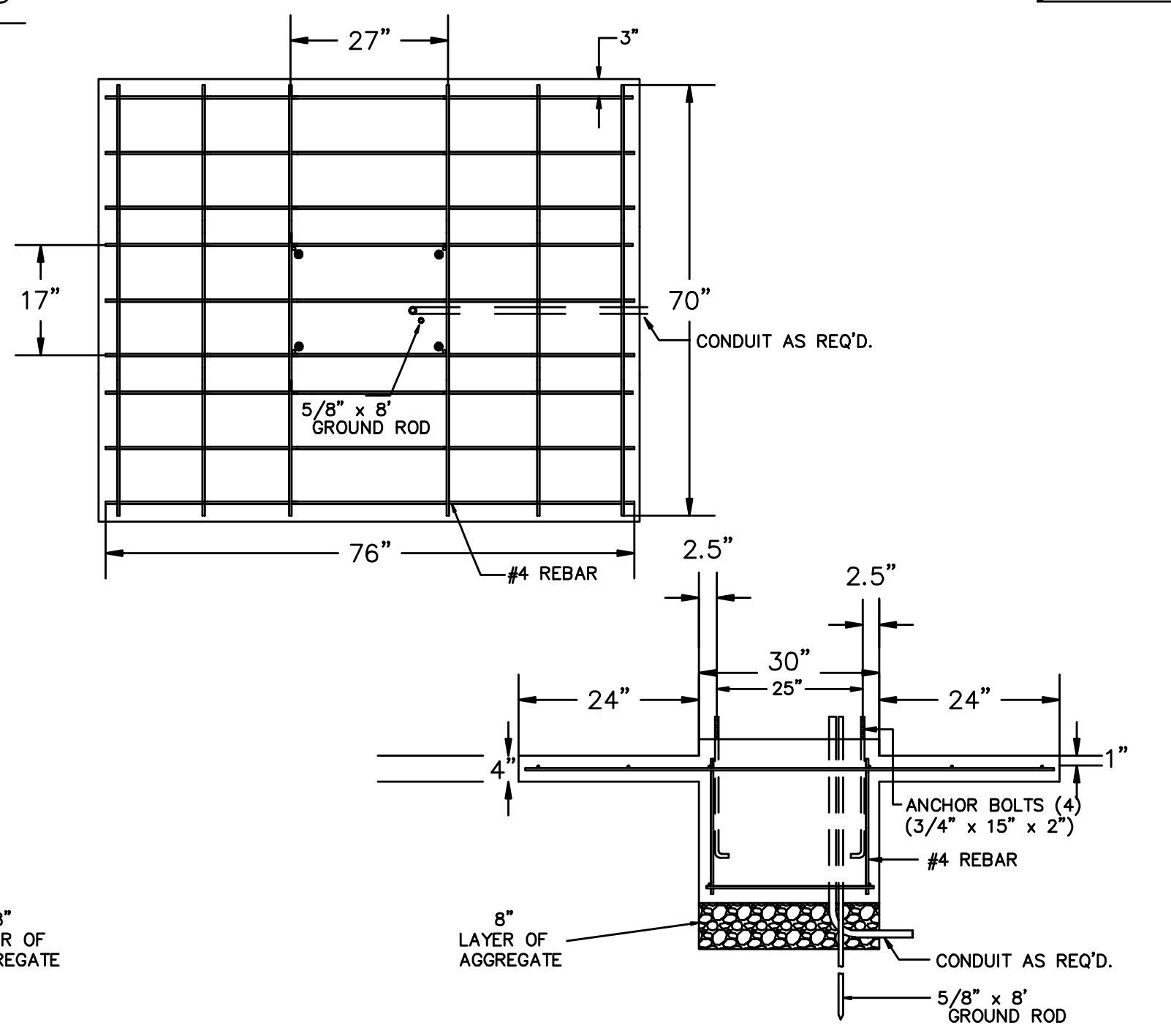
# CONDUIT/DETECTOR WIRE INSTALLATION DETAILS



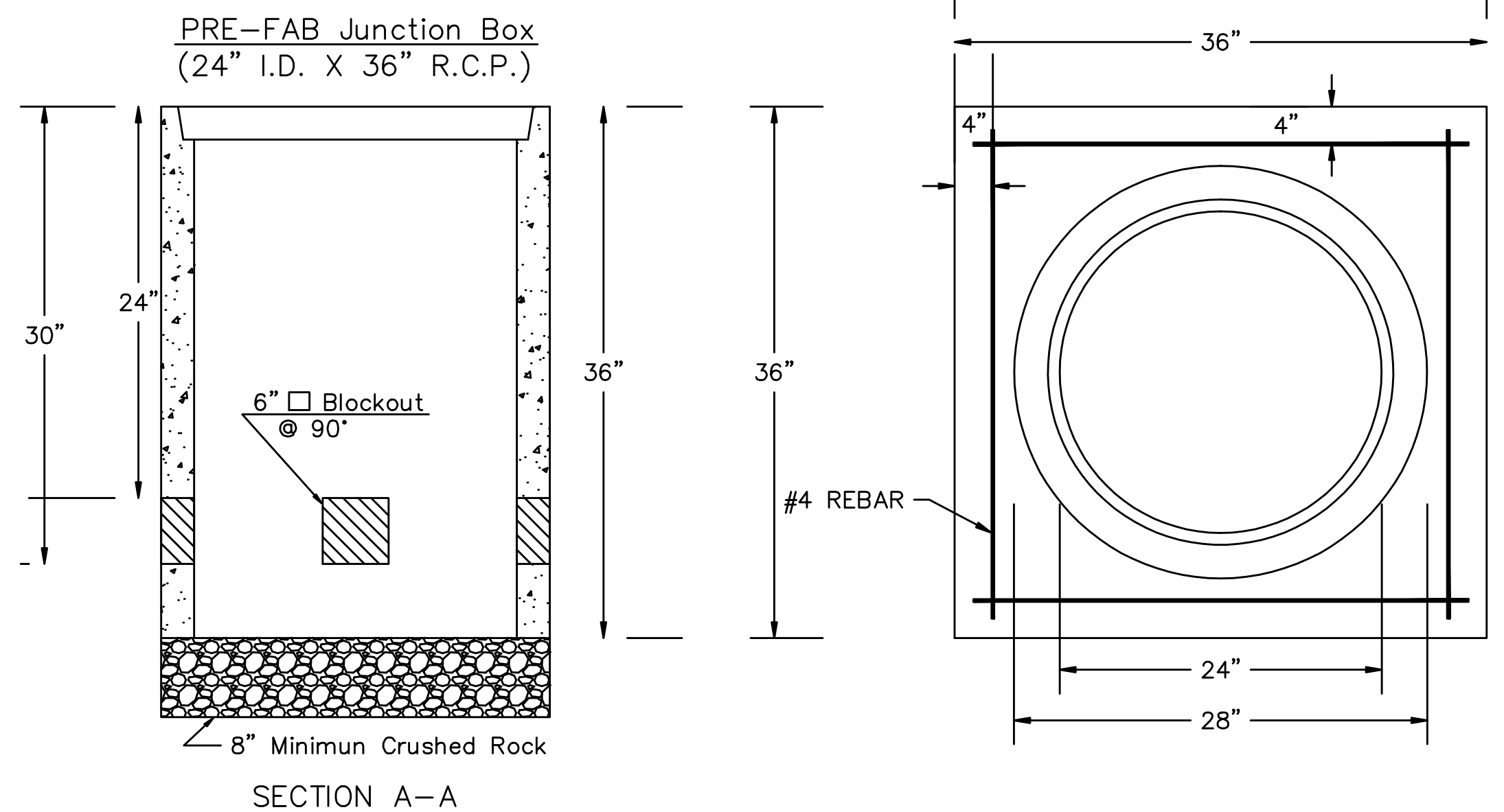
# 170 CONTROLLER PAD DETAILS



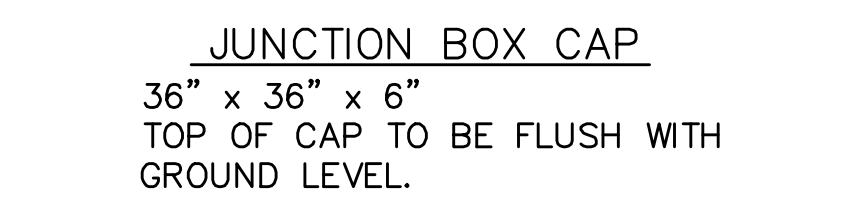
REBAR SHALL BE ASTM A615M GRADE 300 MEETING THE REQUIREMENTS OF SUBSECTION SPECIFICATIONS.



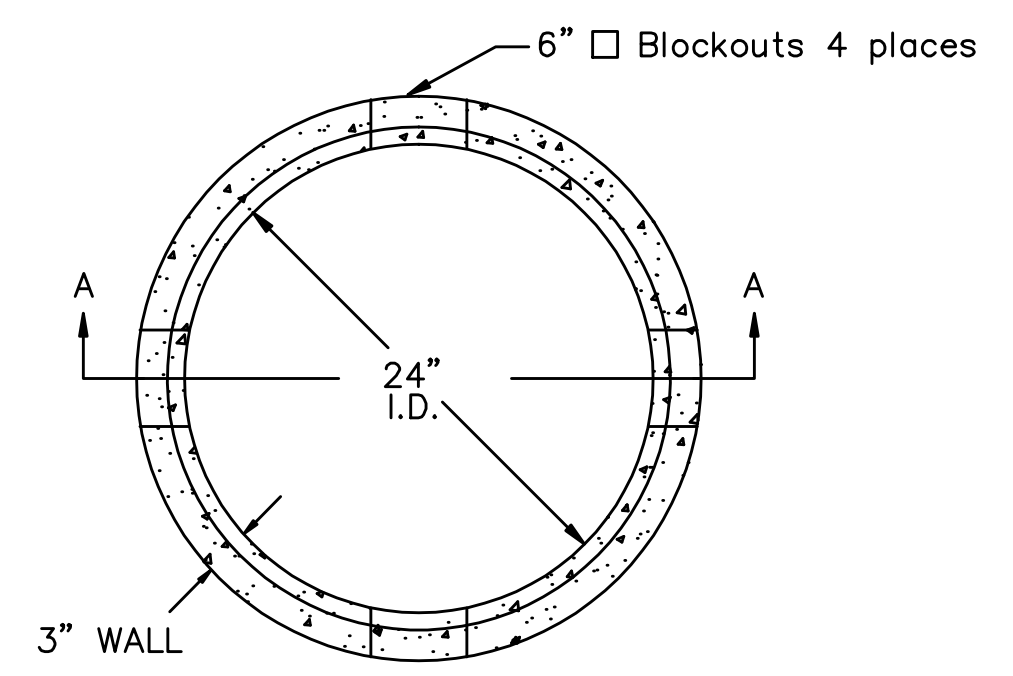
# JUNCTION BOX DETAILS



SECTION A-A



JUNCTION BOX CAP  
36" x 36" x 6"  
TOP OF CAP TO BE FLUSH WITH GROUND LEVEL.



\*SEE SERVICE BOX INSTALLATION FOR RING & COVER DETAILS.

# NOTES:

- SERVICE & JUNCTION BOX:
- CONDUIT CONNECTION TO BE FLUSH TO WITHIN 5" OF INSIDE FACE OF SIDE WALL, CONDUIT TO DRAIN INTO SERVICE BOX.
  - CONDUIT CONNECTIONS TO SERVICE BOX SHALL BE TERMINATED WITH PLASTIC CABLE BUSHING.
  - CONDUIT SHALL BE SEALED WITH APPROVED SEALER AT INSIDE WALL FACE.
  - ALL SERVICE & JUNCTION BOXES TO HAVE 8" OF CRUSHED ROCK.
- TRENCHING:
- DEPTH TO BE 30" MINIMUM WITH ROCK & STUBBLE FREE BACKFILL TO SERVE AS BEDDING MATERIAL. MAINTAIN MINIMUM CONDUIT DEPTH IN TRENCH.
  - BACKFILL TO BE COMPACTED IN 6" LOOSE LIFTS BY HAND OR MECHANICAL TAMPING TO A 95% STANDARD DENSITY.
- CONDUIT:
- SLOPE CONDUIT TO DRAIN AS DIRECTED BY THE ENGINEER.
  - 3" RIGID STEEL CONDUIT BTWN. SERVICE BOXES.  
2" " " " BTWN. SERVICE BOX AND POLE.  
1 1/4" " " " BTWN. SERVICE & JUNCTION BOXES.  
3/4" " " " BTWN. JUNCTION BOXES.  
3/4" " " " BTWN. JUNCTION BOX & DETECTOR LOOP SAW CUT

	PROJECT DESCRIPTION		
	SERVICE/JUNCTION BOX, CONTROLLER PAD CONSTRUCTION/INSTALLATION DETAILS		
	PROJECT NUMBER		
	DRAWN BY: T.M. APPROVED BY: A.S. REVISIONS: A.S.		
DATE: Apr. 96		472-84178	DATE: Jan. 2006
CITY OF WICHITA			SHEET 44 OF 55
DEPARTMENT OF PUBLIC WORKS			
TRAFFIC ENGINEERING DIVISION			
PAUL D. GUNZELMAN P.E.	TRAFFIC ENGINEER	SCALE	NO SCALE