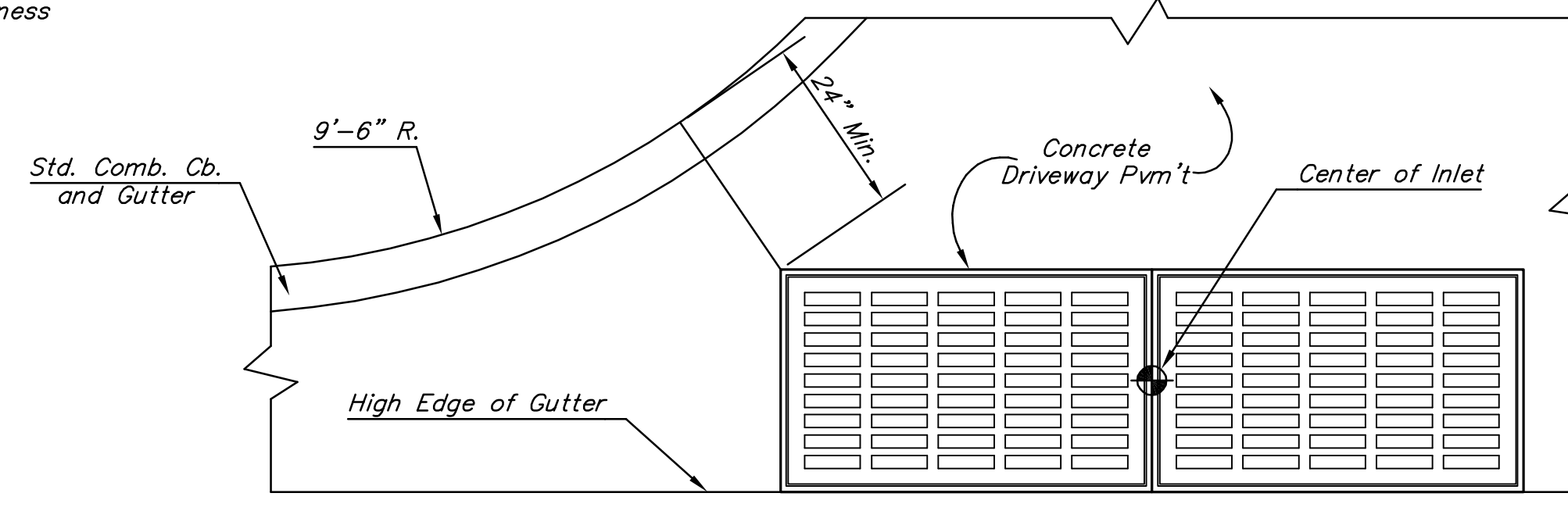


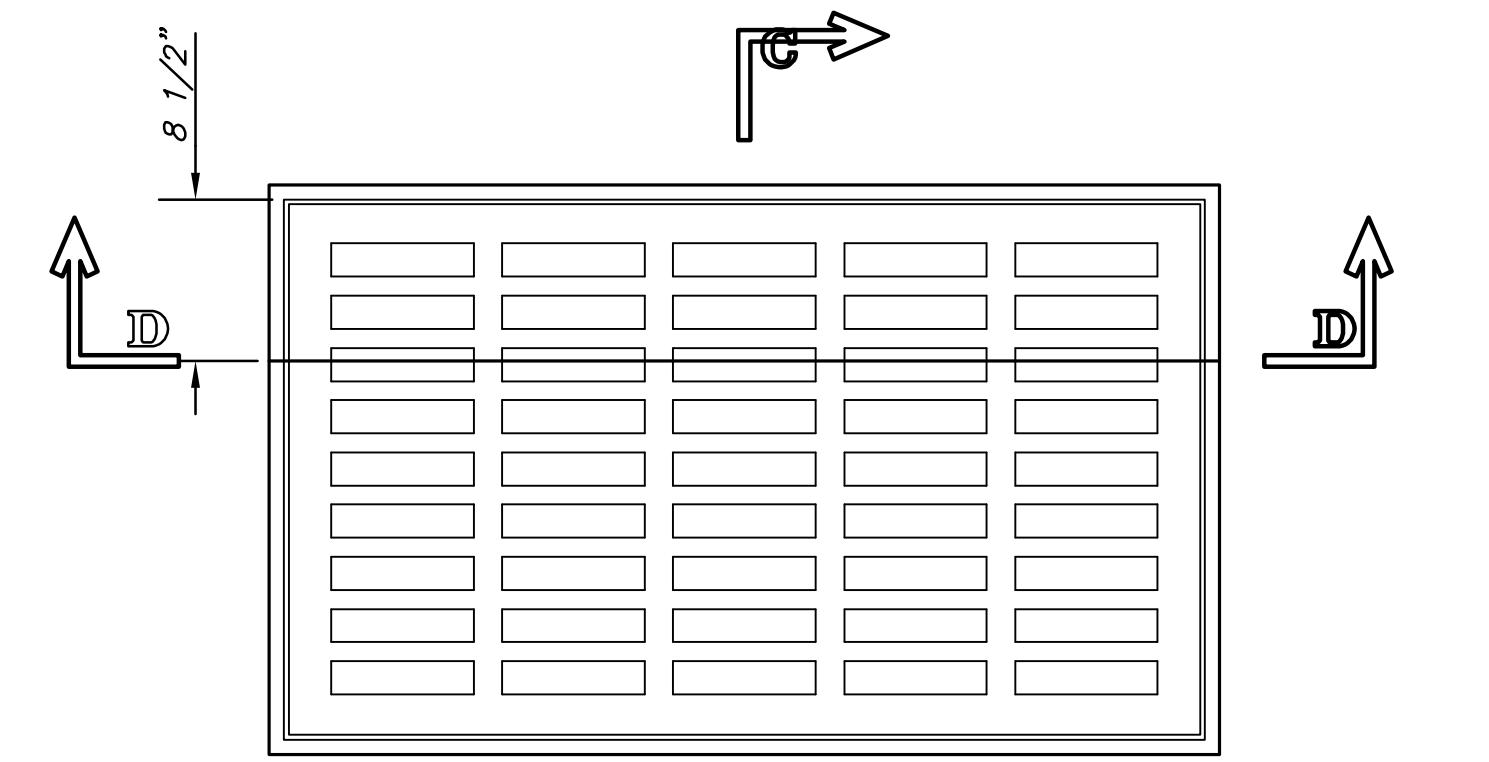
SECTION B-B



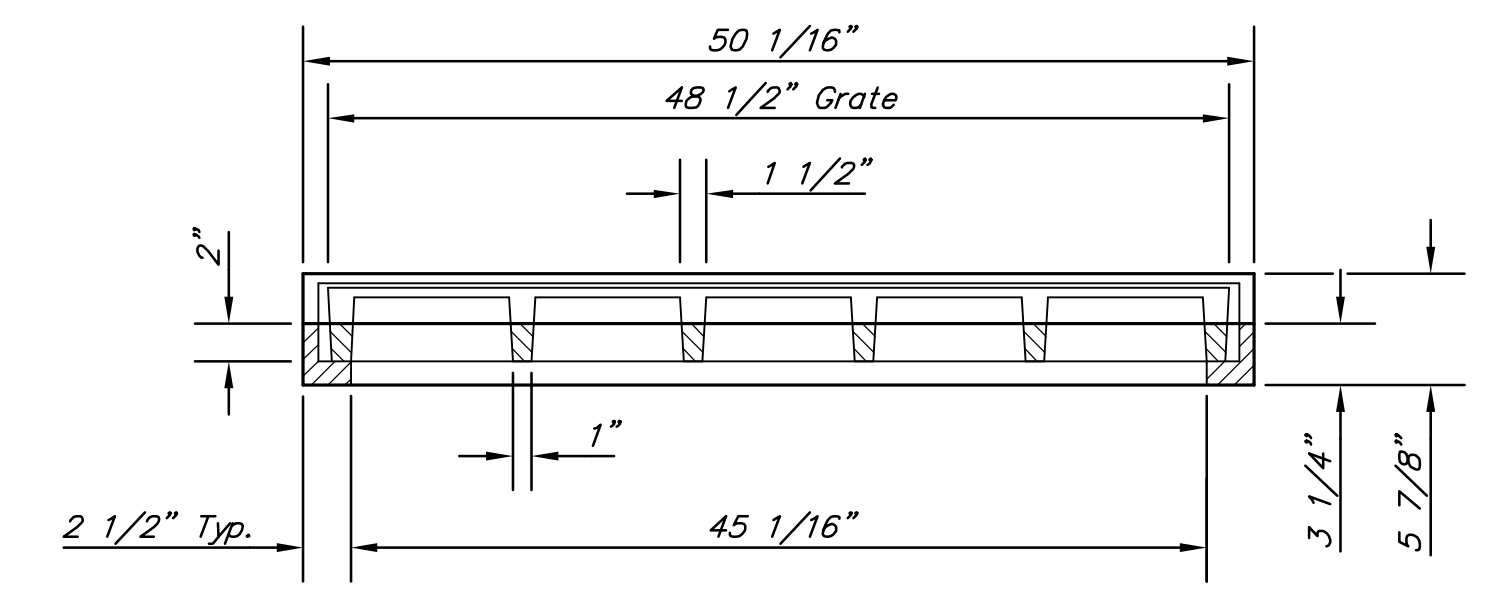
PLAN

GENERAL NOTES

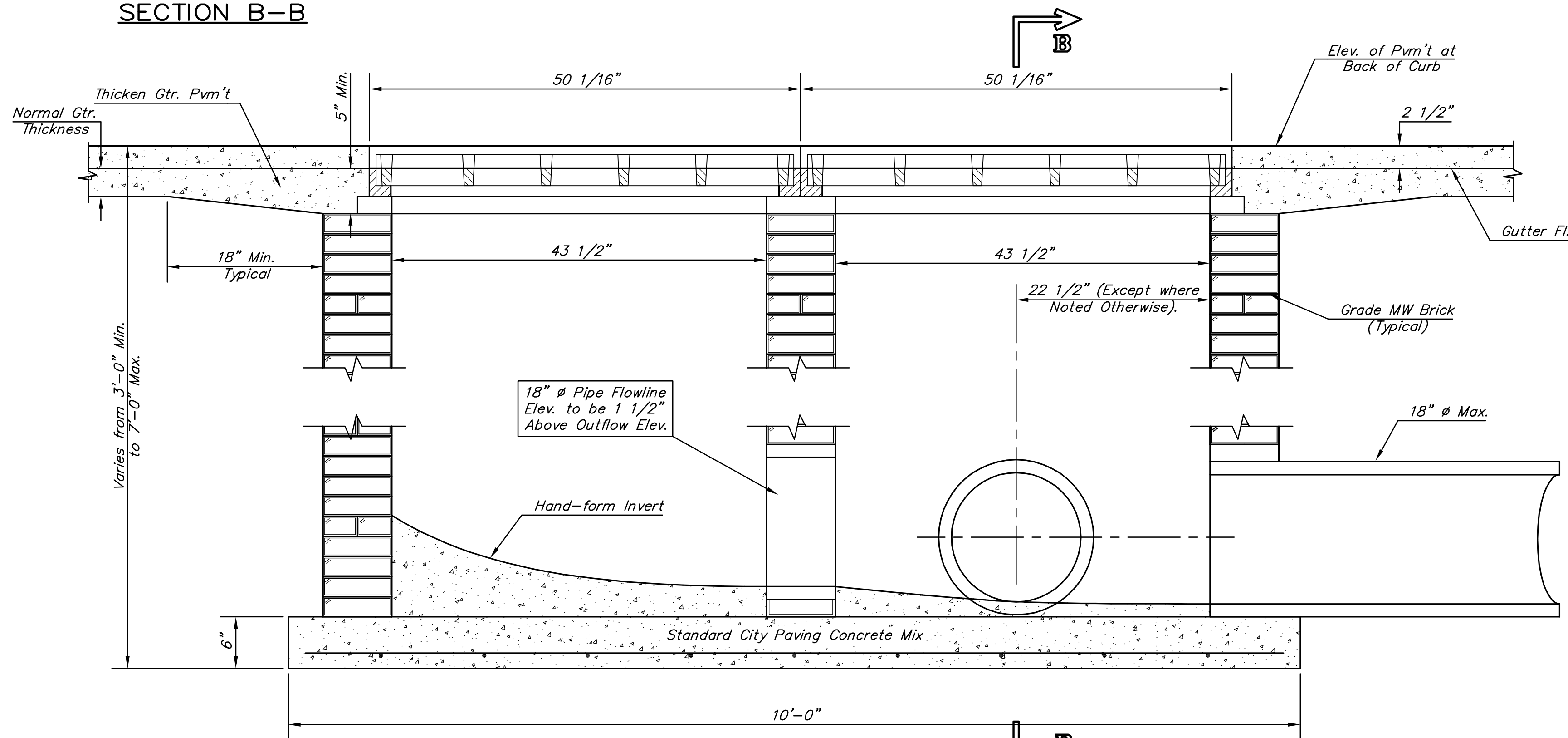
1. Grate frames to be installed on thin mortar cushion to insure full support along brick walls. Concrete used for inlet construction shall be concrete pavement mix.
2. Inlet invert shall be shaped with 8 sack sand mix concrete to create flow channels and to increase hydraulic efficiency such that the inlet will be self cleaning between all inlet and/or outlet pipes.
3. The ends of all pipes installed in inlets shall be cut off flush with the inside face of the inlet wall.
4. Inlet Frames and Grates to be two (2) Deeter #2095 or approved equal.



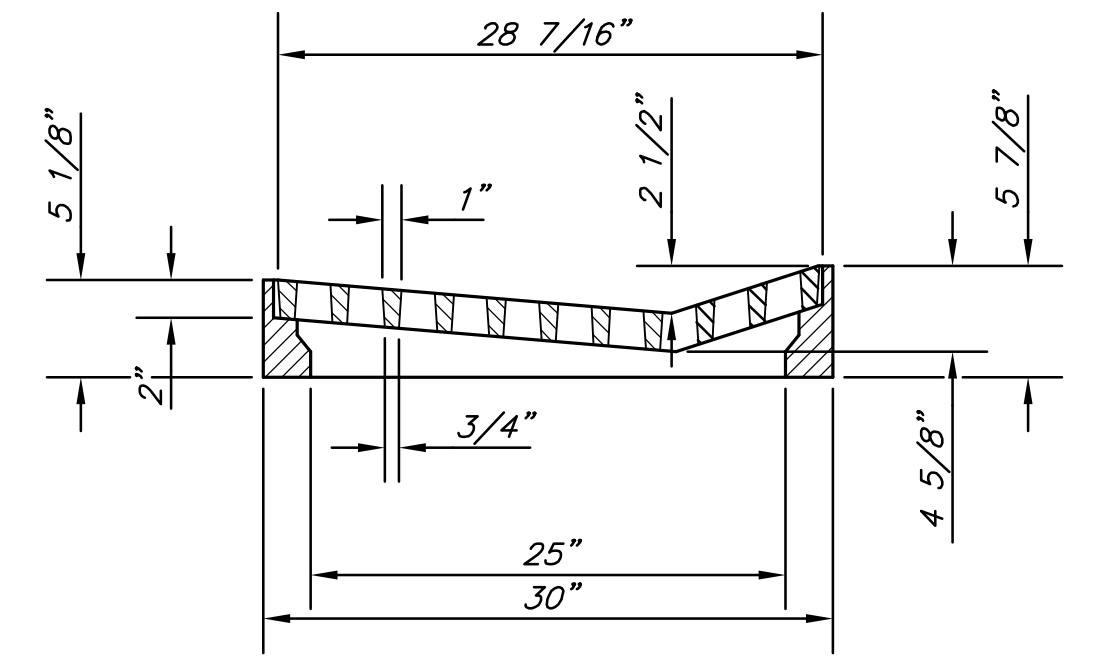
PLAN



SECTION D-D



SECTION A-A



SECTION C-C

DEETER #2095 FRAME & GRATE
 TOTAL WEIGHT: 705 lbs.
 (2 Each Required)

J:\Civil\04177\ADDENDUM PLANS\04177ADD_Dbl Grate.dwg 11/15/2007 11:46:32 AM CST

ADDENDUM TO: UTILITY IMPROVEMENTS 17TH STREET AT BSNF RAIL COORIDOR
 PROJECT NAME

DRIVEWAY GRATED INLET - DOUBLE
 SHEET TITLE

JRA DESIGN BY:	DPG DRAWN BY:	JRA CHECKED BY:
SEPTEMBER 2007 DATE	04177 JOB NO.	11 / 28 SHEET/OF

411 N. WEBB ROAD
 WICHITA, KS. 67206
 316 - 684 - 9600