

FHWA REGION	STATE	PROJECT NO.	YEAR	SHEET NO.	TOTAL SHEETS
7		87ER-164(1)	94	2	28

P.O.T. Sta. 7+02.07
 3/4" Iron Pipe @ P.O.T.
 37.15' N.E. to Chiseled "+" on top curb
 39.03' S.E.
 55.80' E. to 3/4" Iron Pipe at back of curb

P.O.T. Sta. 7+57.87
 3/4" Iron Pipe @ P.O.T.
 16.63' S.E. to nail & cap in Elm tree
 30.54' N. to Chiseled "+" on top curb
 66.50' S.S.E. to 1/2" rebar, R-43 Flood control trav.

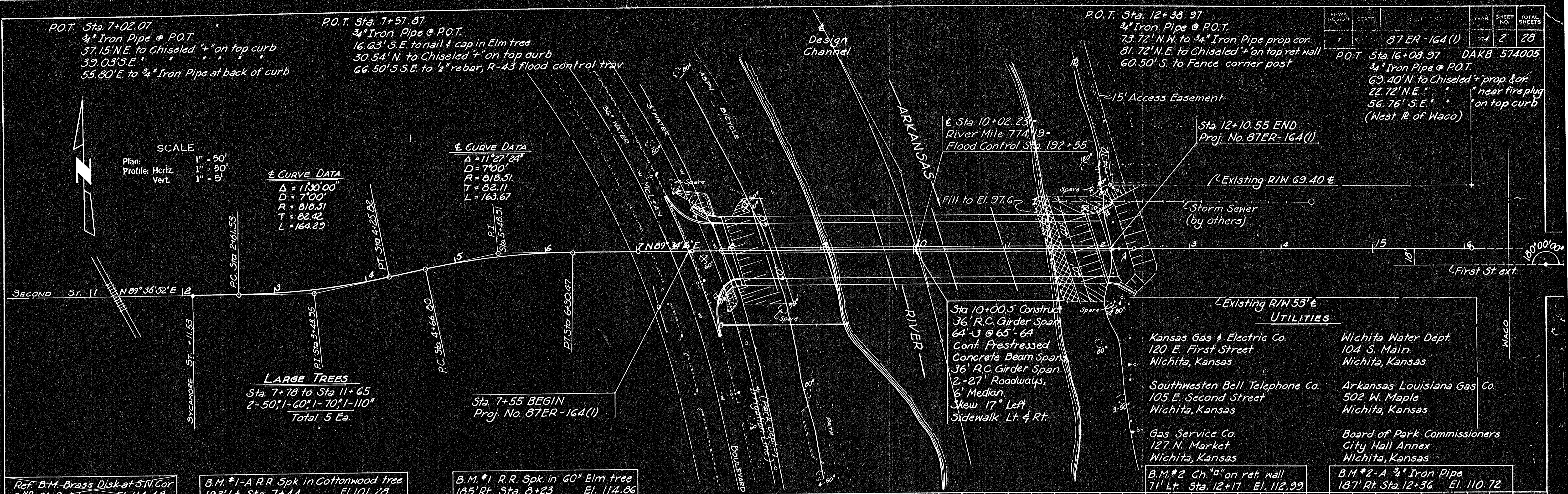
P.O.T. Sta. 12+38.97
 3/4" Iron Pipe @ P.O.T.
 73.72' N.W. to 3/4" Iron Pipe prop cor.
 81.72' N.E. to Chiseled "+" on top ret. wall
 60.50' S. to Fence corner post

P.O.T. Sta. 16+08.97 DAKB 574005
 3/4" Iron Pipe @ P.O.T.
 69.40' N. to Chiseled "+" prop. & cor.
 22.72' N.E. " near fire plug
 56.76' S.E. " on top curb
 (West # of Waco)

SCALE
 Plan: 1" = 50'
 Profile: Horiz. 1" = 50'
 Vert. 1" = 5'

± CURVE DATA
 Δ = 1130.00
 D = 700'
 R = 810.51
 T = 82.42
 L = 164.29

± CURVE DATA
 Δ = 1127.24
 D = 700'
 R = 810.51
 T = 82.11
 L = 163.67



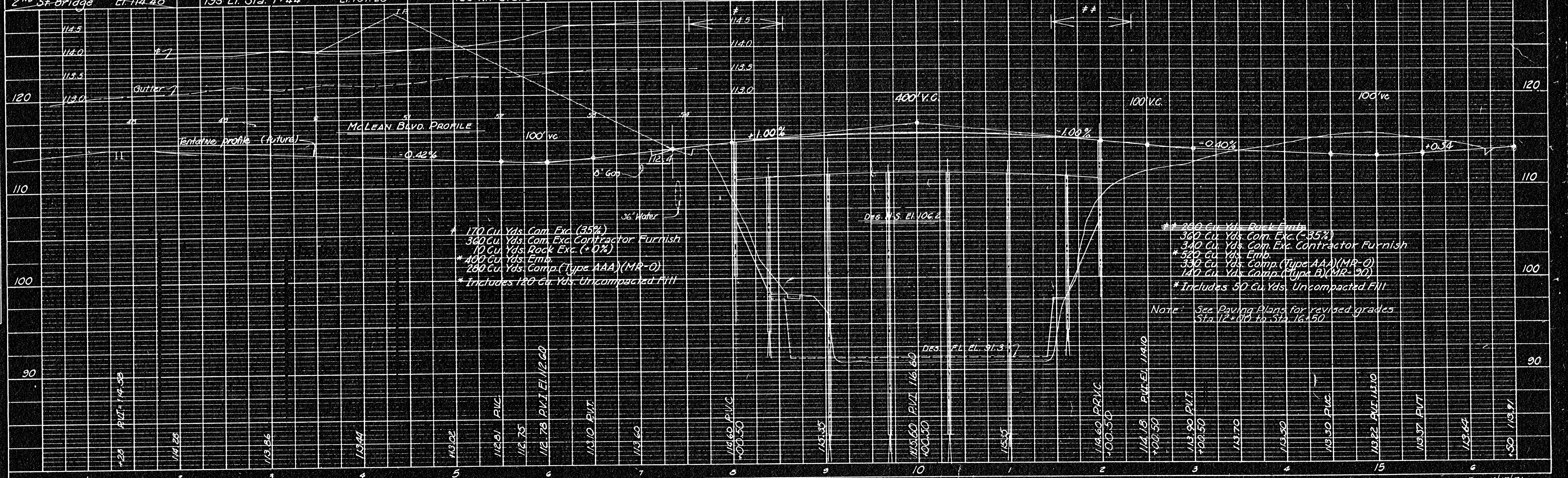
Ref. B.M. Brass Disk at SW Cor
 2nd St. Bridge El. 114.48

B.M. #1-A R.R. Spk. in Cottonwood tree
 193' Lt. Sta. 7+44 El. 101.28

B.M. #1 R.R. Spk. in 60" Elm tree
 185' Rt. Sta. 8+23 El. 114.86

B.M. #2 Ch. "a" on ret. wall
 71' Lt. Sta. 12+17 El. 112.99

B.M. #2-A 3/4" Iron Pipe
 187' Rt. Sta. 12+36 El. 110.72



* 170 Cu. Yds. Com. Exc. (35%)
 340 Cu. Yds. Com. Exc. Contractor Furnish
 10 Cu. Yds. Rock Exc. (+0%)
 * 400 Cu. Yds. Emb.
 280 Cu. Yds. Comp. (Type AAA) (MR-0)
 * Includes 120 Cu. Yds. Uncompacted Fill

* 240 Cu. Yds. Road Emb.
 360 Cu. Yds. Com. Exc. (-35%)
 340 Cu. Yds. Com. Exc. Contractor Furnish
 * 540 Cu. Yds. Emb.
 330 Cu. Yds. Comp. (Type AAA) (MR-0)
 140 Cu. Yds. Comp. (Type B) (MR-90)
 * Includes 50 Cu. Yds. Uncompacted Fill

Note: See Paving Plans for revised grades
 Sta. 12+00 to Sta. 16+50

DATE	BY

DATE	BY