

FHWA REGION NO.	STATE	PROJECT NUMBER	FISCAL YEAR	SHEET NO.	TOTAL SHEETS
7	KANSAS	(BC)96-87-K044-1(28)	1978	113	143

GENERAL NOTES

STEEL GRATE: Grate shall conform to ASTM-A36 and shall be pressure locked or welded design. It shall have 1/4" x 1/8" bearing bars @ 1/4" ctrs. and 1/2" x 1/8" cross bars @ 4" ctrs.

STEEL TUBE: Tubes shall conform to ASTM-A501.

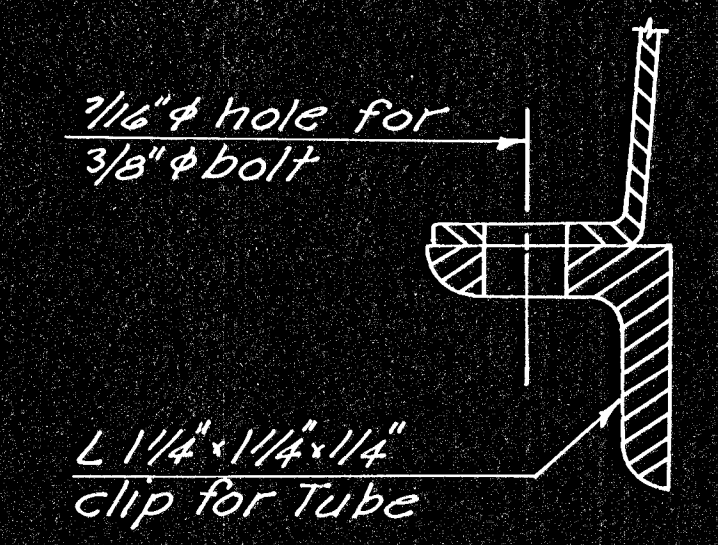
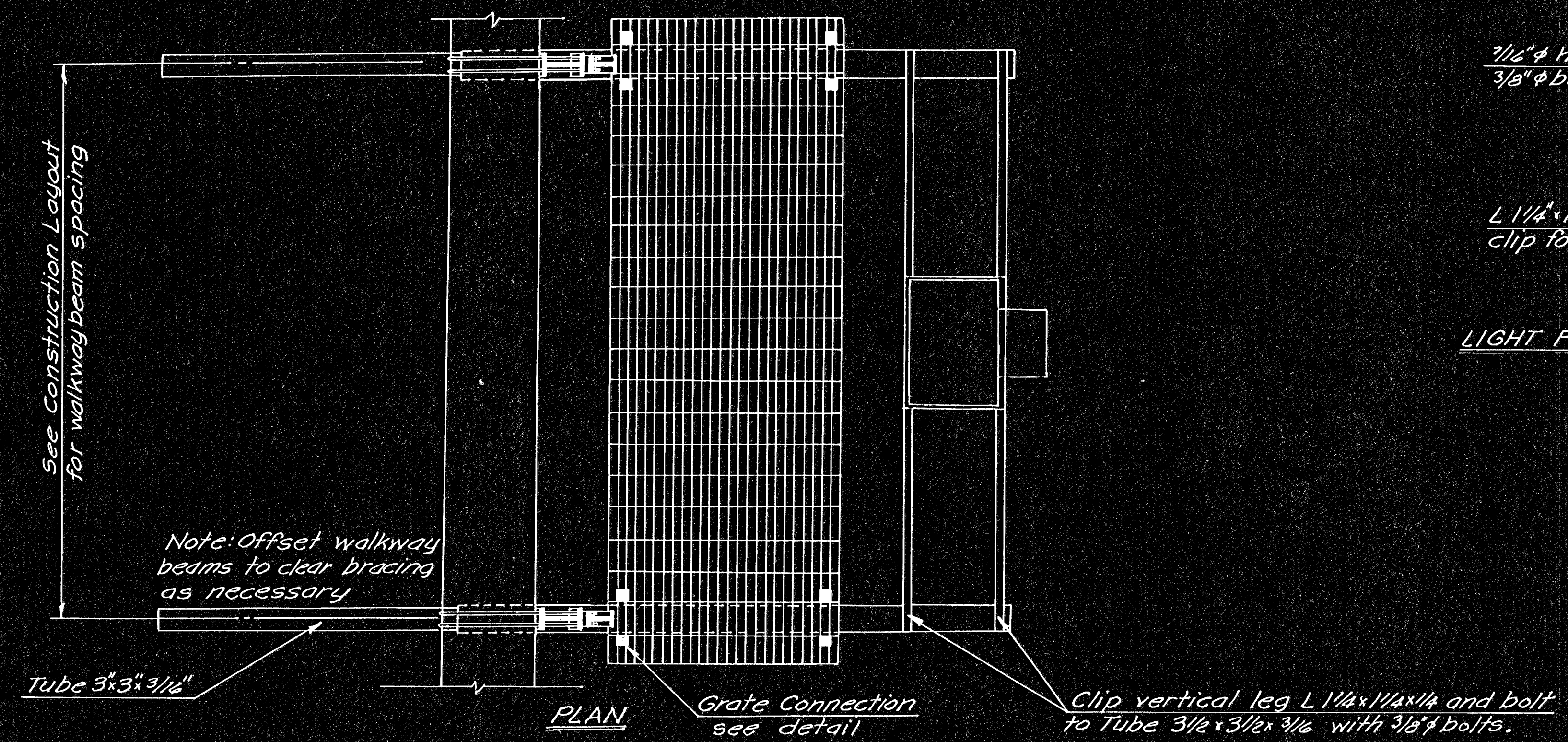
STRUCTURAL STEEL: All shape and plates shall conform to ASTM-A36.

BOLTS: All miscellaneous fasteners shall conform to Kansas Highway Comm Standard Specifications and shall be coated.

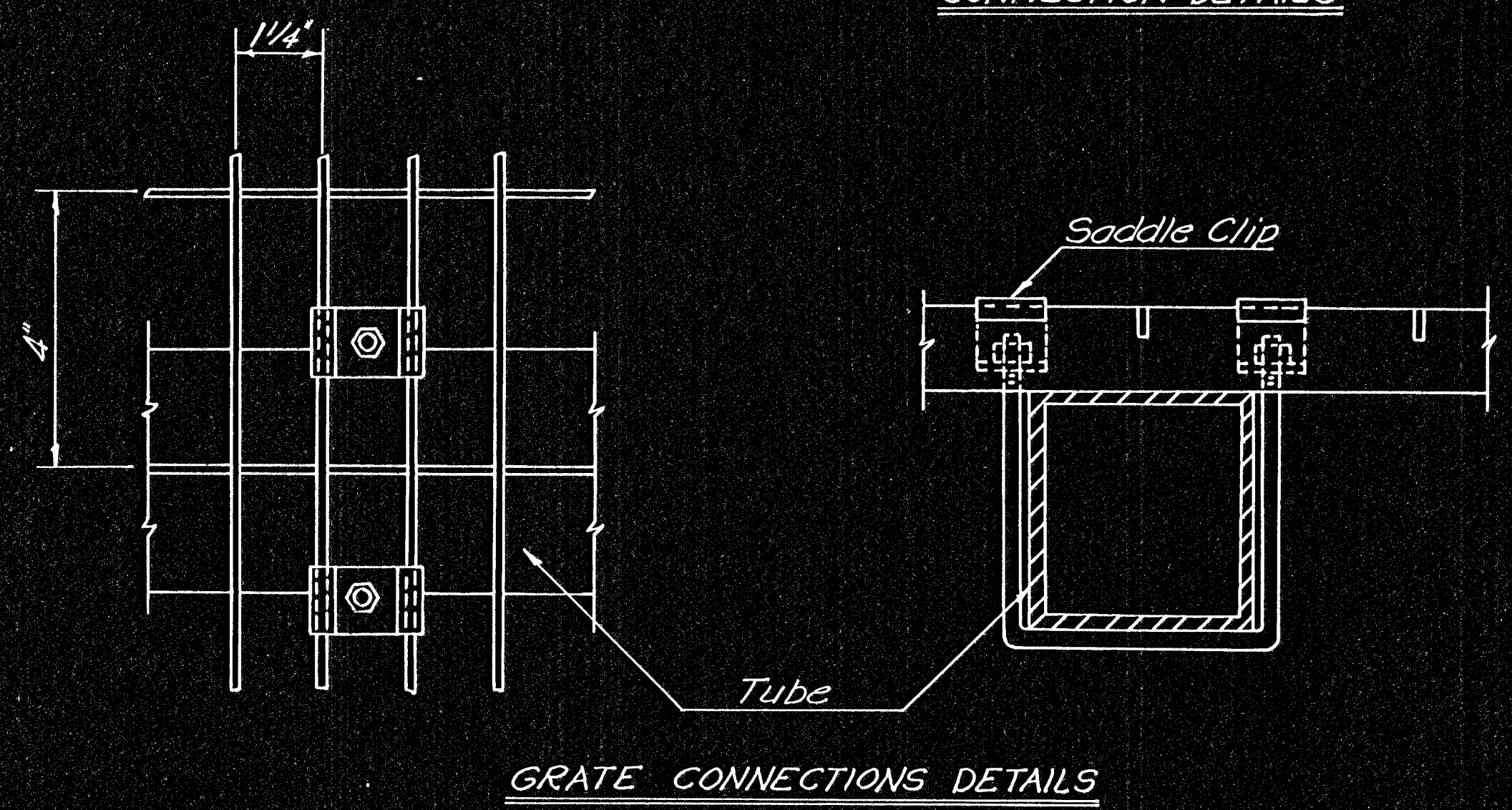
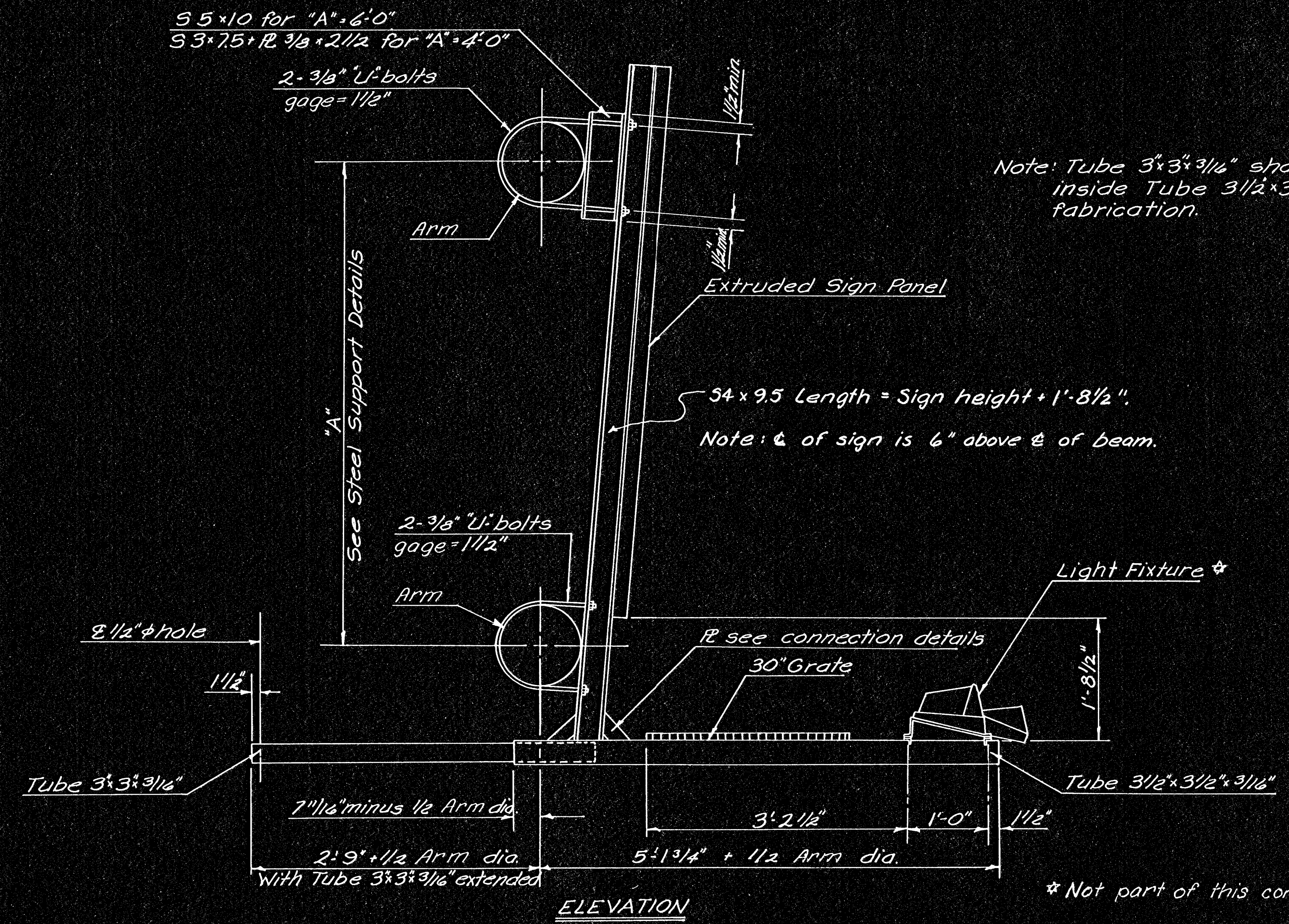
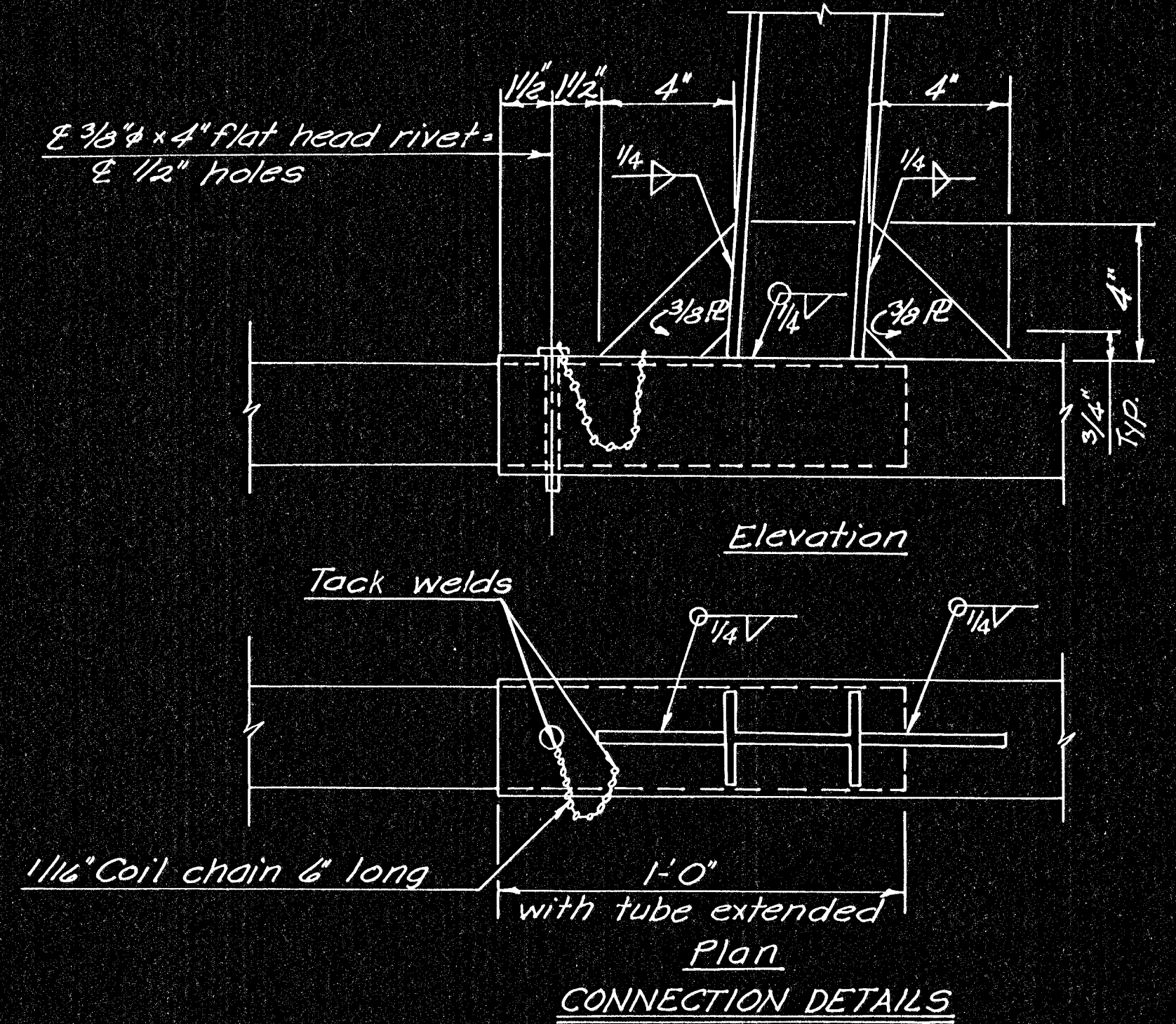
GALVANIZING: All material shall be Hot Dipped galvanized according to ASTM-A123 after fabrication. Any damage to the coating shall be repaired after erection.

WELDING: All welding shall conform to Kansas Highway Comm Standard Specifications and the latest edition of A.W.S. Specifications.

OPTIONS: Contractor may use either walkway option #1 or #2.



LIGHT FIXTURE MOUNTING ANGLE



\* Not part of this contract

NO.	DATE	REVISIONS	BY	APP'D
3				
2				
1				

KANSAS DEPARTMENT OF TRANSPORTATION  
STANDARD STRUCTURAL SIGN SUPPORT  
CANTILEVER TYPE OVERHEAD  
STEEL SIGN MOUNTING AND  
WALKWAY DETAILS OPT. NO.1

SHEET NO. 113 OF 143 SCALE: Varies APP'D: KBA  
DESIGNED: RJA DETAILED: RJA QUANTITIES: TRACED: KBA  
DESIGN CK: N/W DETAIL CK: N/W QUAN. CK: TRACE CL: B/W