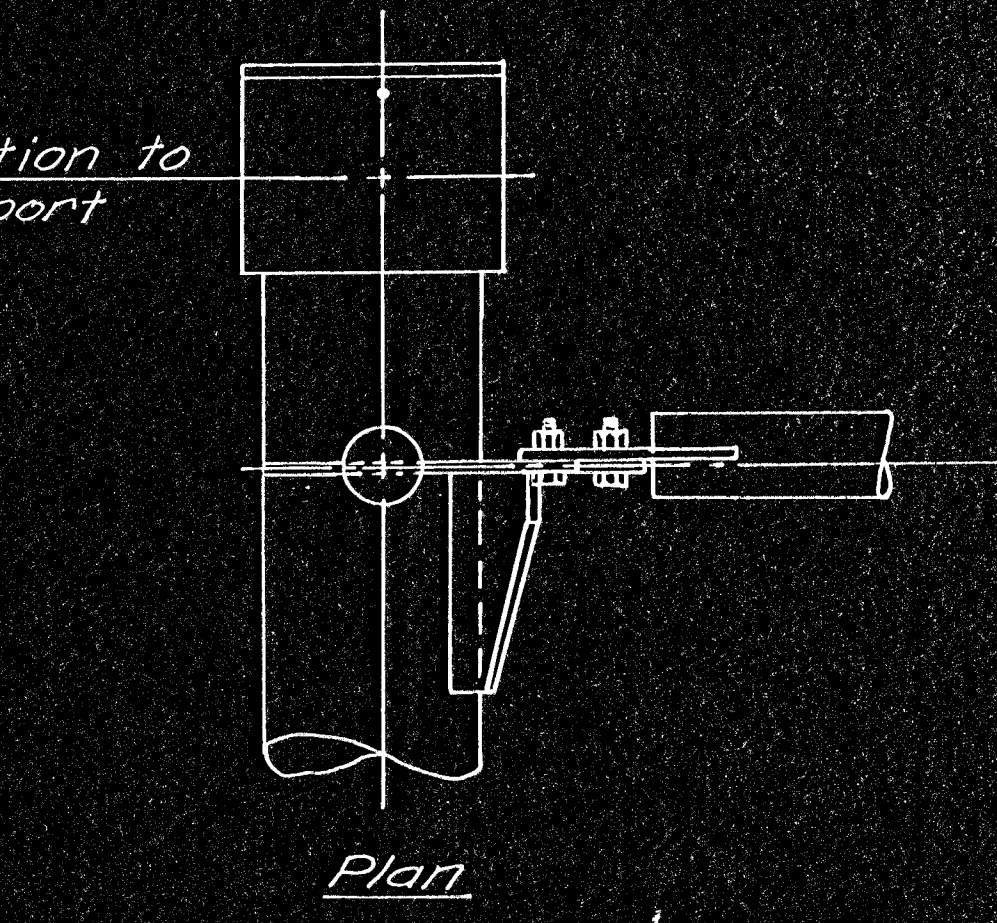
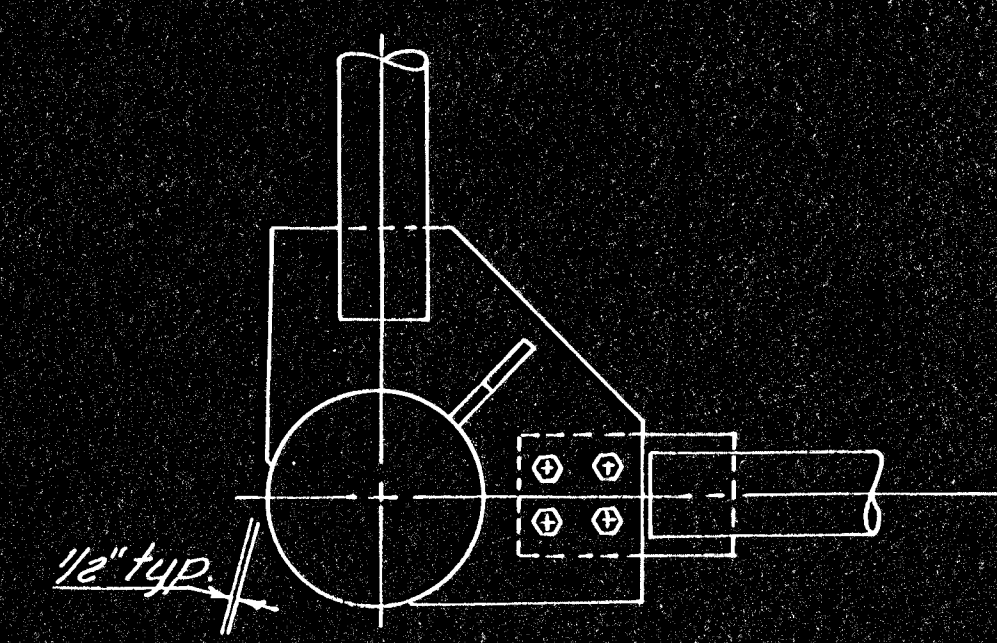


FHWA REGION NO.	STATE	PROJECT NUMBER	FISCAL YEAR	SHEET NO.	TOTAL SHEETS
7	KANSAS	(BC) 96-87-K044-1 (28)	1978	133	143

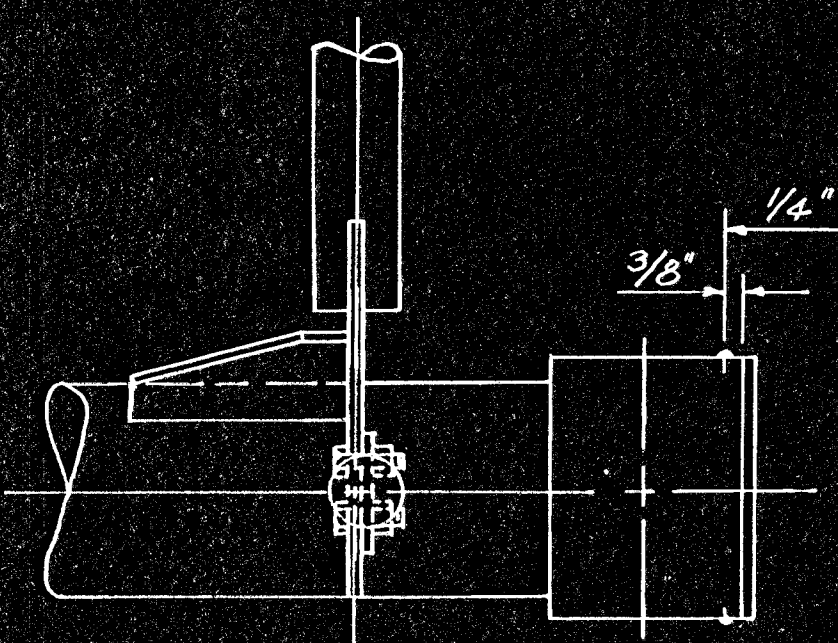
& Connection to End Support



Plan



Section

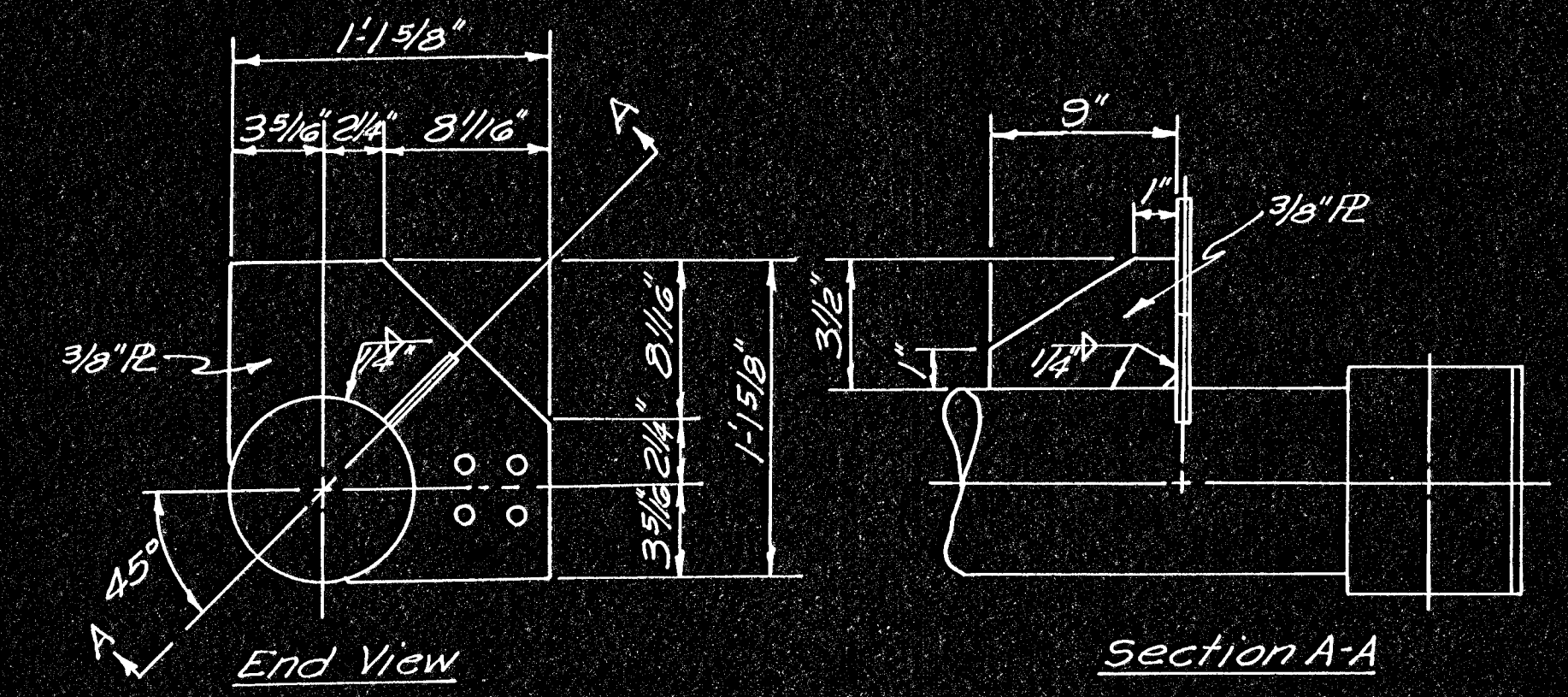


Side Elevation

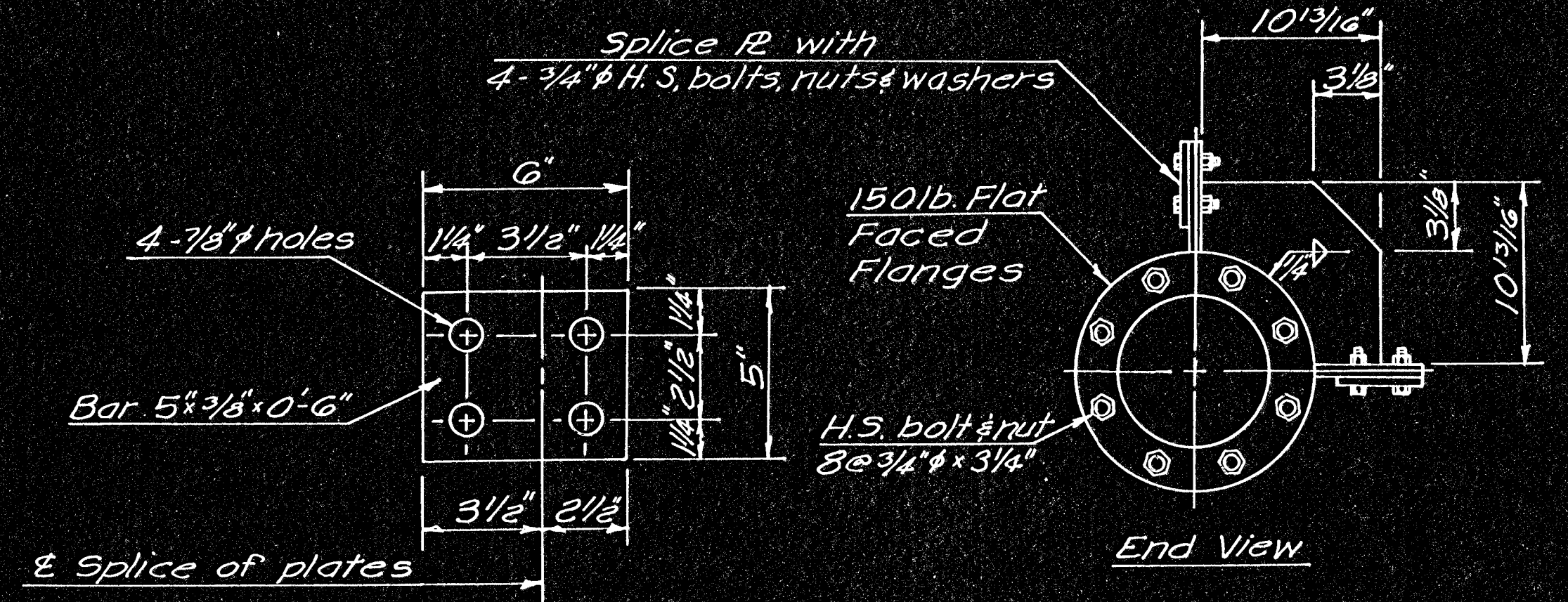
1/4" Round Head Set Screws

1/8" typ

DETAILS END JOINT TYPE I

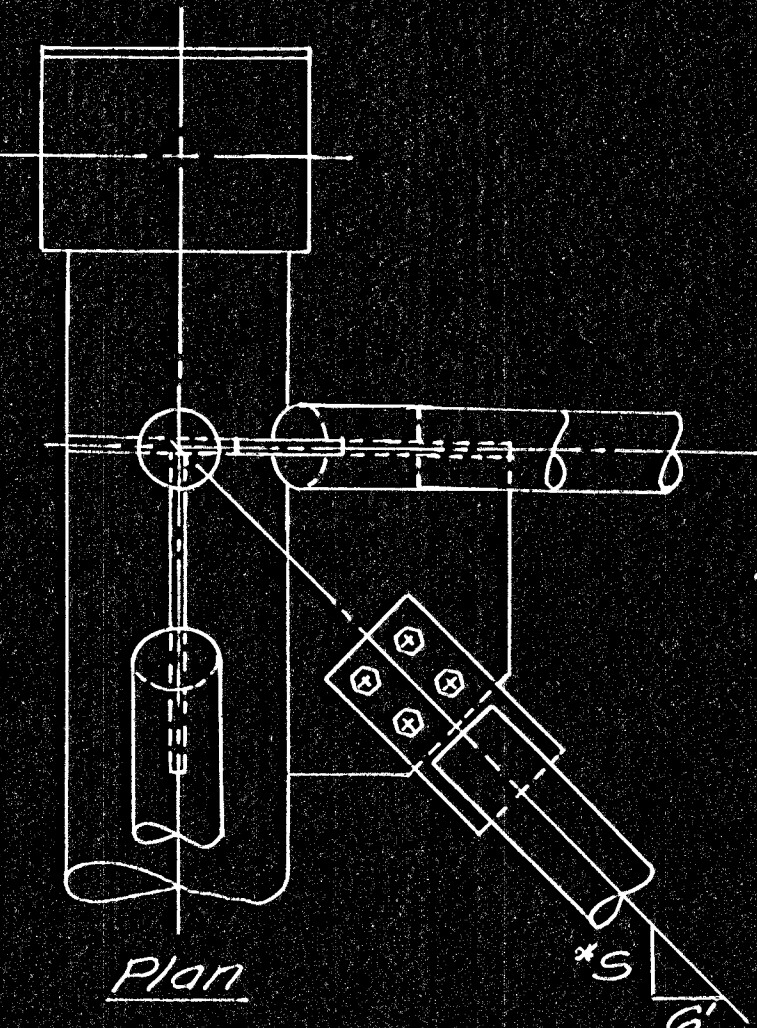


TYPE I JOINT DETAILS

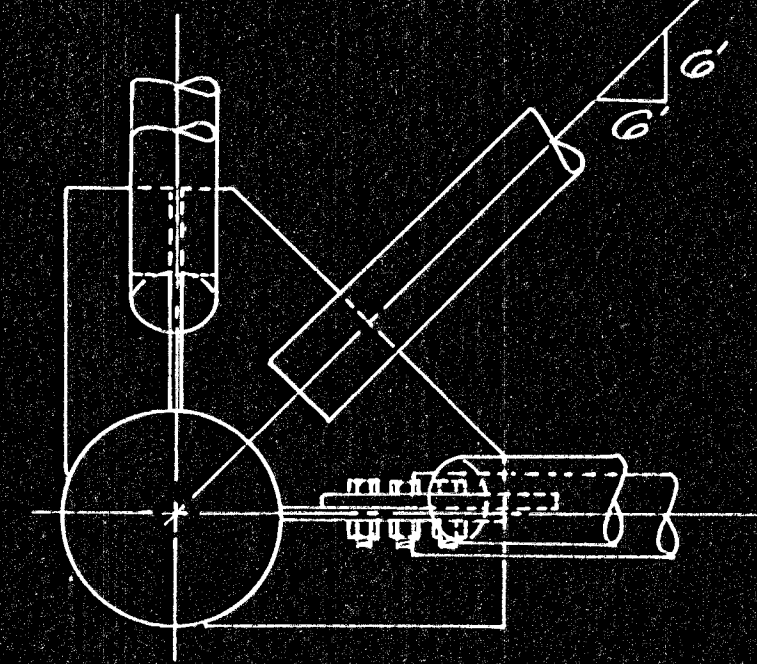


SPLICE R DETAILS

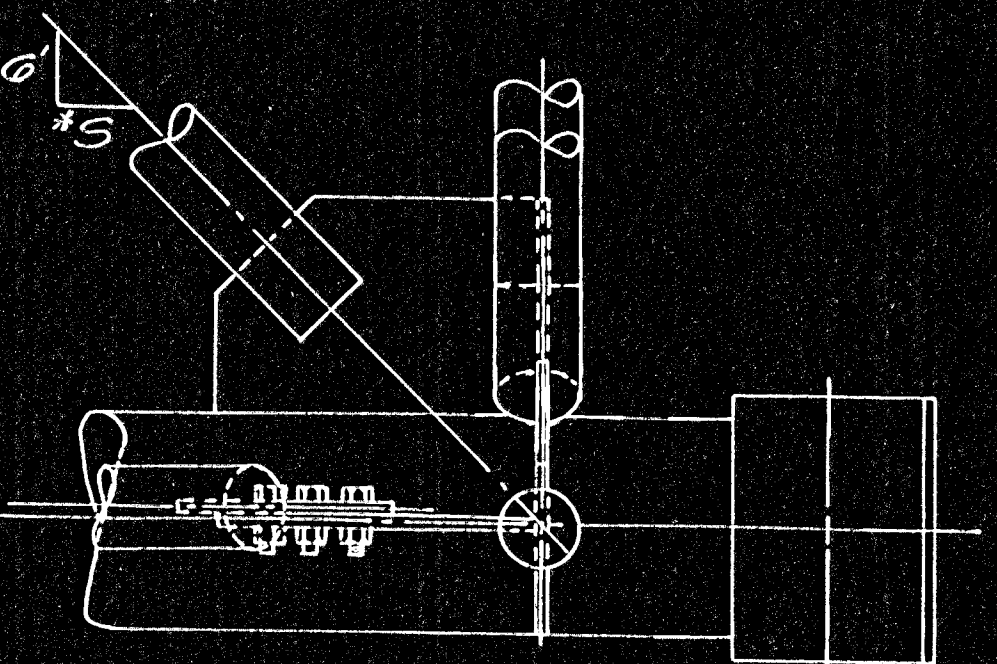
& Connection to End Support



Plan



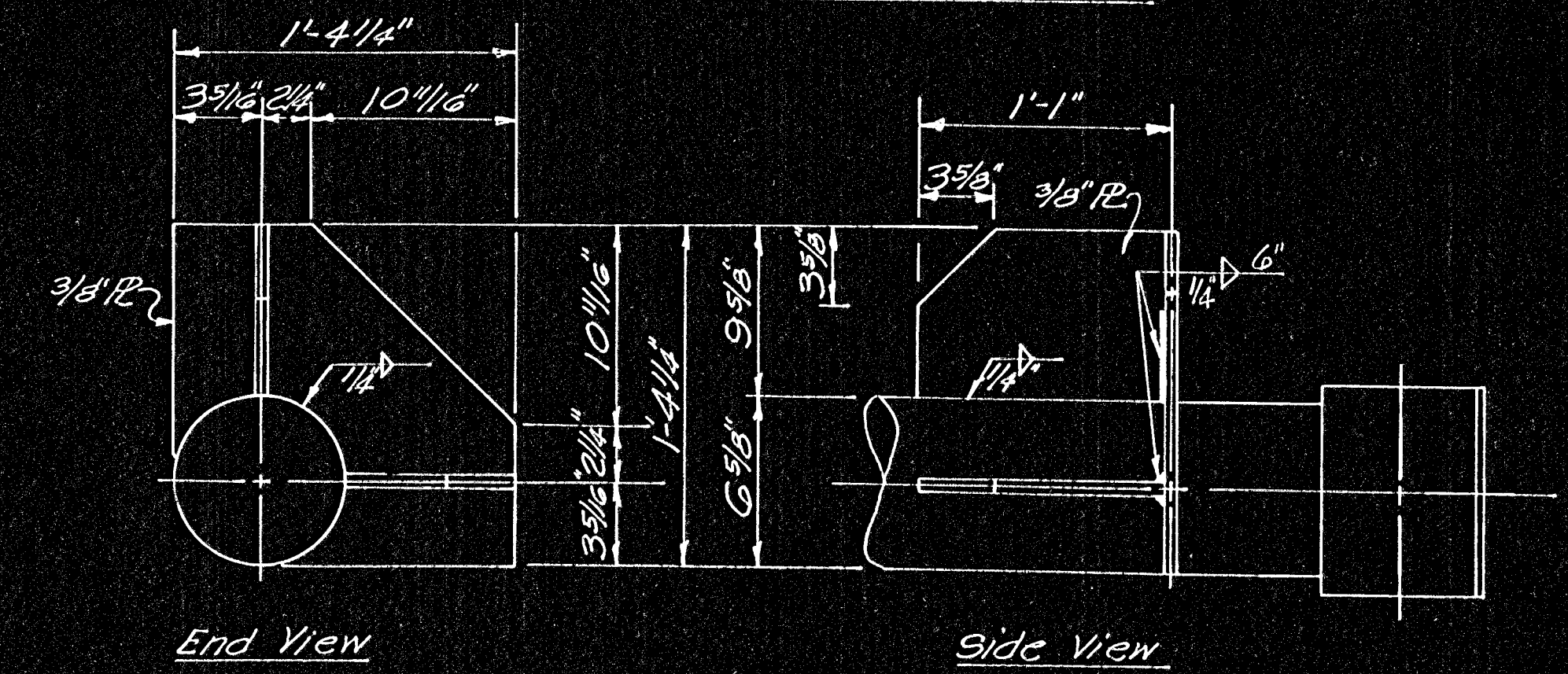
Section



Side Elevation

Note: Washers for 1" bolts in TYPE II JOINTS will require 1/8" clip to clear weld.

DETAILS END JOINT TYPE II

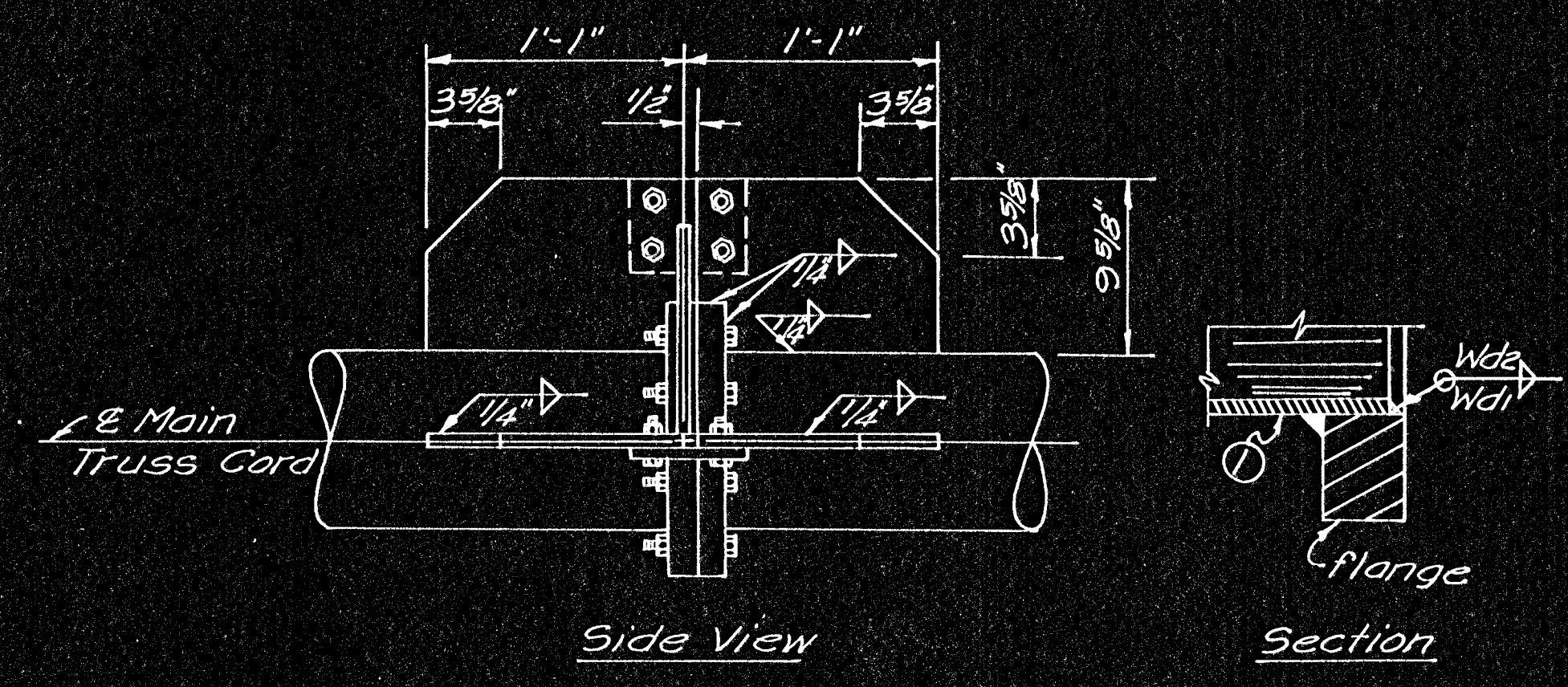


TYPE II JOINT DETAILS

\*See Construction Layout for wall thickness and "S".

Member	Filler
1	wall weld
thickness	size weld
0.183	3/16"
0.219	1/2"
0.220	5/16"
0.344	3/16"
0.432	3/8"

Note: Weld depth to be equal to pipe thickness build out to obtain full throat.



TRUSS SPLICE DETAILS

NO.	DATE	REVISIONS	BY	APP'D

DEPARTMENT OF TRANSPORTATION-KANSAS  
STANDARD STRUCTURAL SIGN SUPPORTS  
SPAN TYPE OVERHEAD  
STEEL TRUSS  
END JOINT AND SPLICE DETAILS

DESIGNED BY BEM SCALE 1/4" = 1'-0" APP'D  
 DETAILER RDM QUANTITIES RBA  
 DESIGN CK. RDM DETAIL CK. RDM QUAN. CK. RBA TRACE CK. BEM

8-75