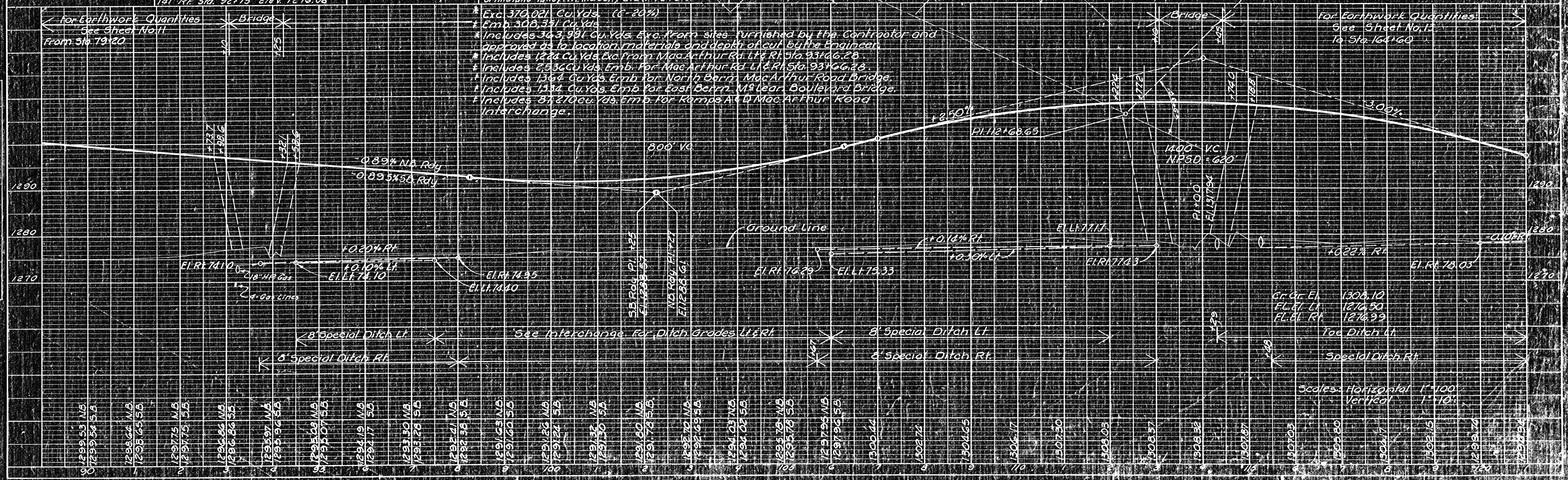
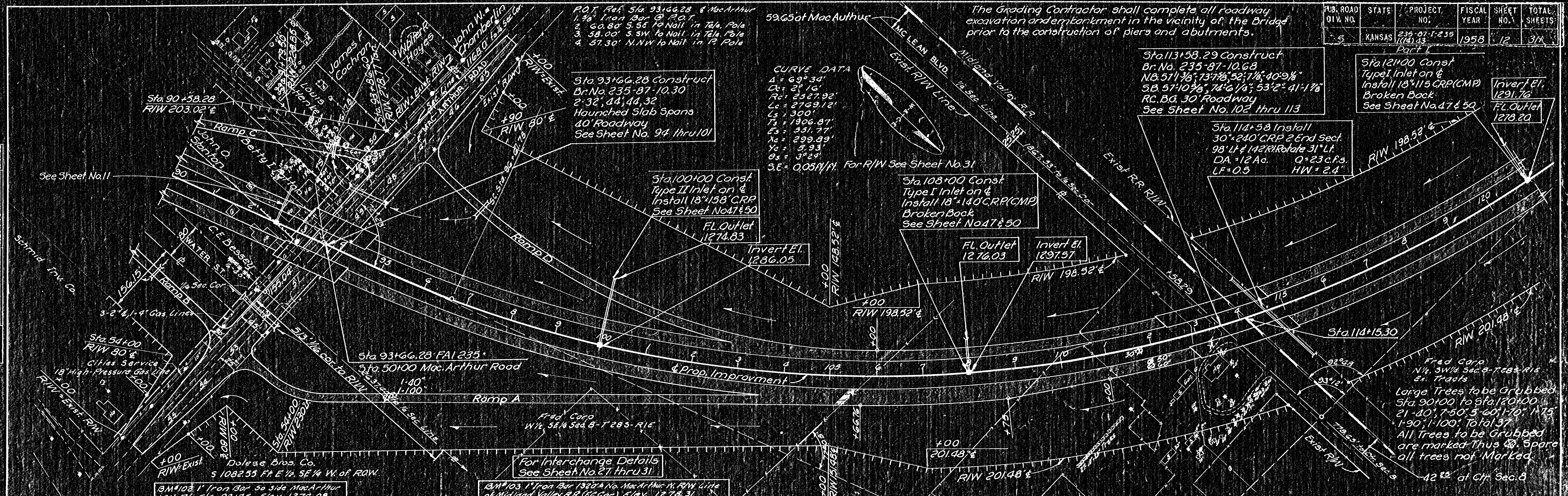


PUB. ROAD DIV. NO.	STATE	PROJECT NO.	FISCAL YEAR	SHEET NO.	TOTAL SHEETS
5	KANSAS	235-87-1-235 (116) 23	1958	12	37

DATE	BY	REVISION
10/22/57	W. J.
11/15/57	W. J.
12/15/57	W. J.
1/15/58	W. J.
2/15/58	W. J.
3/15/58	W. J.
4/15/58	W. J.
5/15/58	W. J.
6/15/58	W. J.
7/15/58	W. J.
8/15/58	W. J.
9/15/58	W. J.
10/15/58	W. J.
11/15/58	W. J.
12/15/58	W. J.

DATE	BY	REVISION
10/22/57	W. J.
11/15/57	W. J.
12/15/57	W. J.
1/15/58	W. J.
2/15/58	W. J.
3/15/58	W. J.
4/15/58	W. J.
5/15/58	W. J.
6/15/58	W. J.
7/15/58	W. J.
8/15/58	W. J.
9/15/58	W. J.
10/15/58	W. J.
11/15/58	W. J.
12/15/58	W. J.



Exc 370,021 Cu. Yds. (6-20%)
 Emb. 308,351 Cu. Yds.
 Includes 303,991 Cu. Yds. Exc. from sites furnished by the Contractor and approved as to location, materials and depth of cut by the Engineer.
 Includes 1224 Cu. Yds. Exc. from MacArthur Rd. L.R. Sta. 93+46.28.
 Includes 2,936 Cu. Yds. Emb. for MacArthur Rd. L.R. Sta. 93+46.28.
 Includes 1364 Cu. Yds. Emb. for North Berrin MacArthur Road Bridge.
 Includes 1334 Cu. Yds. Emb. for East Berrin MacArthur Road Bridge.
 Includes 81,410 Cu. Yds. Emb. for Ramps A & B MacArthur Road Interchange.

For Earthwork Quantities See Sheet No. 11 From Sta 79+20

For Earthwork Quantities See Sheet No. 13 To Sta 161+60

Gr. Gr. El. 1304.10
 FL. Gr. Lt. 1276.50
 FL. Gr. Rt. 1276.99

Scales: Horizontal 1"=100'
 Vertical 1"=10'