

Gosson Livingston

Architecture
420 South Emporia
Wichita, KS 67202
Tel: (316) 265-8367
Fax: (316) 265-5646
Email: architecture@gl.com

© 2007 Gosson Livingston Associates, Inc.

The drawing and all information herein is the exclusive property of Gosson Livingston Associates, Inc. and is not to be copied or used in any way without the express written consent of Gosson Livingston Associates, Inc. All drawings, specifications, ideas, designs and arrangements appearing herein constitute the original and unpublished work of Gosson Livingston Associates, Inc.



Johnson & Associates, Inc.
100 E. California Ave. - Third Floor
Oklahoma City, OK 73104
(405) 235-8075 FAX (405) 235-8078
Certificate of Authorization #E-1128 EXP. DATE: 12-31-2008



WATERWALK

**PUBLIC
IMPROVEMENTS
PHASE 2
PACKAGE 3**

Mark	Date	Description
	12/17/07	BID SET
	4/25/07	FIELD CHECK SET

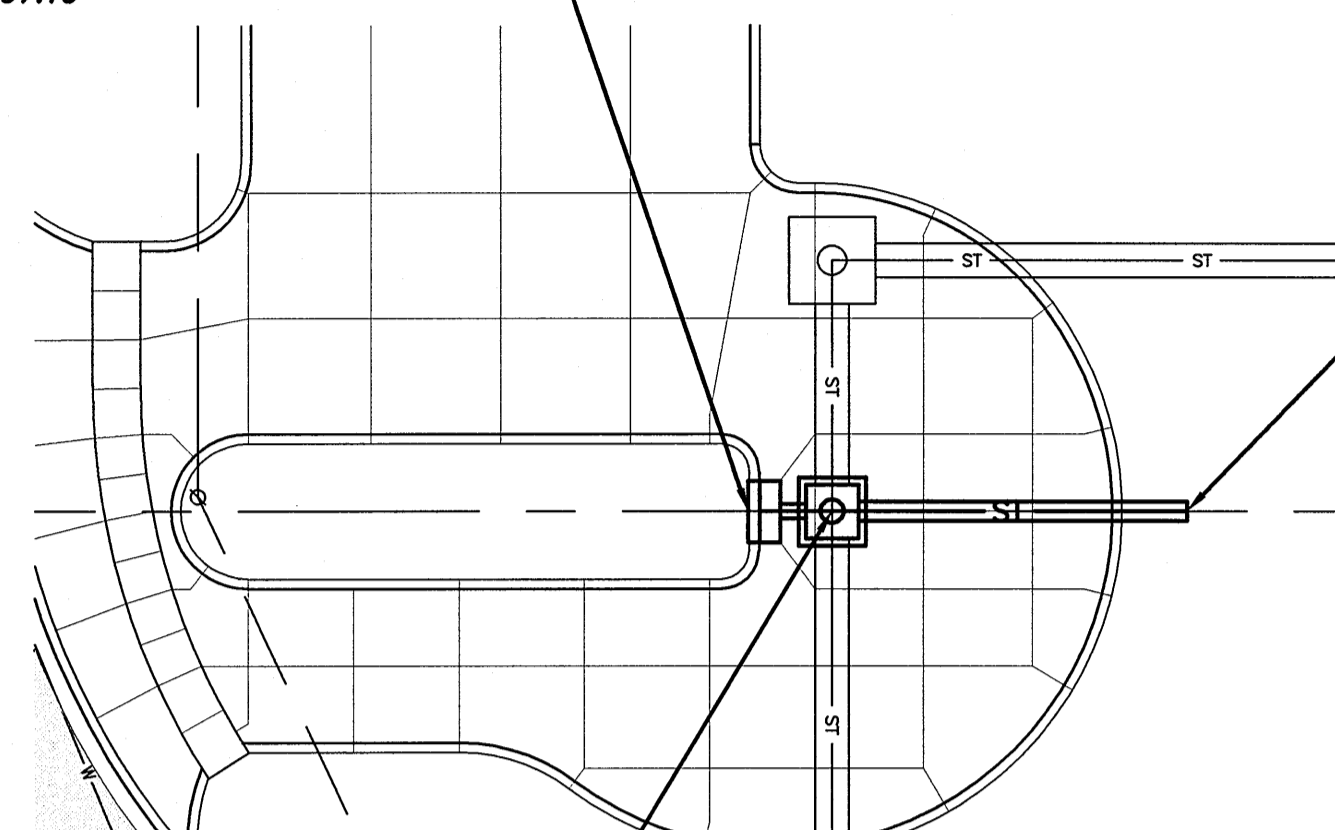
STORM SEWER LINE 12

Job No.	12-17-07	ST1.1 OF 1 Dwg. 18 of 44
Date		
Drawn	B.C.	
Checked	P.B.	

DATE PLOTTED: 12/17/07 10:17 AM, JOB: 12-17-07, PLOT: 18 OF 44, PLOT SCALE: 1"=20'

PLAN:
SCALE: 1"=20'
PROFILE:
SCALE: 1"=20' (HORIZ.)
1"= 4' (VERT.)
PLAN:
SCALE: 1"=20'
PROFILE:
SCALE: 1"=20' (HORIZ.)
1"= 4' (VERT.)

N=9185.8923 E=10453.8053
STORM SEWER LINE NO. 12, STA. 9+91.23
CONST. 1--SPECIAL DOUBLE TYPE II CURB INLET
TOP CURB=1297.10

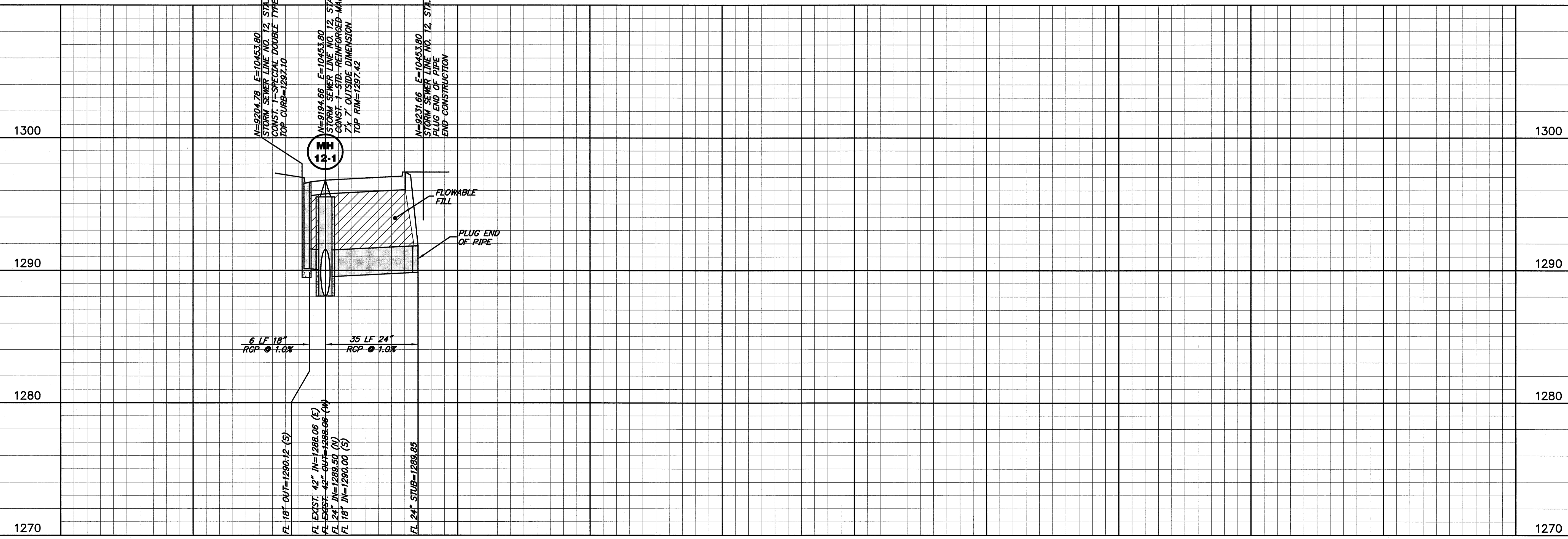


N=9231.6598 E=10453.8025
STORM SEWER LINE NO. 12, STA. 10+35
PLUG END OF PIPE
END CONSTRUCTION

N=9194.6598 E=10453.8048
STORM SEWER LINE NO. 12, STA. 10+00
CONST. 1--STD. REINFORCED CONCRETE MANHOLE
AROUND EXISTING 42" RCP, 5'Lx 5'Wx 6'H (I.D.)
TR=1296.79

MH
12-1

N=9204.78 E=10453.80
STORM SEWER LINE NO. 12, STA. 10+10.12
CONST. 1--SPECIAL DOUBLE TYPE II CURB INLET
TOP CURB=1297.10
N=9194.66 E=10453.80
STORM SEWER LINE NO. 12, STA. 10+00
CONST. 1--STD. REINFORCED MANHOLE
7x 7' OUTSIDE DIMENSION
TOP RIM=1297.42
N=9231.66 E=10453.80
STORM SEWER LINE NO. 12, STA. 10+37
PLUG END OF PIPE
END CONSTRUCTION



6 LF 18" RCP @ 1.0%
35 LF 24" RCP @ 1.0%

FL 18" OUT=1290.12 (S)
FL EXIST. 42" IN=1298.06 (E)
FL EXIST. 42" OUT=1296.66 (W)
FL 24" IN=1298.50 (N)
FL 18" IN=1290.00 (S)
FL 24" STUB=1298.85

LINE 12

10+00 11+00