

P.O.T. Ref. Sta. 133+28.30 @
 1. 78' from 3rd P.O.T.
 2. 70.75' N.W. Cor. Fnd. of House
 3. 64.45' N.W. Cor. Fnd. of House
 4. 80.60' W. Spk. in P. Post N.S. & Line

P.O.T. Ref. Sta. 171+69.47
 1. 78' from 3rd P.O.T.
 2. 80.61' S.E. Spk. Washer in Post P. Post
 3. 93.72' N. Spk. Washer in 20' Elm
 4. 15.26' S.W. P.A. Spk. in P. Pole

PUB. ROAD DIV. NO.	STATE	PROJECT NO.	FISCAL YEAR	SHEET NO.	TOTAL SHEETS
5	KANSAS	A-35-971-A35-11128	1958	6	69

Sta. 153+50 Construct Type III Inlet 19.5' Rt. & Install 1.5" x 58' CRP (MAC) See Sheet No. 19# 20

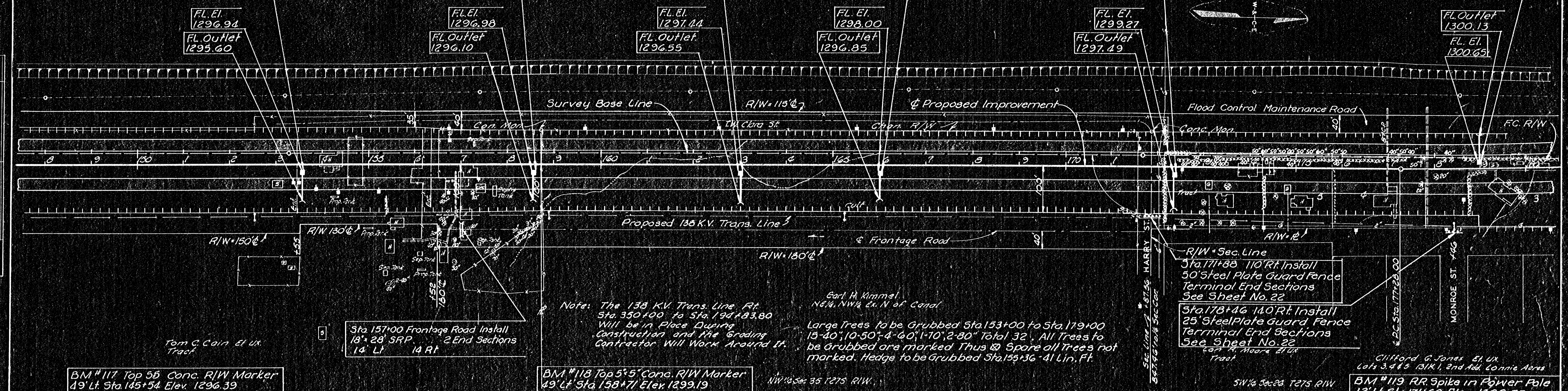
Sta. 158+50 Construct Type III Inlet 19.5' Rt. & Install 1.5" x 56' CRP (MAC) See Sheet No. 19# 20

Sta. 163+00 Construct Type III Inlet 19.5' Rt. & Install 1.5" x 56' CRP (MAC) See Sheet No. 19# 20

Sta. 166+00 Construct Type III Inlet 19.5' Rt. & Install 1.5" x 56' CRP (MAC) See Sheet No. 19# 20

Sta. 172+35 Construct Type III Inlet 19.5' Rt. & Install 1.5" x 58' CRP (MAC) See Sheet No. 19# 20

Sta. 179+00 Construct Type III Inlet 19.5' Lt. & Install 1.5" x 54' CRP (MAC) See Sheet No. 19# 20



Tom C. Cain Et. Ux Tract

Sta. 157+00 Frontage Road Install 18" x 28" SRP. 2 End Sections 14' Lt. 14' Rt.

Note: The 138 KV Trans. Line, Rt. Sta. 350+00 to Sta. 194+83.80 Will be in Place During Construction and the Grading Contractor Will Work Around It.

Earl H. Kimmel NE 1/4 NW 1/4 E. N. of Canal
 Large Trees to be Grubbed Sta. 153+00 to Sta. 179+00 15'-40", 10'-50", 4'-60", 1'-70", 2'-80" Total 32. All Trees to be grubbed are marked thus @ Spare all trees not marked. Hedge to be Grubbed Sta. 155+36 - 41 Lin. Ft.

R/W + Sec. Line
 Sta. 171+88 110' Rt. Install 50' Steel Plate Guard Fence Terminal End Sections See Sheet No. 22

Sta. 178+46 140' Rt. Install 25' Steel Plate Guard Fence Terminal End Sections See Sheet No. 22

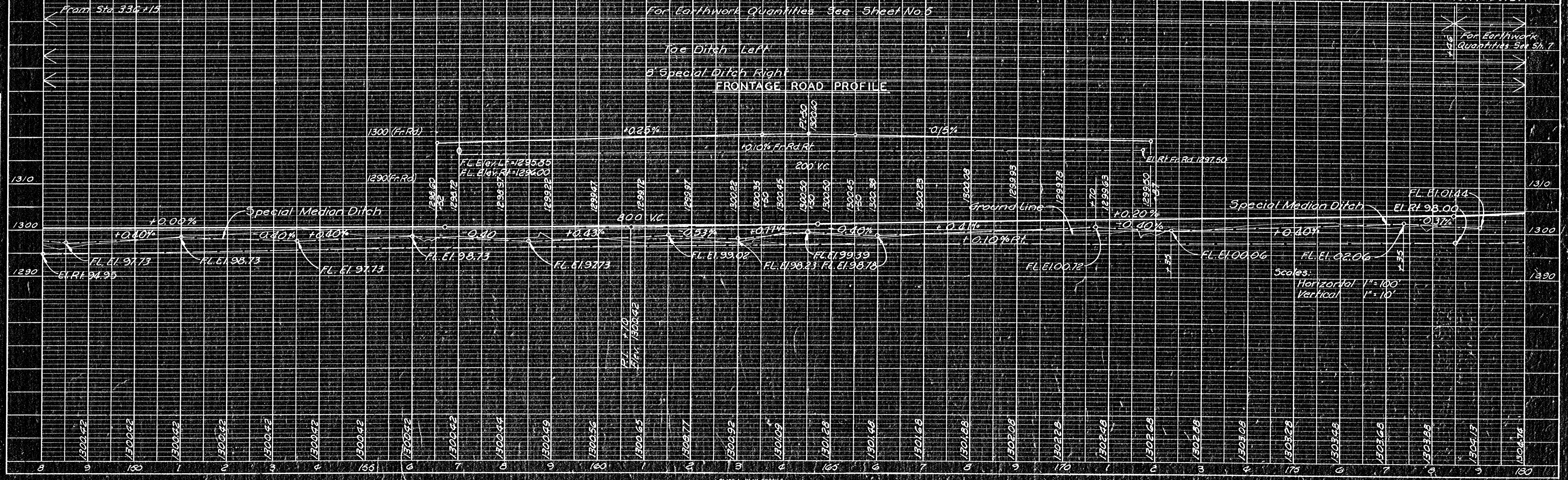
Clifford G. Jones Et. Ux Lots 3, 4 & 5 131st, 1st and 2nd Add. Connie Acres
 BM #119 RR. Spike in Power Pole 12' Lt. Sta. 171+60 Elev. 1300.27

BM #117 Top 55 Conc. R/W Marker 19' Lt. Sta. 145+54 Elev. 1296.39

BM #118 Top 5" x 5" Conc. R/W Marker 49' Lt. Sta. 158+71 Elev. 1299.19

NW 1/4 Sec 35 1275 R/W.

SW 1/4 Sec 28 1275 R/W



For Earthwork Quantities See Sheet No. 5

For Earthwork Quantities See Sh. 7

FRONTAGE ROAD PROFILE

Scales:
 Horizontal 1" = 100'
 Vertical 1" = 10'

PLAN

DATE	1/25/58
BY	W.C. HARRIS
CHECKED	W.C. HARRIS
APPROVED	W.C. HARRIS
NOTE BOOK	ALGUMENT CHECKED
NO.	11774

PROFILE

DATE	1/25/58
BY	W.C. HARRIS
CHECKED	W.C. HARRIS
APPROVED	W.C. HARRIS
NOTE BOOK	ALGUMENT CHECKED
NO.	11774