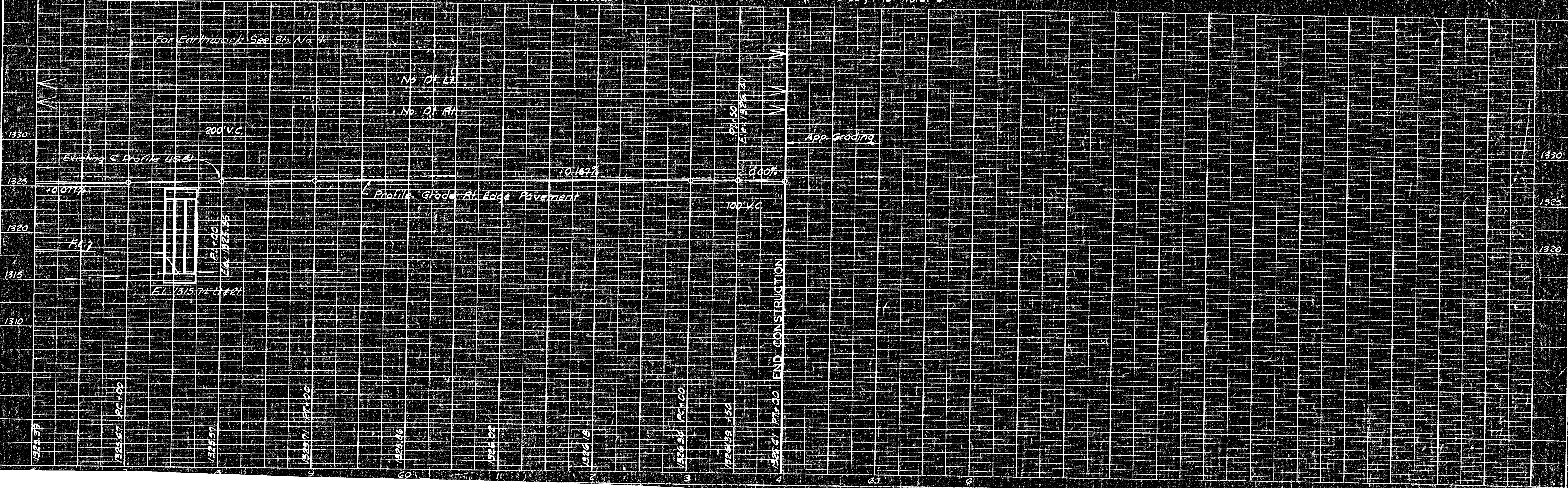
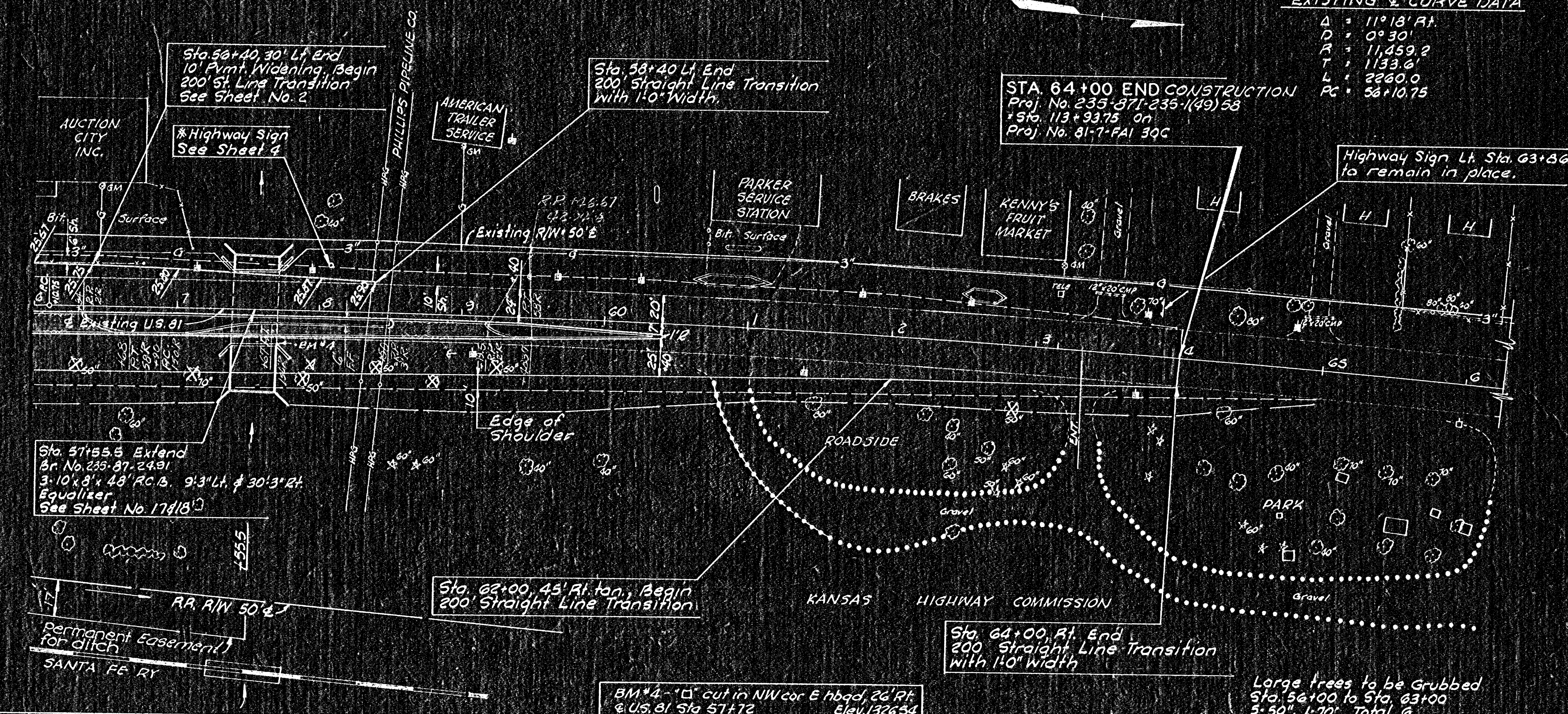


EXISTING & CURVE DATA

$\Delta = 11^{\circ}18'14''$
 $D = 0^{\circ}30'$
 $R = 11,459.2$
 $T = 1133.6$
 $L = 2260.0$
 $PC = 58+10.75$

STA 64+00 END CONSTRUCTION
 Proj. No. 235-271-235-1(49) 5B
 + Sta. 113+93.75 on
 Proj. No. 81-7-FA1 3QC



PLAN

DATE	BY
DESIGNED	BY
CHECKED	BY
APPROVED	BY
NO.	

PROFILE

DATE	BY
DESIGNED	BY
CHECKED	BY
APPROVED	BY
NO.	