

**GENERAL NOTES**

**ABUTMENT STRIP DRAIN:** The Contractor shall excavate to the limits shown on the Retaining Wall sheet, grade the bottom of the backfill area, place the strip drain, and place the perforated pipe, the outlet pipe, the CMP, and the backfill. Guide post and coarse aggregate are subsidiary to this bid item. Guide post and coarse aggregate are not required where the pipe empties into the RCB.

**BRIDGE BACKWALL PROTECTION SYSTEM:** Apply a Bridge Backwall Protective System to the earth side of the retaining wall in accordance with KDOT Specifications and the manufacturer's recommendations. Prior to backfilling, repair any damage done to the system at no charge.

Place perforated pipe next to the strip drain. Use non-perforated pipe outside the limits of the strip drain. Enclose the perforated pipe with the extension of the filter fabric.

Compact the abutment backfill. See the KDOT Specifications.

Perforated pipe and non-perforated outlet pipe shall be corrugated polyethylene tubing conforming to the KDOT Specifications.

Fit the CMP end section with 1/4" galvanized mesh screen to prevent the entrance of rodents. Seal the joint between the outlet pipe and the end section with a joint sealer. Place coarse aggregate at the outlet end as shown.

Grade the bottom surface of the excavated area to drain. Backfill this area with a cohesive type soil. The soil should be a silty clay or clay under the Kansas Classification System with a minimum plasticity index of 13. Compact the material to Type C standards.

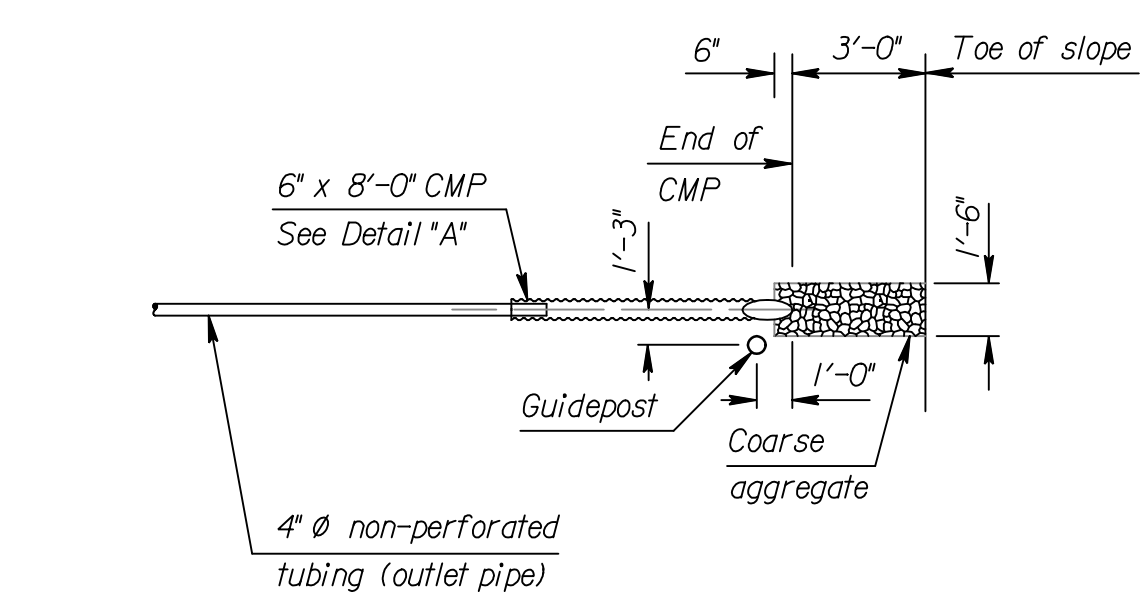


POINT NO.	REFERENCE	NORTHING	EASTING	STATION	OFFSET (FT.)	ELEVATION
45	Outfall at 6'x3' RCB	1,688,503.1379	1,627,826.3081	49+04.70	51.33 Lt.	1307.00
46	Vertical P.I.	1,688,503.3335	1,627,834.1066	49+12.50	51.33 Lt.	1308.50
47	Vertical P.I.	1,688,504.2737	1,627,871.5948	49+50.00	51.33 Lt.	1310.50
48	Vertical P.I.	1,688,508.0340	1,628,021.5277	51+00.00	51.33 Lt.	1311.25
49	Vertical & Horiz. P.I.	1,688,508.7867	1,628,051.5383	51+30.00	51.33 Lt.	1308.50
50	Begin 6" C.M.P.	1,688,530.7053	1,628,065.0850	51+44.09	72.91 Lt.	1307.35
51	Outfall/End of 6" C.M.P.	1,688,537.5105	1,628,069.2910	51+48.47	79.60 Lt.	1307.20
52	Outfall at 6'x3' RCB	1,688,400.6200	1,627,833.5227	49+09.34	51.33 Rt.	1306.95
53	Vertical P.I.	1,688,400.6992	1,627,836.6807	49+12.50	51.33 Rt.	1308.50
54	Vertical P.I.	1,688,401.6394	1,627,874.1689	49+50.00	51.33 Rt.	1310.50
55	Vertical P.I.	1,688,405.4002	1,628,024.1217	51+00.00	51.33 Rt.	1311.25
56	Vertical & Horiz. P.I.	1,688,406.1523	1,628,054.1123	51+30.00	51.33 Rt.	1308.50
57	Vertical & Horiz. P.I.	1,688,402.7774	1,628,073.7599	51+49.56	55.20 Rt.	1308.15
58	Begin 6" C.M.P.	1,688,394.6034	1,628,074.8586	51+50.45	63.40 Rt.	1308.00
59	Outfall/End 6" C.M.P.	1,688,386.6747	1,628,075.9244	51+51.32	71.35 Rt.	1307.80

ITEM	Lt.	Rt.	UNIT
Bridge Backwall Prot. Sys.	43.8	43.8	S.Y.
Abutment Strip Drain	37.5	37.5	S.Y.
* 4" Dia. Perforated Pipe	225.2	225.2	L.F.
* 4" Dia. Non-Perforated Pipe	34.7	32.7	L.F.
* 6" Dia. C.M.P.	8.0	8.0	L.F.
Guide Post	1	1	ea.

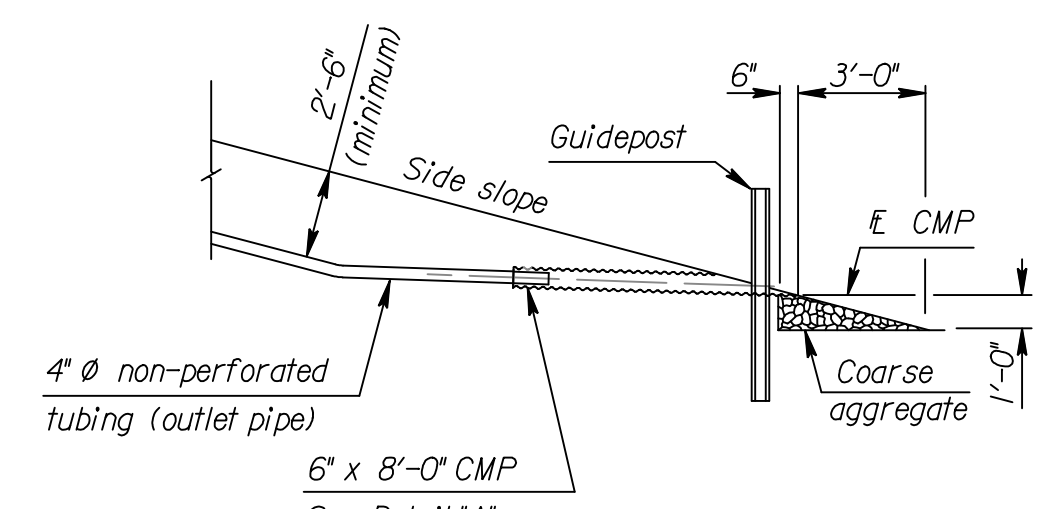
\* Subsidiary to "Abutment Strip Drain"

From	To	Length(Ft.)	Item
45	46	7.9	4" Dia. Non-perforated Pipe
46	47	37.6	4" Dia. Perforated Pipe
47	48	150.0	4" Dia. Perforated Pipe
48	49	37.6	4" Dia. Perforated Pipe
49	50	26.8	4" Dia. Perforated Pipe
50	51	8.0	6" Dia. C.M.P.
52	53	3.5	4" Dia. Non-perforated Pipe
53	54	37.6	4" Dia. Perforated Pipe
54	55	150.0	4" Dia. Perforated Pipe
55	56	37.6	4" Dia. Perforated Pipe
56	57	19.9	4" Dia. Non-perforated Pipe
57	58	9.3	4" Dia. Non-perforated Pipe
58	59	8.0	6" Dia. C.M.P.

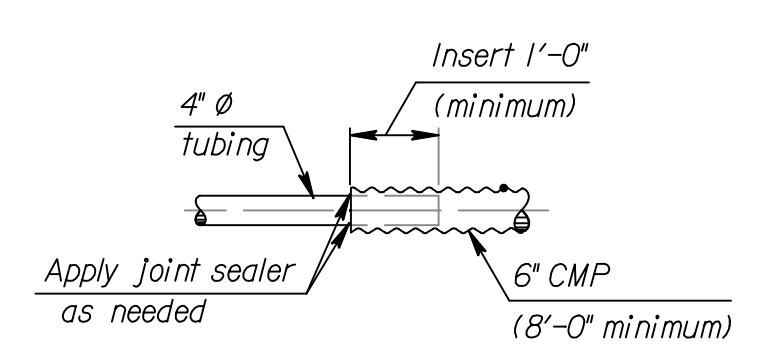


**OUTFALL PLAN**

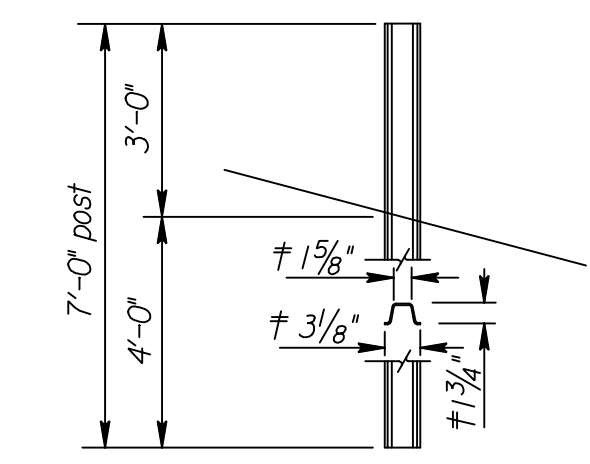
Note: Place the CMP flowline 1'-0" above ditch flowline, as depicted in the plan and table.



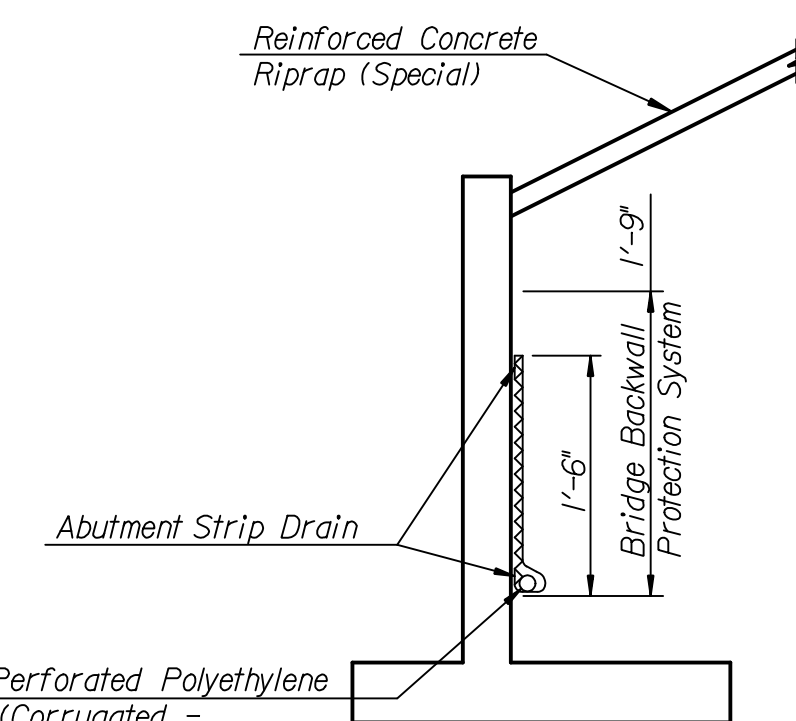
**OUTFALL ELEVATION**



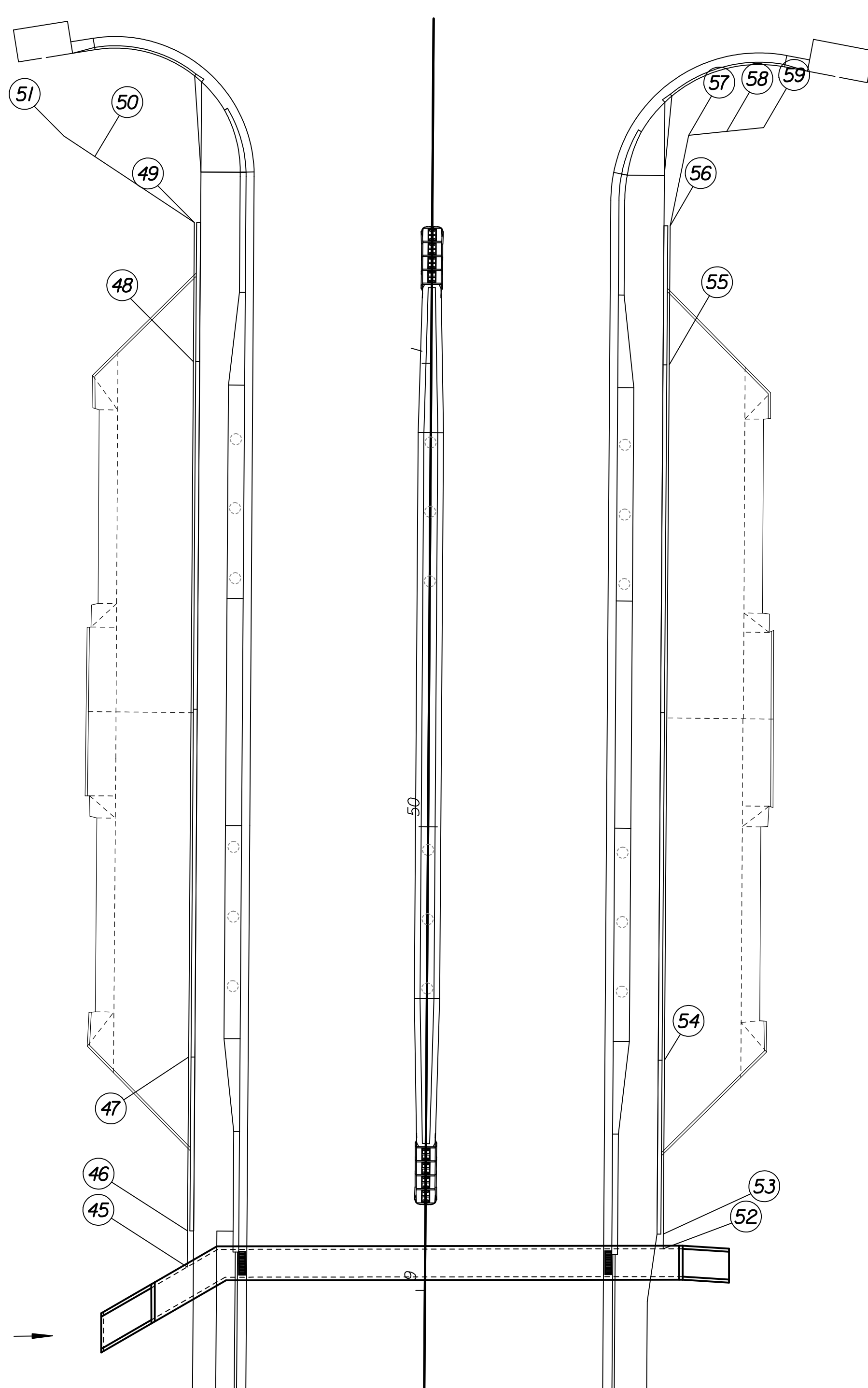
**DETAIL A**



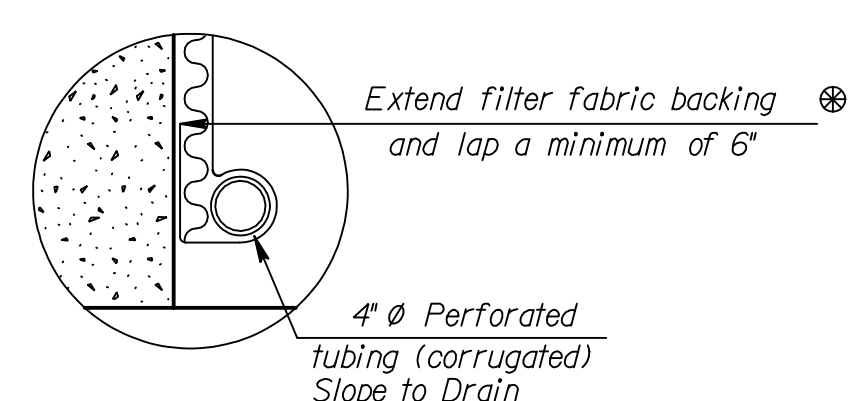
**DETAIL B**



**TYPICAL WALL SECTION**



**DEVELOPED ELEVATION**  
6' x 3' x 117' RCB



**DETAIL B**

**GUIDE POST**

Notes:  
Metal Guide Posts: Posts shall conform to the KDOT Specifications. Posts shall have a galvanized or baked enamel coating. Apply one coat of International Orange paint to the top 12" of the posts.

Modified from Kansas Department of Transportation Standard 104B

No.	Revision	By	Date
CENTRAL AVENUE			
<b>RETAINING WALL STRIP DRAIN DETAILS</b>			
JAMES L. ARMOUR, P.E.—CITY ENGINEER CITY OF WICHITA PROJECT NO. 472-84639			
<b>Professional Engineering Consultants, P.A.</b> 303 S. TOPEKA • WICHITA, KANSAS 67202 316-262-2691 • FAX 316-262-3003			
Designed by	RAS	Job No.	06655
Drawn by	DRP	Date	Jan. 2008
			Sht. 41 of 142

DSNR: RAS OPER: DRP SCALE: 12-14-2007 BY: RAS  
 I:/2006/06655/BRIDGE/RCB/06655-000-C-stripdrain.dgn LAST REV: 12-14-2007 BY: RAS