

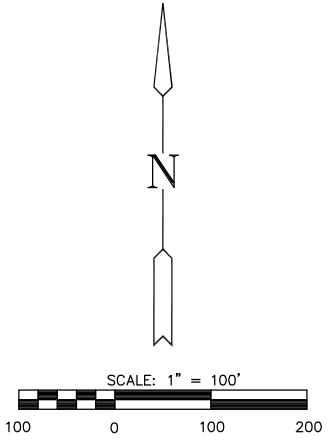
# FINAL PLAT

## REGENCY PARK ADDITION

### AN ADDITION TO WICHITA, SEDGWICK COUNTY, KANSAS

NW COR., NE 1/4  
SEC 4, T27S, R2E

N00°32'56"W 1268.04'  
EAST LINE OF S. 1/2 SE. QUARTER  
SECTION 13, T26 S. R2E



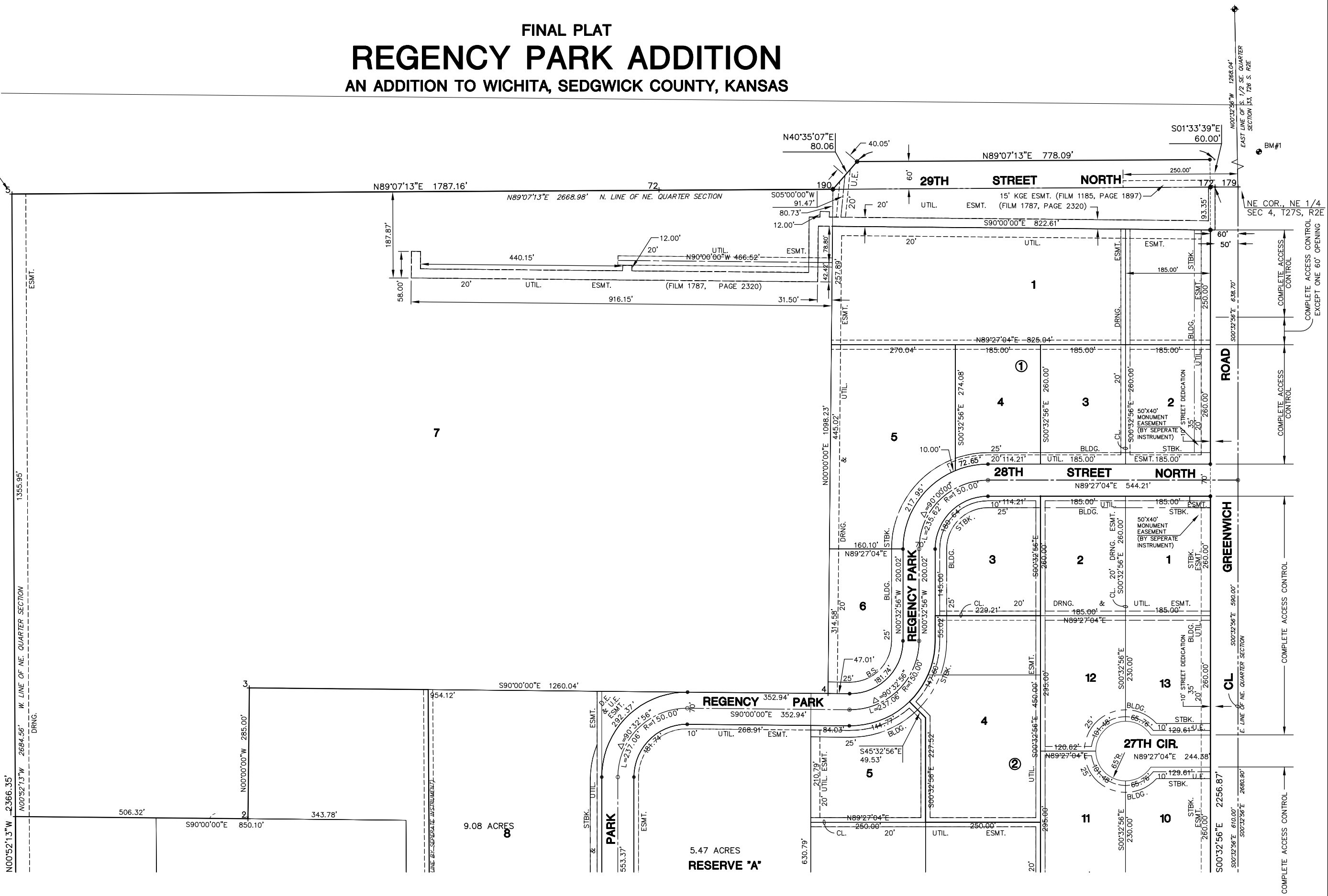
#### LEGEND

- = I.P.
- B.S. = BUILDING SETBACK
- U.E. = UTILITY EASEMENT
- ▨ = 10' STREET DEDICATION

MINIMUM PAD ELEVATIONS (LOWEST OPENINGS)			
LOT	BLOCK	ELEVATION (CITY DATUM)	ELEVATION (USGS)
9	1	190.3	1377.7
10	1	188.8	1376.2
11	1	187.3	1374.7
5	2	192.1	1379.5
6	2	192.1	1379.5

#### BENCHMARKS

- BM#1 STEP SPIKE IN WEST SIDE PP,  
1st. POLE NORTH OF 29th. ST.  
ON EAST SIDE GREENWICH RD.  
ELEV. = 201.51
- BM#2 STEP SPIKE IN WEST SIDE PP,  
6th. POLE NORTH OF K-96 ON  
EAST SIDE GREENWICH RD.  
ELEV. = 192.04
- BM#3 STEP SPIKE IN WEST SIDE PP,  
1st. POLE NORTH OF K-96 ON  
EAST SIDE GREENWICH RD.  
ELEV. = 184.45



9.08 ACRES

5.47 ACRES  
**RESERVE 'A'**

COMPLETE ACCESS CONTROL EXCEPT ONE 60' OPENING

COMPLETE ACCESS CONTROL

COMPLETE ACCESS CONTROL

COMPLETE ACCESS CONTROL

COMPLETE ACCESS CONTROL