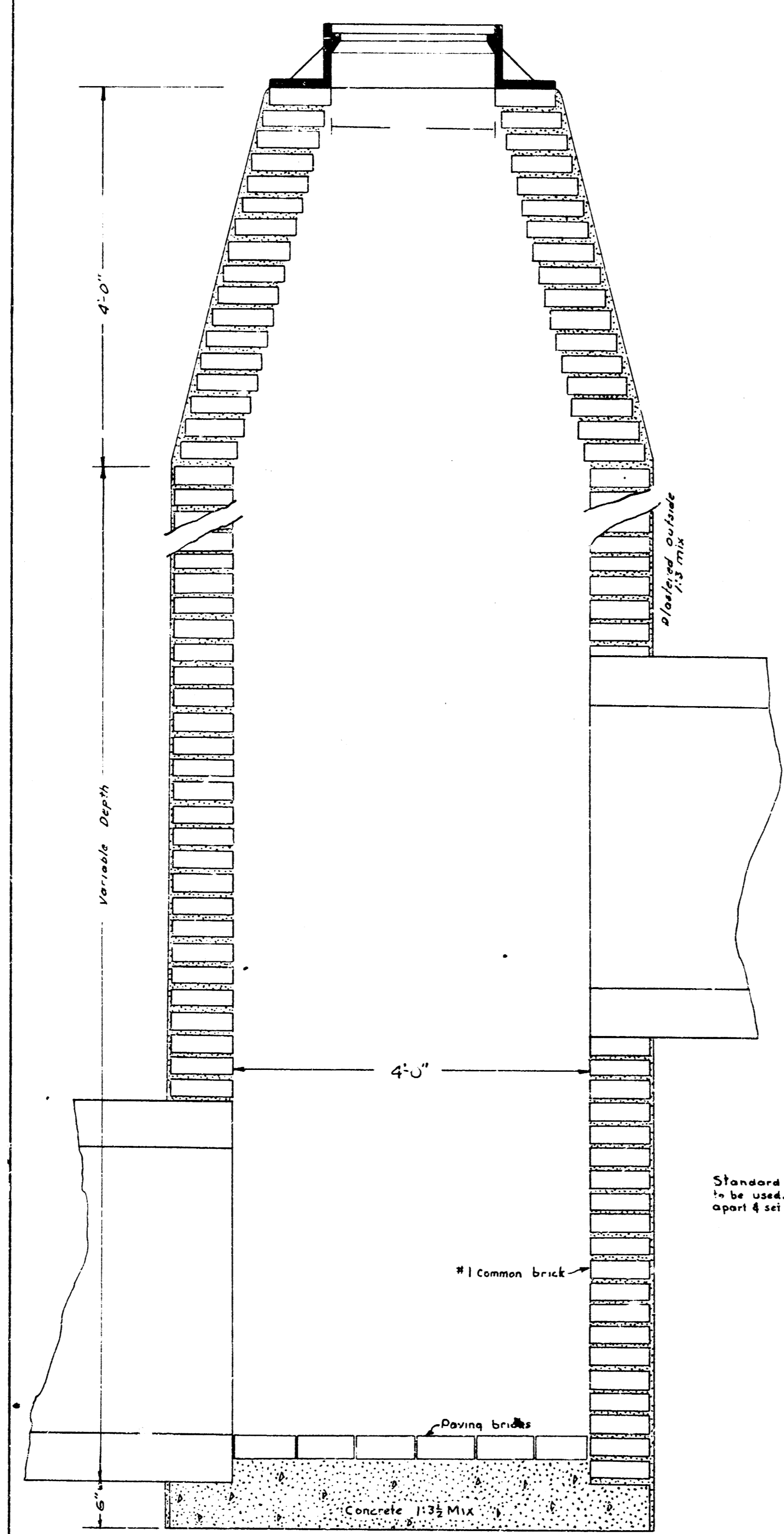
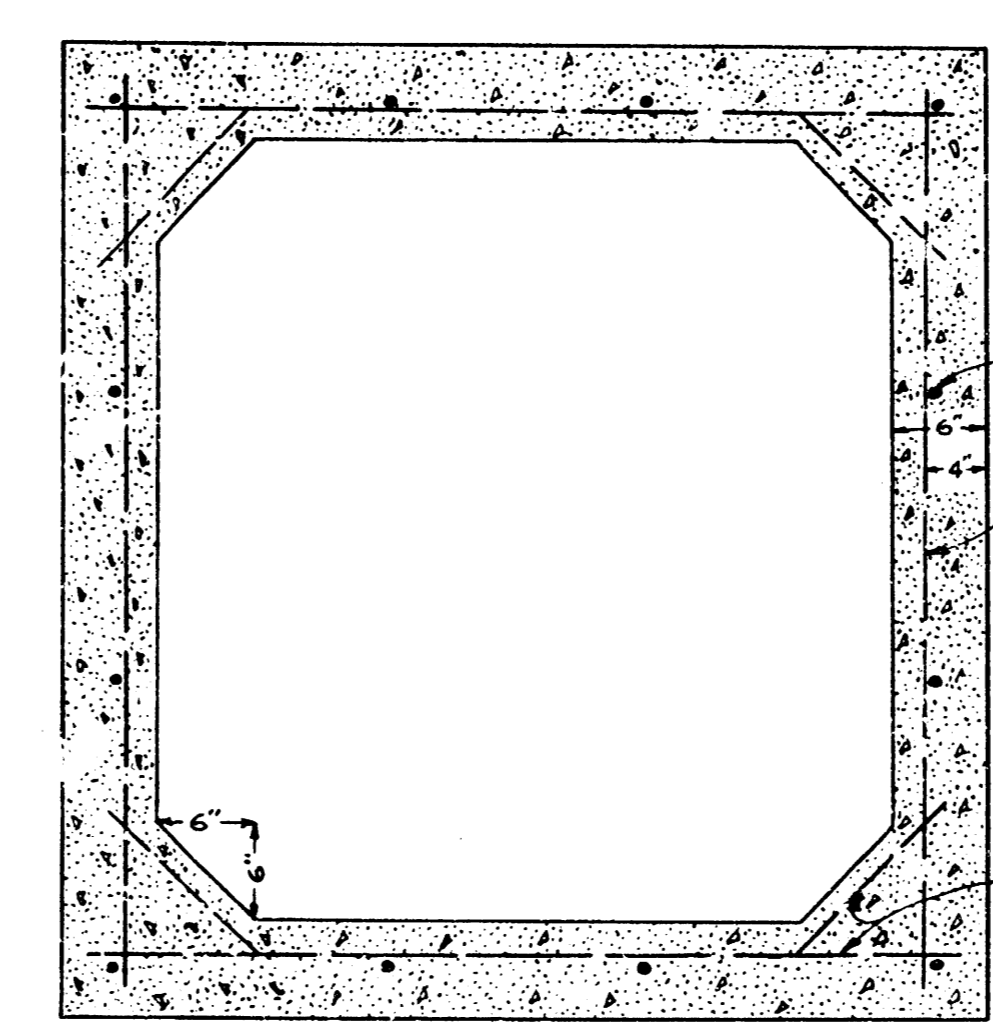


INDUSTRIAL SEWER ALONG WEST BANK OF DRAINAGE CANAL
 FROM 21ST ST. TO SEWAGE DISPOSAL PLANT.
 DETAILS OF CONSTRUCTION.
 SCALE - 1"=10'



CROSS-SECTION OF
 STANDARD BRICK DROP MANHOLE

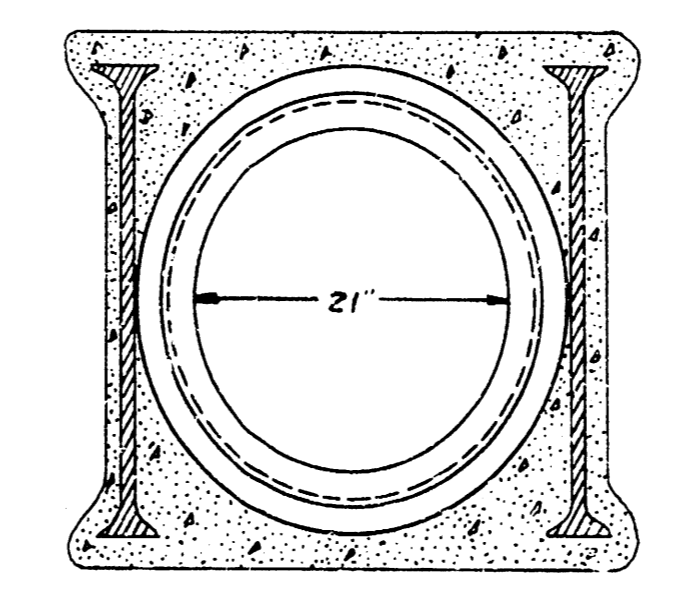


Longitudinal bars 1/2" spaced
 as shown on both horizontal
 and vertical walls.

Vertical transverse bars
 3/8" bar spaced 18" C-C 1' 0"
 4/8" bar - 9" C-C 1' 0"
 4/8" bar - 9" C-C 1' 0"
 3/8" bar - 9" C-C 1' 0"

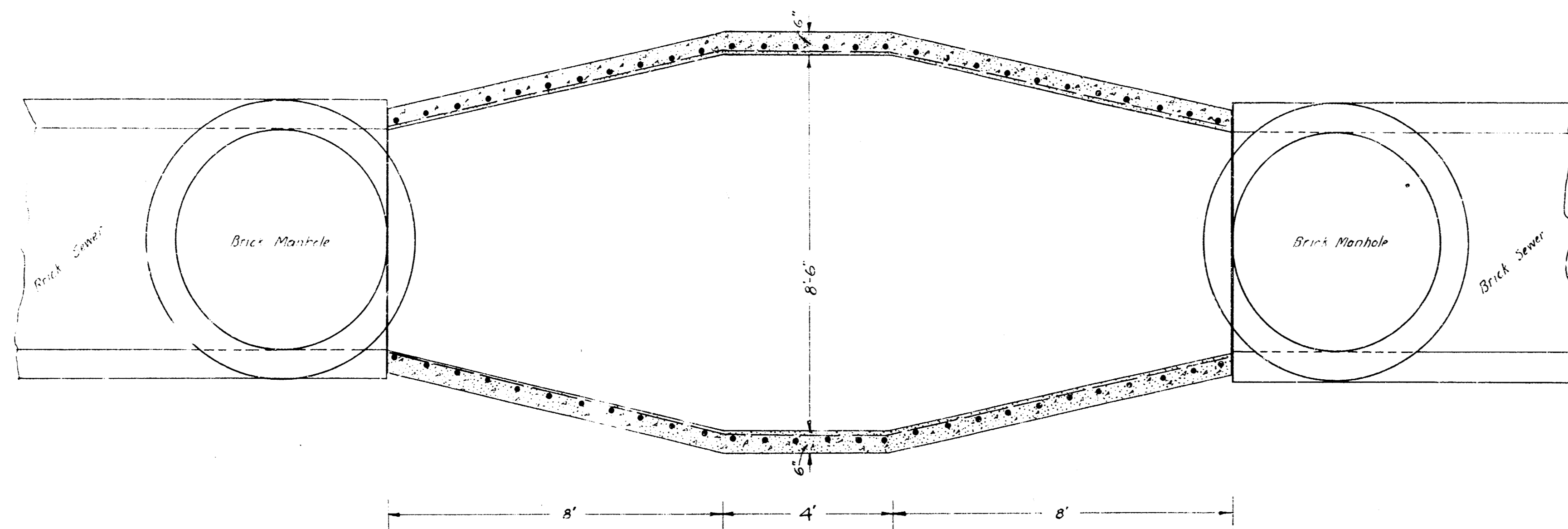
Horizontal transverse bars
 Alternate bars bent @ 45°
 in 12" angle from vertical bars.
 3/8" bar spaced 18" C-C 1' 0"
 4/8" - - - 9" C-C 1' 0"
 4/8" - - - 9" C-C 1' 0"
 3/8" - - - 9" C-C 1' 0"

TYPICAL CROSS-SECTION OF
 REINF-CONCRETE BOX SEWER
 FOR STORM WATER OUTLETS.



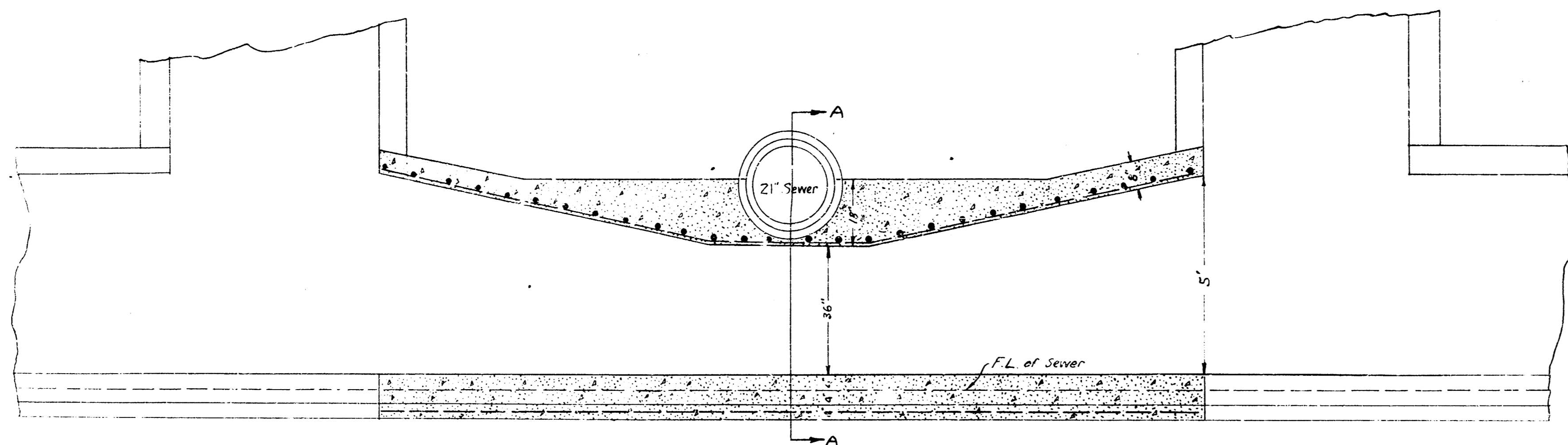
TYPICAL CROSS SECTION OF
 CREEK CROSSING TO BE 30'
 LONG-45' CLEAR SPAN.

ENGINEERING DEPARTMENT
 CITY OF WICHITA, KANSAS
 R.L. BROCKWAY CITY ENGR.
 DEC. 1915

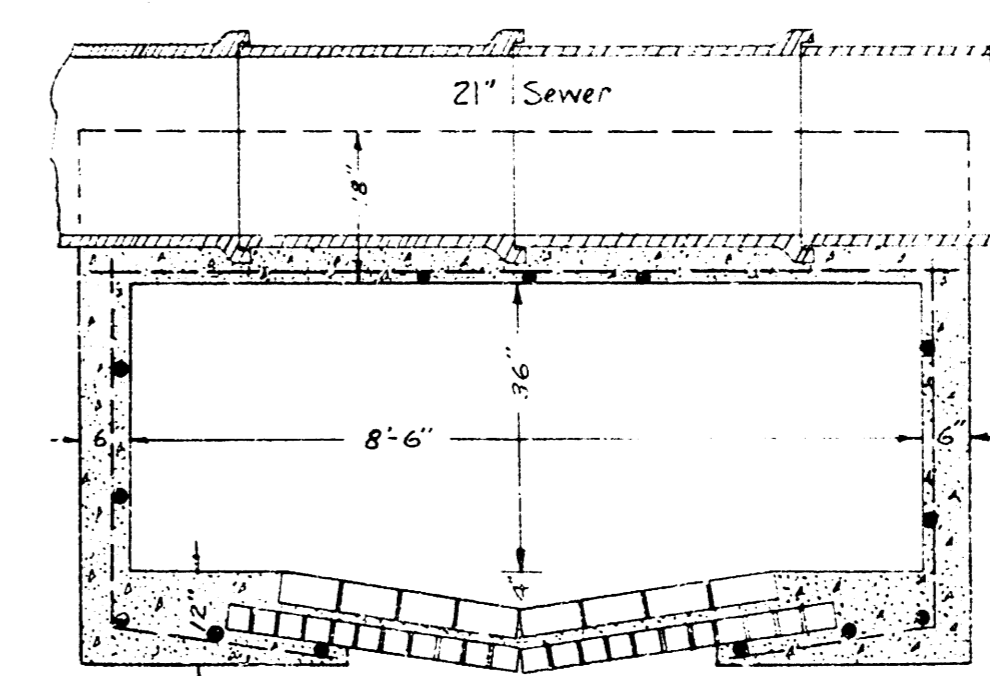


PLAN

Note: Steel is $\frac{1}{4}$ " spaced 9" c-c



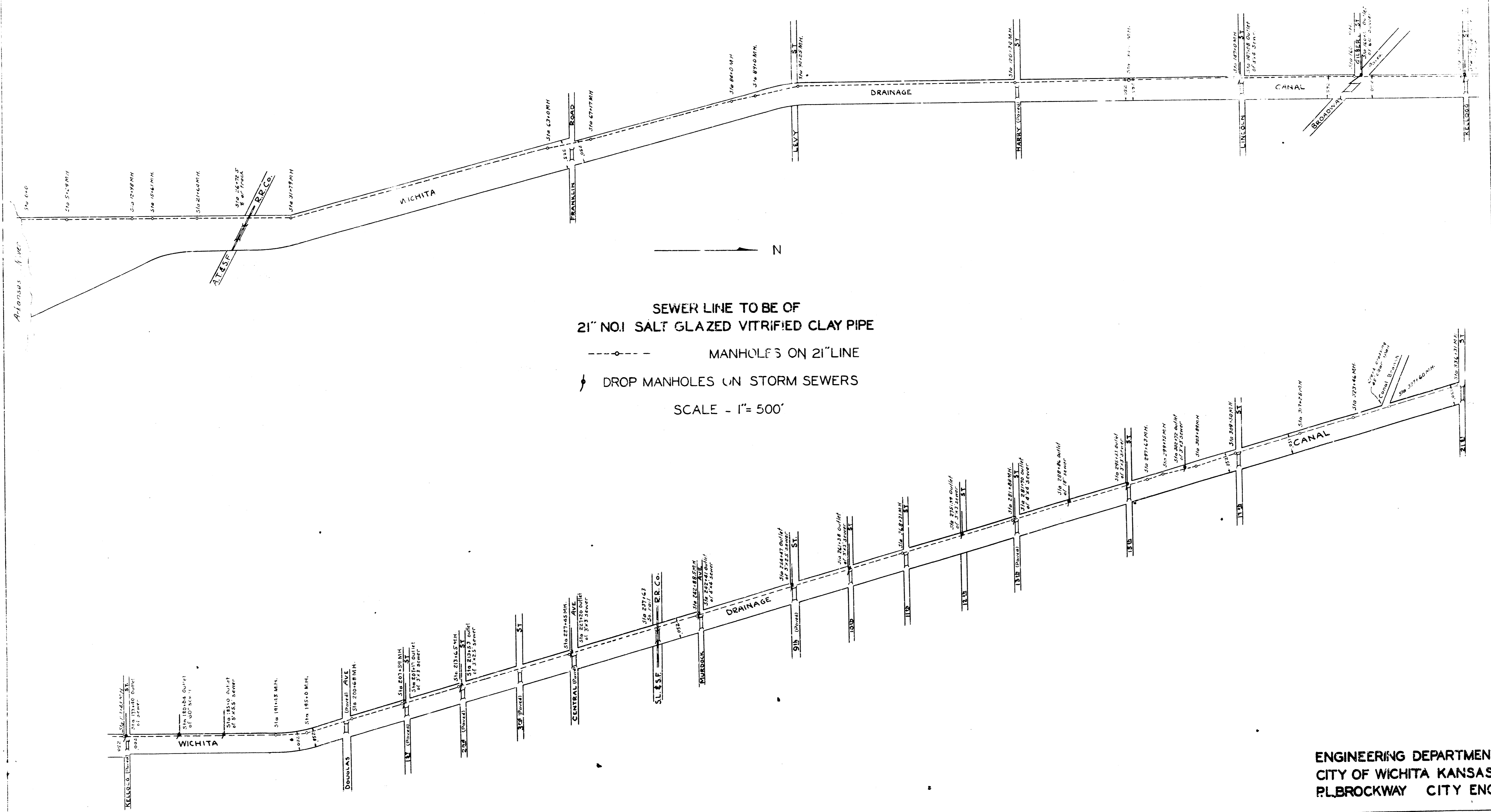
ELEVATION



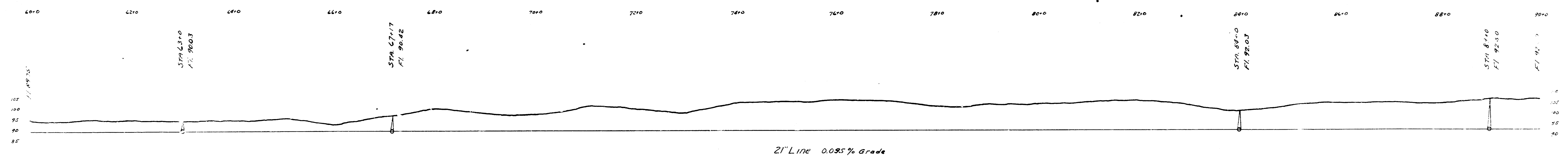
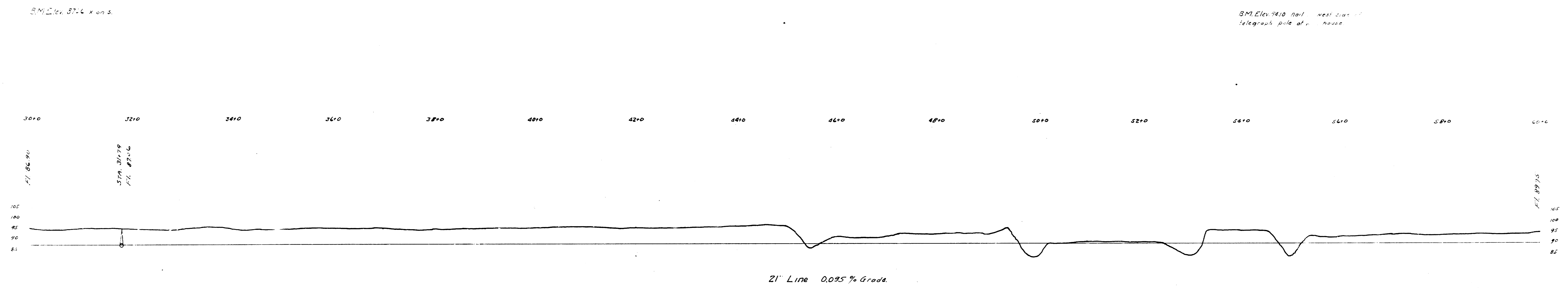
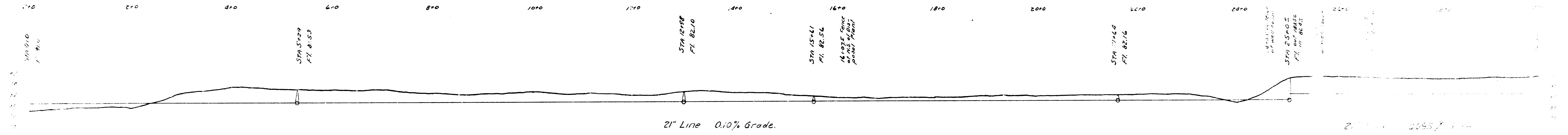
SECTION A-A

JUNCTION OF LEWIS ST. STORM
SEWER & 21" INDUSTRIAL SEWER
SHOWING DEPRESSED STORM SEWER
ENGINEERING DEPARTMENT
CITY OF WICHITA KANSAS
P.L. BROCKWAY CITY ENGINEER
SCALE $\frac{1}{4}$ " = 1'-0" FEB. 1933

PLAN OF THE INDUSTRIAL SEWER ALONG THE WEST SIDE OF DRAINAGE CANAL FROM 21ST ST. TO SEWAGE DISPOSAL PLANT



ENGINEERING DEPARTMENT
CITY OF WICHITA KANSAS
P.L. BROCKWAY CITY ENG.



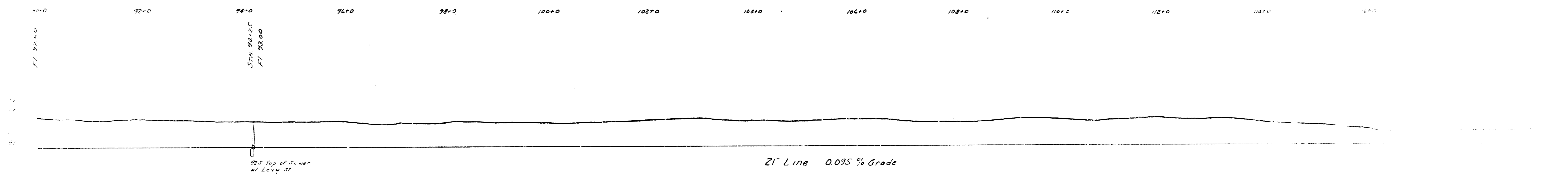
INDUSTRIAL SEWER ALONG WEST SIDE OF DRAINAGE CANAL

FROM 21ST ST TO SEWAGE DISPOSAL PLANT.

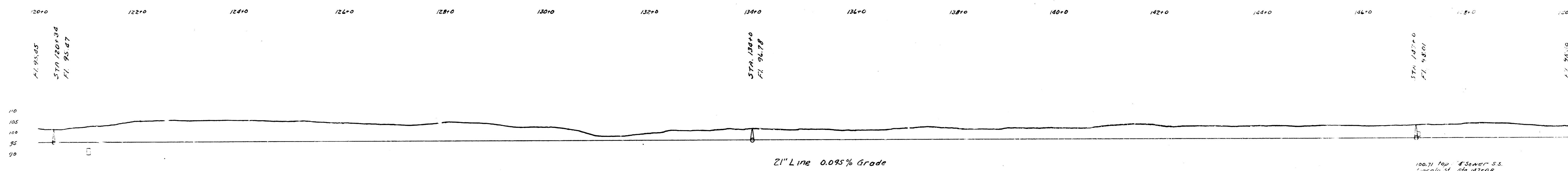
CITY ENGINEERING DEPARTMENT WICHITA, KANSAS.
PLBROCKWAY CITY ENGINEER.

B.M. Elev. 98.02 nail in 6" black phone pole of S.W. cor. of Franklin Bridge.

B.M. 1066. Corners man. on side of Ho. Tell & Drain canal Div.

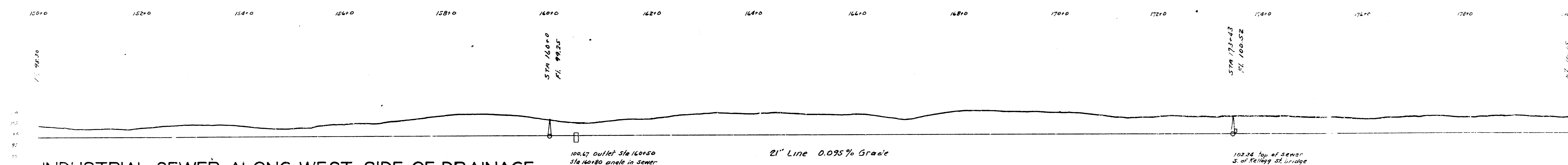


B.M. Elev. 92.50 on top of
outlet structure on sewer
in Levy St.



B.M. Elev. 122.37 on S.E. end of c&g. ref.
S.S. Harry & W.S. Canal

B.M. Elev. 105.74 Top of cement man.
W.S. Lincoln & W.S. of 18' divided strip



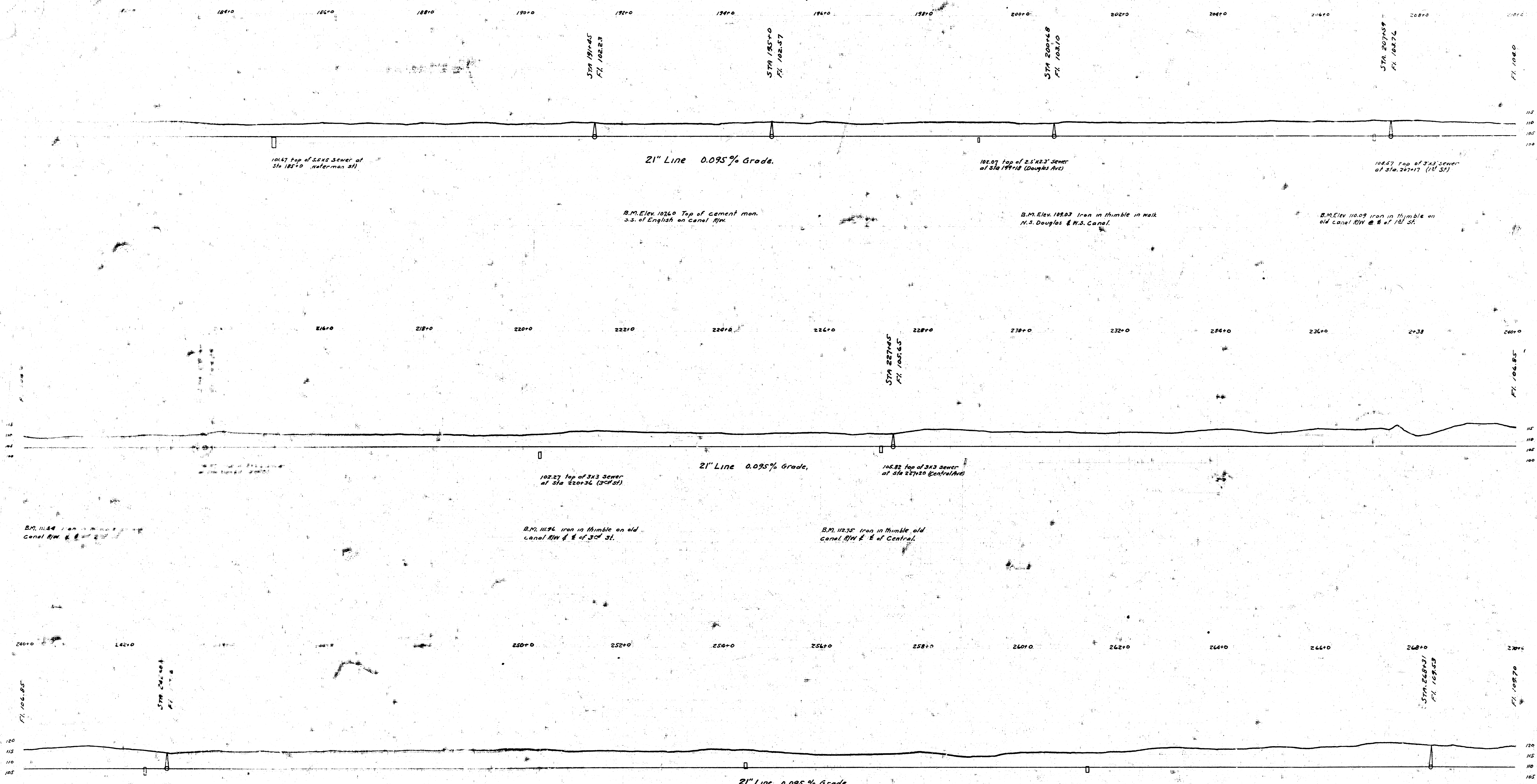
B.M. Elev. 107.18 Iron in thimble on
old canal NW & E of Broadway

B.M. Elev. 103.78 Top of cement man.
W.S. Canal & S.S. Kelly St.

**INDUSTRIAL SEWER ALONG WEST SIDE OF DRAINAGE
CANAL FROM 21ST ST TO SEWAGE DISPOSAL PLANT.**

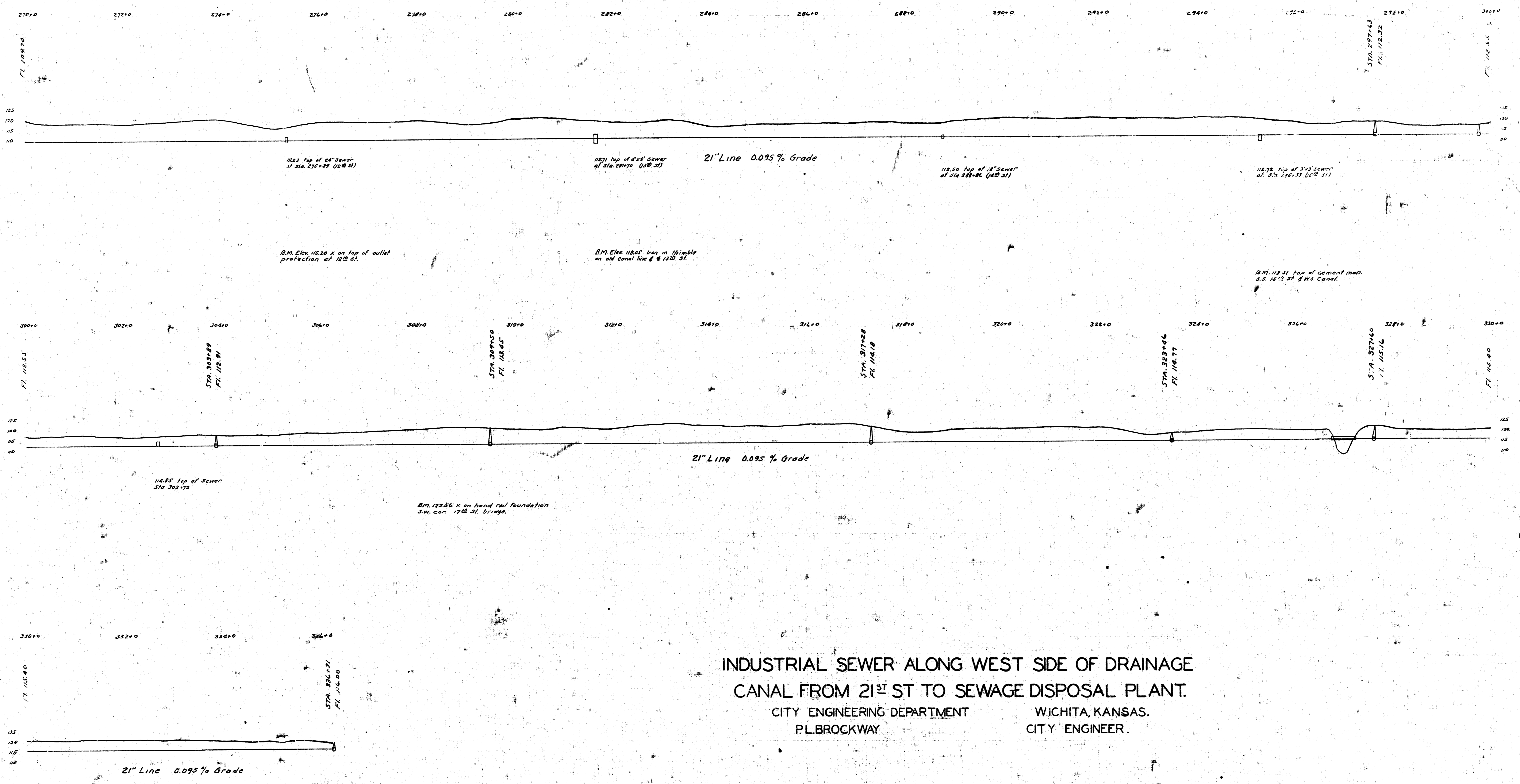
CITY ENGINEERING DEPARTMENT
P.L. BROCKWAY

WICHITA, KANSAS.
CITY ENGINEER.



INDUSTRIAL SEWER ALONG WEST SIDE OF DRAINAGE CANAL FROM 21ST ST TO SEWAGE DISPOSAL PLANT.
 CITY ENGINEERING DEPARTMENT
 PLUMBING
 WICHITA, KANSAS.
 CITY ENGINEER.

104.45 Top of 6"x6" Sewer of Sta. 1850
 102.57 Top of 2.5'x2.5' Sewer of Sta. 1945
 102.57 Top of 3'x3' Sewer of Sta. 2075
 102.57 Top of 3'x3' Sewer of Sta. 2140
 102.57 Top of 3'x3' Sewer of Sta. 2275
 102.57 Top of 3'x3' Sewer of Sta. 2600
 102.57 Top of 3'x3' Sewer of Sta. 2680



INDUSTRIAL SEWER ALONG WEST SIDE OF DRAINAGE
CANAL FROM 21ST ST TO SEWAGE DISPOSAL PLANT.
CITY ENGINEERING DEPARTMENT WICHITA, KANSAS.
P.L. BROCKWAY CITY ENGINEER.