

SANITARY SEWER FORCE MAIN  
&  
PUMPING STATION

SERVING  
LEISURE LIVING, FIRST ADDITION  
WICHITA, KANSAS

MOHRING & ASSOCIATES  
CONSULTING ENGINEERS

WICHITA

1972

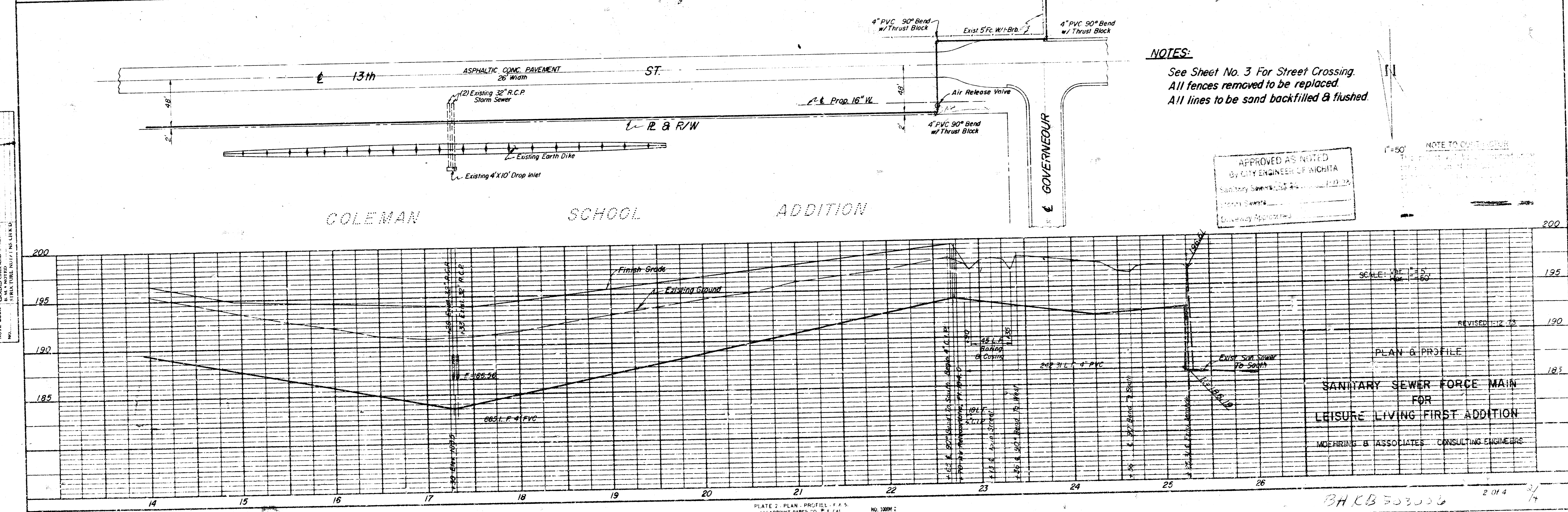
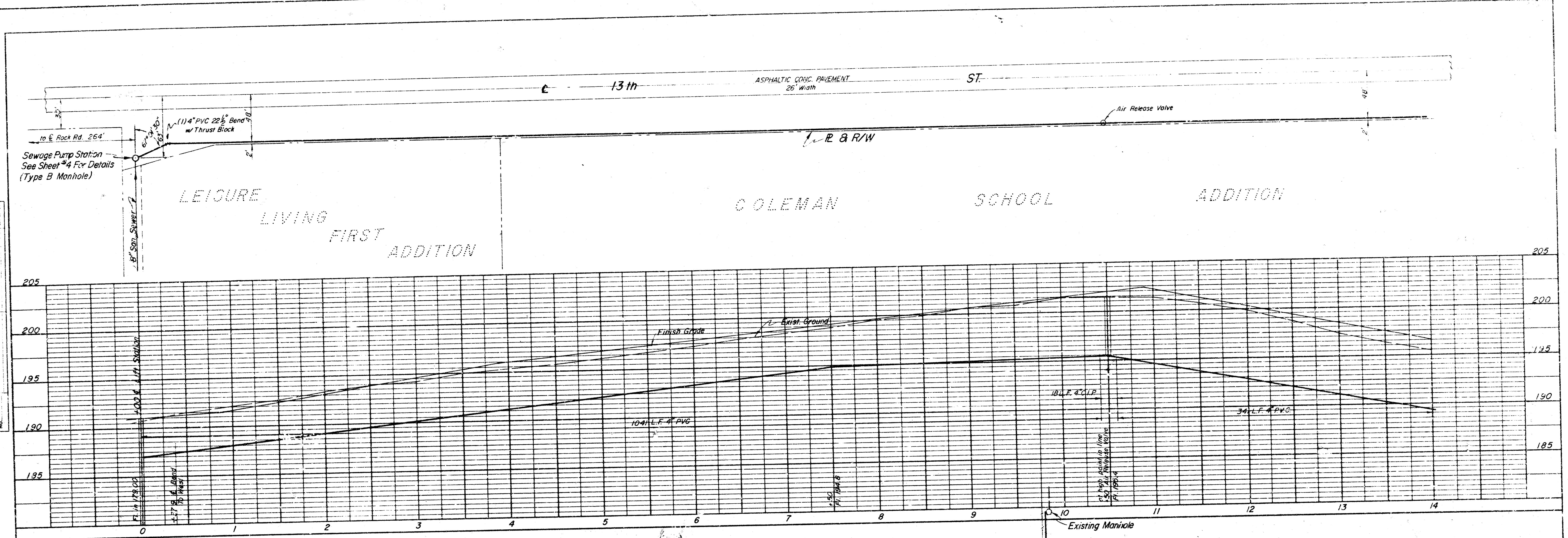


INDEX

<u>SHEET NO.</u>	<u>DESCRIPTION</u>
2	PLAN & PROFILE
3	STREET CROSSING & MISC. DETAILS
4	SEWAGE PUMPING STATION

DATE: \_\_\_\_\_ BY: \_\_\_\_\_  
 PLAN  
 SHOWS THE LOCATION OF THE SANITARY SEWER FORCE MAIN AND THE PROPOSED 18" L.F. 4" PVC MAIN LINE.  
 NOTE: SEE SHEET NO. 3 FOR STREET CROSSING DETAILS.  
 ALL LINES TO BE SAND BACKFILLED & FLUSHED.

DATE: \_\_\_\_\_ BY: \_\_\_\_\_  
 PROFILE  
 SHOWS THE ELEVATION OF THE SANITARY SEWER FORCE MAIN AND THE PROPOSED 18" L.F. 4" PVC MAIN LINE.  
 NOTE: SEE SHEET NO. 3 FOR STREET CROSSING DETAILS.  
 ALL LINES TO BE SAND BACKFILLED & FLUSHED.

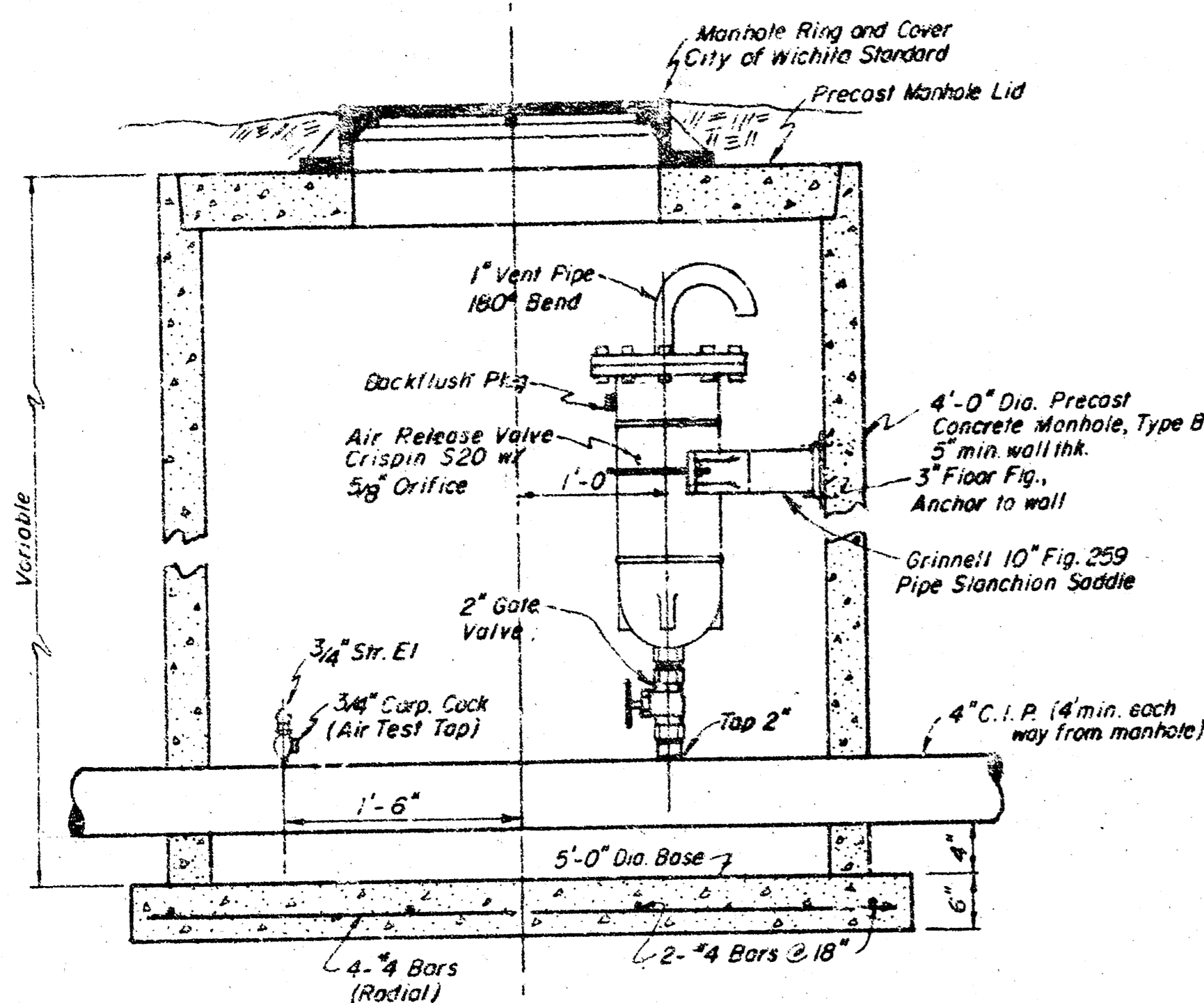


**NOTES:**  
 See Sheet No. 3 For Street Crossing.  
 All fences removed to be replaced.  
 All lines to be sand backfilled & flushed.

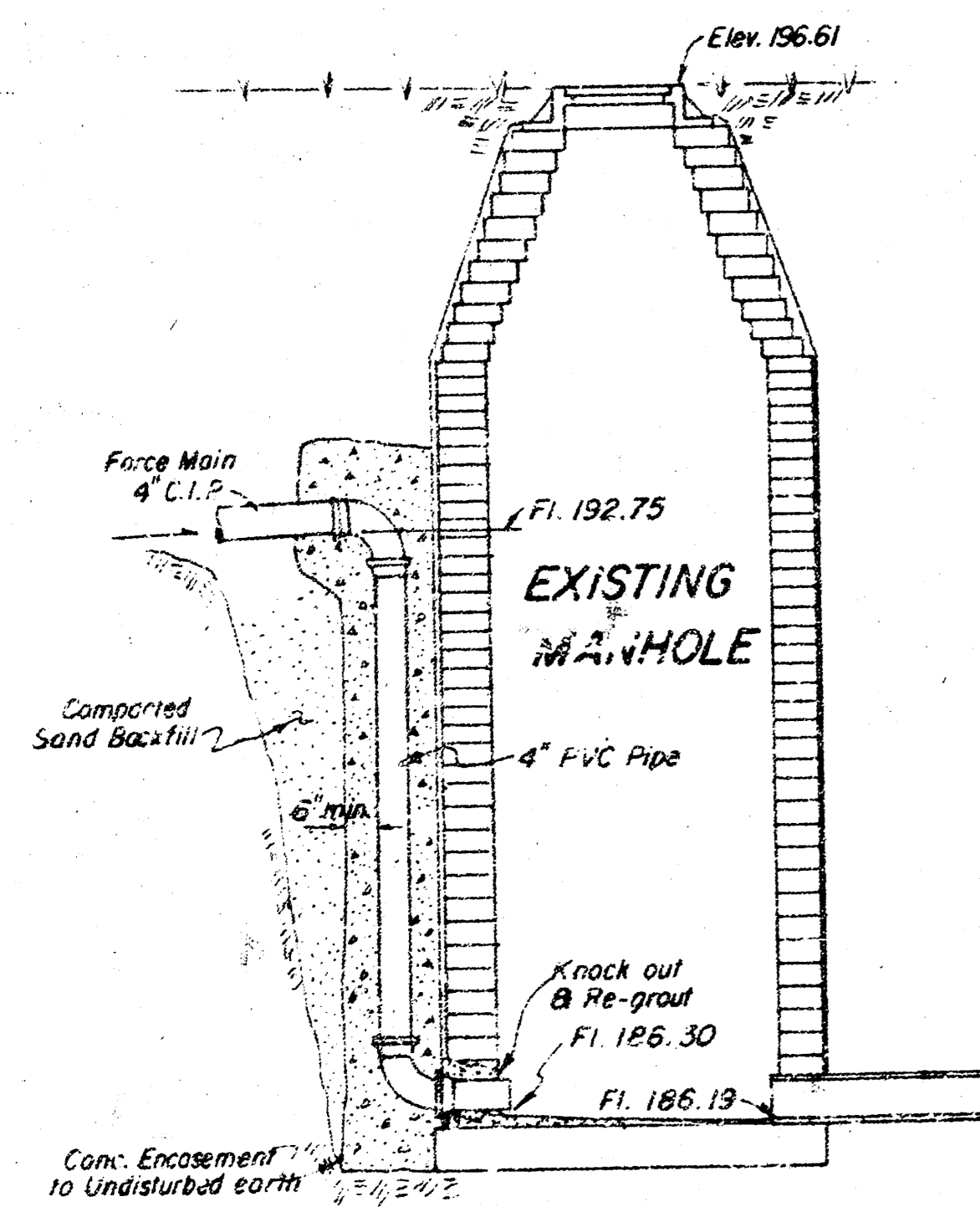
APPROVED AS NOTED  
 BY CITY ENGINEER OF WICHITA  
 Sanitary Sewer 11/12/23  
 M. S. S. S.  
 Citywide Approving

NOTE TO CONTRACTOR  
 ALL LINES TO BE SAND BACKFILLED & FLUSHED.

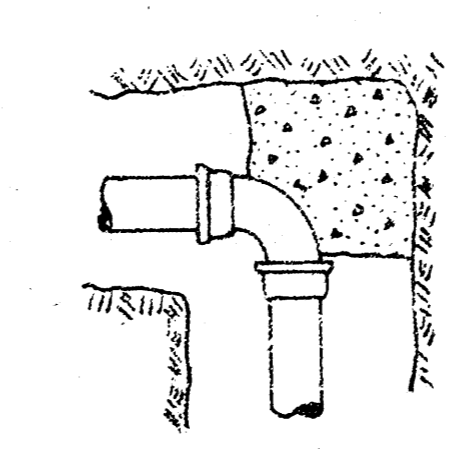
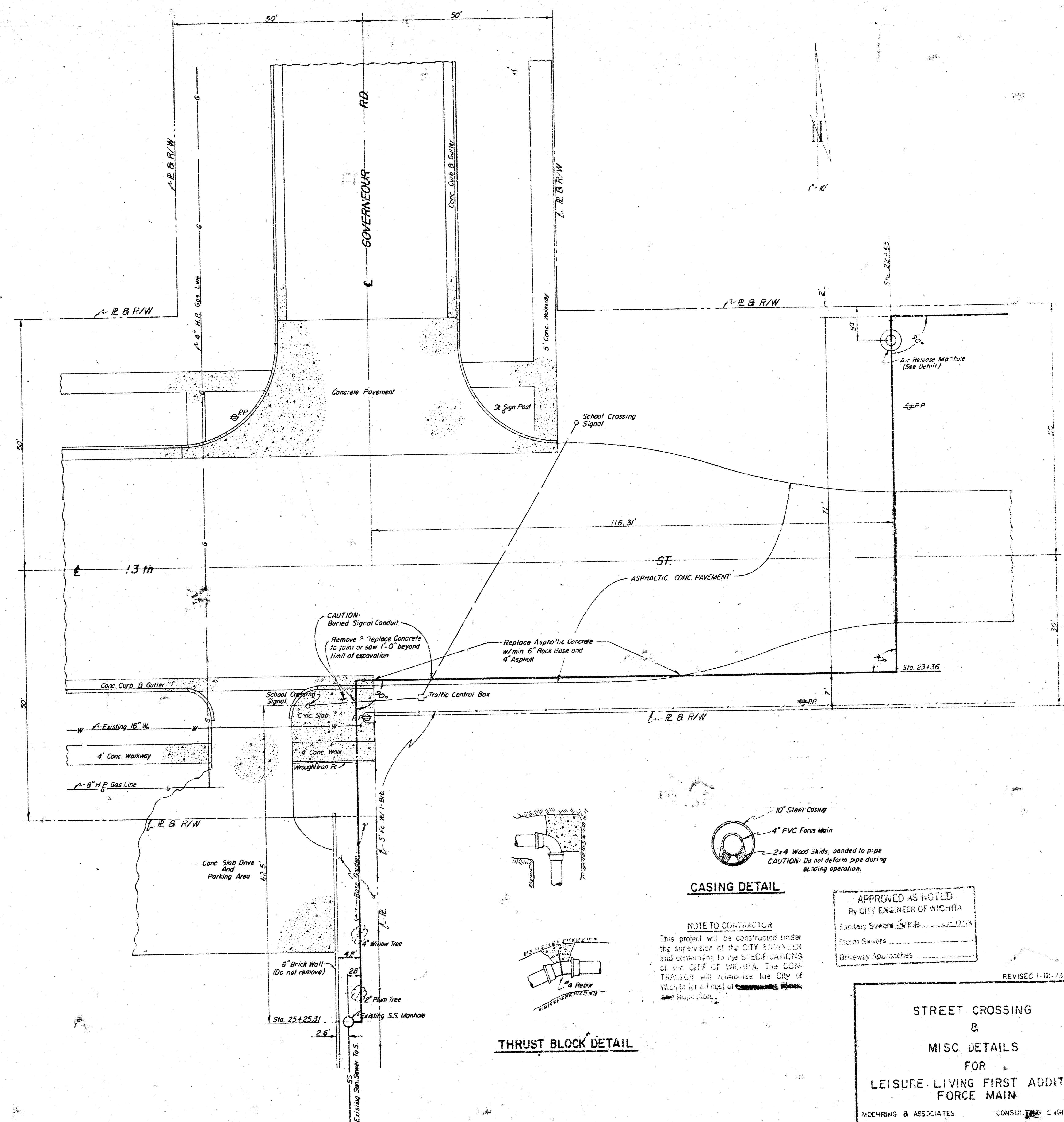
SCALE: VERT. 1" = 5'  
 HORIZ. 1" = 20'  
 REVISIONS: 11/12/23  
 PLAN & PROFILE  
 SANITARY SEWER FORCE MAIN  
 FOR  
 LEISURE LIVING FIRST ADDITION  
 MOHRING & ASSOCIATES CONSULTING ENGINEERS



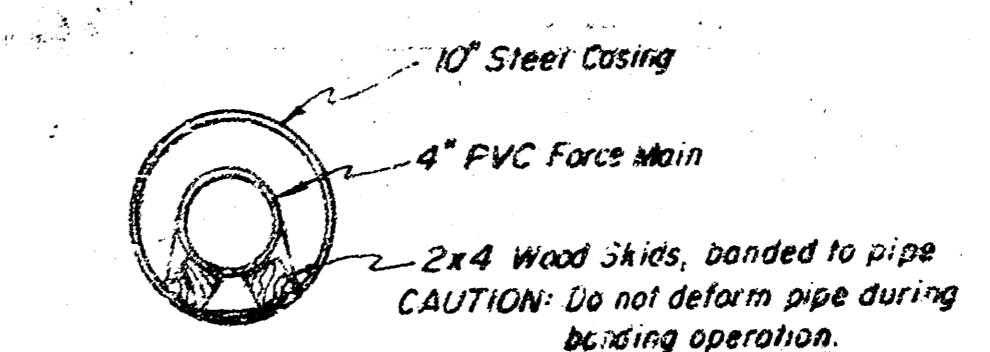
**AIR RELEASE VALVE MANHOLE**  
2 REQ'D.



**OUTSIDE DROP DETAIL**  
AT EXISTING MANHOLE



**THRUST BLOCK DETAIL**



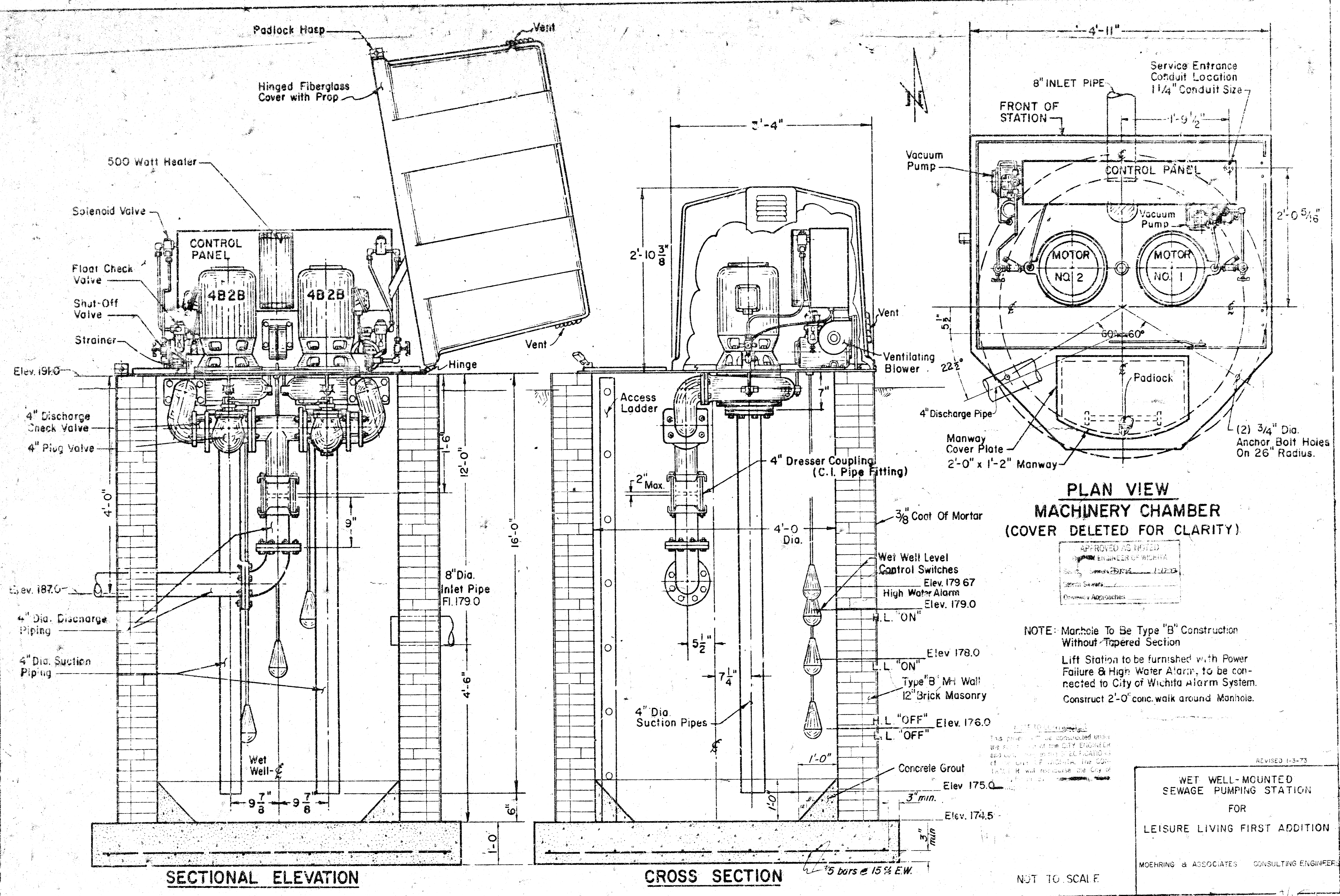
**CASING DETAIL**

**NOTE TO CONTRACTOR**  
This project will be constructed under the supervision of the CITY ENGINEER and conforming to the SPECIFICATIONS of the CITY OF WICHITA. The CONTRACTOR will reimburse the City of Wichita for all cost of ~~inspection, etc.~~

APPROVED AS NOTED  
BY CITY ENGINEER OF WICHITA  
Sanitary Sewers \_\_\_\_\_  
Storm Sewers \_\_\_\_\_  
Driveway Approaches \_\_\_\_\_

REVISED 1-12-73

**STREET CROSSING & MISC. DETAILS FOR LEISURE-LIVING FIRST ADDITION FORCE MAIN**  
MOENRING & ASSOCIATES CONSULTING ENGINEERS



**PLAN VIEW  
MACHINERY CHAMBER  
(COVER DELETED FOR CLARITY)**

APPROVED AND NOTED  
 ENGINEER OF WICHITA  
 DATE: 1/17/73  
 SPECIAL SWARS  
 DRAWING APPROACHES

NOTE: Manhole To Be Type "B" Construction Without Tapered Section  
 Lift Station to be furnished with Power Failure & High Water Alarm, to be connected to City of Wichita Alarm System.  
 Construct 2'-0" conc. walk around Manhole.

THIS DRAWING IS TO BE CONSIDERED VALID ONLY WHEN USED IN ACCORDANCE WITH THE CITY ENGINEER'S APPROVAL. ANY CHANGES TO THIS DRAWING WITHOUT THE CITY ENGINEER'S APPROVAL WILL BE AT THE USER'S RISK.

REVISED 1-3-73  
**WET WELL-MOUNTED  
SEWAGE PUMPING STATION  
FOR  
LEISURE LIVING FIRST ADDITION**  
 MOHRING & ASSOCIATES CONSULTING ENGINEERS

NOT TO SCALE