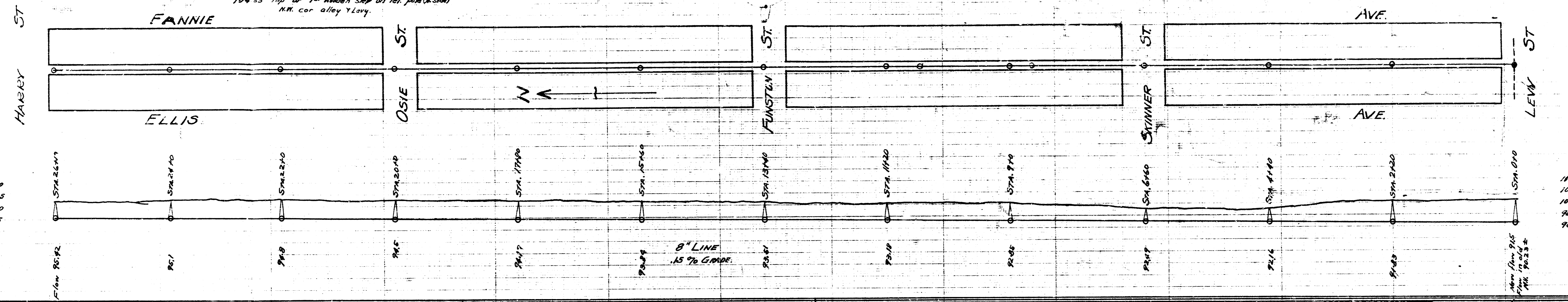


LAT. 6, DIST. C
S.S. No. 20

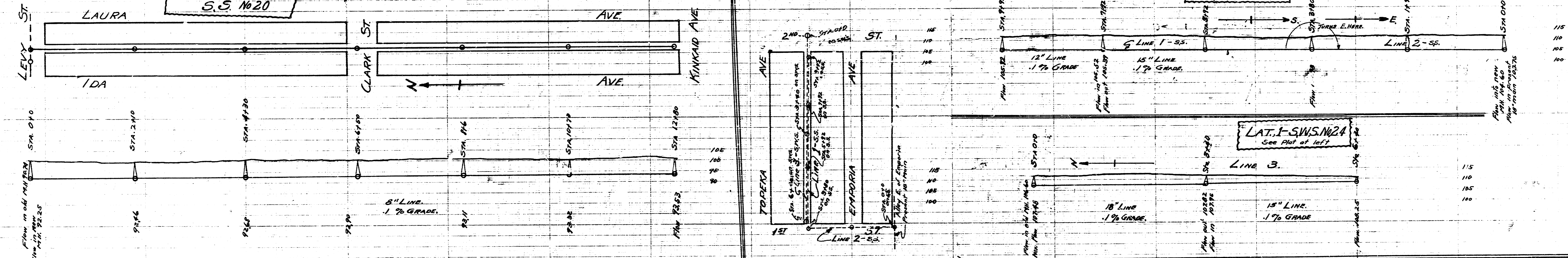
B.M. 10183 "K" in Kessler bk. of walk SE cor. Fannie & Harry
104 53 Top of 1st wooden step on left side (N side)
N.W. cor. alley & Levy.



LAT. 7, DIST. C
S.S. No. 20

B.M. 1004 X on back of walk
NE cor. Ida & Levy.

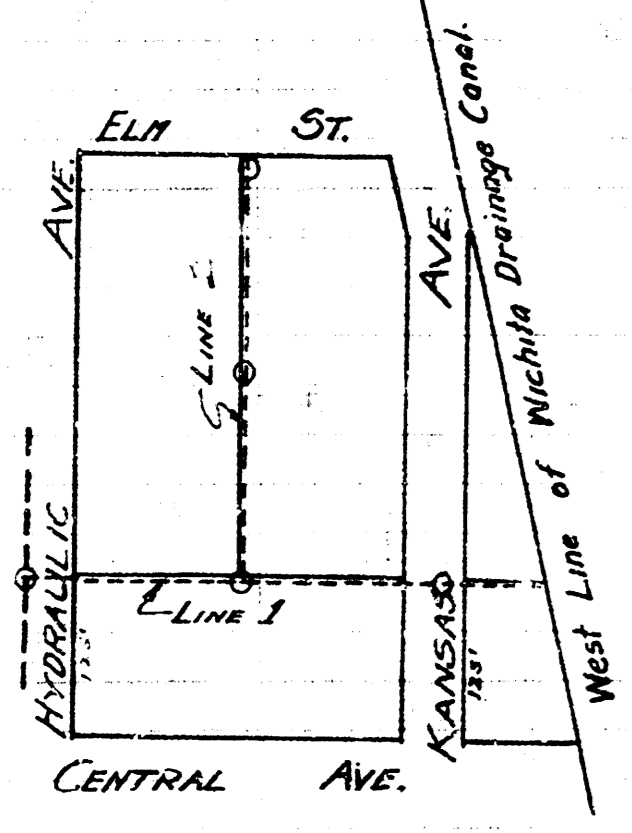
LAT. 4 - S.S. No. 1
See Plot at left.



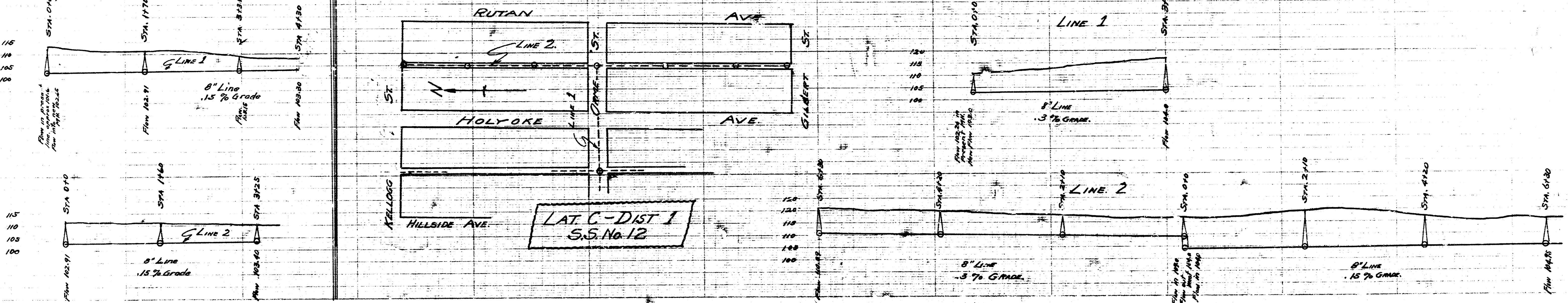
LAT. 1 - S.W.S. No. 24
See Plot at left.

B.M. 11224 L in Kessler bk. of walk E.
NE cor. Hydraulic & Central.

B.M. 13044 S Bolt on hydrant
NW cor. Rutan & Kellogg.



LAT. 7 - S.S. No. 20



LAT. C - DIST. 1
S.S. No. 12