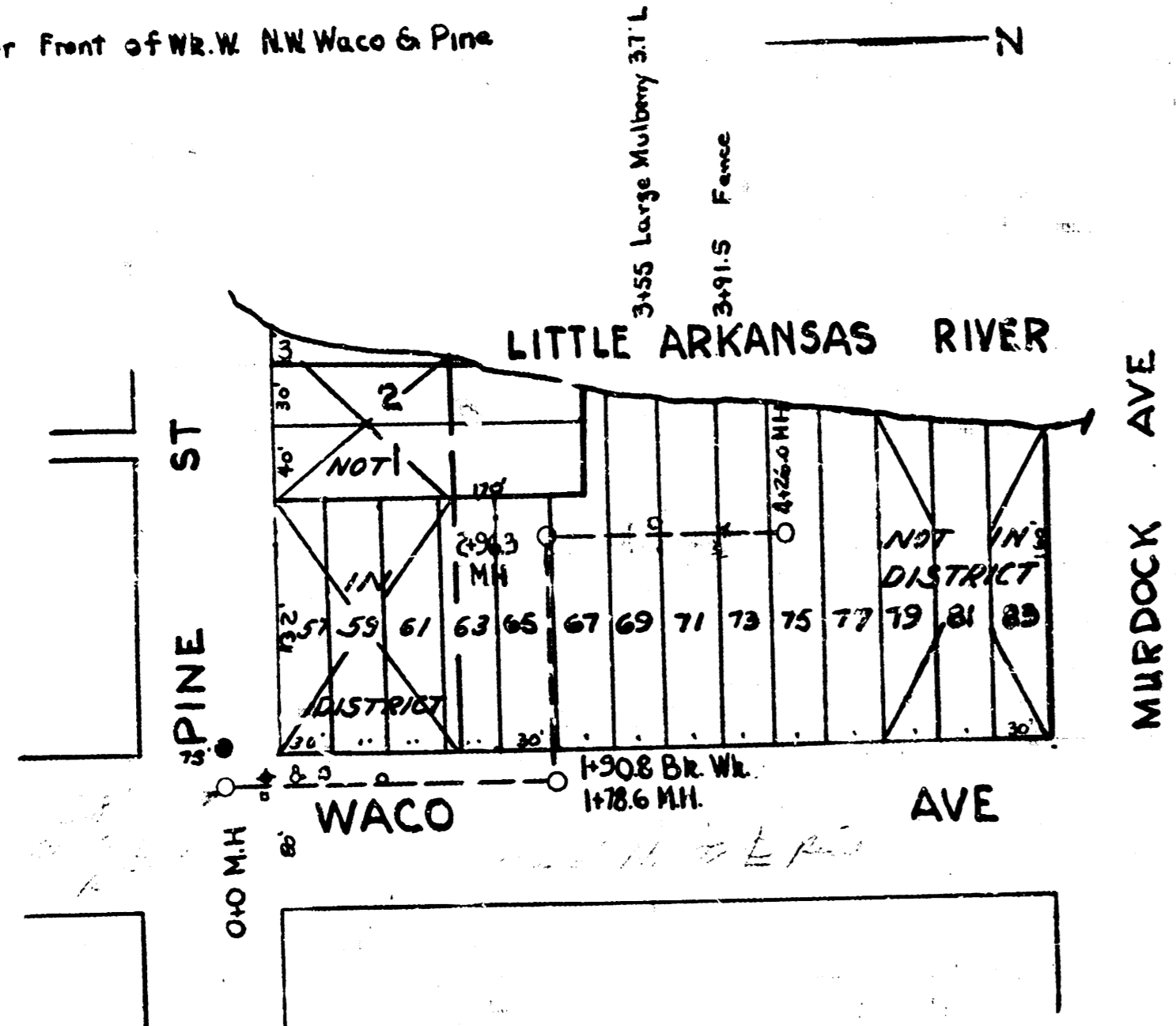
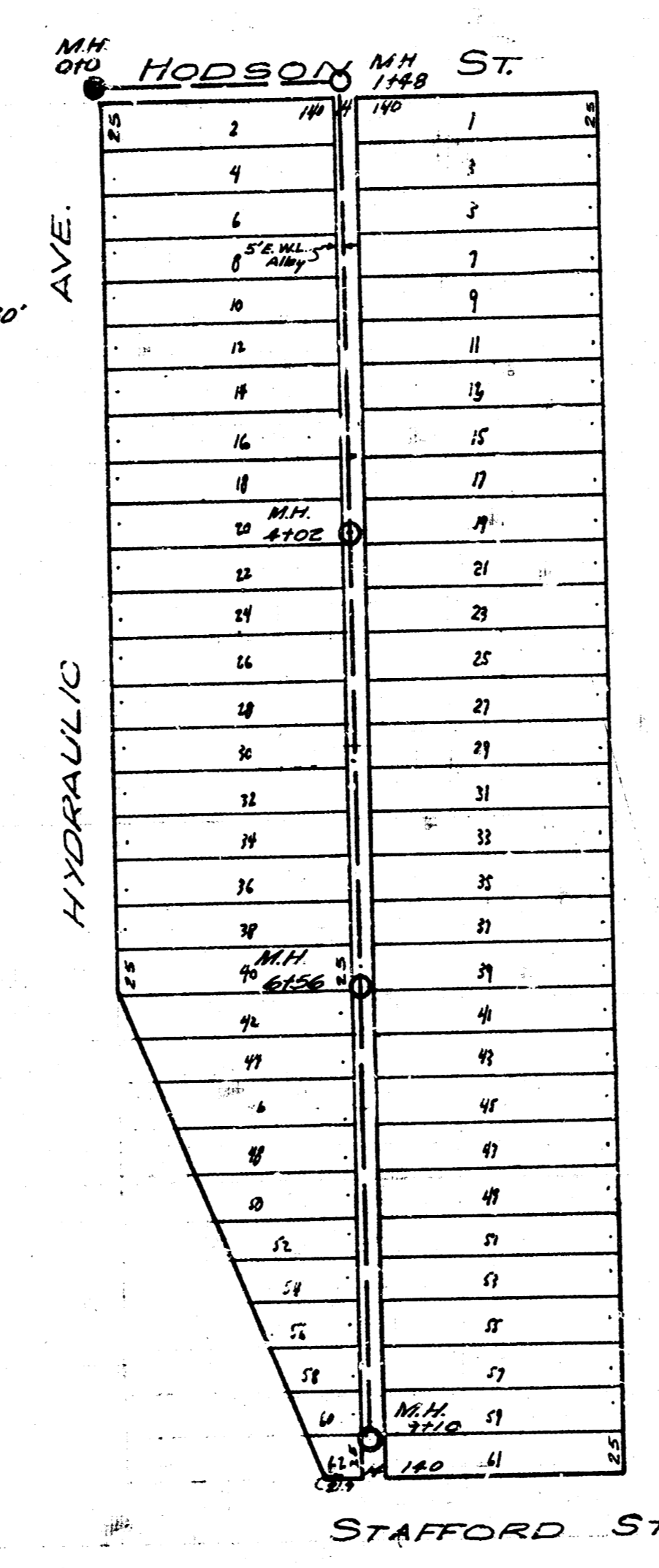
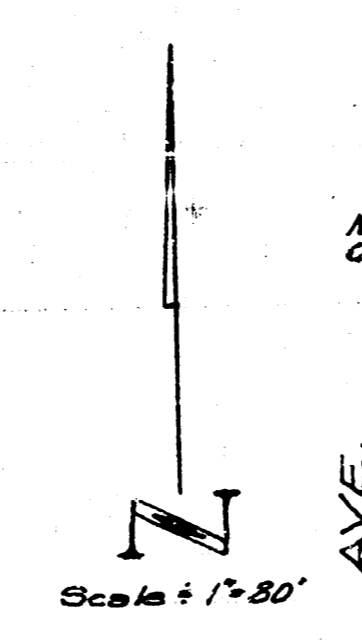
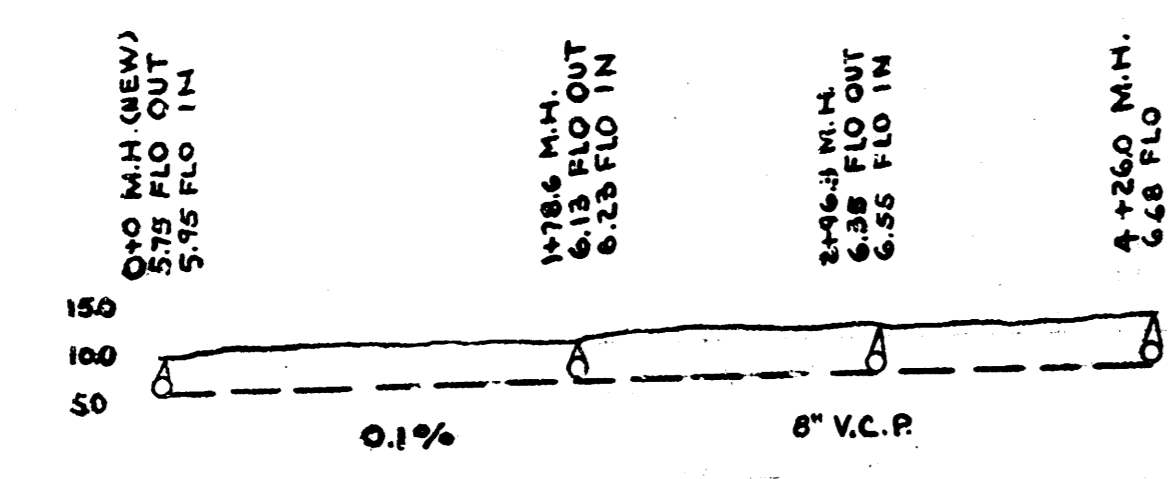


B.M. 10.00 "F" in Fisher front of N.W. Waco & Pine
[Assumed]

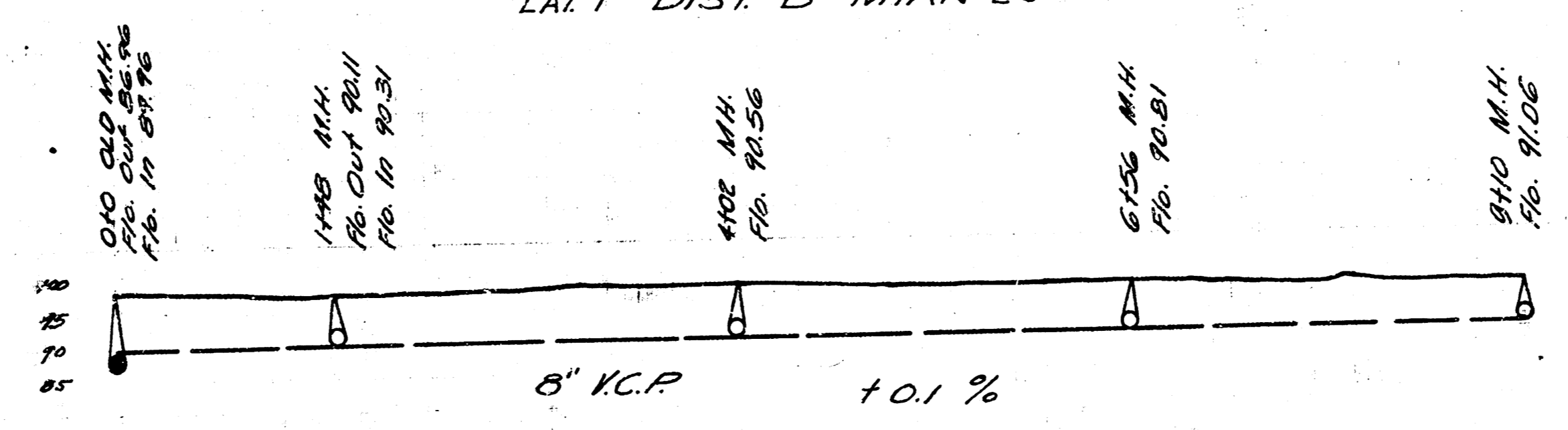


- 00 Bag Bit Cut. Adv.
- 0188 End. 1st Cut. Dig. Ch. Gr.
- 0188 End. Ch. Gr.
- 0417 St. Light 6" by 10" L
- 0415 2x2 CB. 10" R.
- 0430.3 & 4" App. Wk.
- 0436.6 Fire Hyd. 1.5" L.
- 0437 10" Hickory Tree 2.3" L.
- 0443 Water Meter 1.8" L.
- 0450 & 5.3" App. Wk.
- 1450 & 5.3" App. Wk.
- 1450 & 9.0" Dr.



B.M. 97.10 "P" in ditch E.C.R. bet. alley S.S. Hodson
between Kansas & Hydraulics
B.M. 97.18 NW COR. CONC. PARCH. 1ST HOS. WEST
KANSAS S.S. STAFFORD.

LAT 1 DIST B MIAN 20



LAT 10 S.S.1
DEPT. of SERVICE
CITY of WICHITA, KANS.
Engineering Division
L.K. WHITE City Engineer
Sanitary Sewer
Scale 1" = 80'

DEPARTMENT OF SERVICE
WICHITA CITY OF KANSAS
Engineering Division
L.K. WHITE City Engineer
Sanitary Sewer Scale 1" = 80'