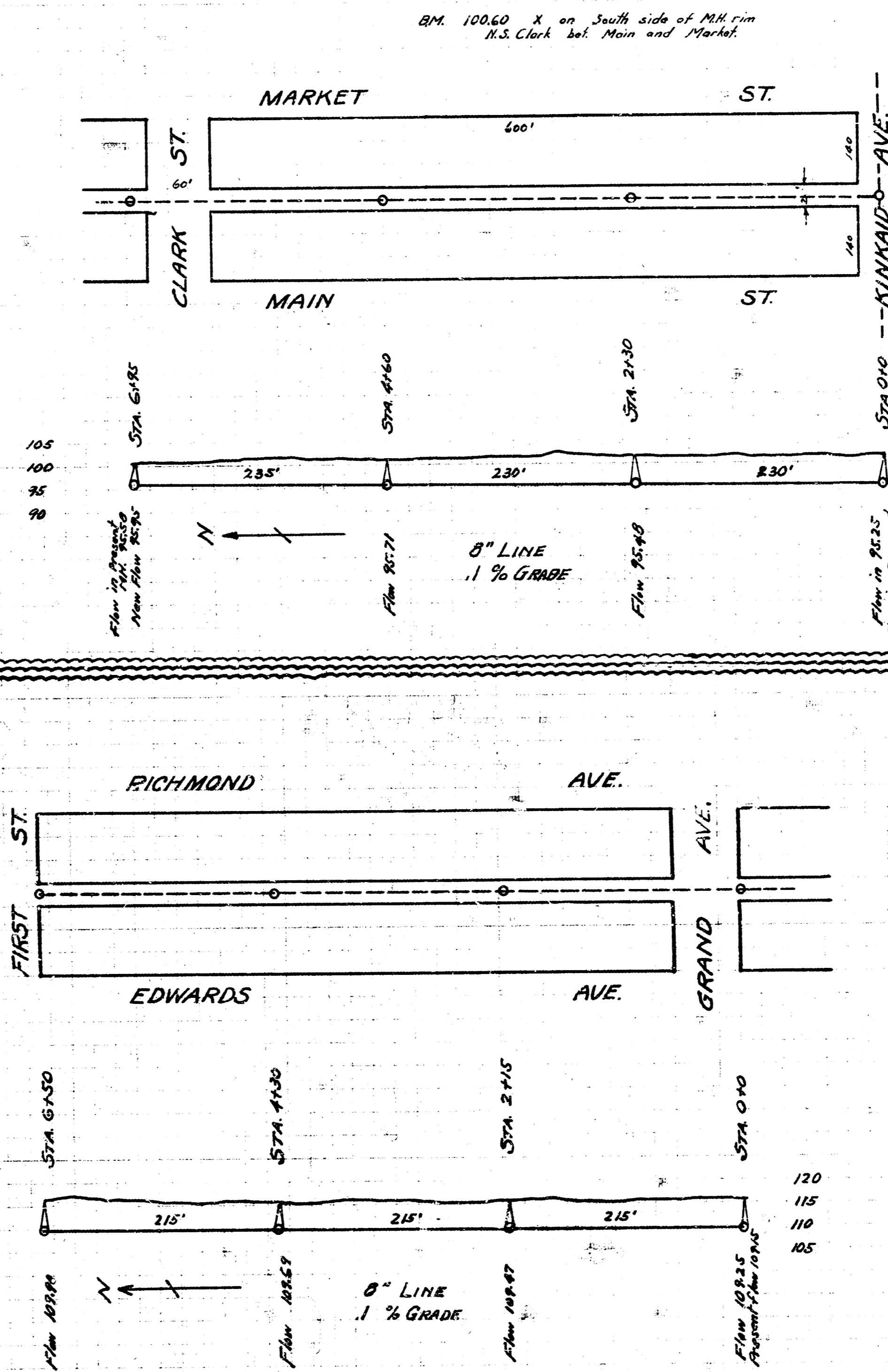
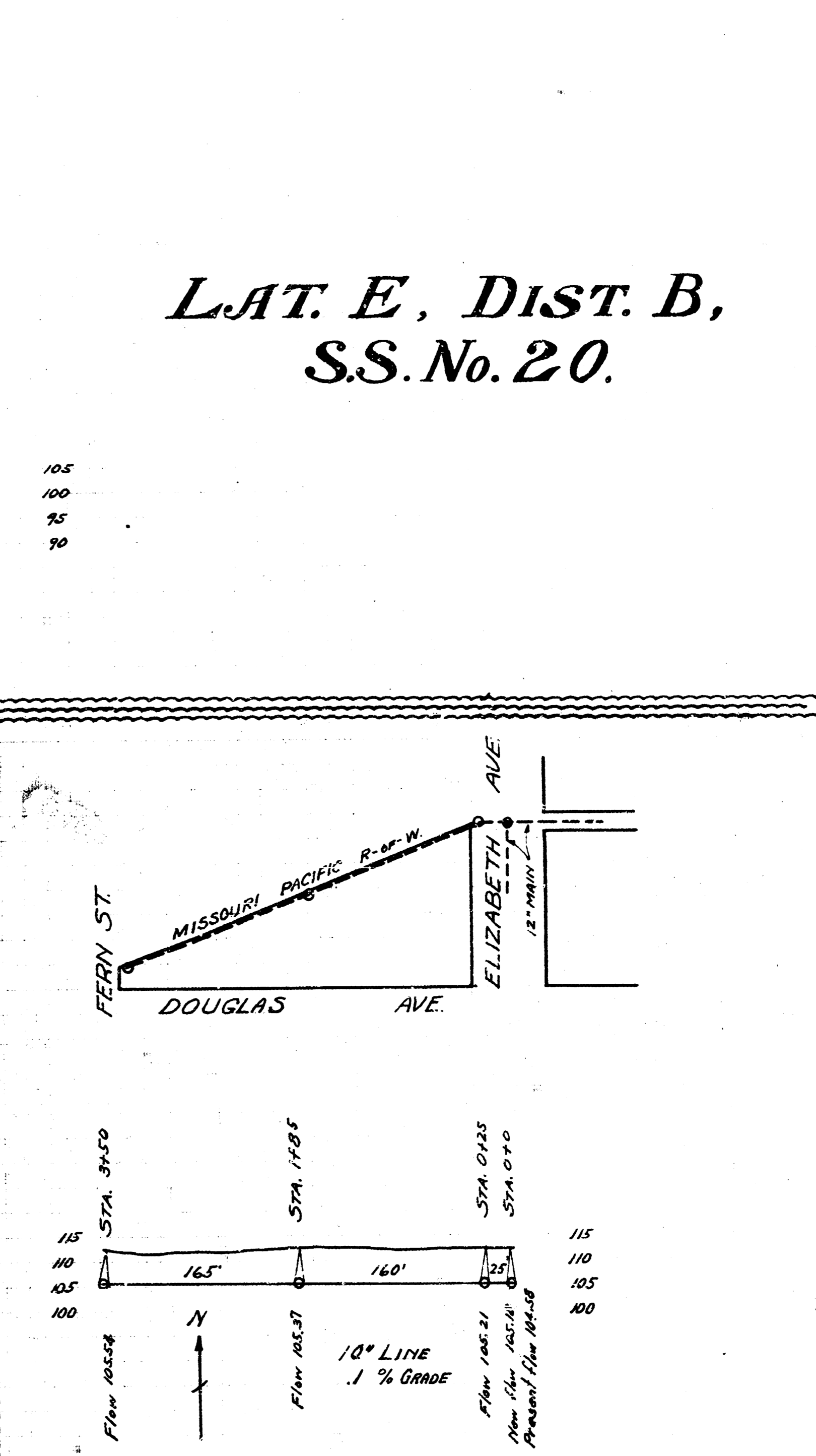


**DIST. Q  
S.S. No. 12**



**LAT. 6, DIST. A,  
S.S. No. 21**

B.M. 116.41 C in Grana - South side int. of R.W. cor. Richmond and First.



**LAT. E,  
S.S. No. 8.**

B.M. 111.77 C in Hughes - back of wall S.W. cor. Elizabeth and Douglas.

**LAT. E, DIST. B,  
S.S. No. 20.**