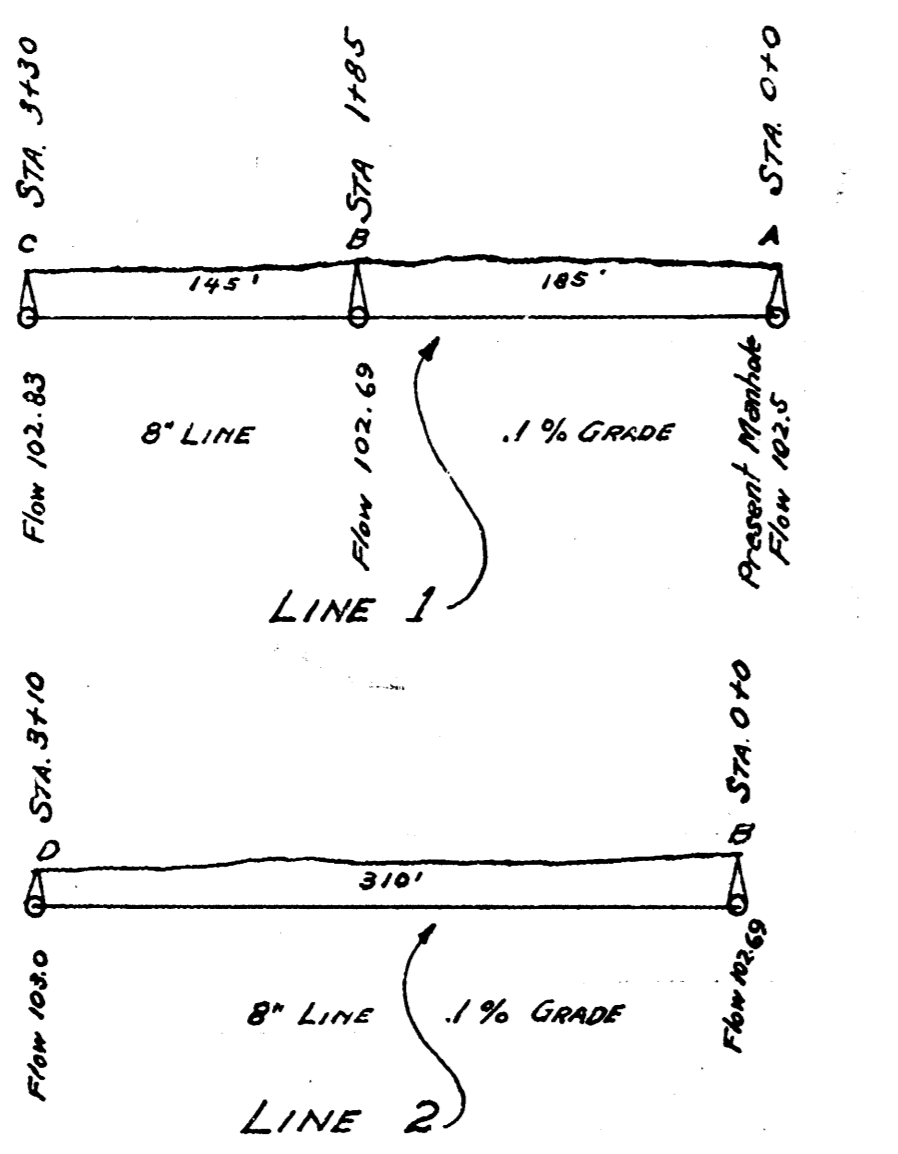
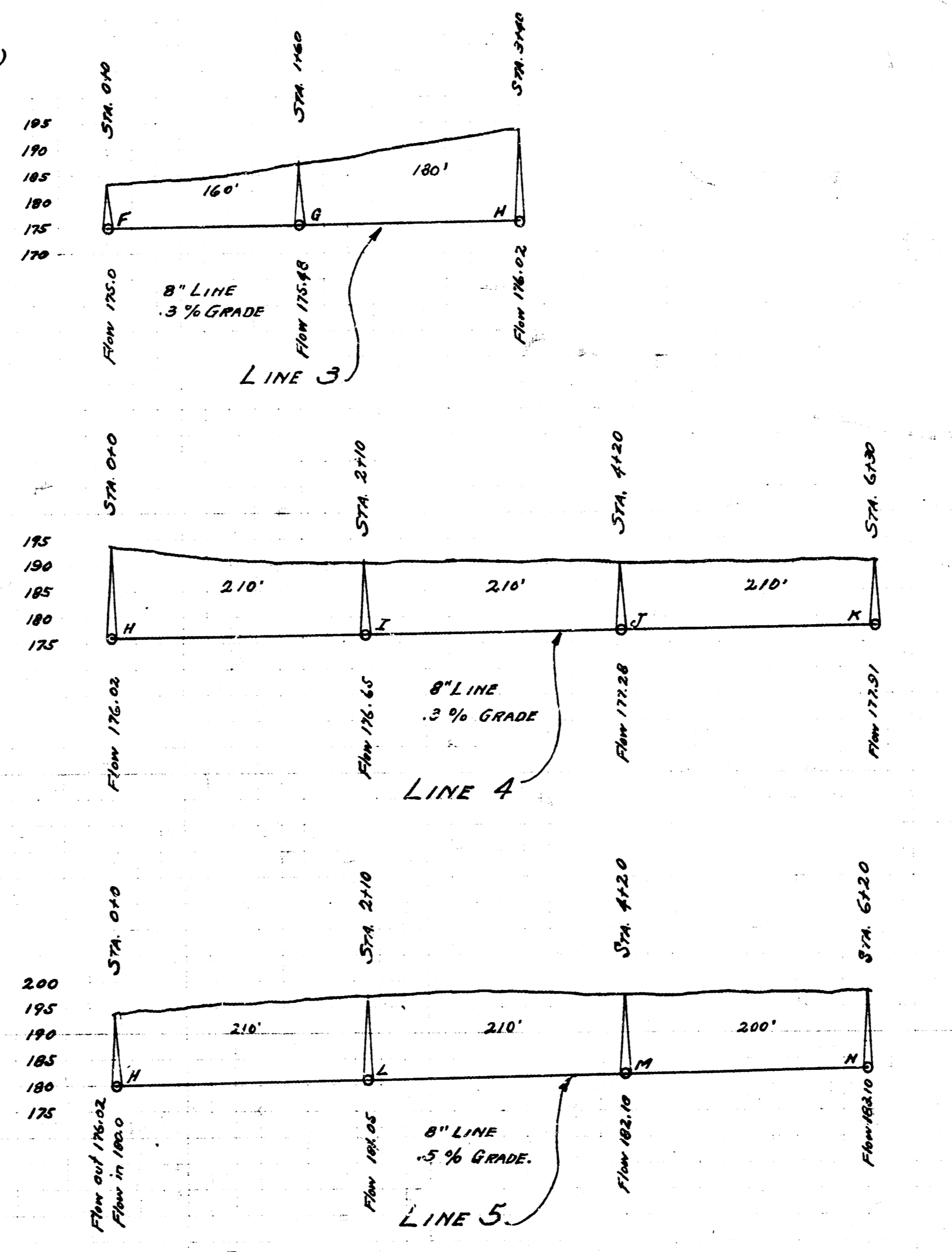
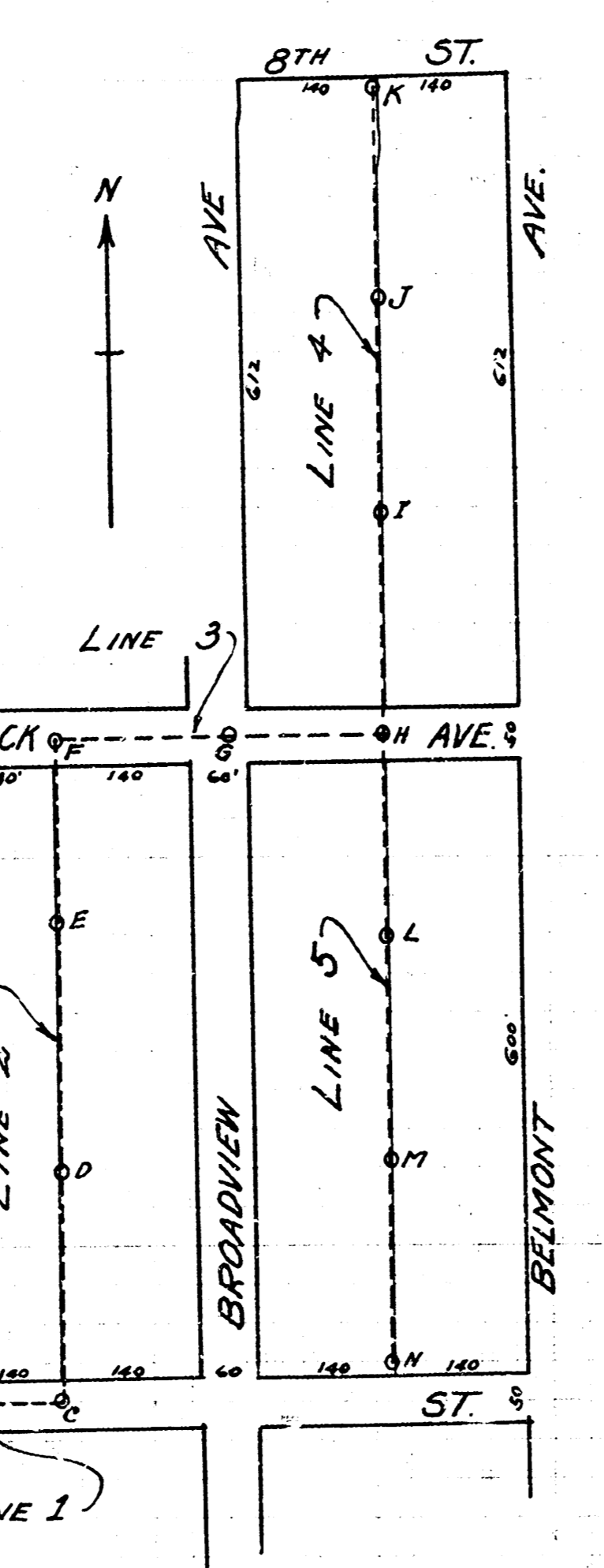


D.M. 108.39 L in Long. frt. of wall int. sq. North. NW Dodge and McCormick.  
**LAT. F - S.S. No. 8.**

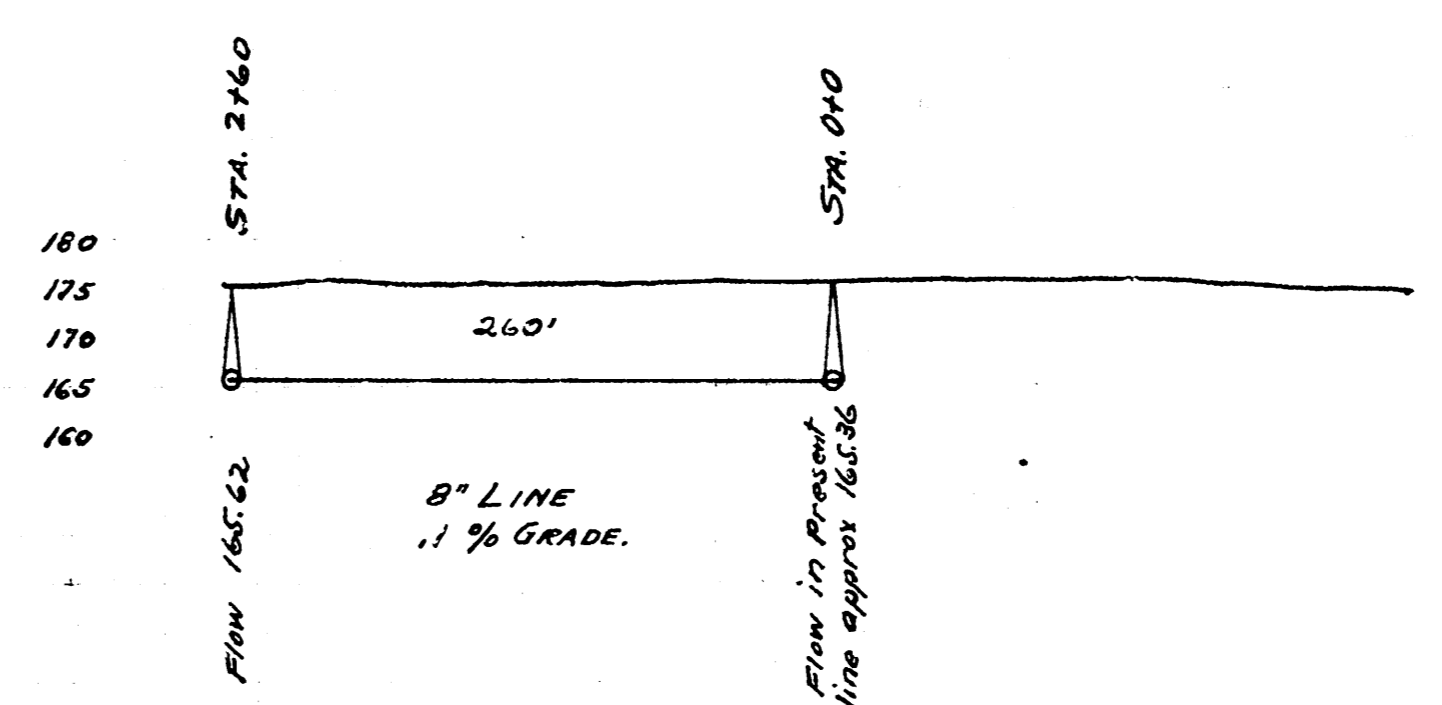
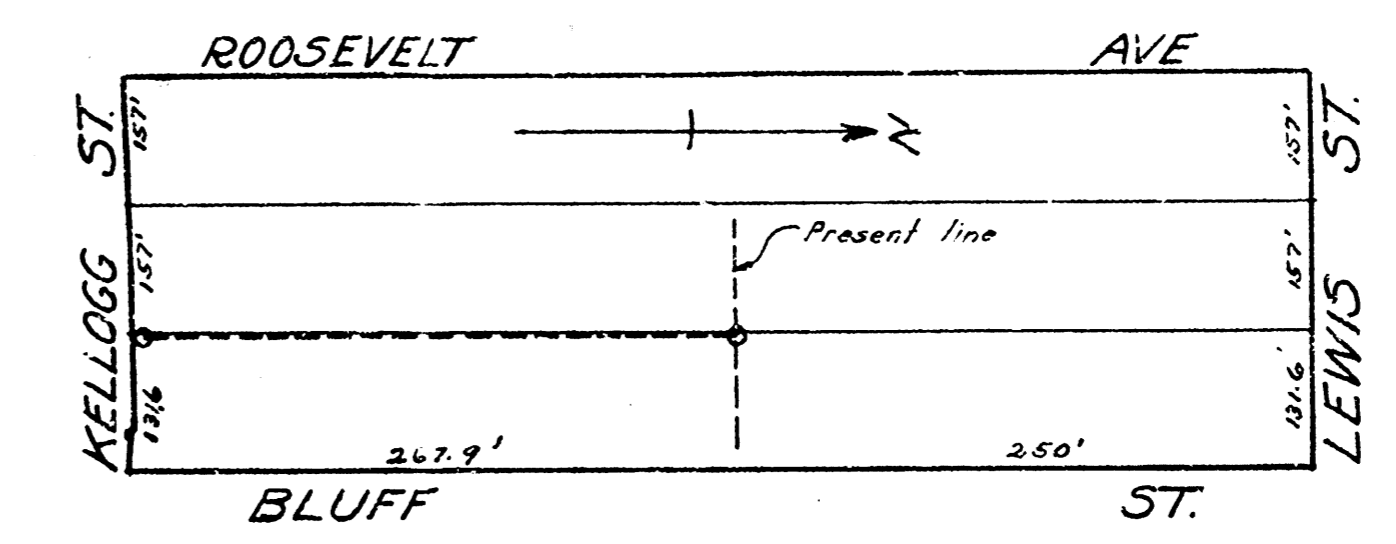


B.M. 174.52 X on end of curb at NS. of Cook, on Bluff. (old curb)



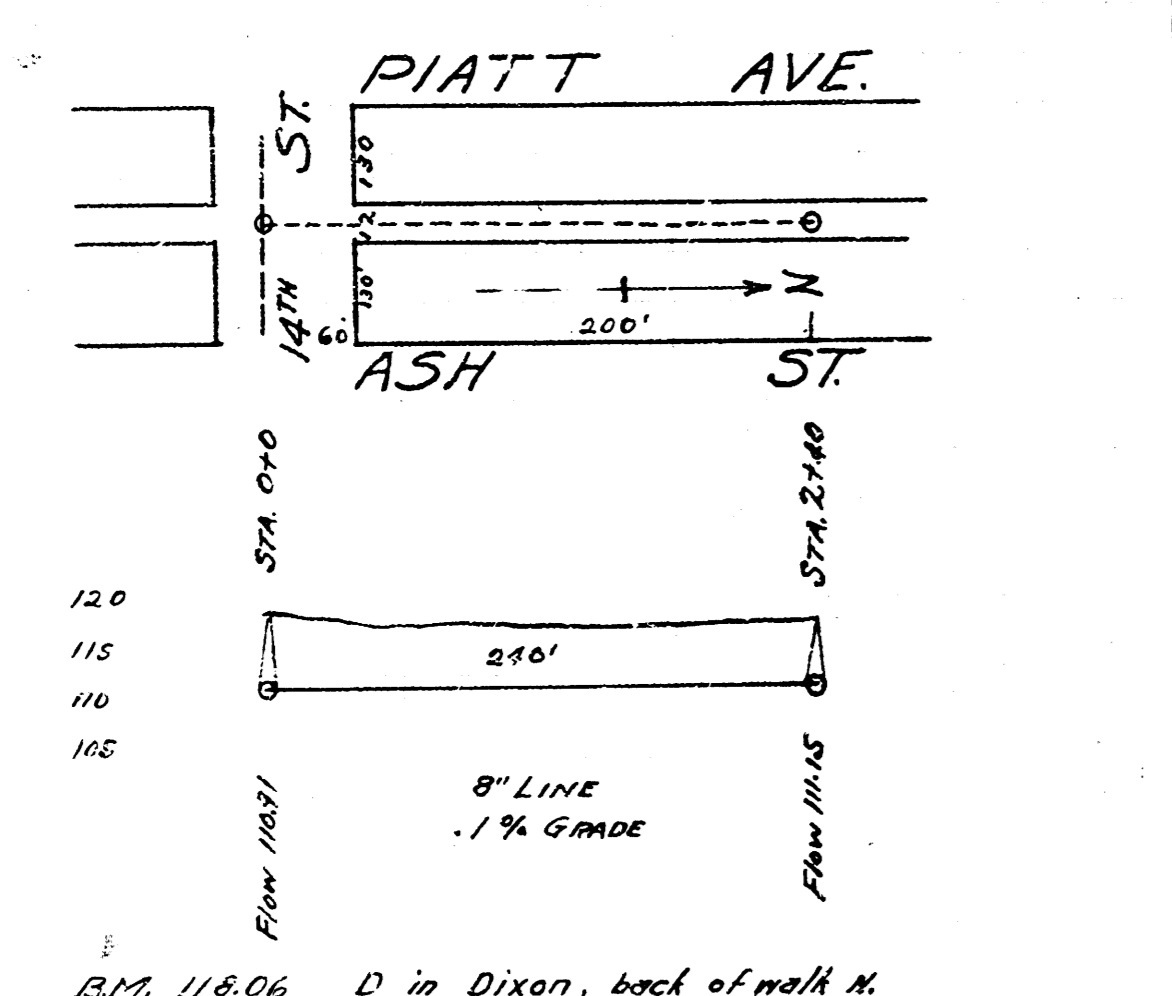
**LINES 1 AND 2**  
**LAT. Y - DIST. D - S.S. No. 12**

**LINES 3, 4 AND 5**  
**LAT. 2 - DIST. D - S.S. No. 12**

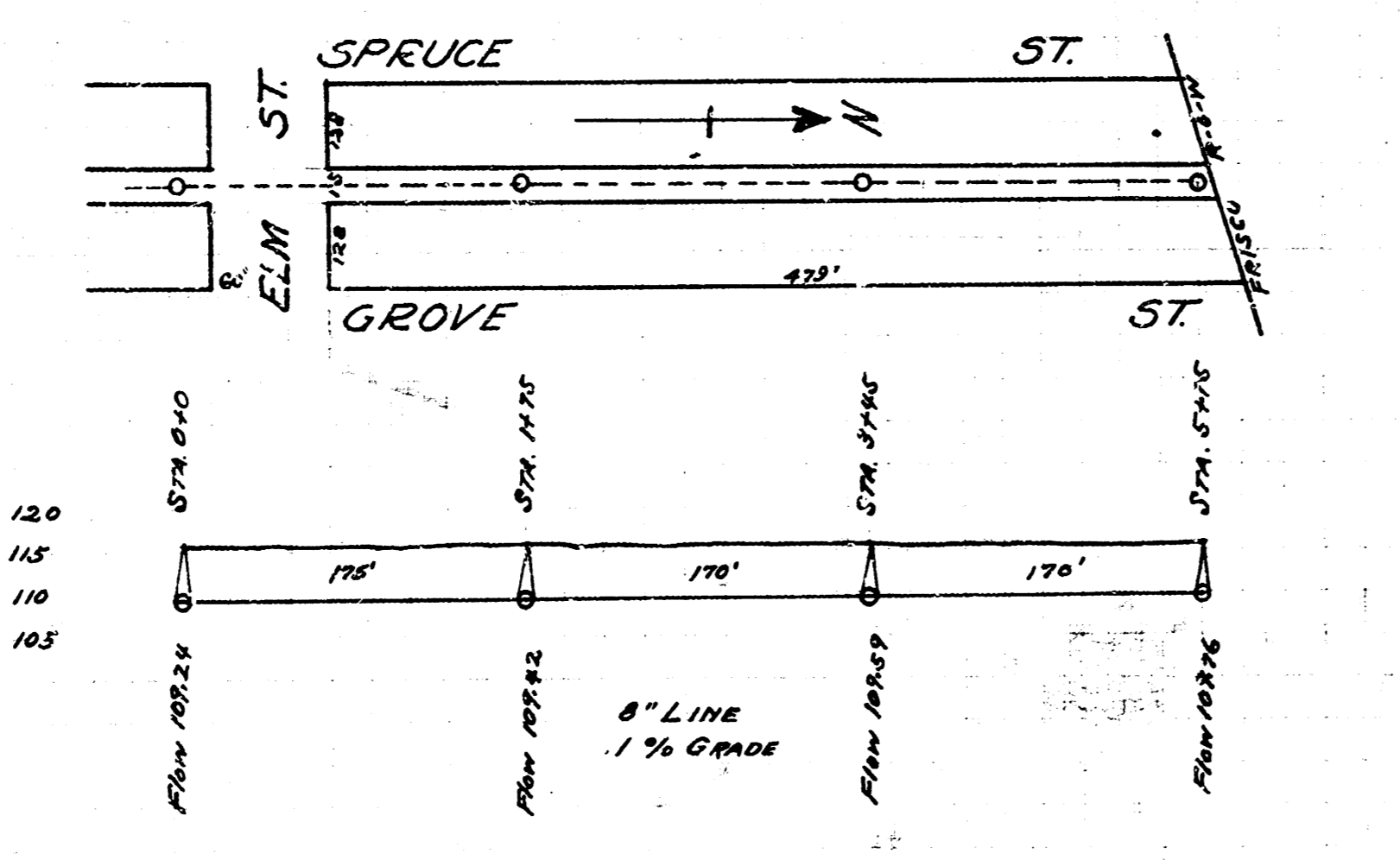


B.M. 171.74 Iron in timber NE. cor. Roosevelt & Lewis

**LAT. 27 - DIST. A - S.S. No. 12**



D in Dixon, back of wall N. NE cor. Ash and Piatt.  
**LAT. K - DIST. O - S.S. No. 12.**



B.M. 116.20 H in Hurst, ctr. of W. South - SW. cor. Grove and Elm.  
**LAT. Z - DIST. D - S.S. No. 12**