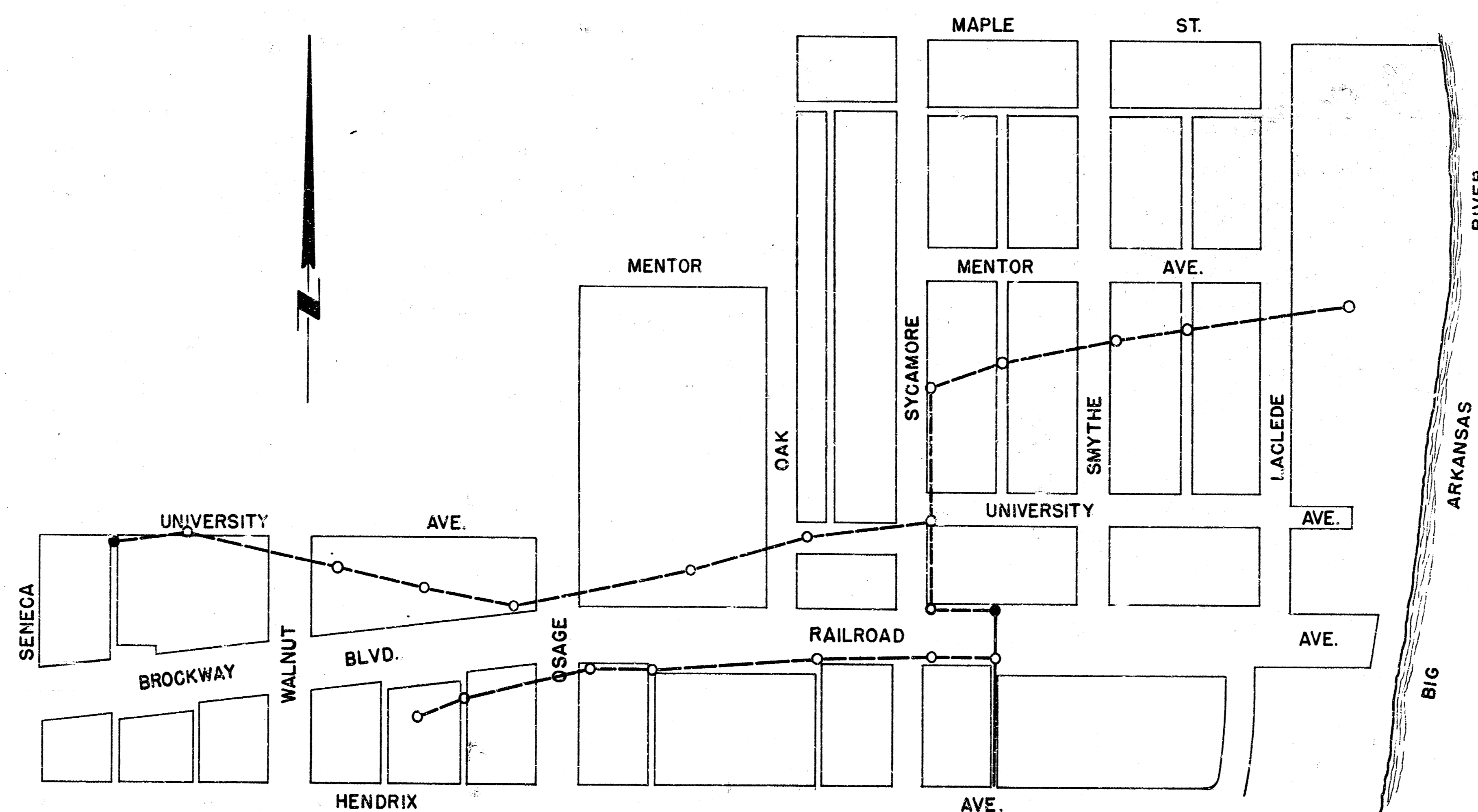


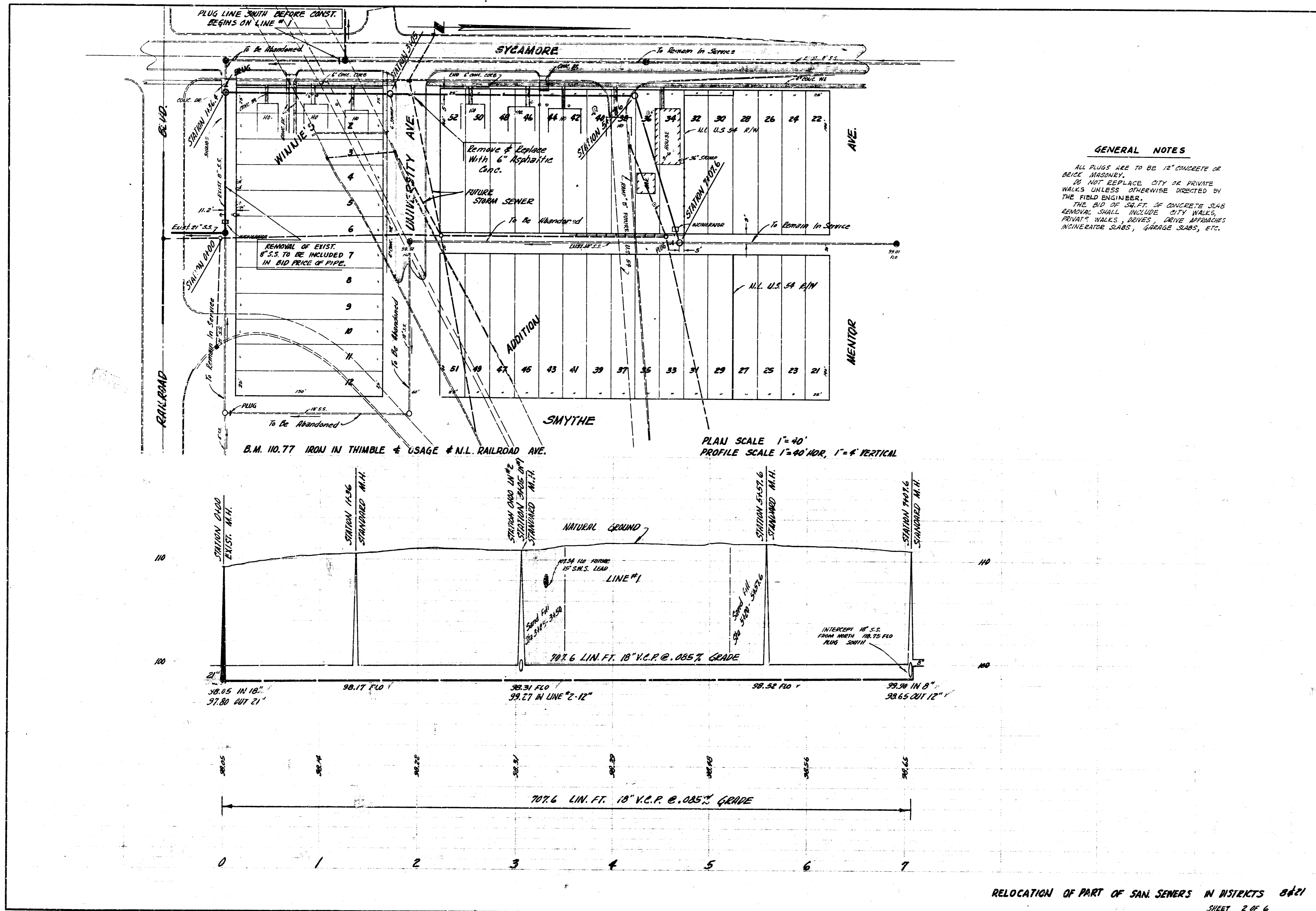
LOCATION MAP
RELOCATION OF PART OF SAN. SEWERS IN DISTRICTS 8 & 21
IN CONNECTION WITH THE CONSTRUCTION OF U.S. 54 TRAFFIC
ENTERCHANGES AT SENECA & SYCAMORE STREETS

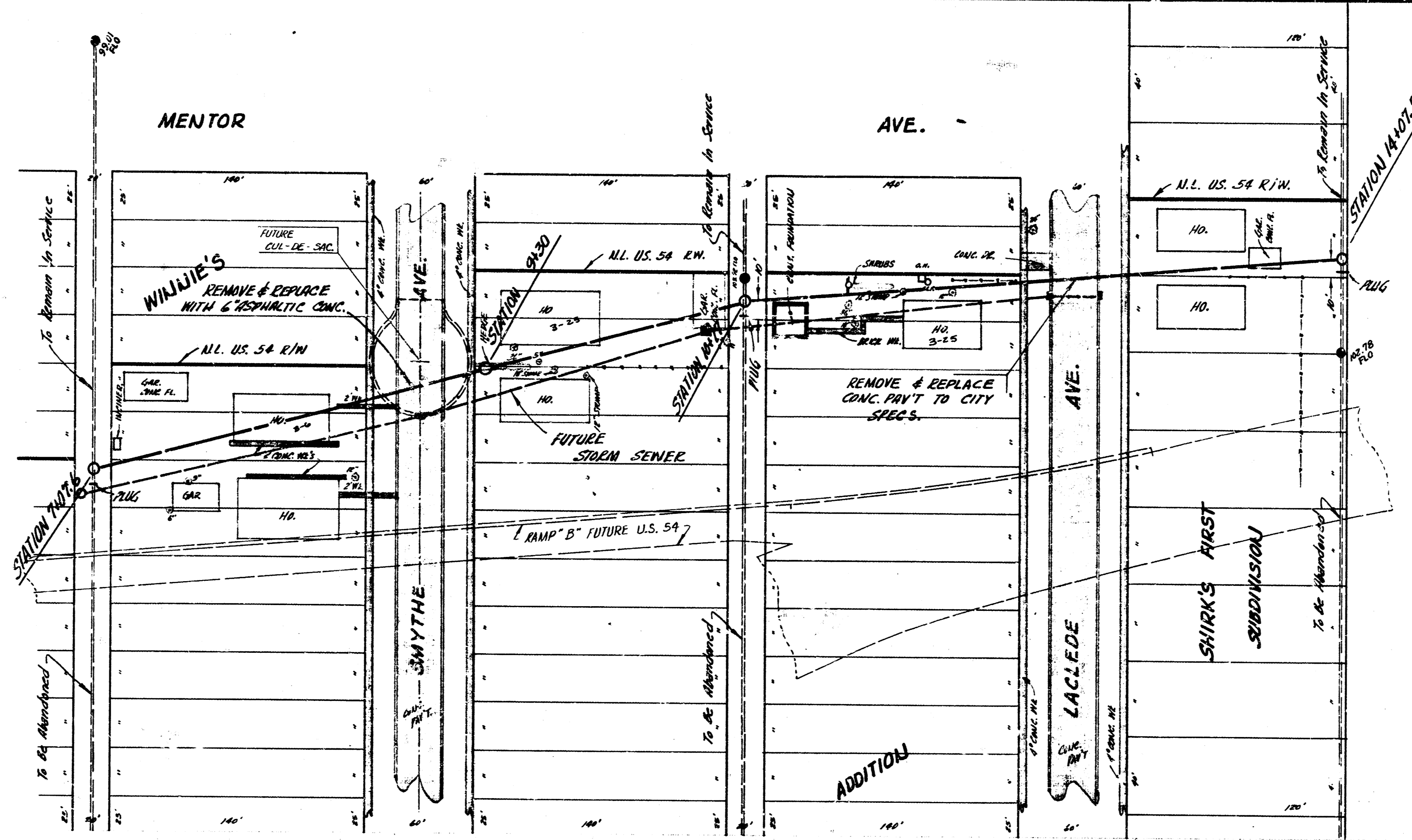
B.E. SMITH CITY ENGINEER

SURVEY BY - KRINGLER
DRAWN BY - ADRIAN
CHECKED BY -
PRICE

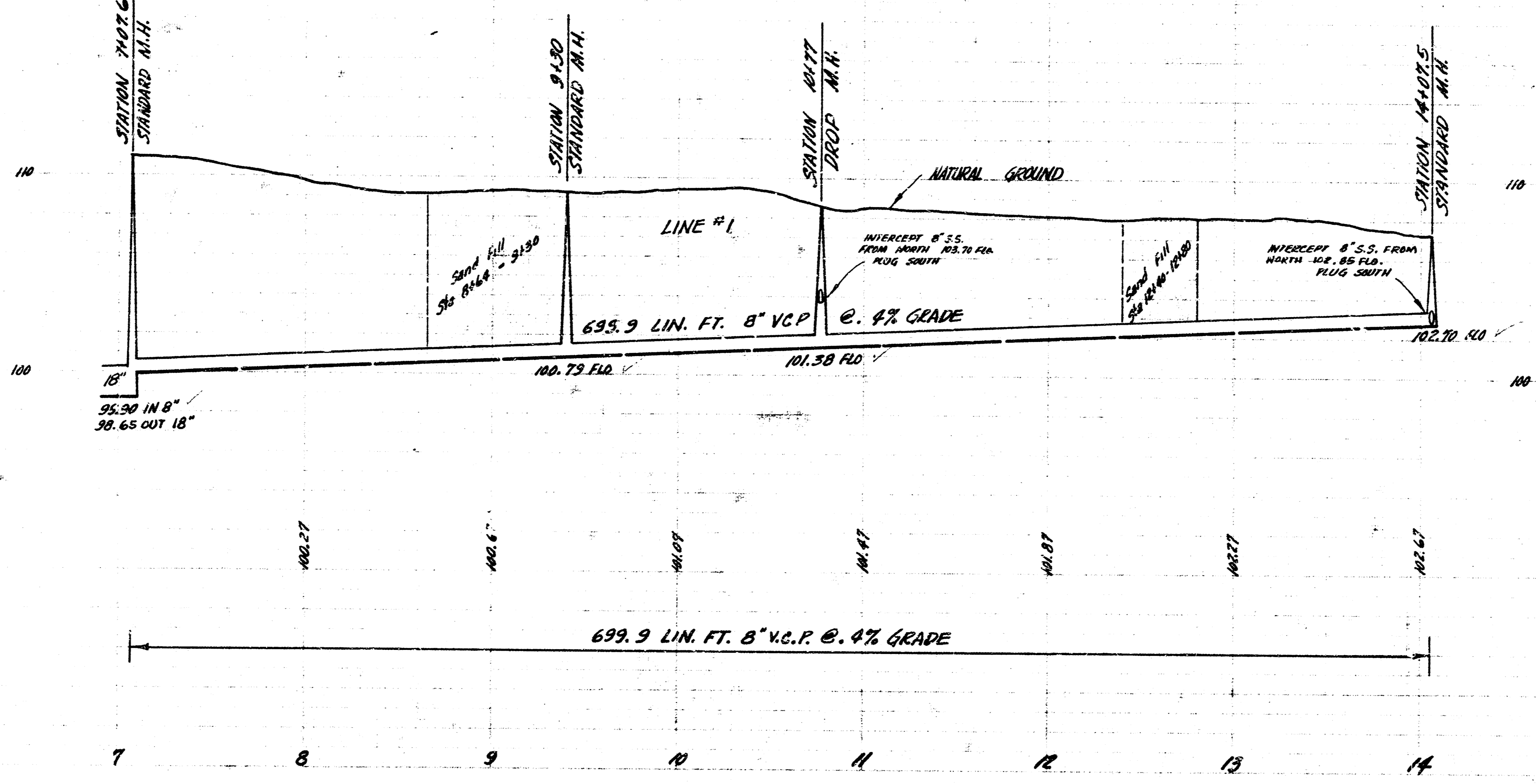


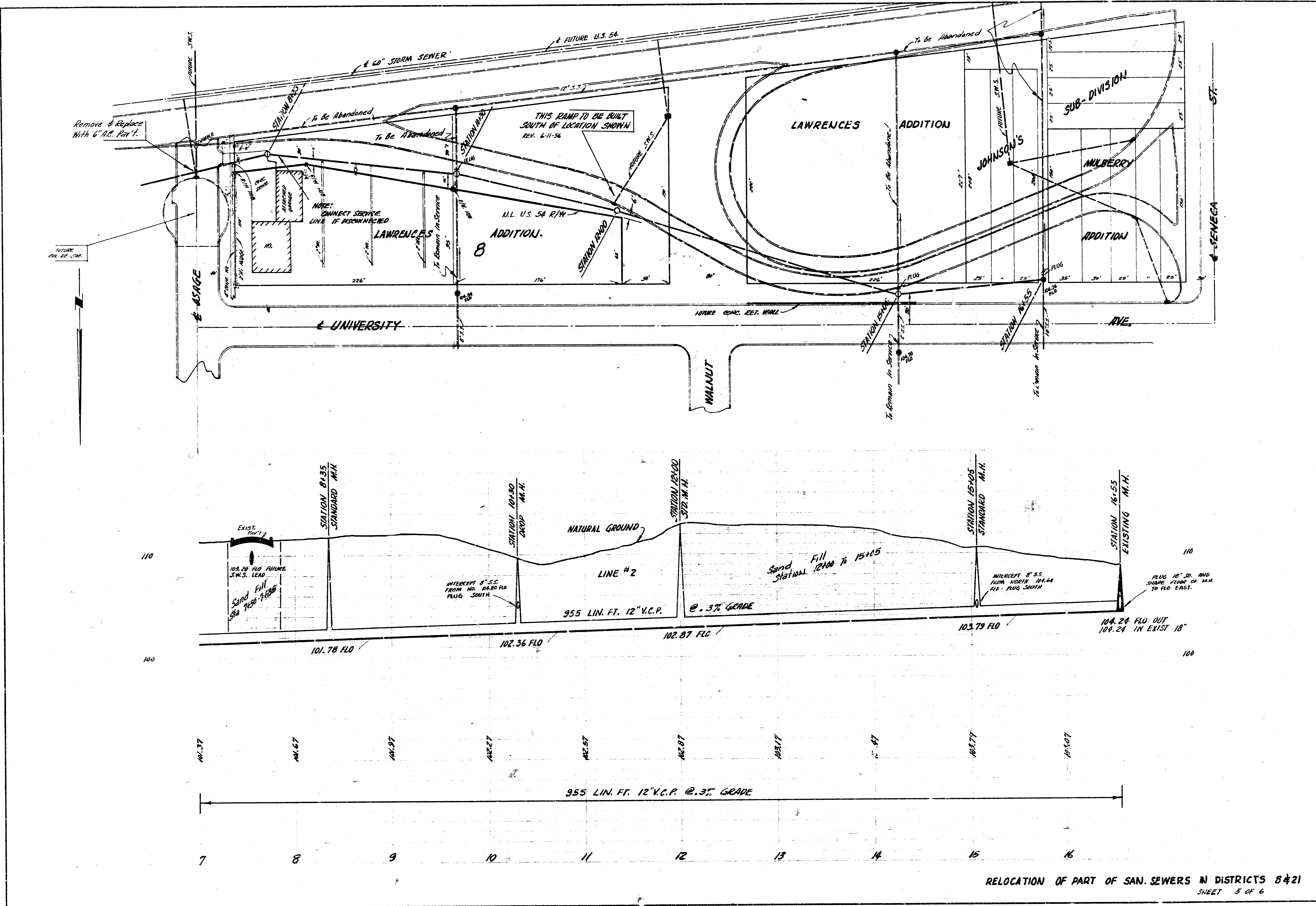
RELOCATION OF PART OF SAN. SEWERS IN DISTRICTS 8 & 21
MARCH 1857 SHEET 1 OF 6



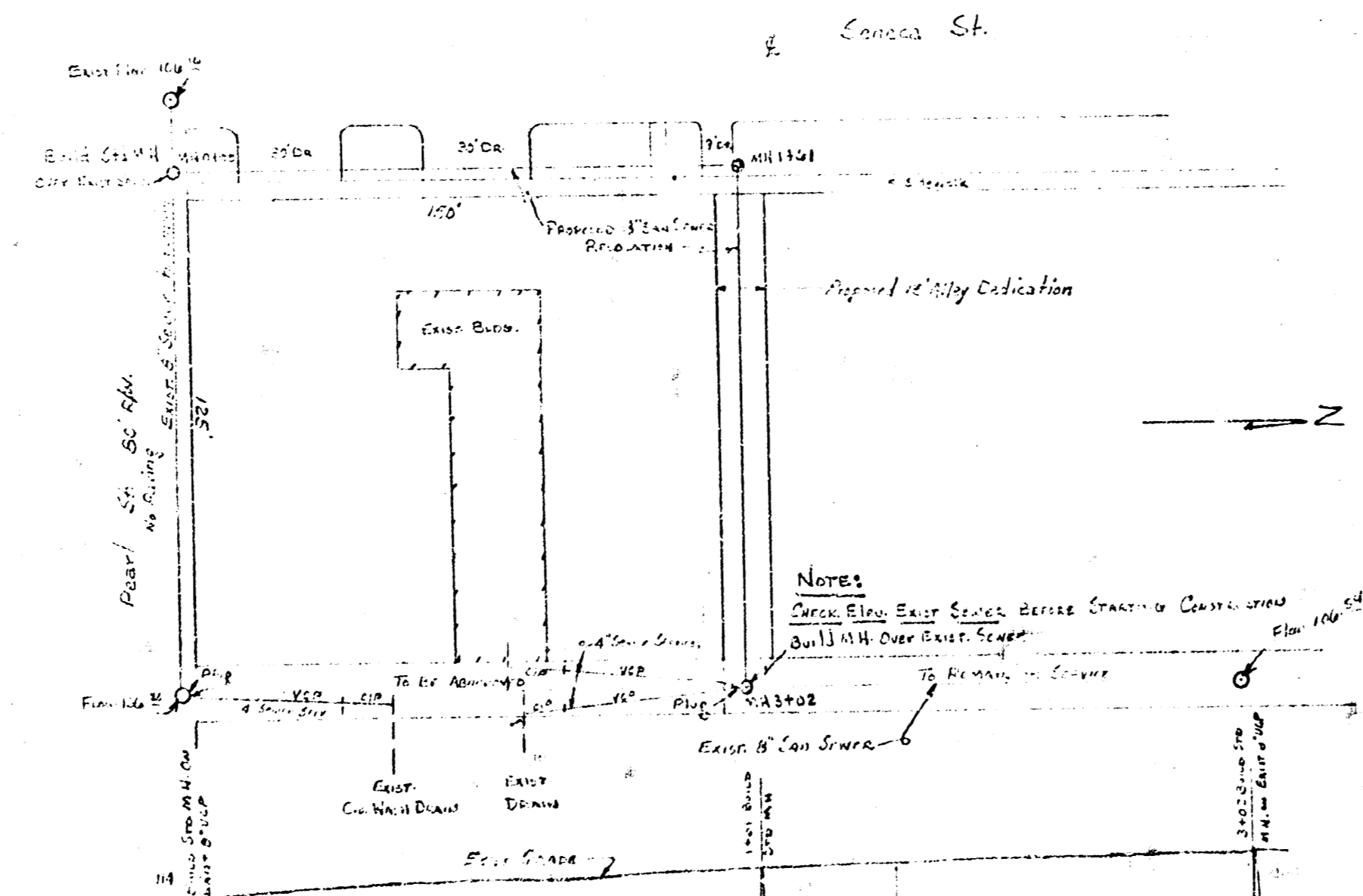
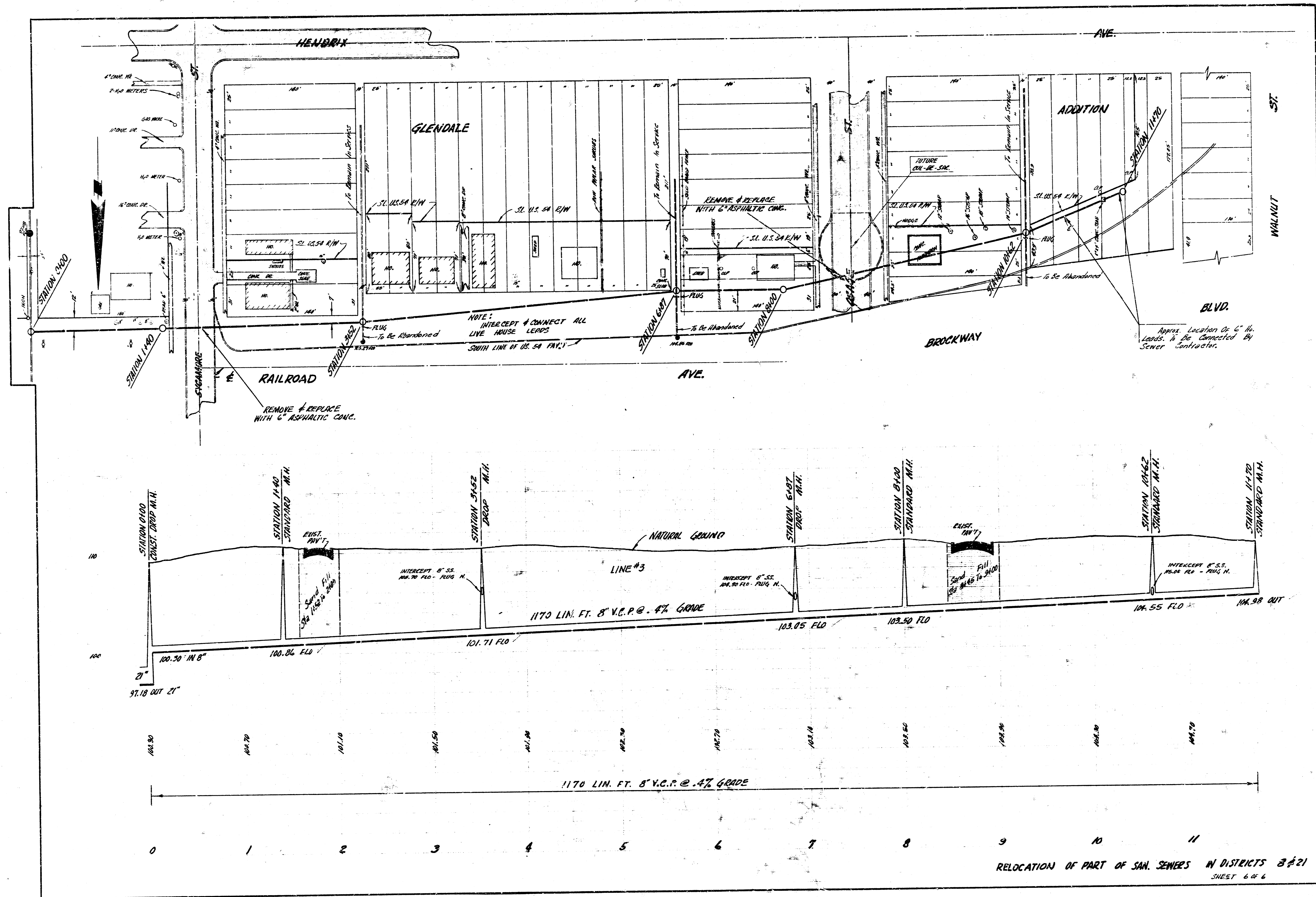


PLAN SCALE 1"=40'
 PROFILE SCALE 1"=40' HOR, 1"=4' VERTICAL





RELOCATION OF PART OF SAN. SEWERS IN DISTRICTS 8 & 21
SHEET 5 OF 6



CITY OF WICHITA
 APPROVED: _____
 Date: 10/12

NOTE TO CONTRACTOR
 This project will be constructed under the supervision of the CITY ENGINEER. The CONTRACTOR will reimburse the City of Wichita for all cost of engineering, printing, and reproduction.