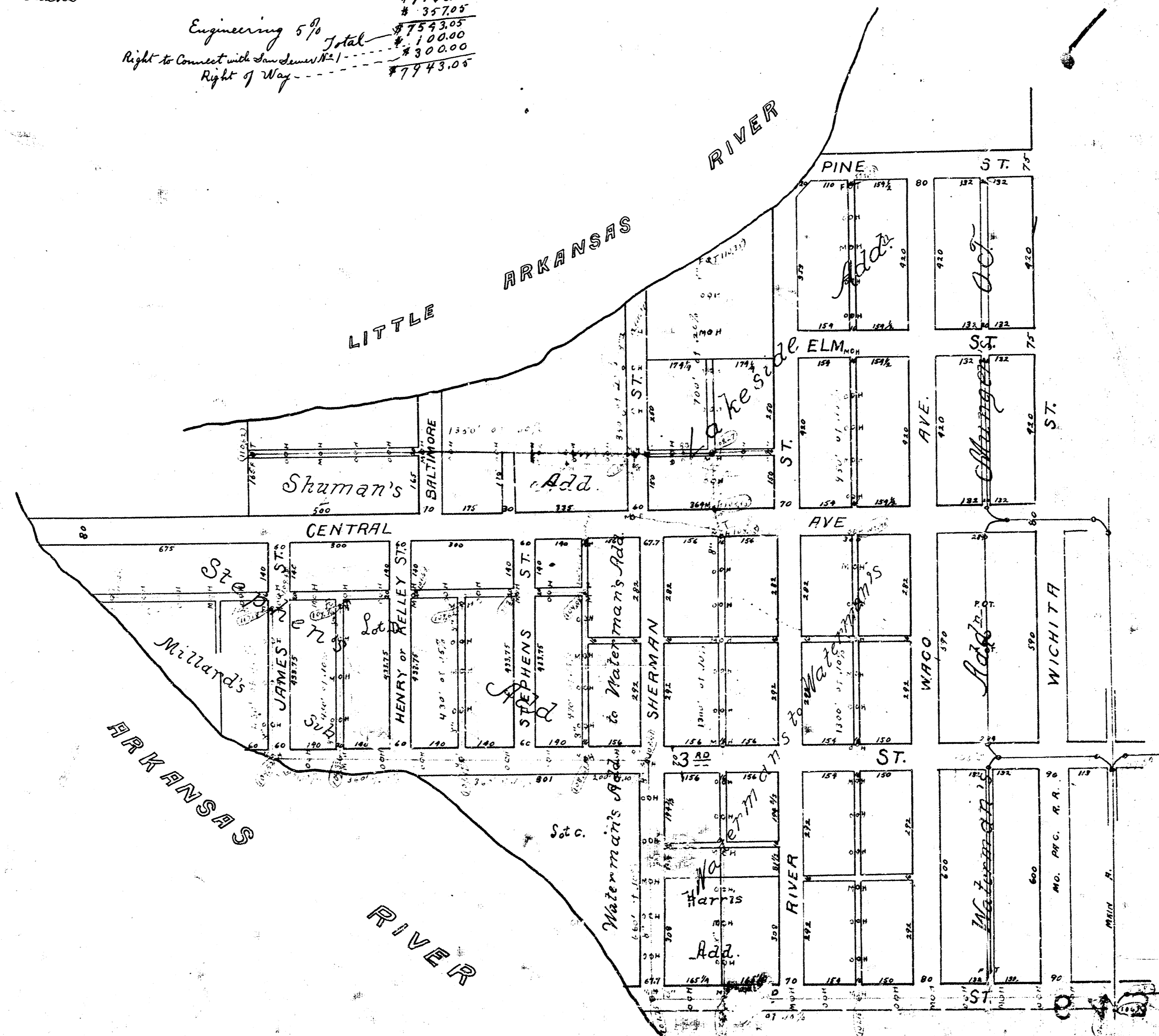


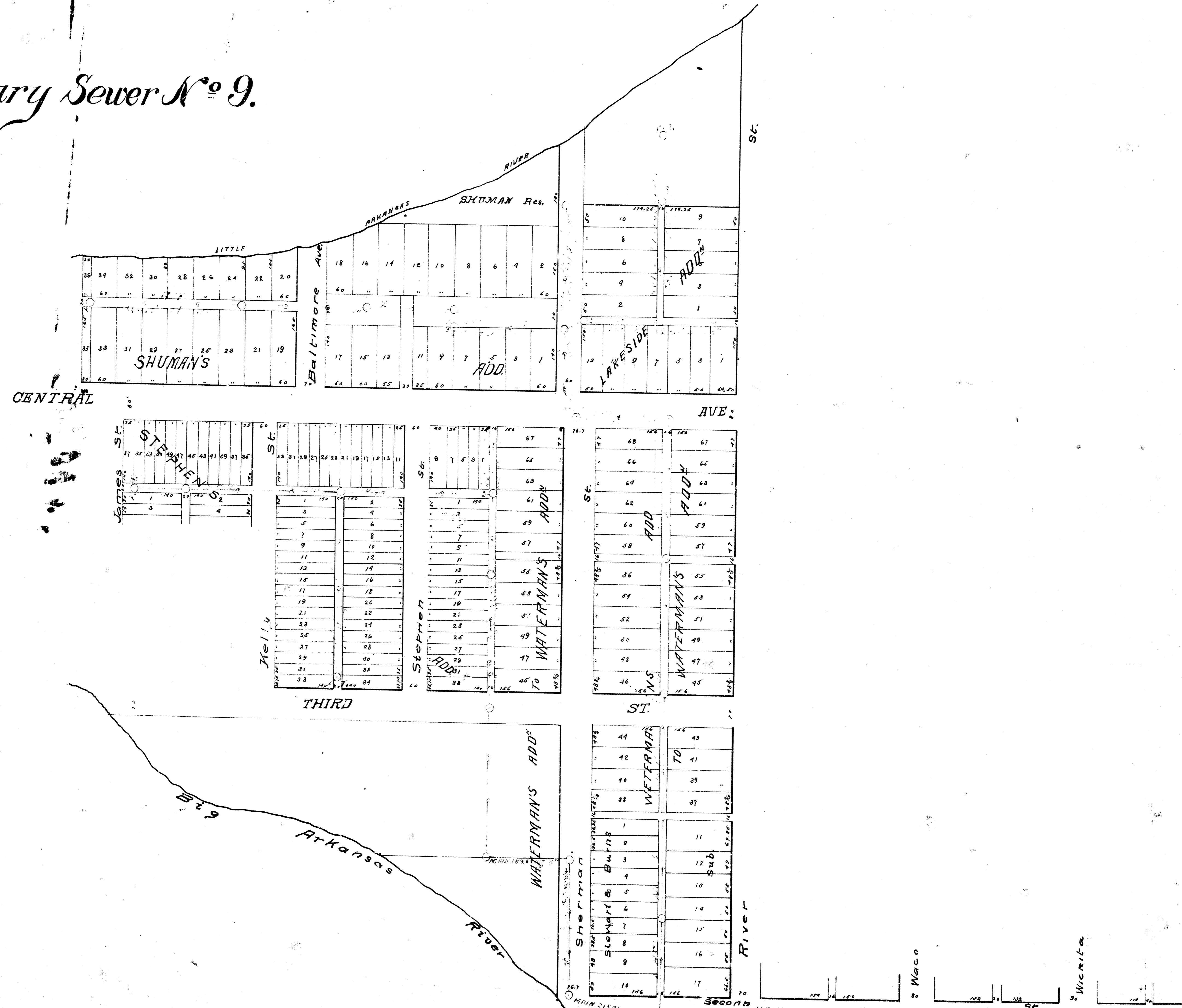
Sewer # 9

Estimate of Cost

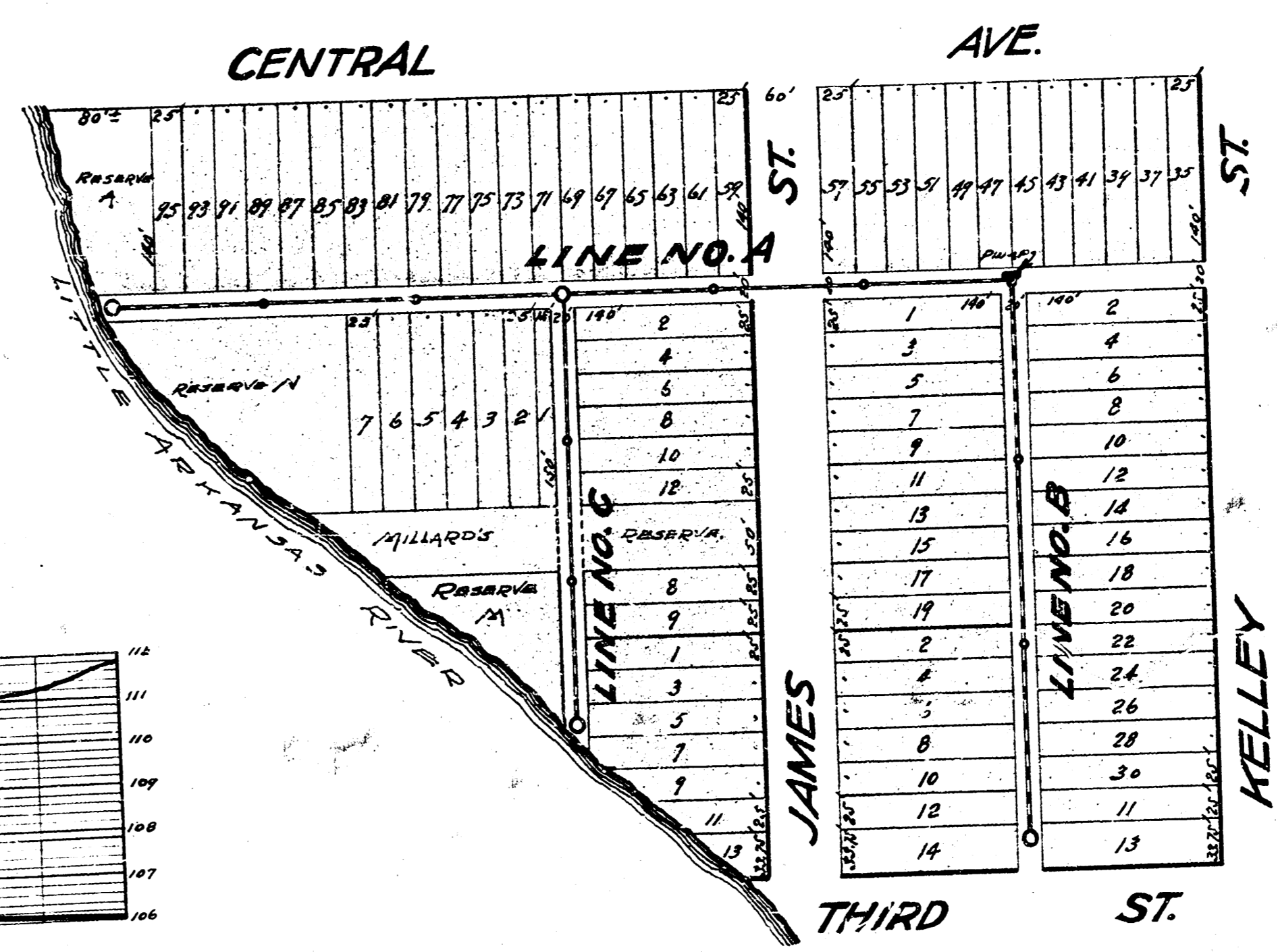
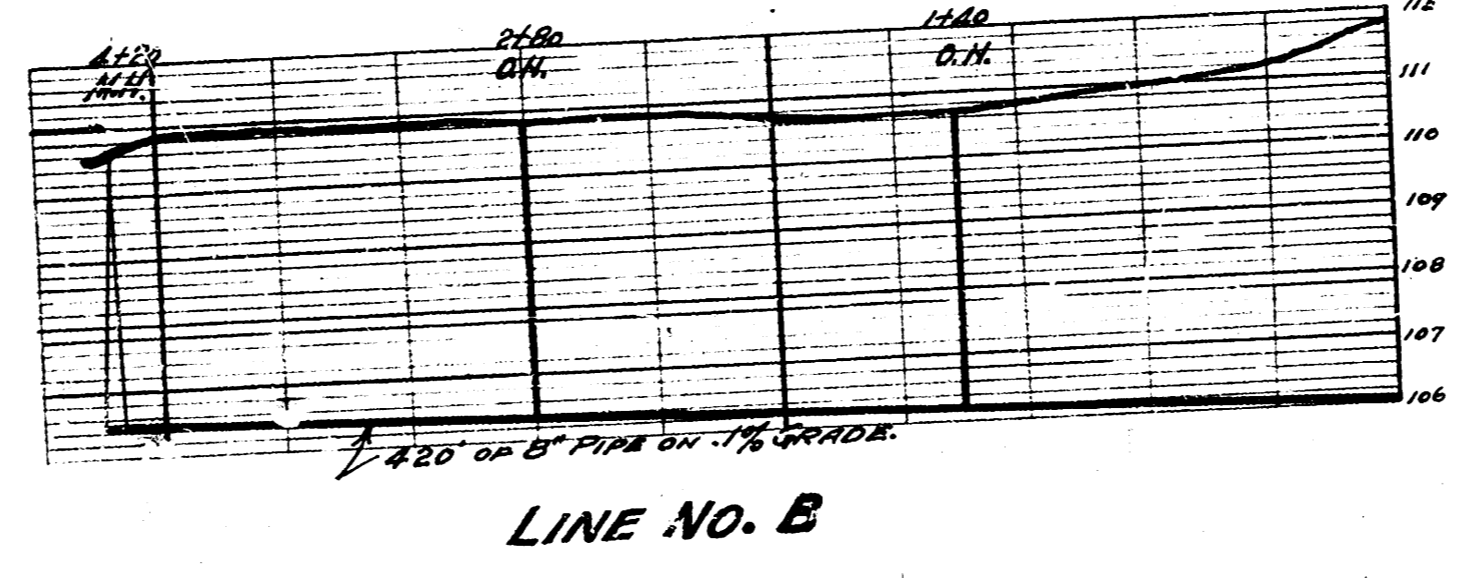
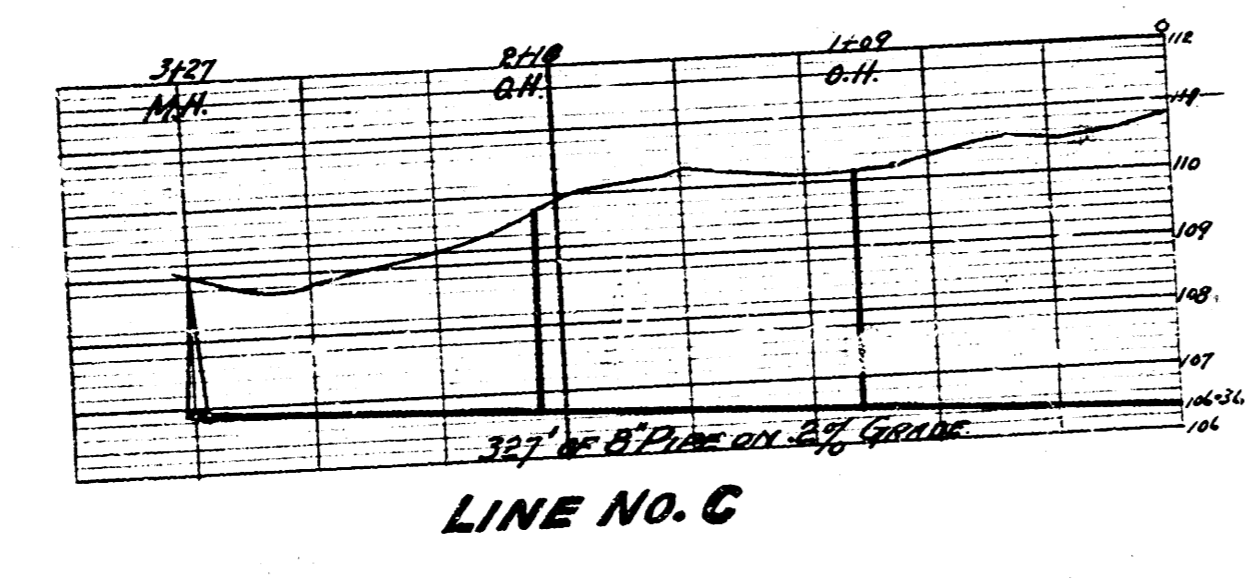
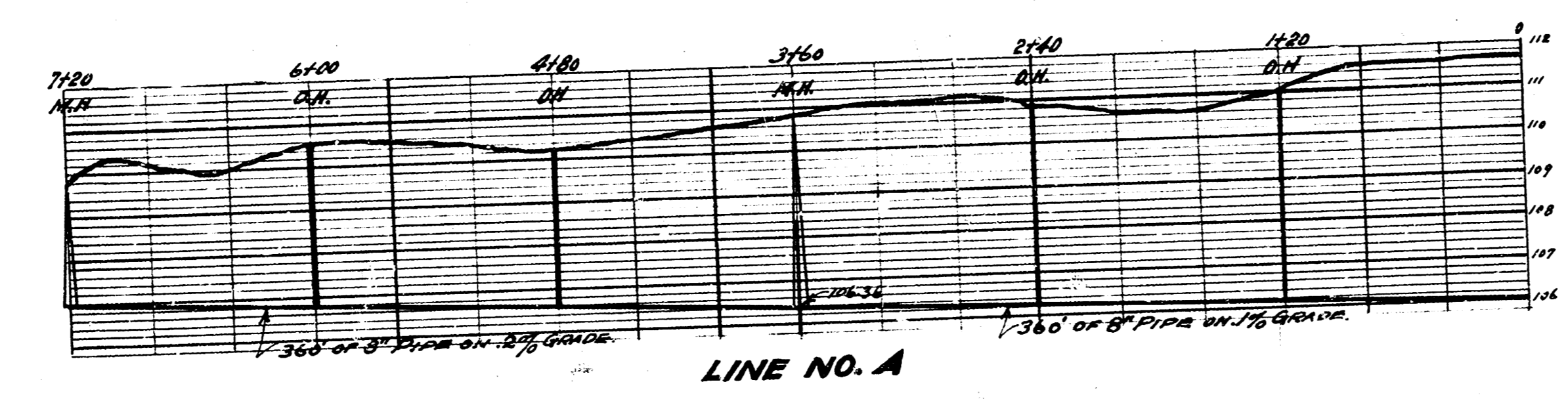
1360 Run ft of 18" Standard Vit. Salt Glazed pipe @ \$30	\$40800.00
11010 Run ft of 8" Standard Vit. Salt Glazed pipe @ \$40	\$44040.00
44 Manholes Complete @ \$125	\$5500.00
75 Obstructions 16" dia Complete @ \$29	\$2175.00
6 Check Tanks	\$1800.00
	<hr/>
Engineering 5% Total	\$7543.05
Right to Connect with Sewer Main	\$1000.00
Right of Way	\$500.00
	<hr/>
	\$77443.05



Sanitary Sewer No. 9.



SANITARY SEWER No. 9 District A
Plans & Profiles



San. Sewer
District A
No. 9
1915