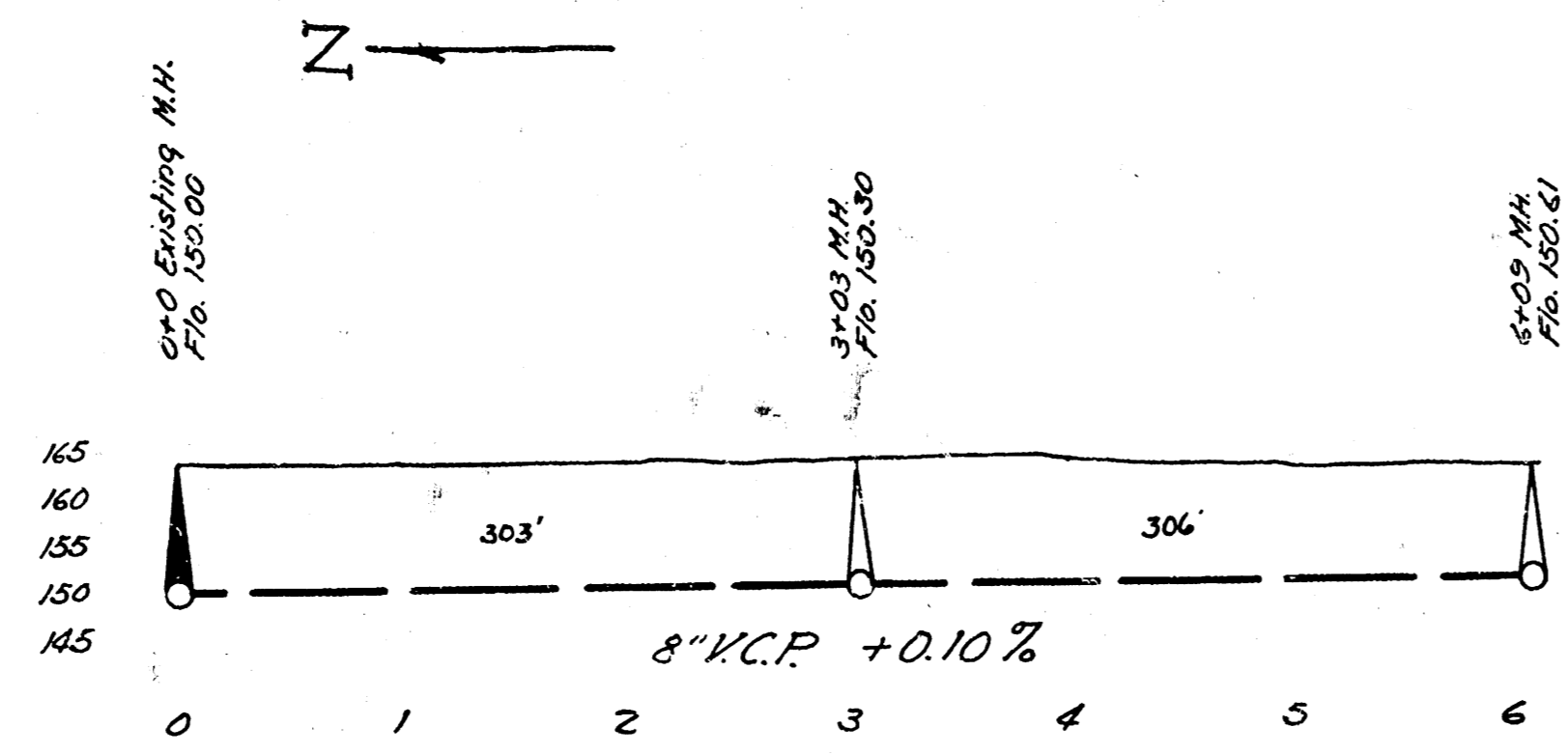


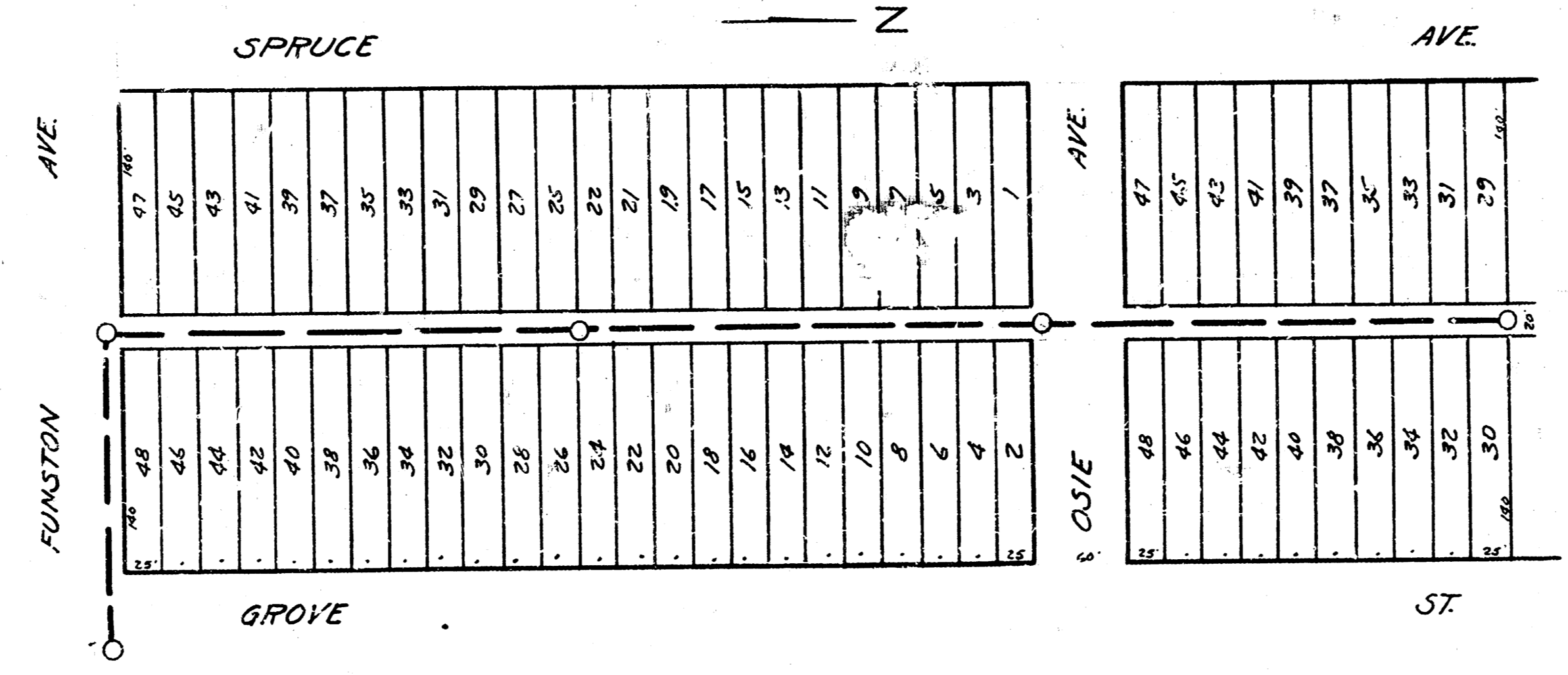
LAT. 12
 DRY CREEK SUBMAIN
 SAN. SEWER #12



B.M. Elev. 144.25. Sta. Reach in 6' on S.S. Gilbert, 15' West of E. of Hwy bet. Crestway & Terrace Drive.

ENGINEERING DEPARTMENT
 CITY OF WICHITA, KANSAS
 P.L. BROCKWAY CITY ENGINEER
 B.E. SMITH ENGINEER OF DESIGN
 MAY 1942 SCALE 1"=80'

LAT. 1, DIST. AS., S.S. #12



B.M. Elev. 100.30 NE cor. of hub guard on M.S. conc. culvert 25' E. of E. of Grove on E. Funston

