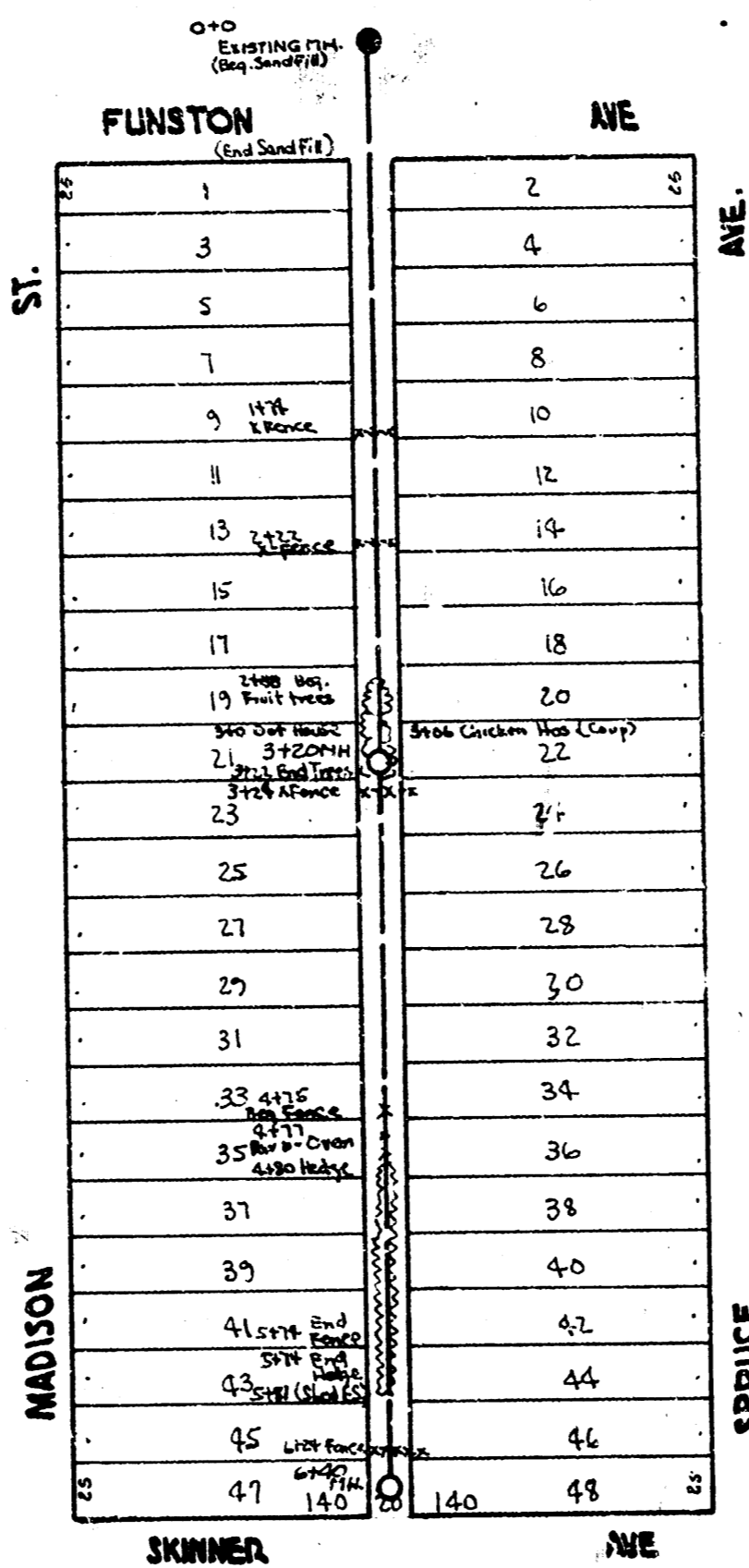
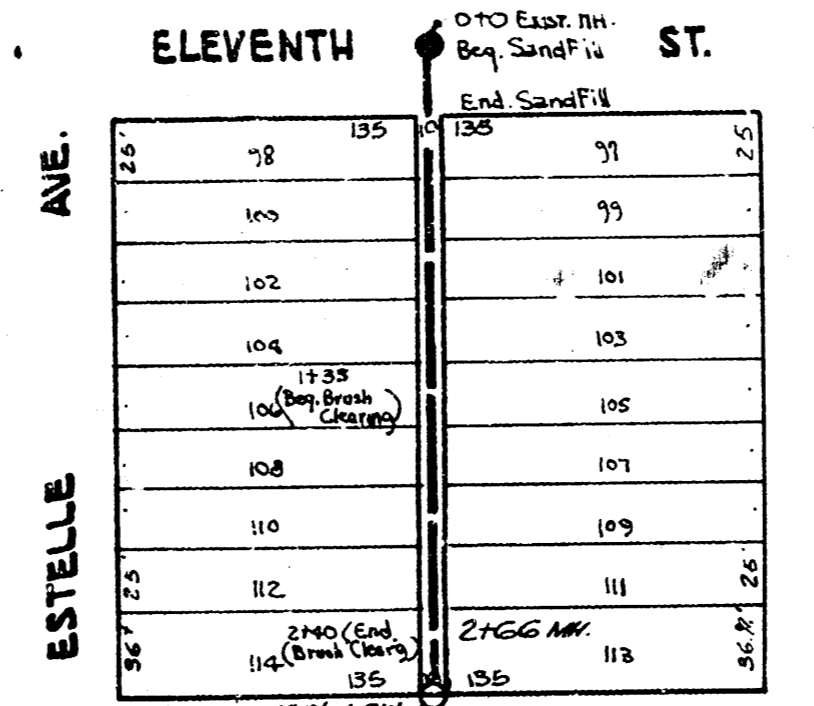


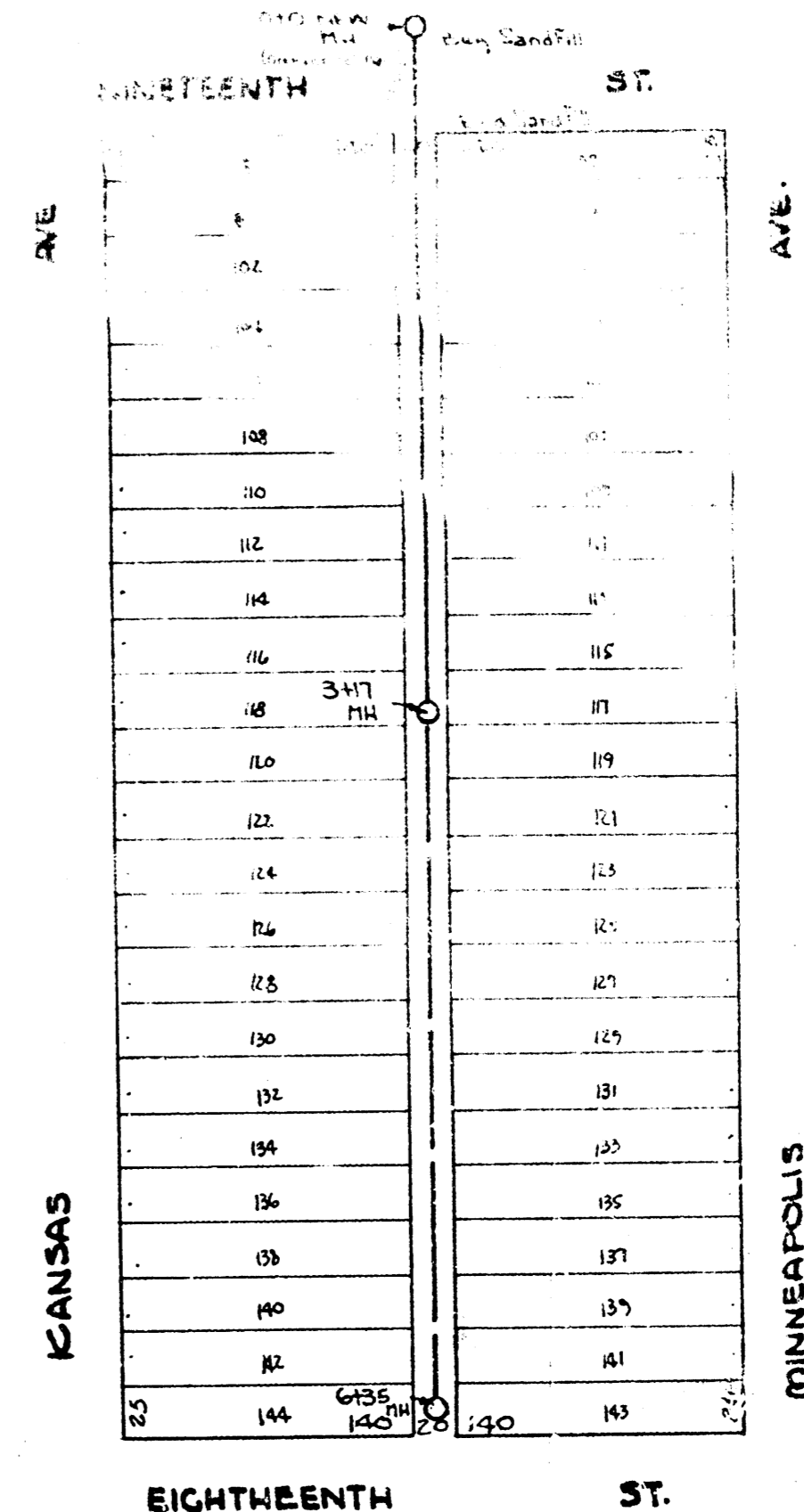
LAT. 14, DIST. R, SS# 20  
 BH. 74.52 E. Side 7.740 So. Side Scott (Cylinder base of 740)



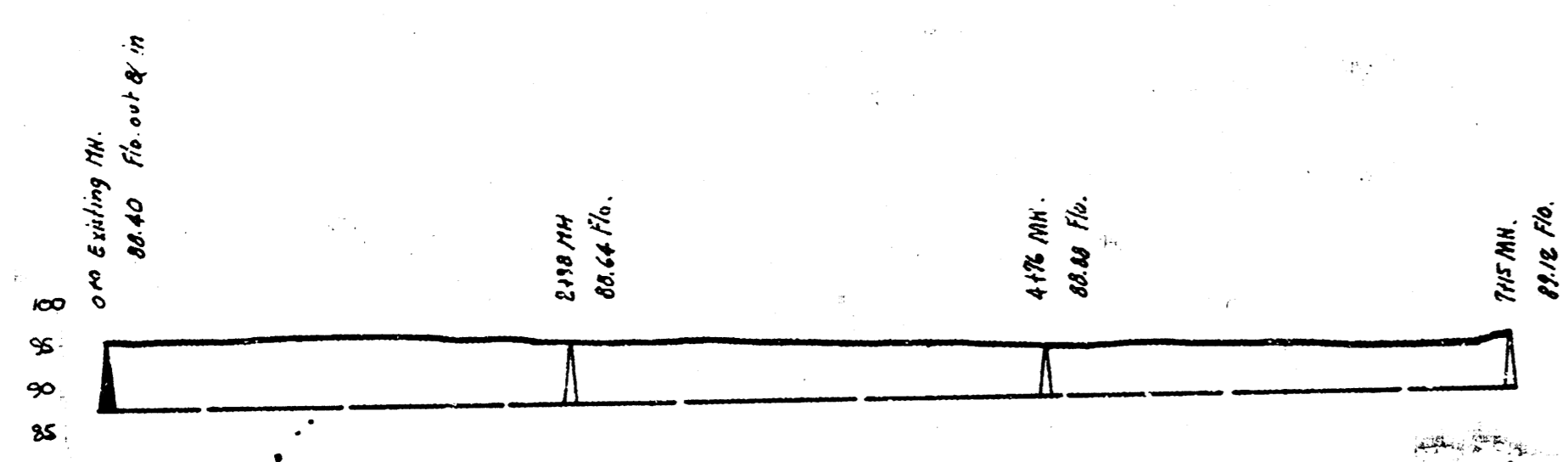
LAT. 10, DIST. AS, SS# 12  
 BH. 99.25 "G" in Globe So. End. N. 10. Spruce & Funston



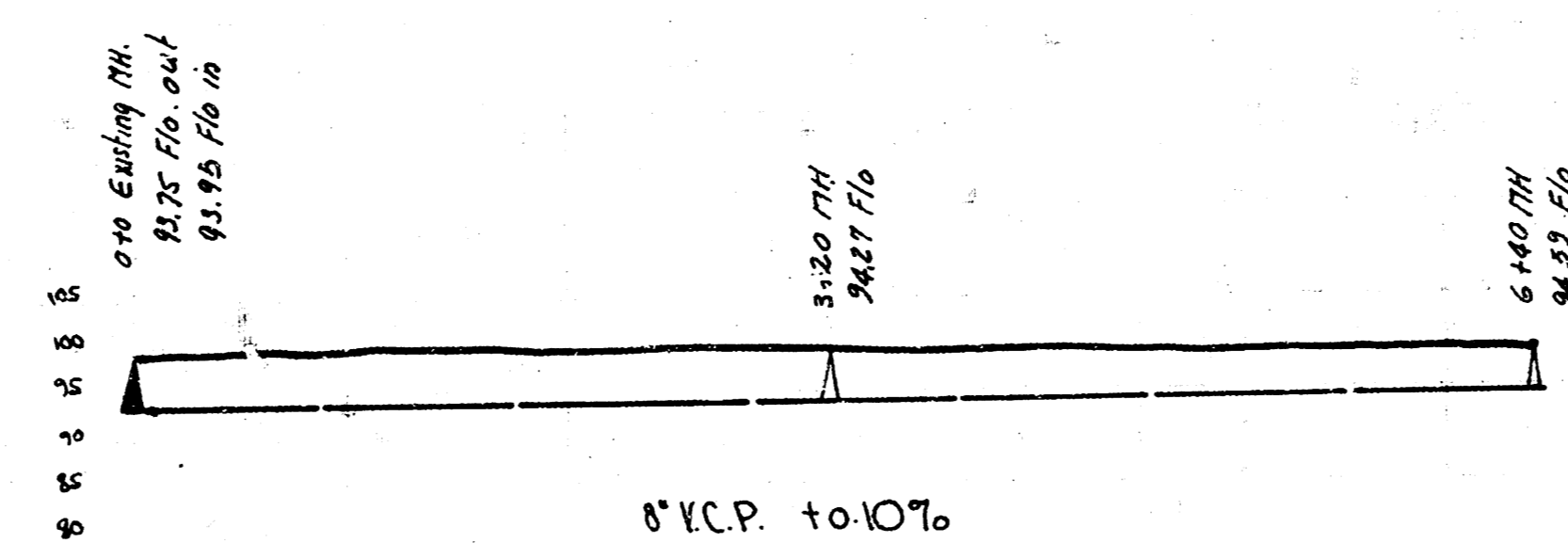
LAT. 12, DIST. E, SS# 12  
 BH. 123.11 No. Rim HI. in Eleventh Street.



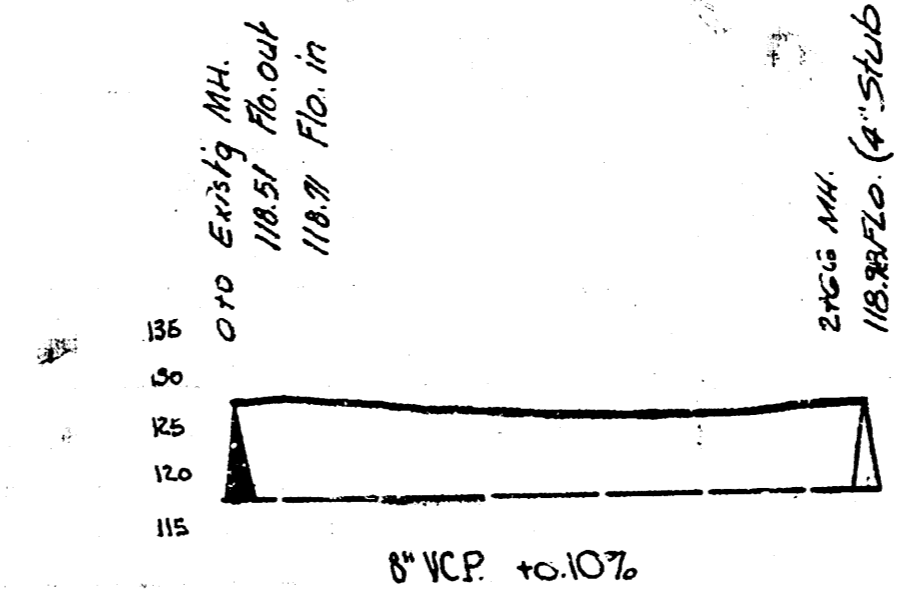
LAT. 17, DIST. T, SS# 12  
 BH. 120.23 No. Rim of So. Spruce 194. Hydraulic



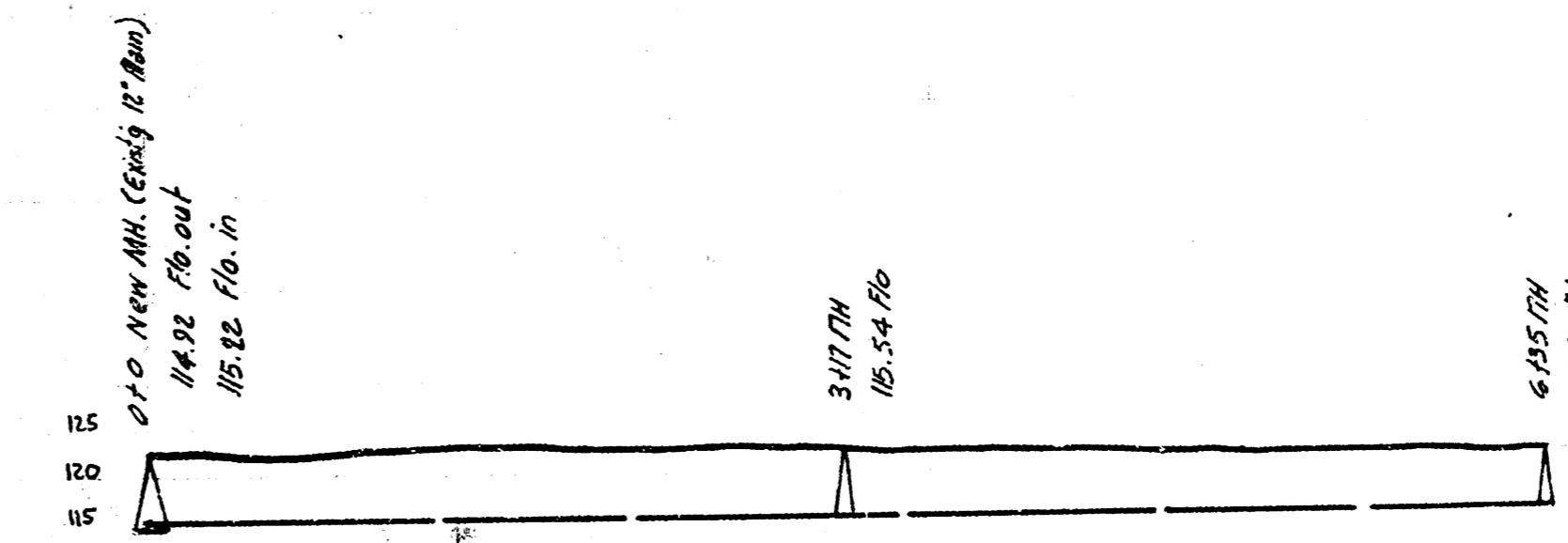
LAT. 14, DIST. R, SS# 20



LAT. 10, DIST. AS, SS# 12



LAT. 12, DIST. E, SS# 12



LAT. 17, DIST. T, SS# 12

LAT. 14, DIST. R, SS# 20 — LAT. 10, DIST. AS, SS# 12  
 LAT. 12, DIST. E, SS# 12 — LAT. 17, DIST. T, SS# 12  
 CITY OF WICHITA, KANSAS  
 L.K. WHITE - CITY ENGINEER.