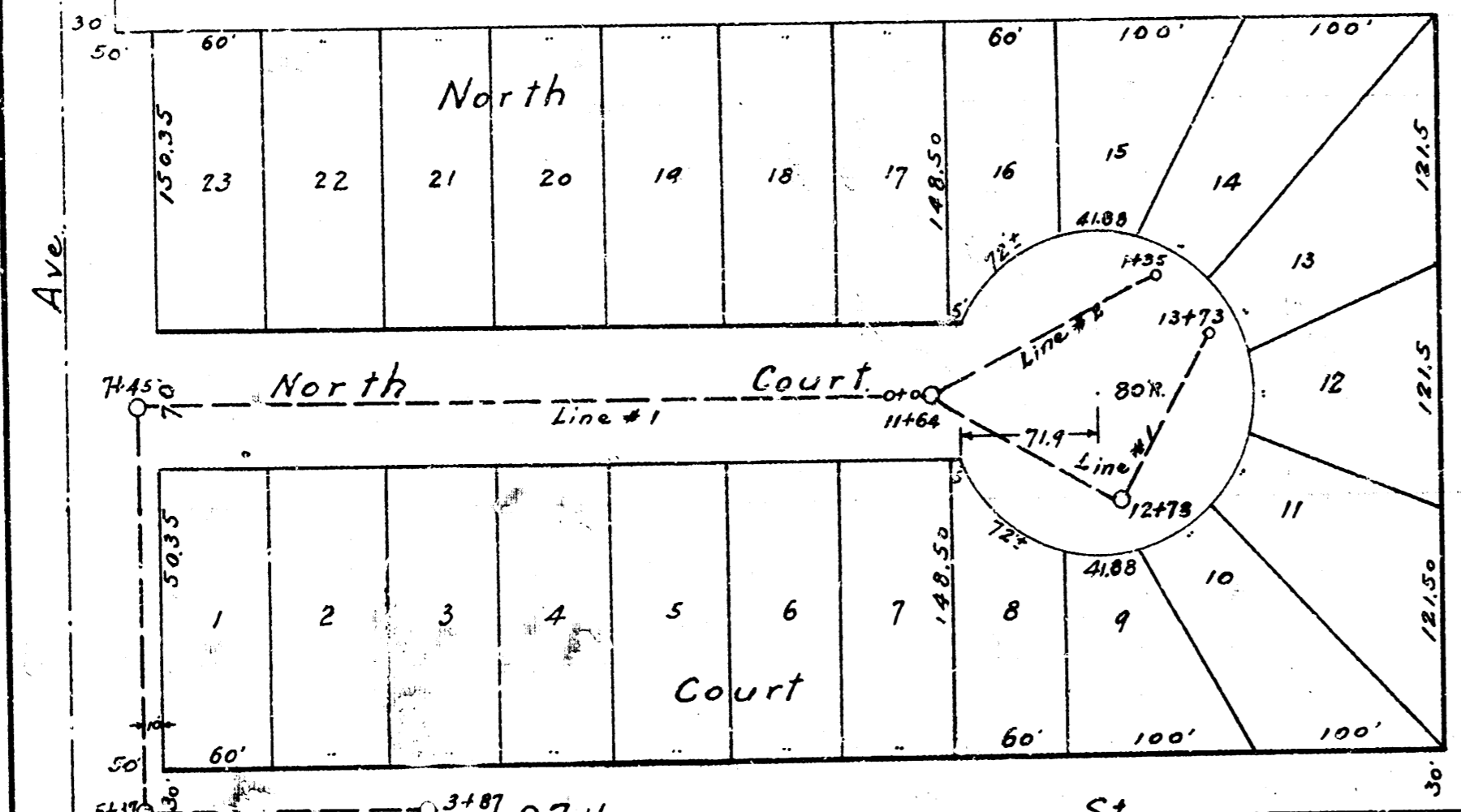


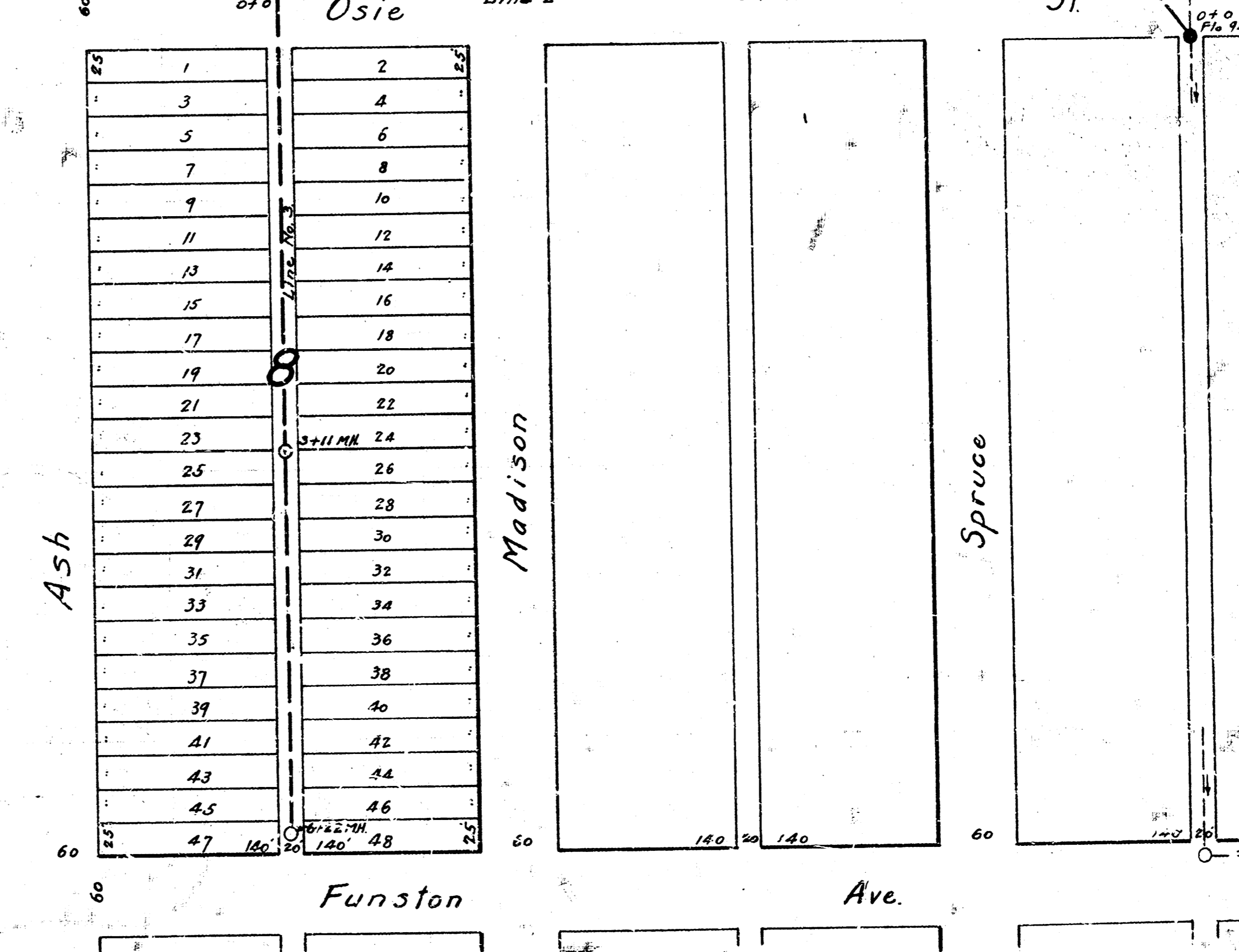
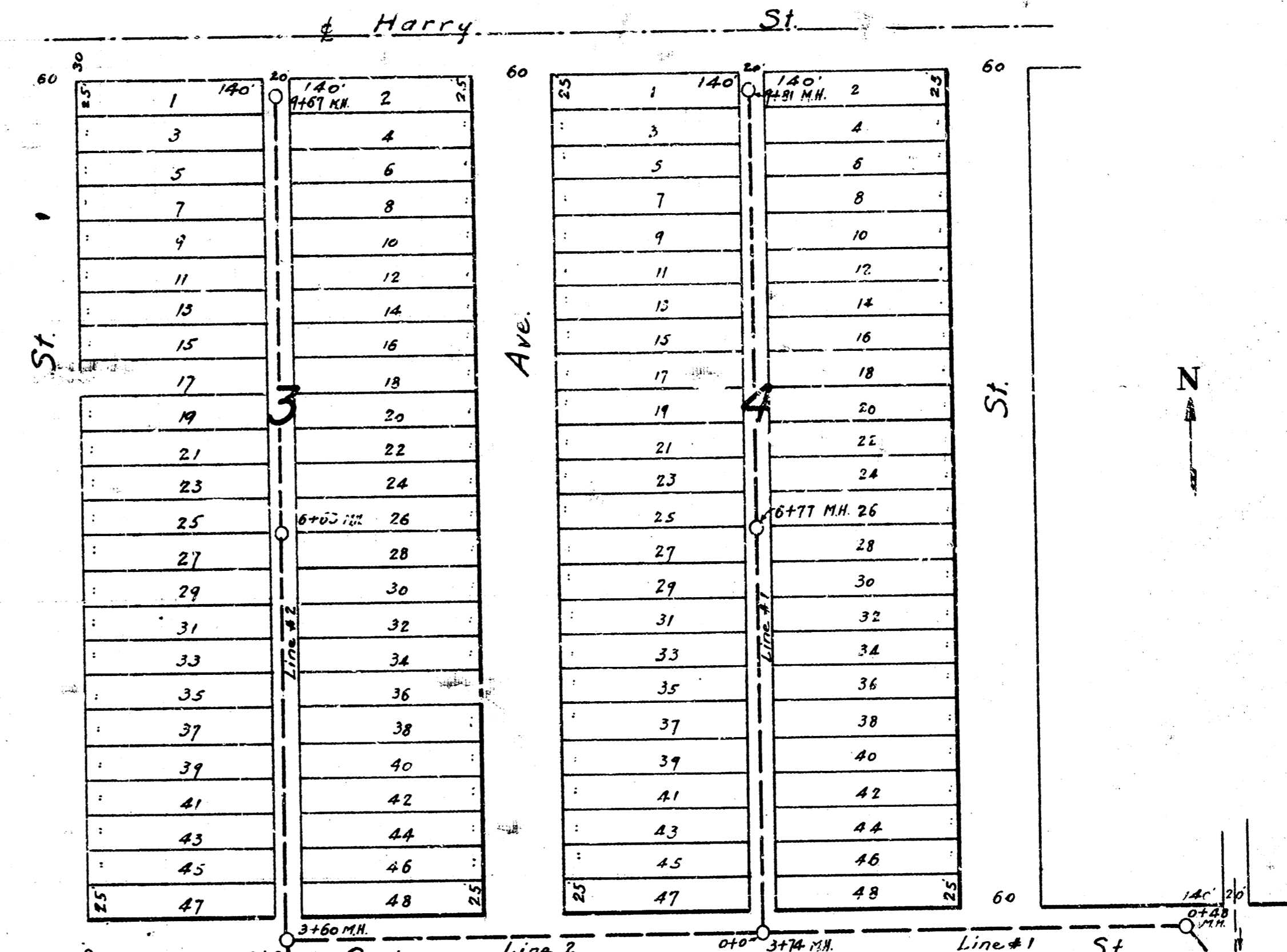
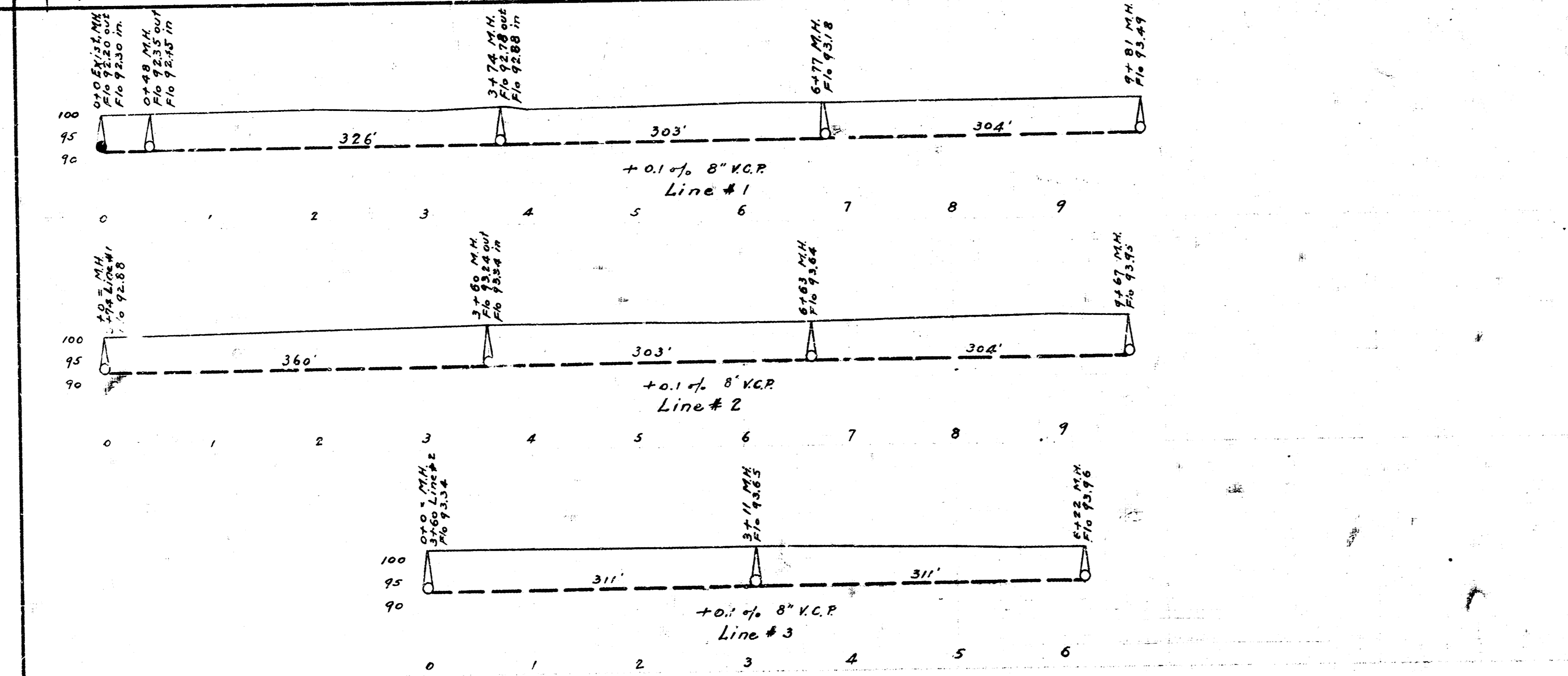
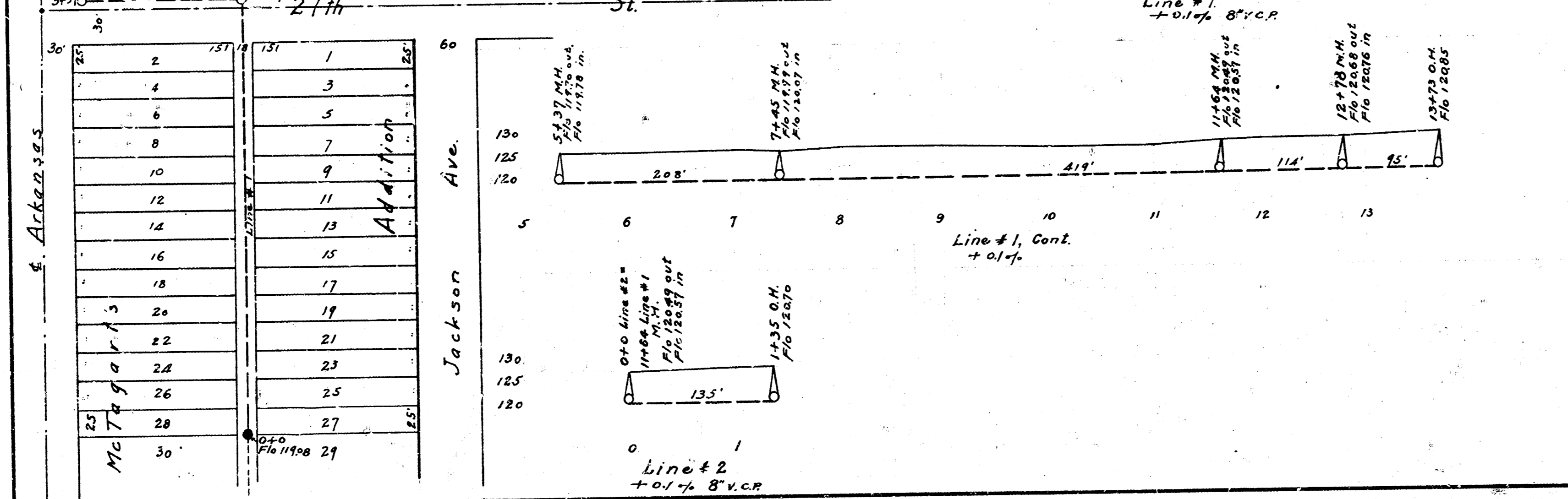
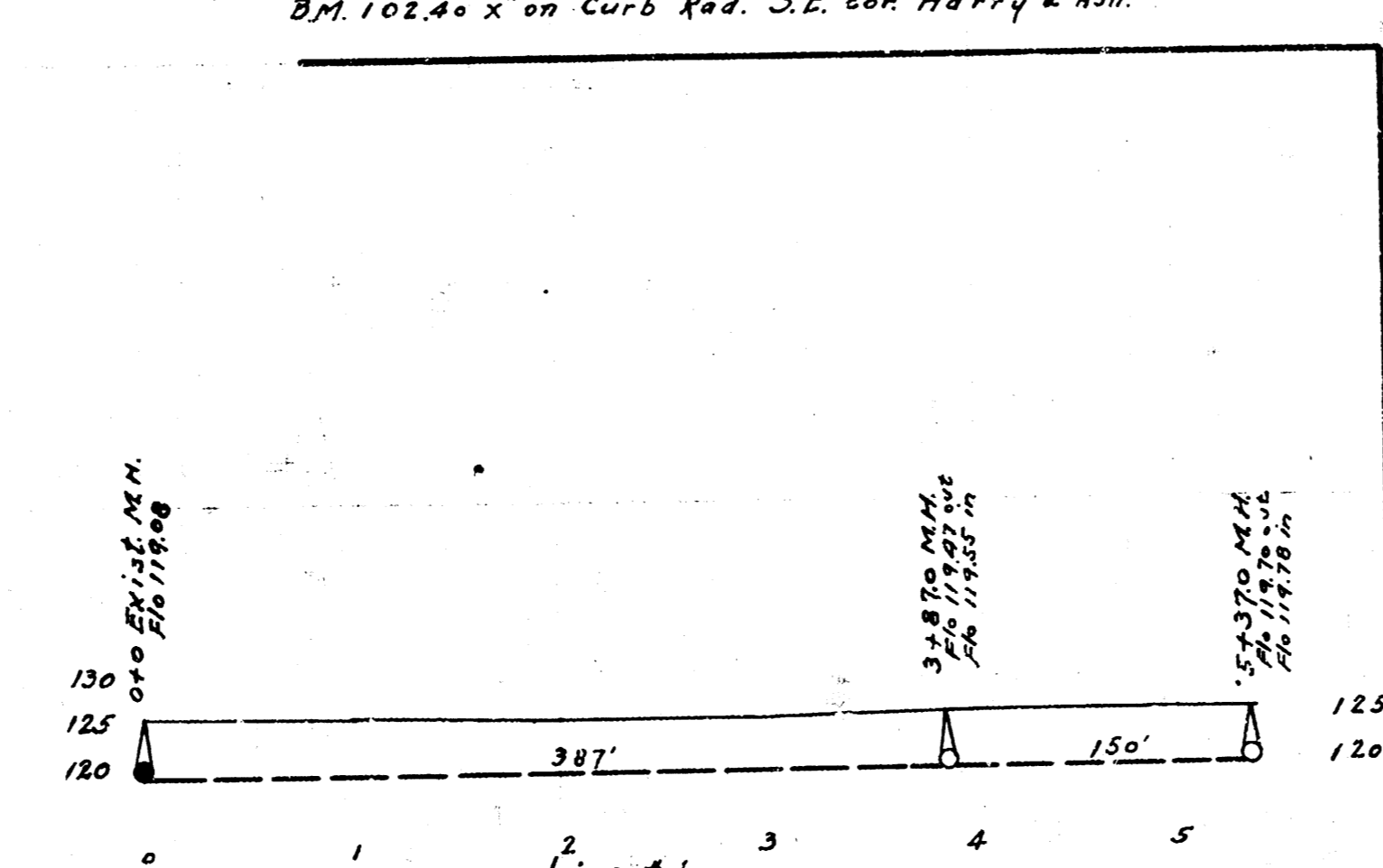
LAT. L, DIST. 7, S.S. NO. 20  
NORTH COURT ADD.

B.M. 12620 S. 1/4 M.M. Sta. 0+0 Line #1.  
B.M. 12620 N.E. Ch. on E.S. Arkansas & N.S. North Court.  
B.M. 12417 End of N. Driveway Curb ft of Mc 808



LAT. 2, DIST. AS, S.S. NO. 12  
BLOCKS 3, 4, & 8, LINWOOD PARK ADD.

B.M. 10191 5th bench in R.P. W.S. Alley bet Spruce & Madison, S.L. Harry.  
B.M. 9988 - - - T.P. N.S. Funston in alley bet Grove & Spruce.  
B.M. 10030 X on Hub Guard N.S. Conc. Culv. 25' E. of S. Grove & Funston.  
B.M. 10273 5th bench in R.P. Sta. 4+90 Line #3.  
B.M. 10240 X on Curb Rad. S.E. cor Harry & Ash.



PUBLIC SERVICE DEPARTMENT  
ENGINEERING DIVISION  
L.K. WHITE, CITY ENGINEER.  
CITY OF WICHITA, KANSAS.  
DRAWN BY C.H. MILLS.  
APRIL, 1945.