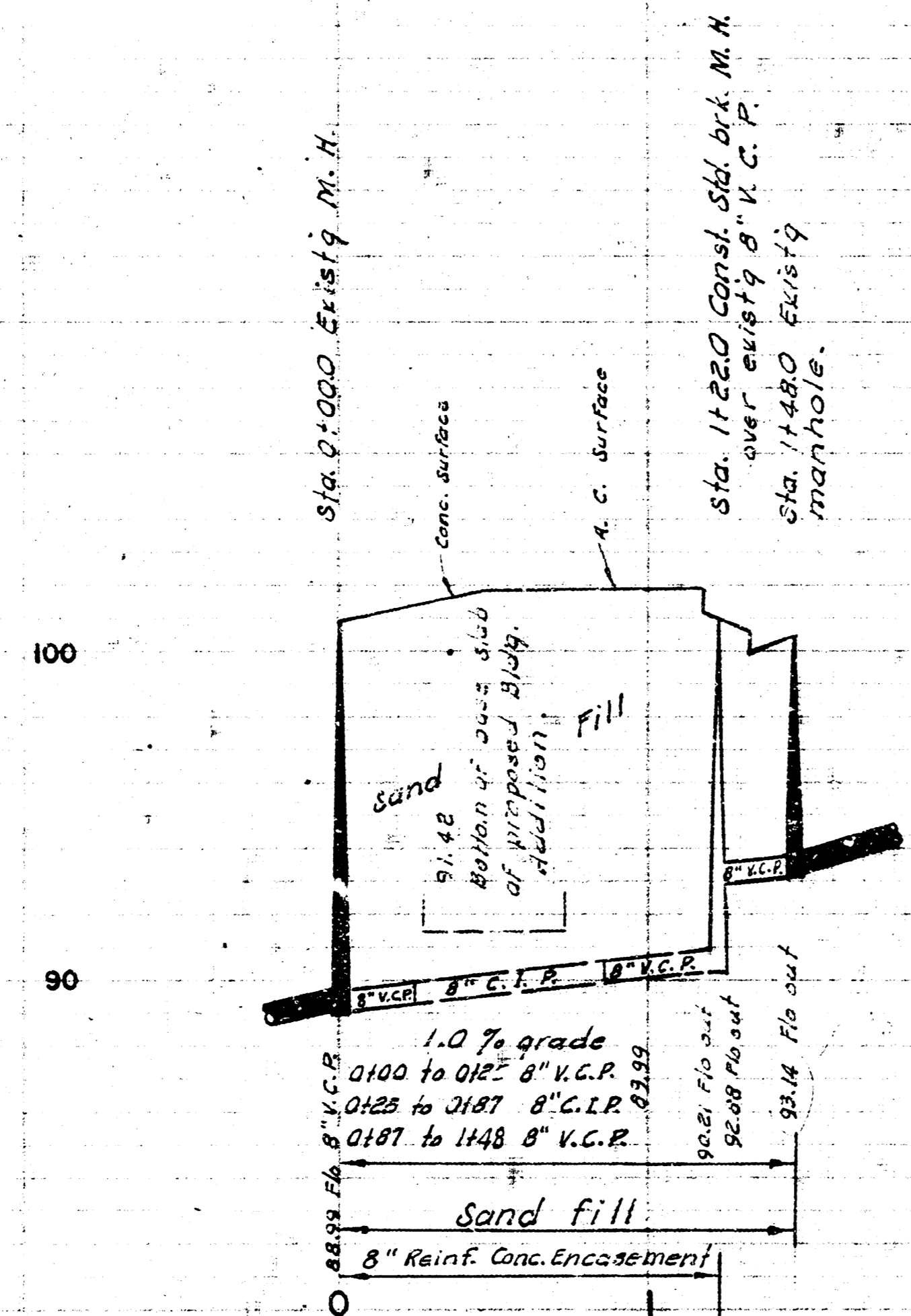
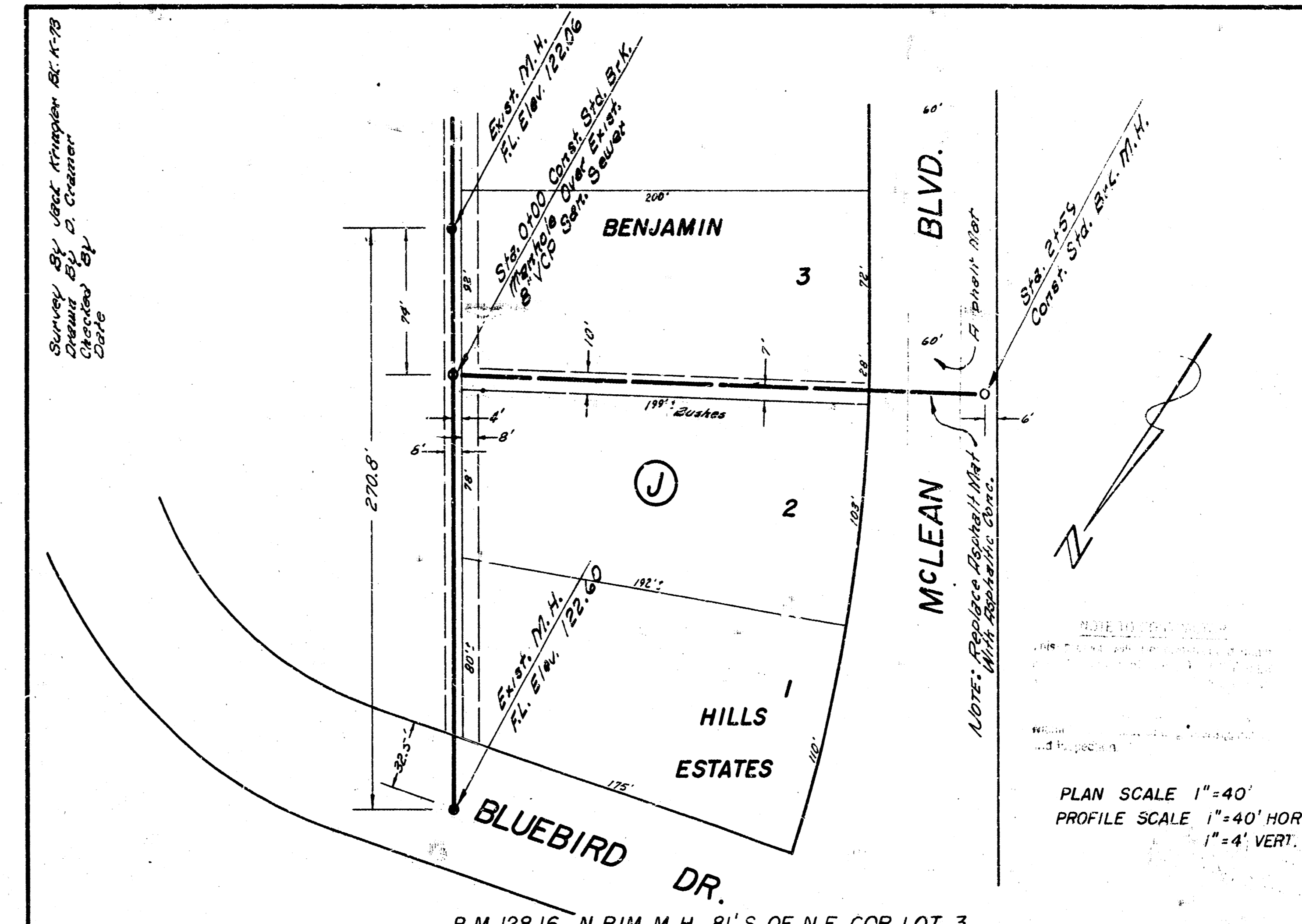


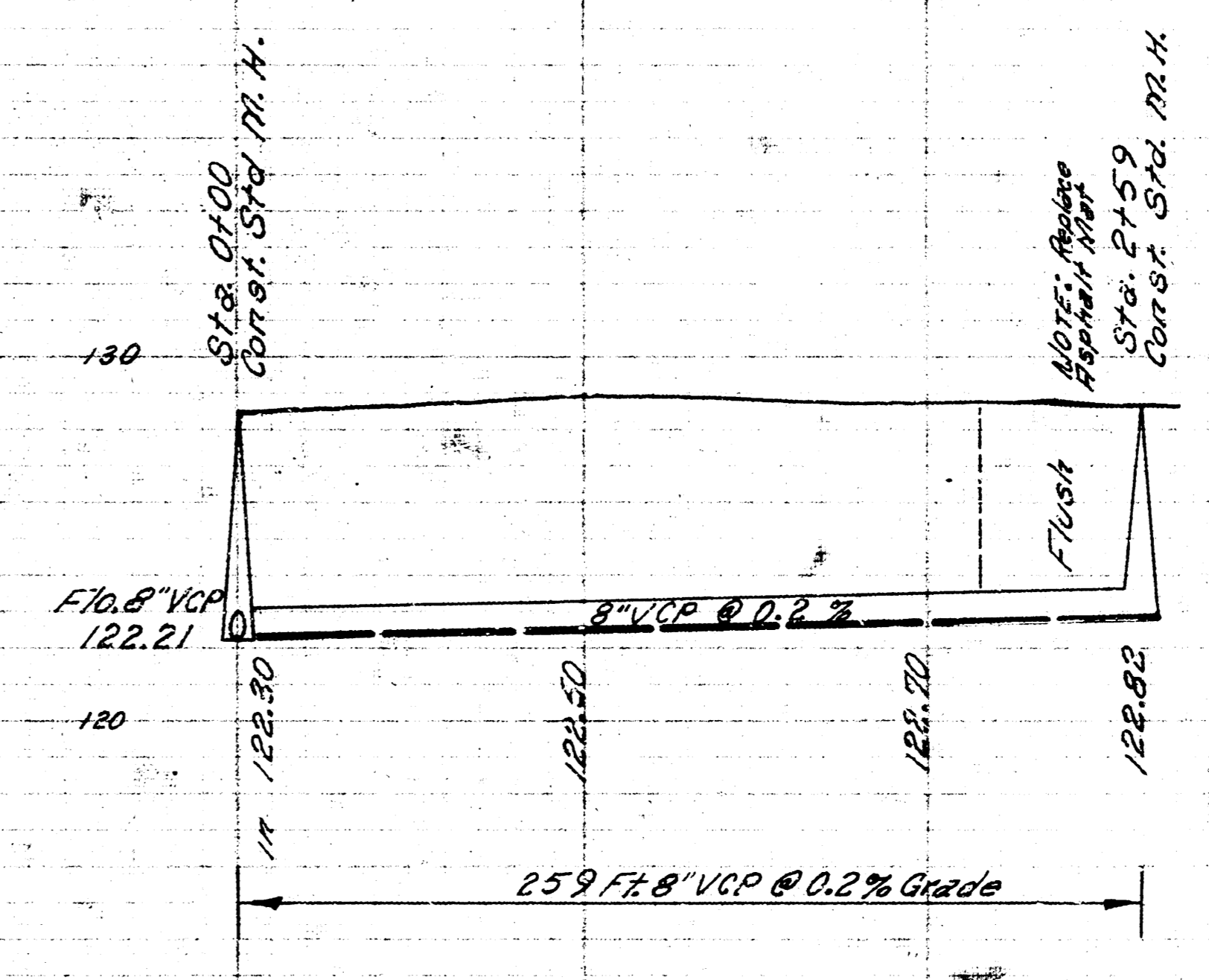
B.M. 100.47 W. Rim M.H. & Rutan 200' N. of Douglas Ave.



RELOCATION OF PART OF
DIST. B, SAN. SEWER NO. 12
FOR THE
WICHITA CLINIC
PHYSICIANS BUILDING COMPANY INC.
CITY OF WICHITA, KANSAS
B. E. SMITH CITY ENGINEER
DEC. 1962 PRIVATE CONTRACT



B.M. 128.16 N. RIM M.H. 81' S. OF N.E. COR. LOT. 3



EXTENSION TO
LAT. 59-S.S. 22
CITY OF WICHITA, KANS.
B. E. SMITH, CITY ENGINEER
PRIVATE JOB DATE