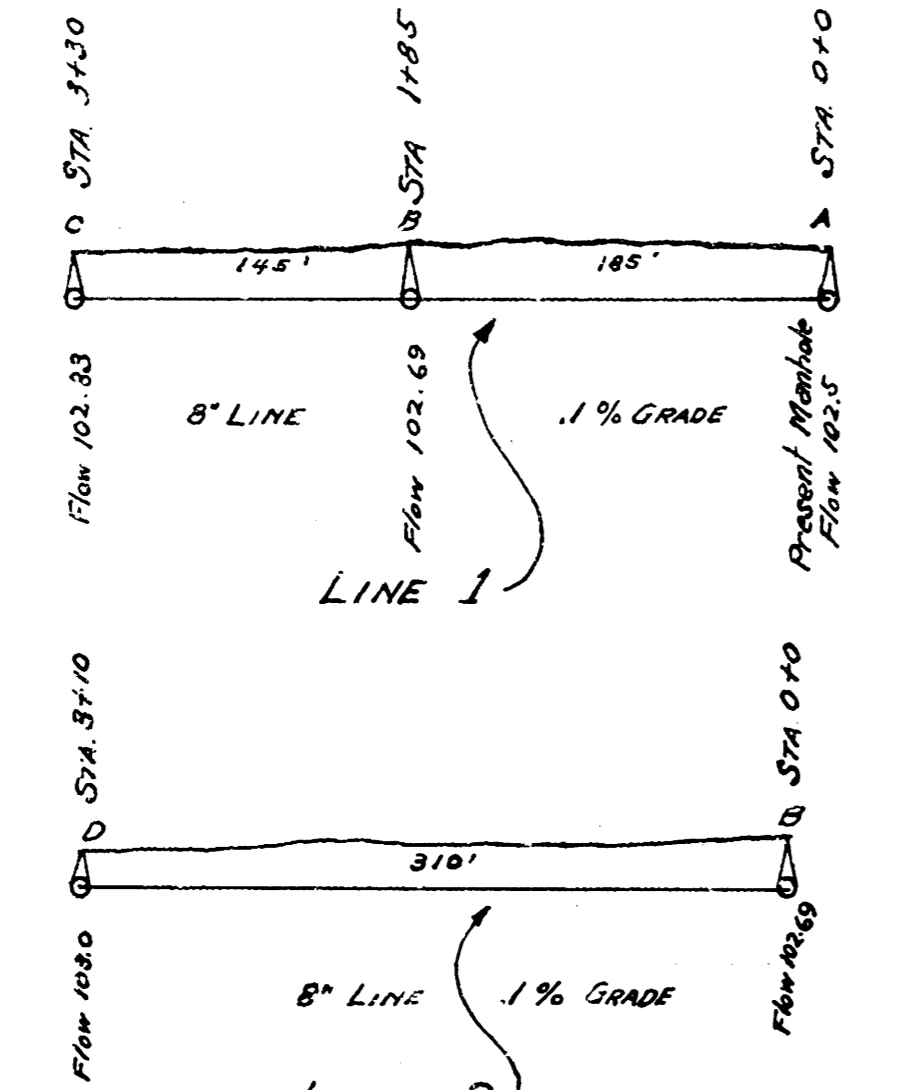
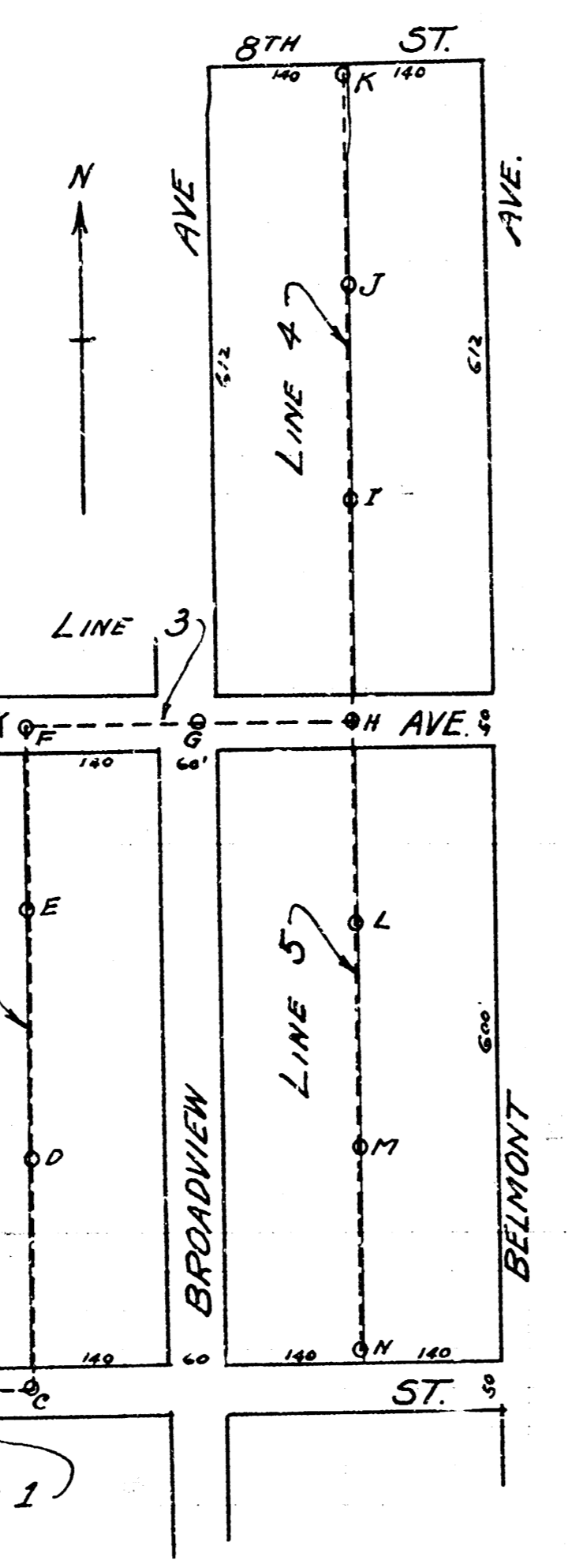


B.M. 108.39 L in Long. ft. of wall int. sq. North, NW Dodge and McCormick.

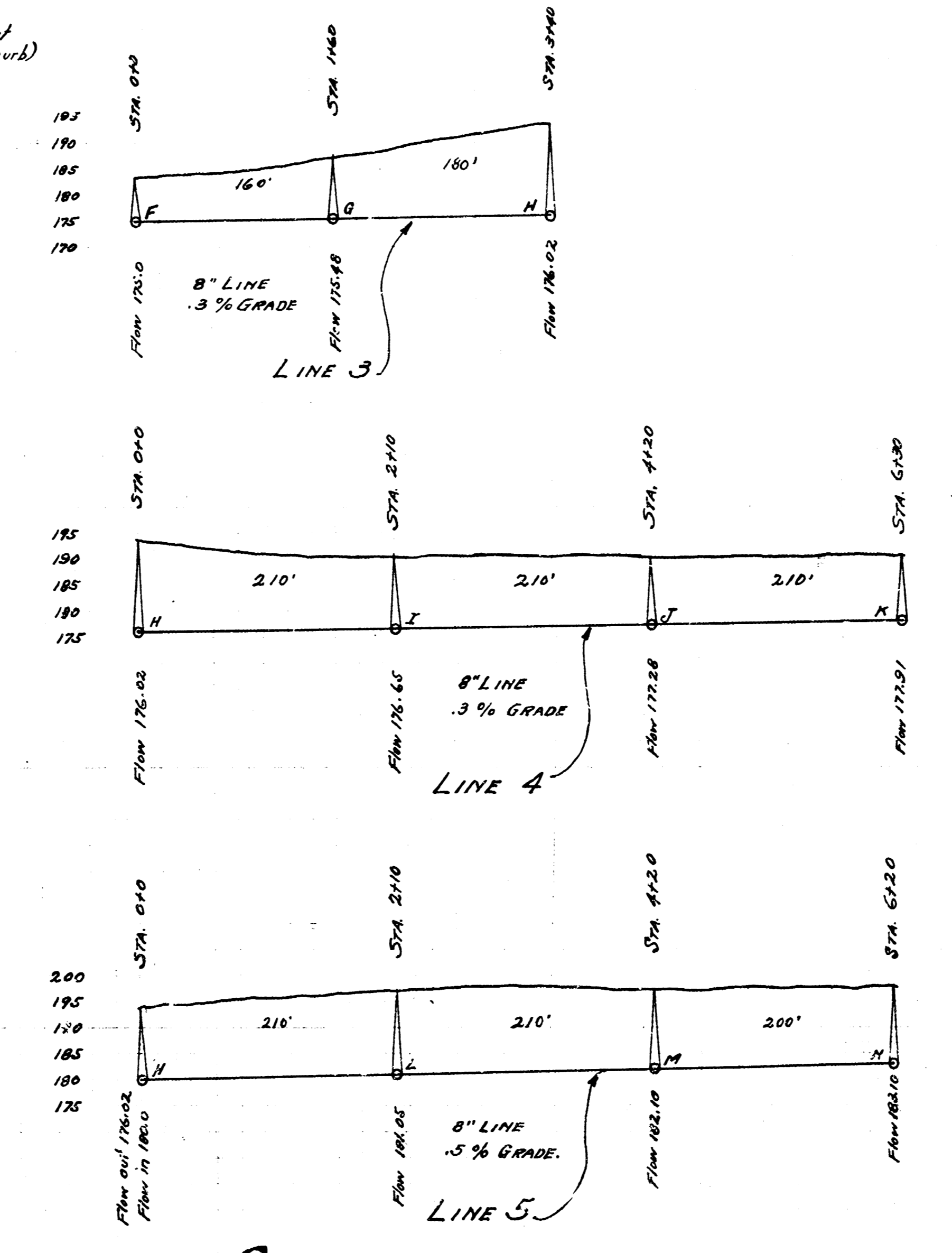
LAT. F - S.S. No. 8.



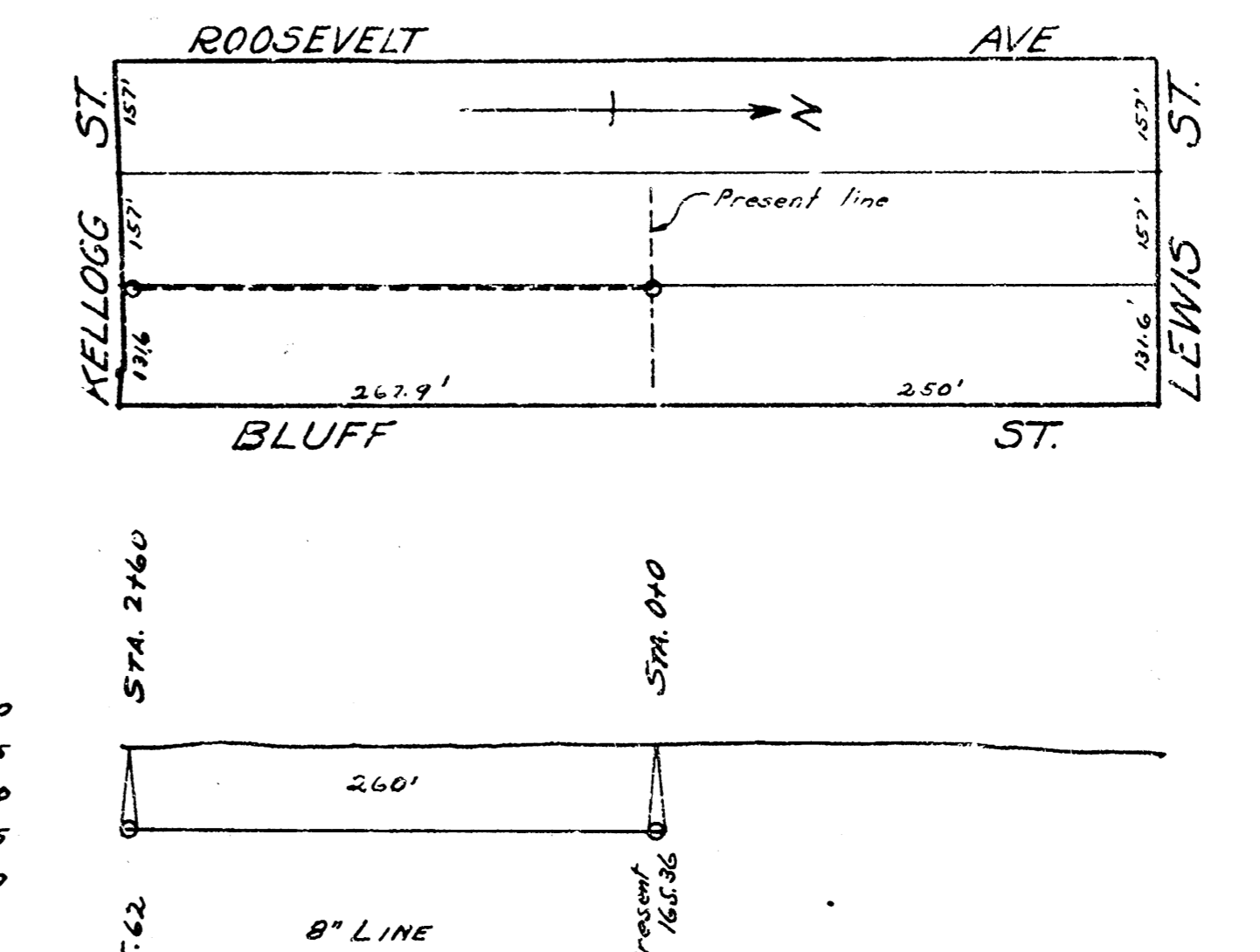
B.M. 174.52 X on end of curb of NS. of Cook, on Bluff. (64 curb)



LINES 1 AND 2
LAT. Y - DIST. D - S.S. No. 12

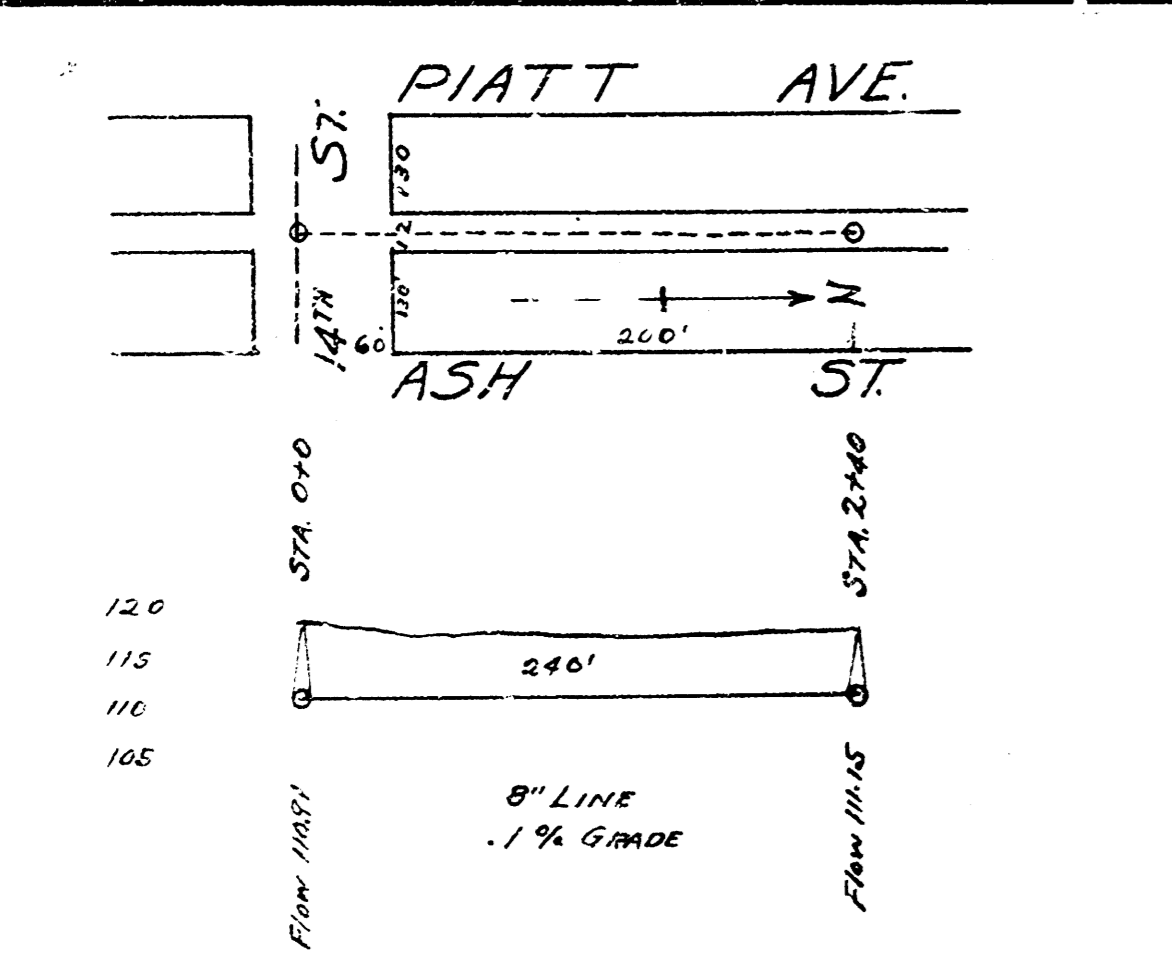


LINES 3, 4 AND 5
LAT. 2 - DIST. D - S.S. No. 12



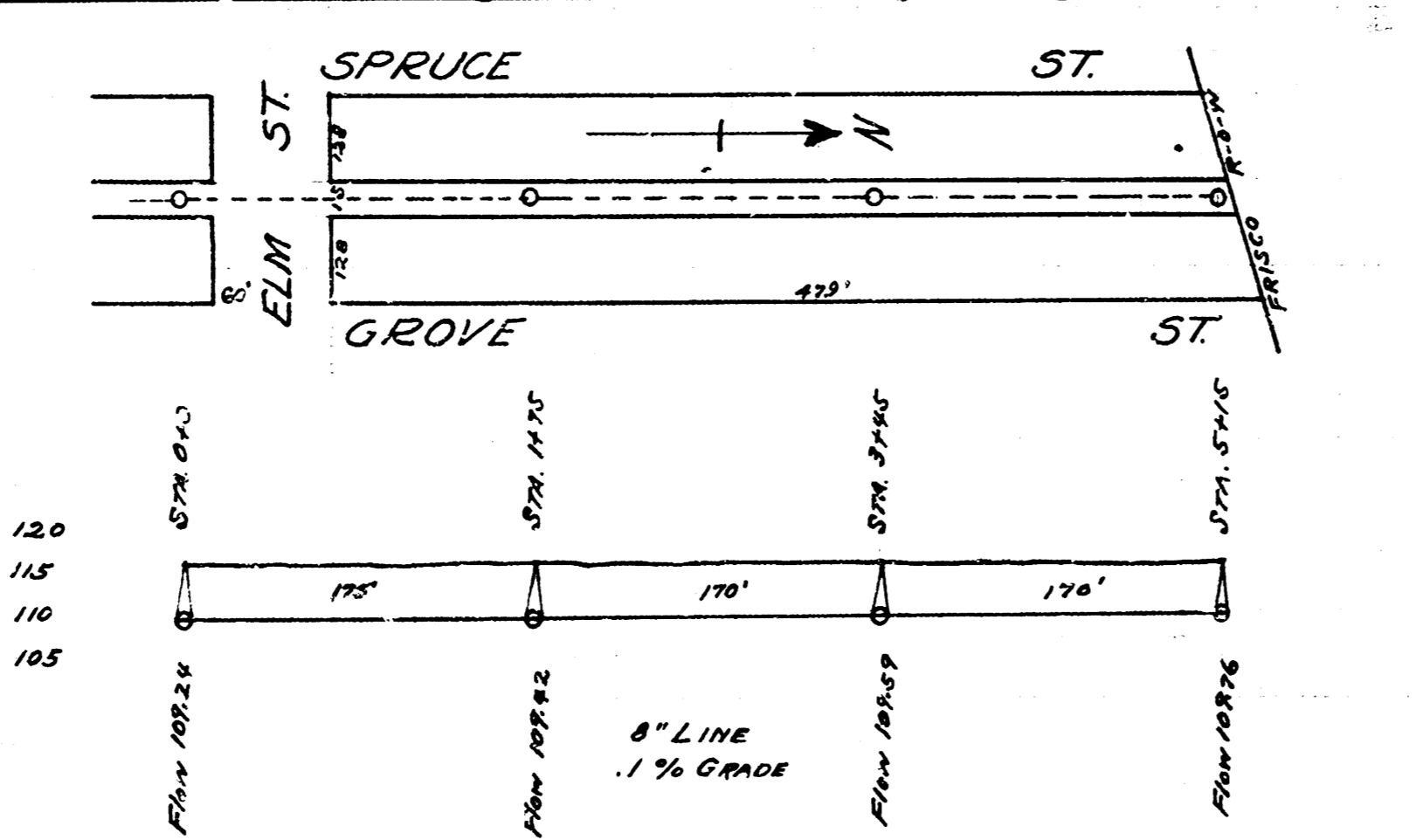
B.M. 171.74 Iron in thimble N.E. cor. Roosevelt & Lewis

LAT. 27 - DIST. A - S.S. No. 12



B.M. 118.06 D in Dixon, back of walk N.E. cor. Ash and 14th

LAT. K - DIST. 0 - S.S. No. 12.



B.M. 116.20 H in Hurst, ctr. of W. South - SW. cor. Grove and Elm.

LAT. Z - DIST. D - S.S. No. 12