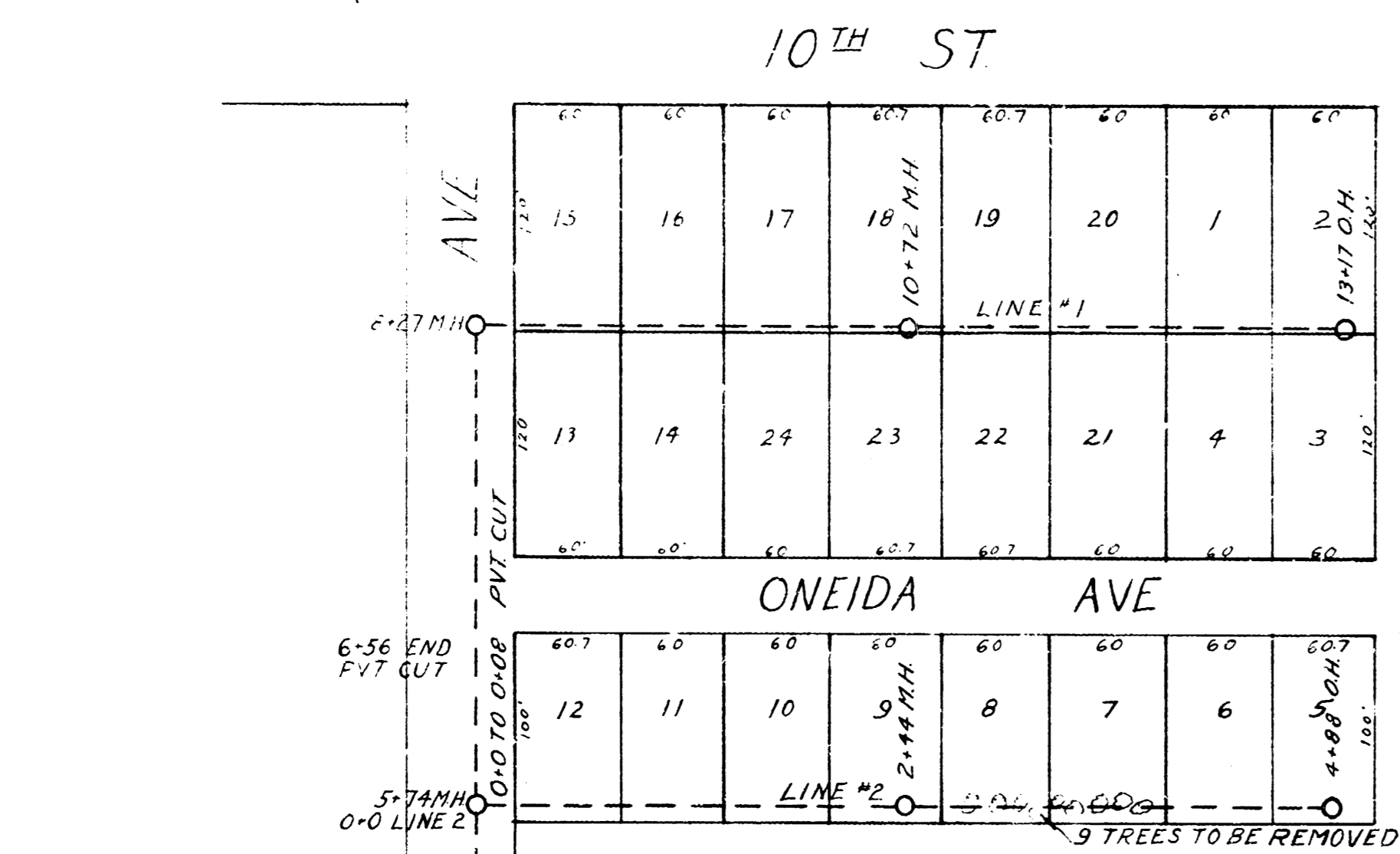
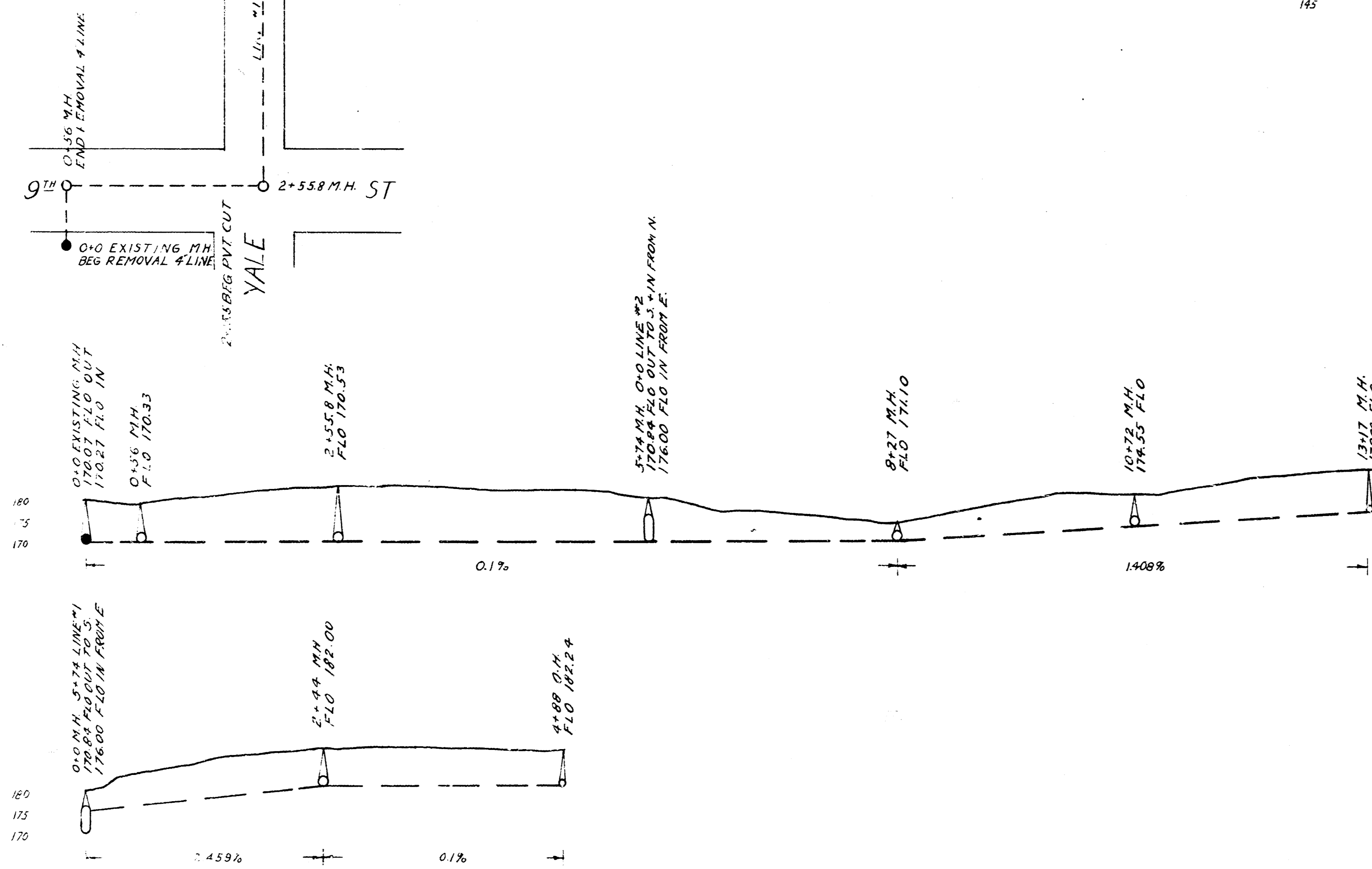


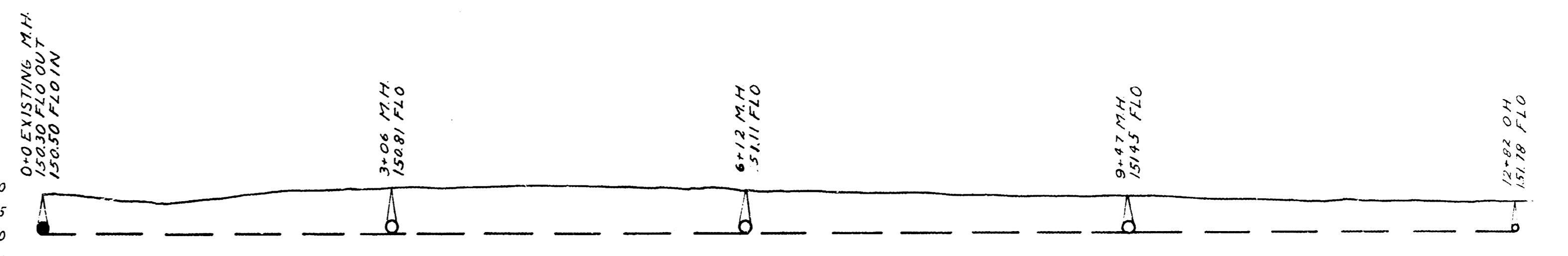
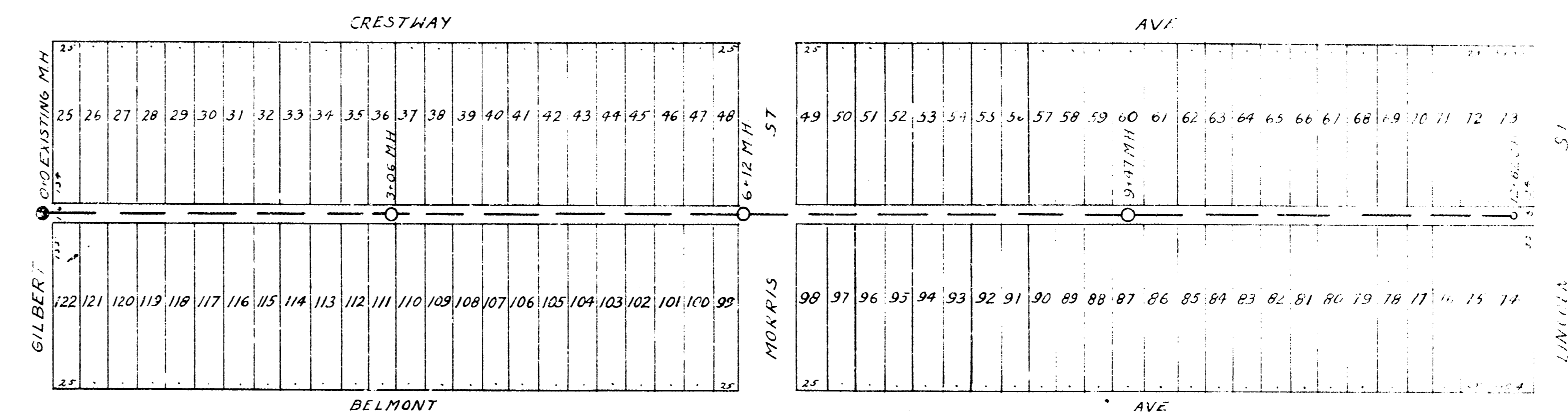
LATERAL 9 DIST D SS #12



B.M. 19320 STEPBENCH IN PP ONE S. ROOSEVELT - N.L. ONEIDA
 B.M. 17452 STEPBENCH IN COR POST S.W. COR 10th - YALE
 B.M. 17940 COR. IRON N.E. COR ONEIDA - YALE
 B.M. 18636 S.W. COR CONC. STEP HOUSE #1002 N. ROOSEVELT



LAT 19 DRY CREEK SUBMAIN SS #12



B.M. 15790 'X' ON E. CH. BELMONT - N.L. GILBERT
 B.M. 16045 20' SPIKE IN E.S. POWER POLE E.S. ALLEY - S.S. MORRIS
 B.M. 15879 S.W. COR CONC. PORCH, HOUSE # 852 BELMONT

CITY OF WICHITA, KANSAS
 DEPARTMENT OF SERVICE
 L.K. WHITE, CITY ENGINEER
 APRIL 1946