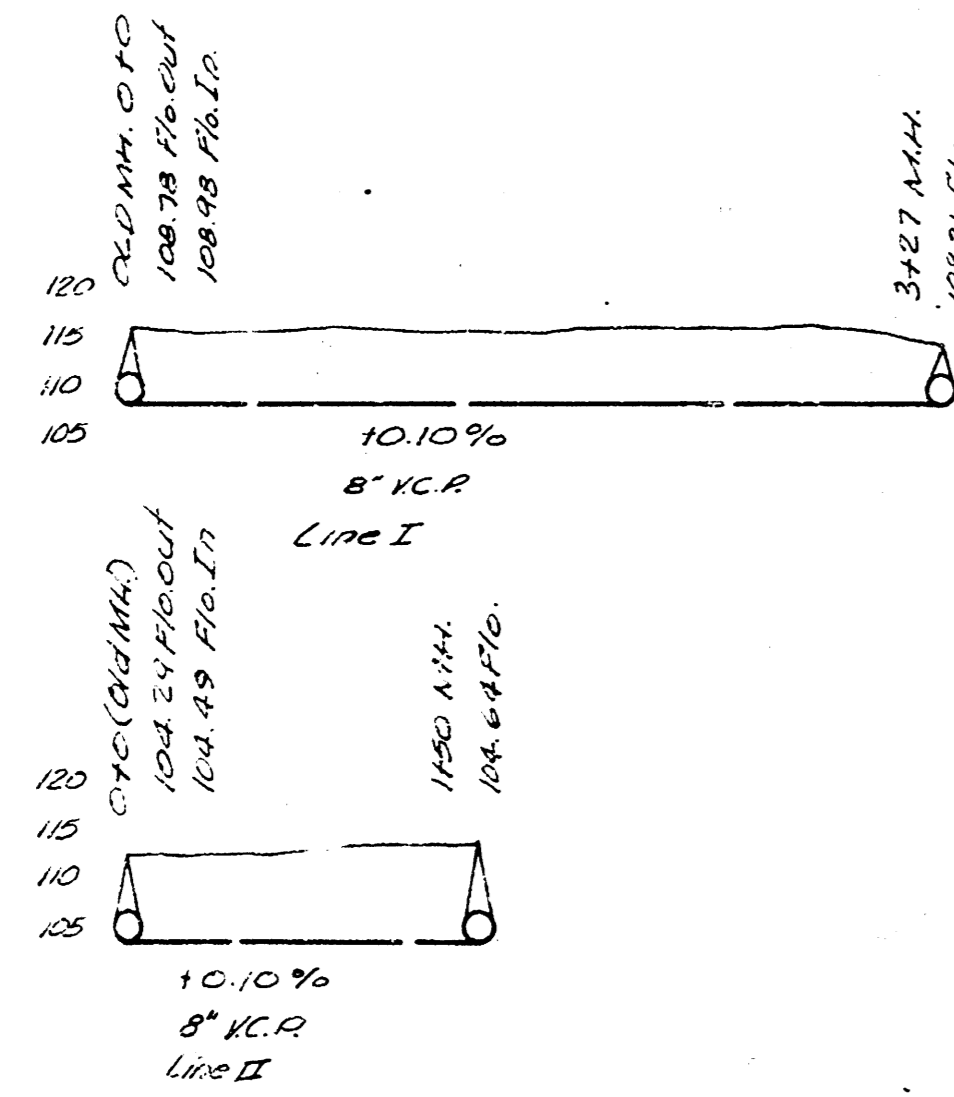
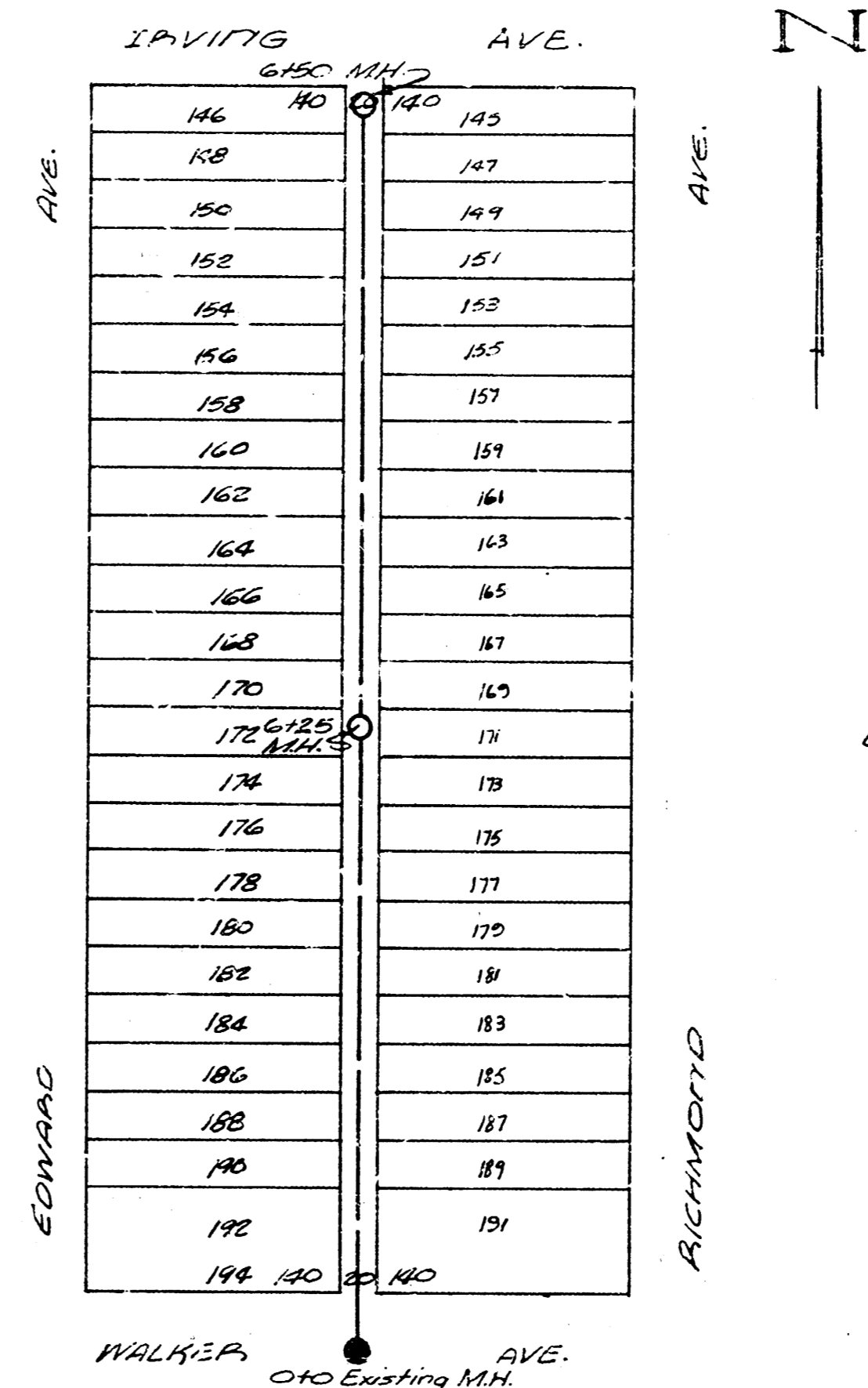


LAT 11, DIST D, MAIN 12

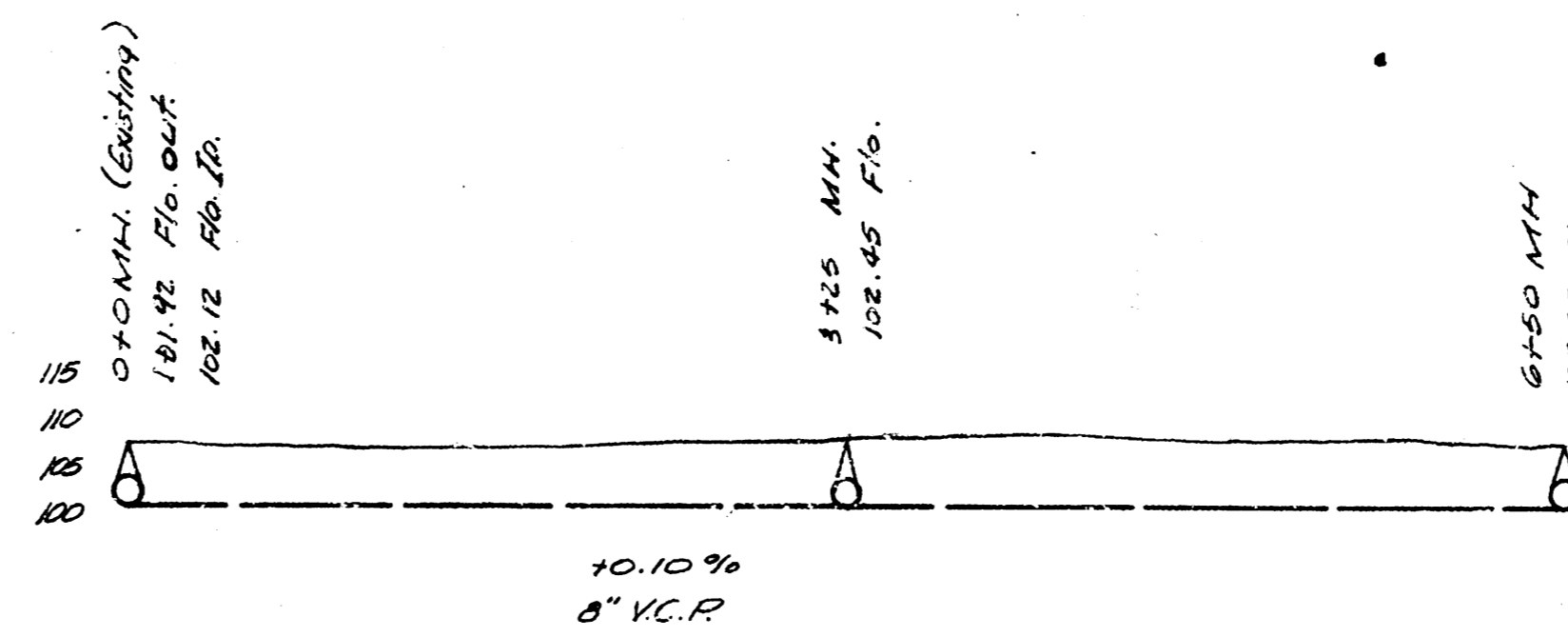


B.M. 116 90 17 Run MH (Sta. 010 Line I)
 B.M. 118 63 17 Run MH (Sta. 010 Line II)

OBJECTS TO BE REMOVED & REPLACED
 Line I
 27' Spire; Flower Garden
 Line II
 28' of Lattice Fence & 10' of Wire Fence on S.E. Murdock



LAT 3, DIST B, MAIN 21



LAT 11, Dist D, Main 12
 LAT 3, Dist B, Main 21
 CITY OF WICHITA, KANSAS
 L.A. WILSON City Engineer
 May 1948 Proj 170.