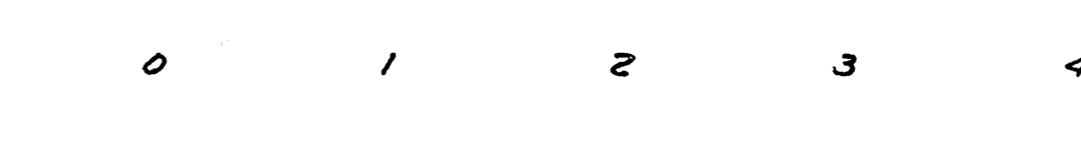
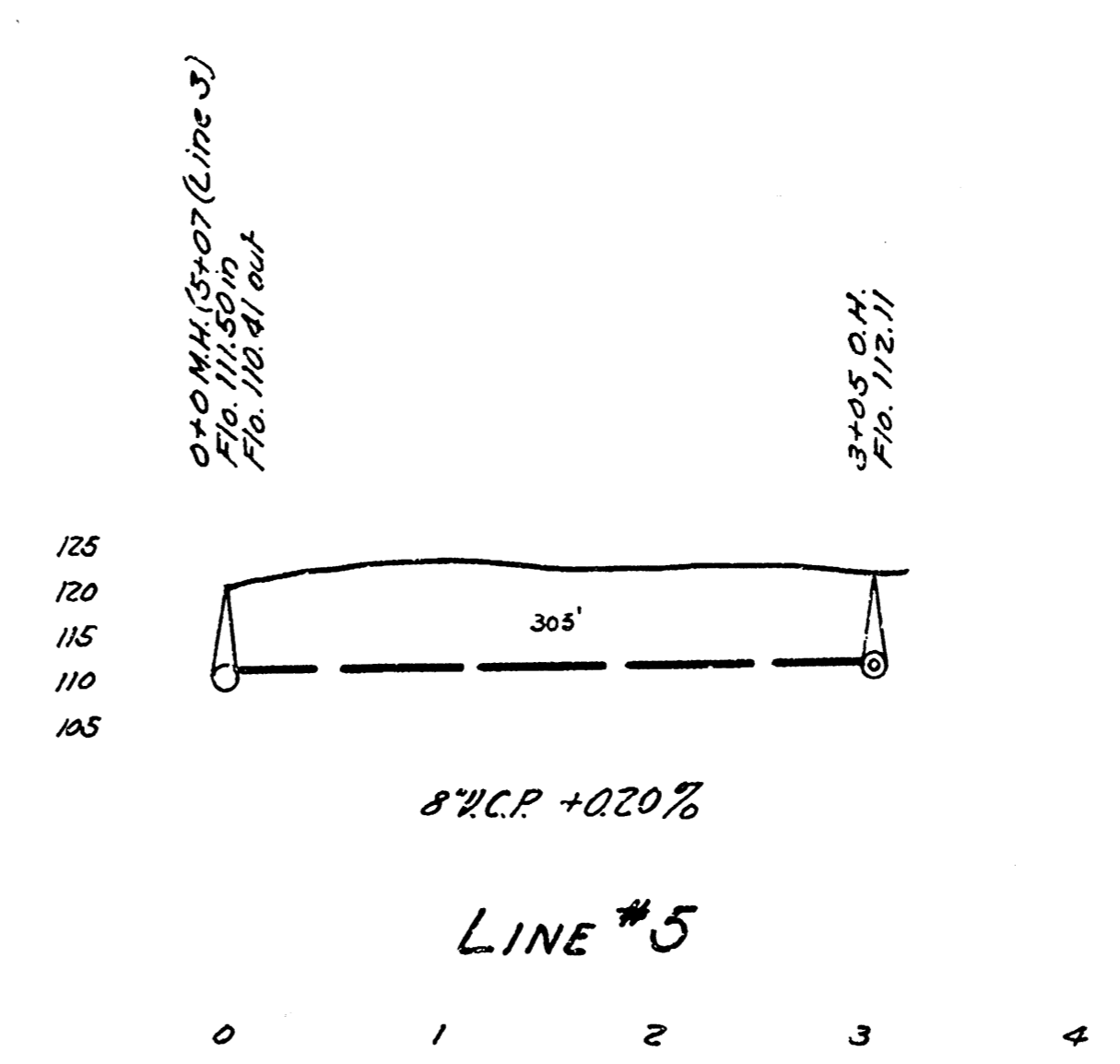
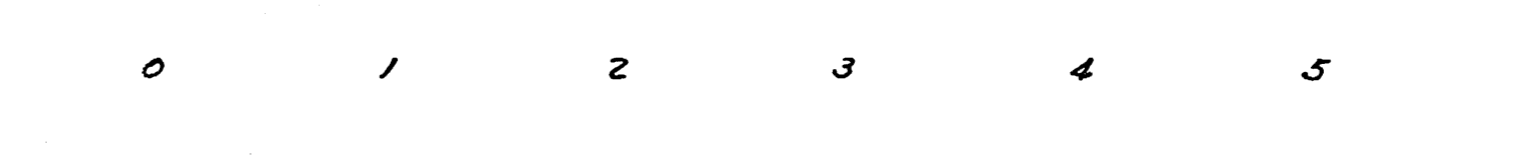
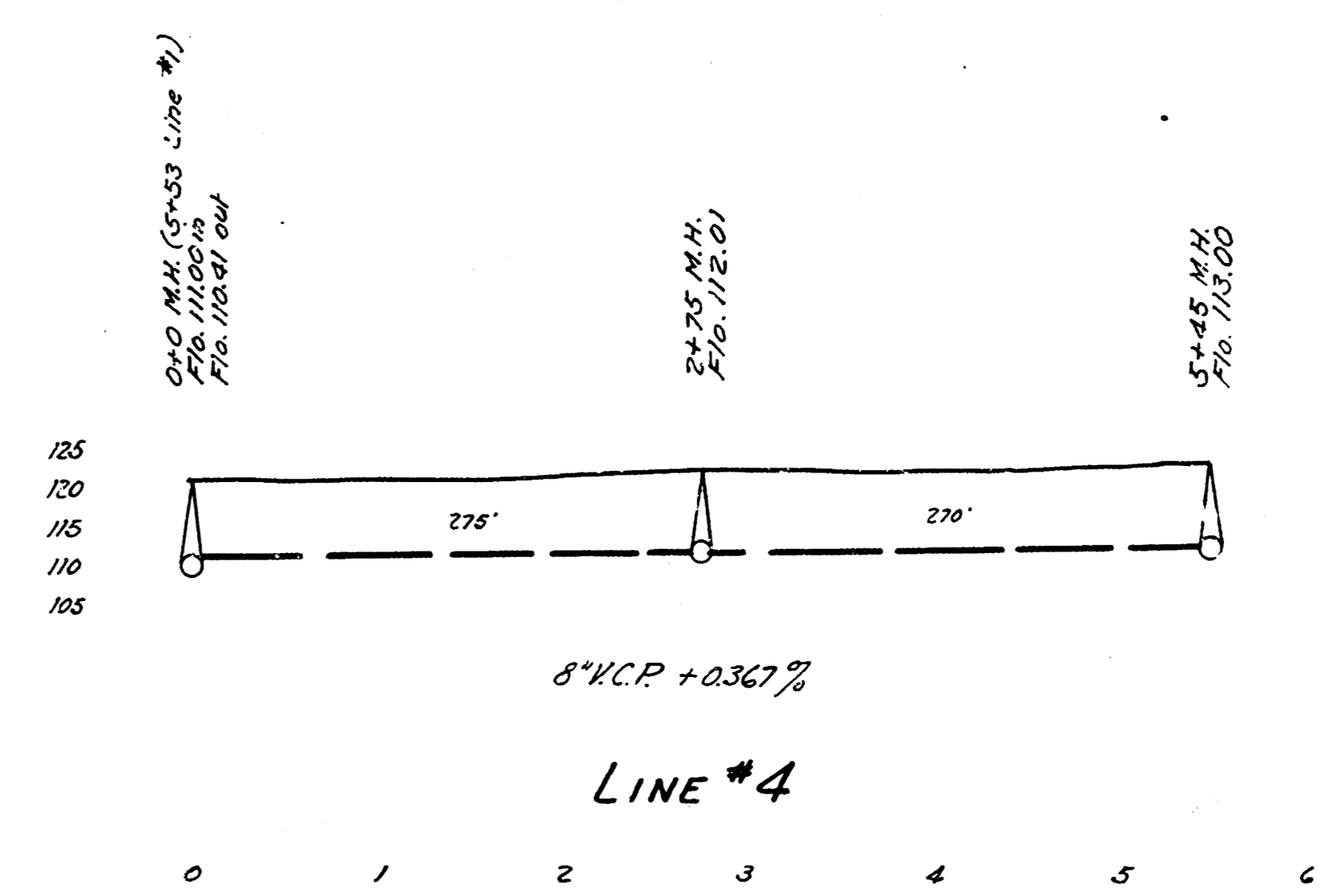
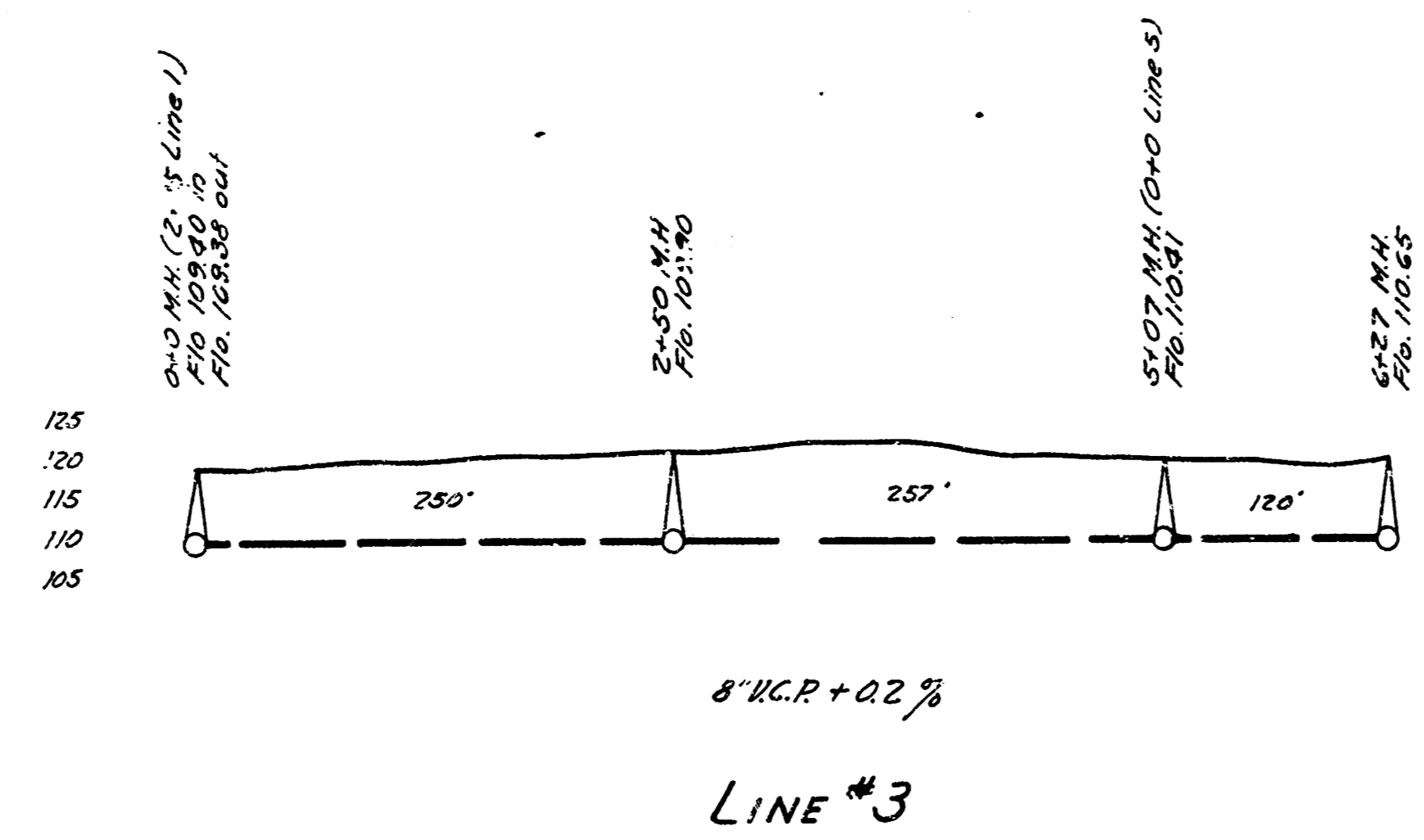
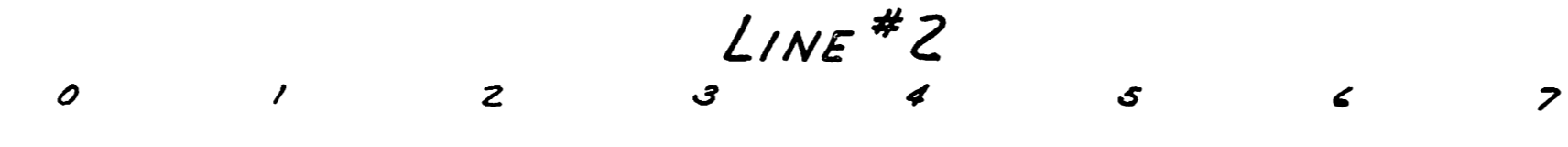
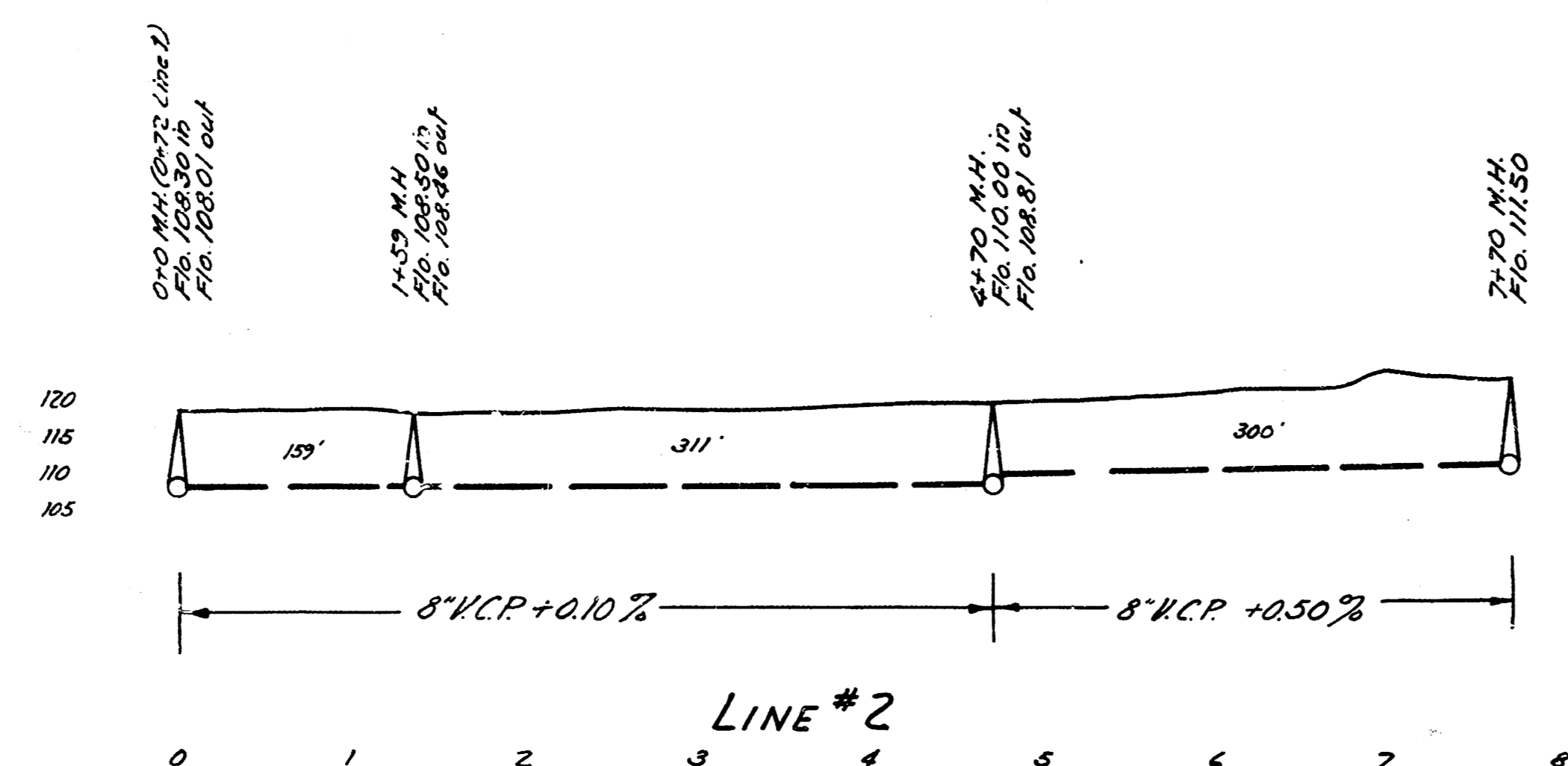
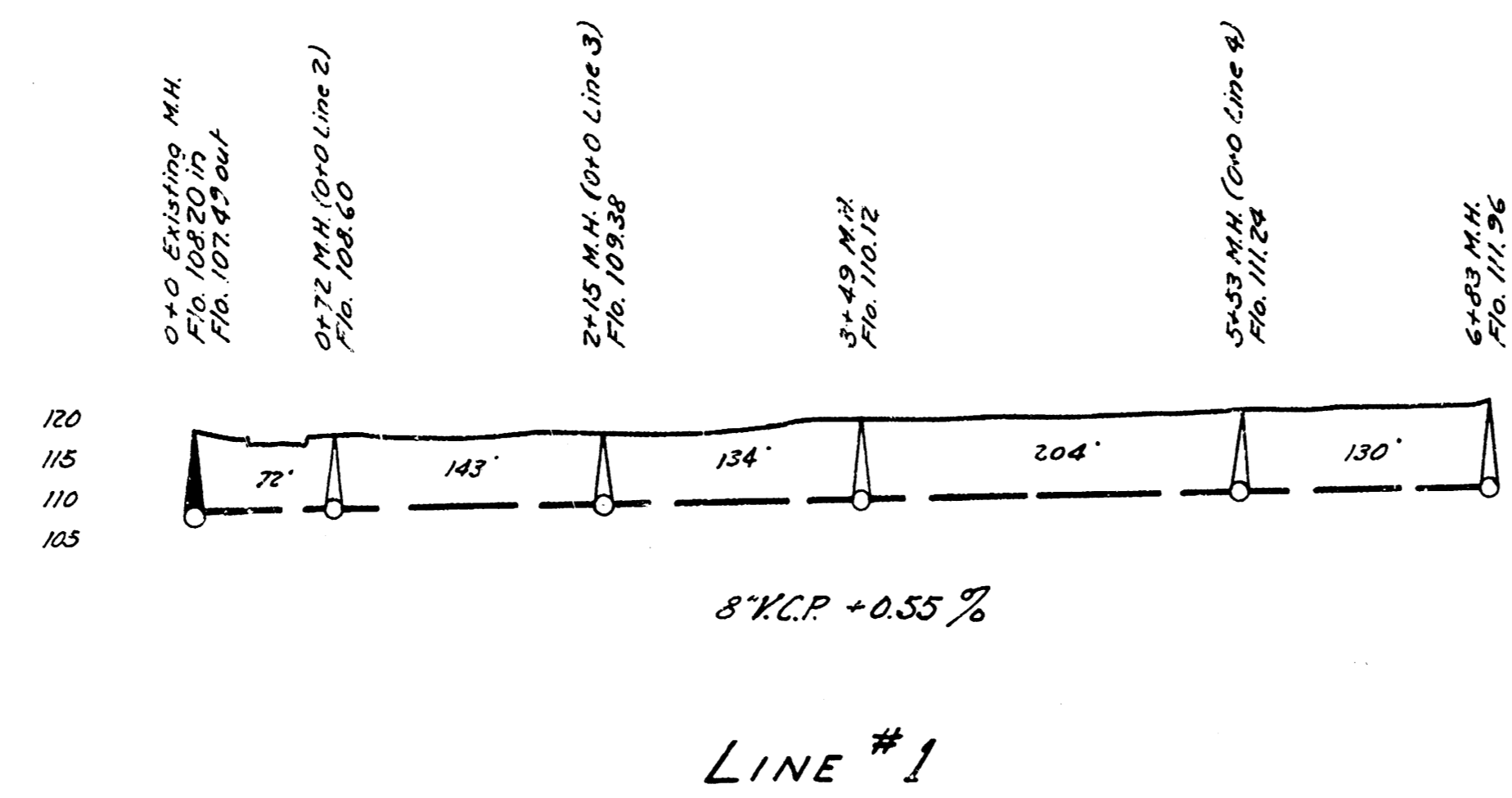
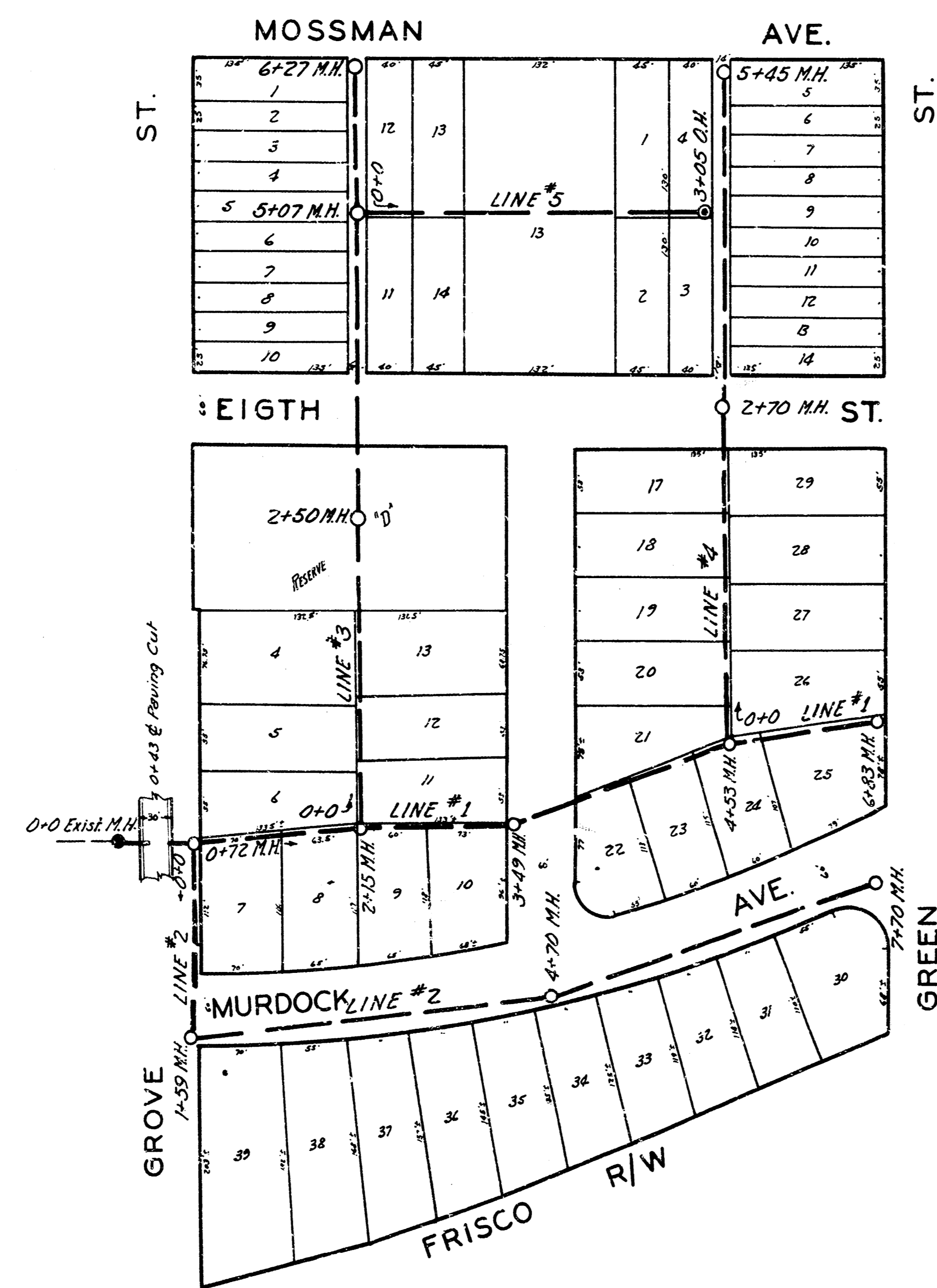


LAT. M, DIST. E, S.S. #12
WICHITA, KANSAS



B.M. 118.23 Top of west of 48" Conc. Pipe, N.S. Frisco R/W & Grove St.

LAT. M. DIST. E. S.S. #12



NOTE: The right is reserved by the CITY ENGINEER to change at the time of construction the location of laterals as shown on plan.

ENGINEERING DEPARTMENT
 CITY OF WICHITA, KANSAS
 P.L. BROCKWAY CITY ENGINEER
 B.E. SMITH ENGINEER OF DESIGN
 MAY 1942 SCALE 1" = 80'