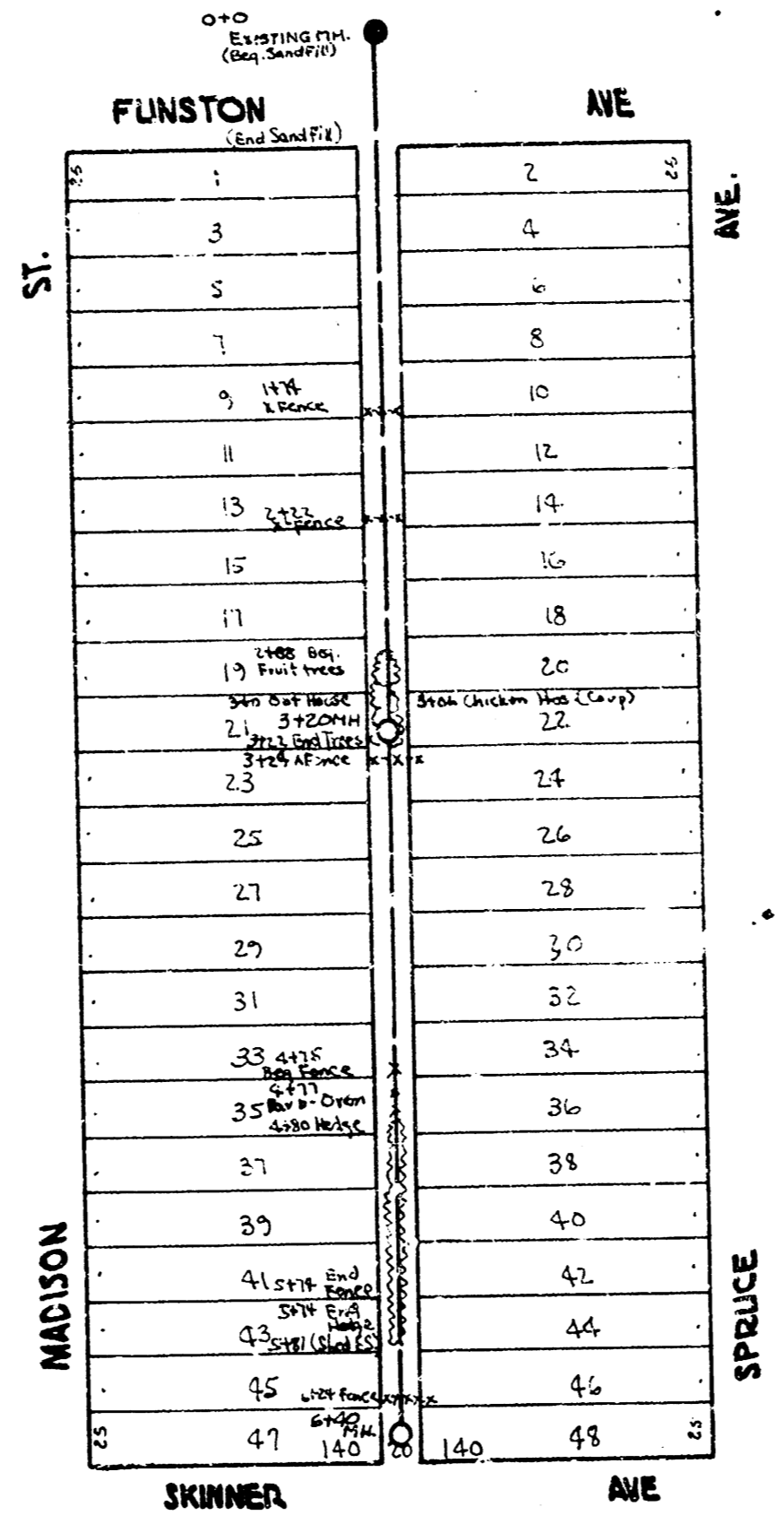
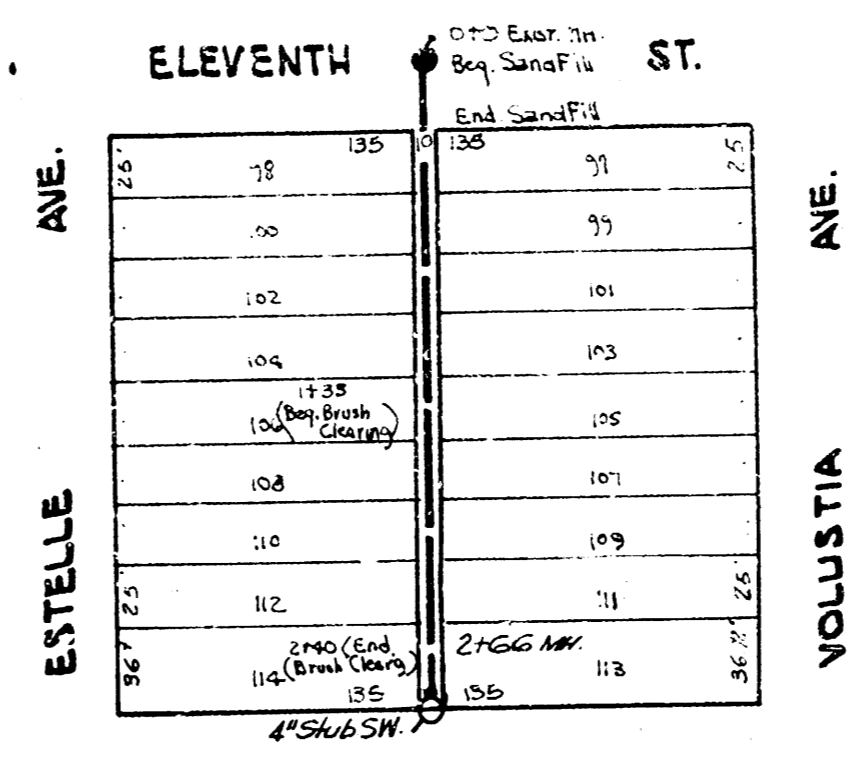


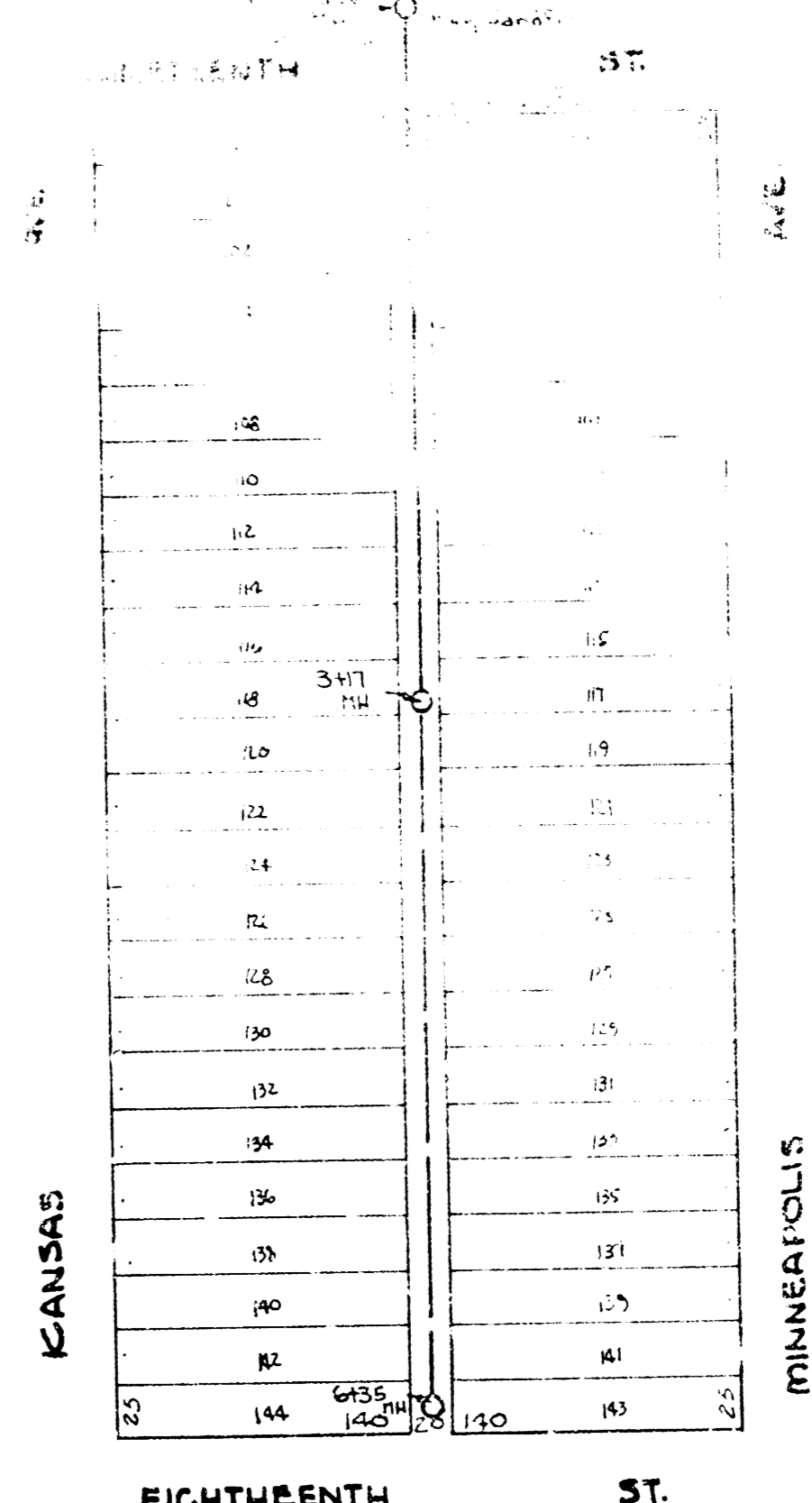
LAT. 14, DIST. 8, SS\* 20  
 81. 36.50' S. Side of Scott Ave. (City of Wichita)



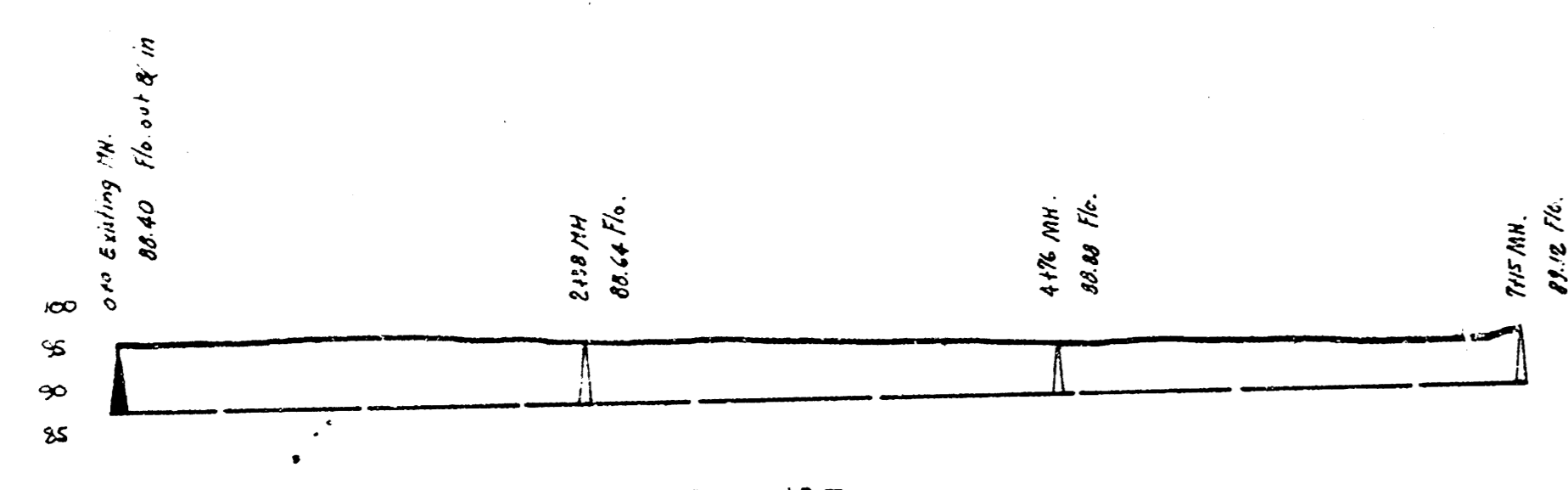
LAT. 10, DIST. 15, SS\* 12  
 81. 79.25' G. in Curve So. End. W. Co. Spruce & Funston



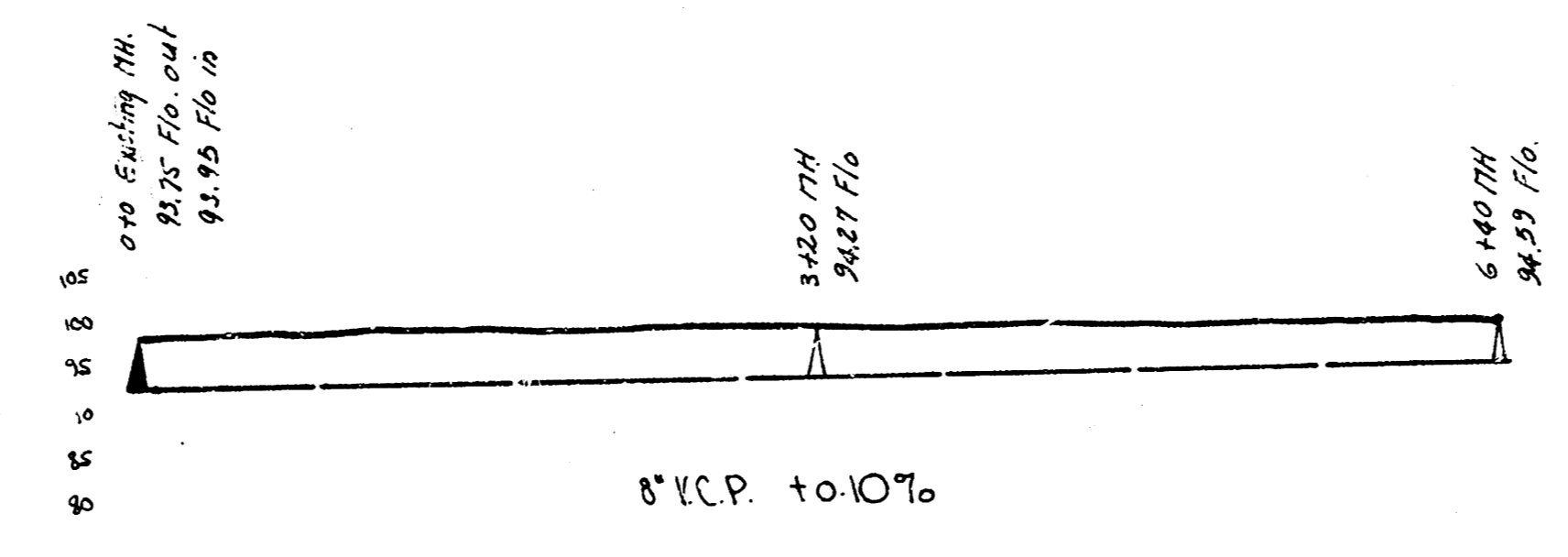
LAT. 12, DIST. E, SS\* 12  
 81. 123.11 No. Rim Mt. in Eleventh Street.



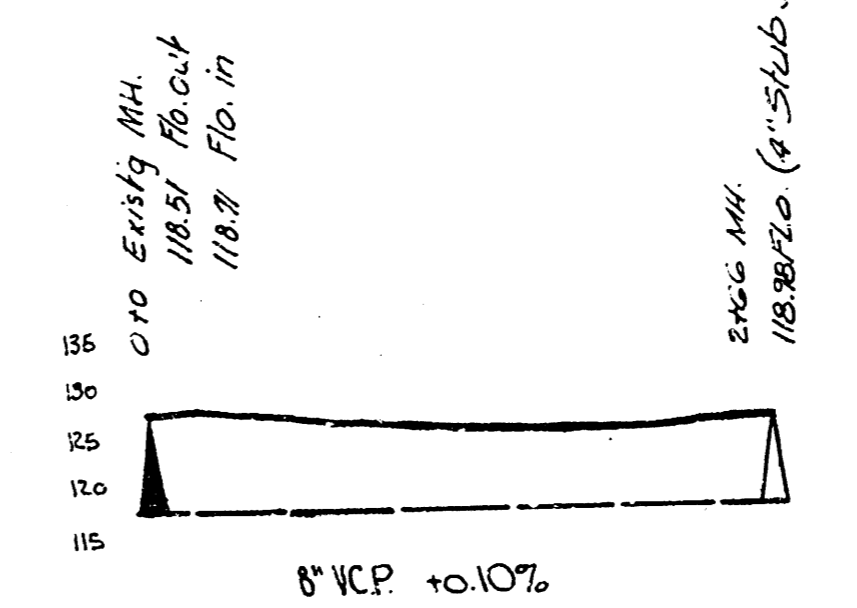
LAT. 17, DIST. T, SS\* 12  
 81. 120.7-7 No. Sum of So. Spruce 19th & Hydraulic



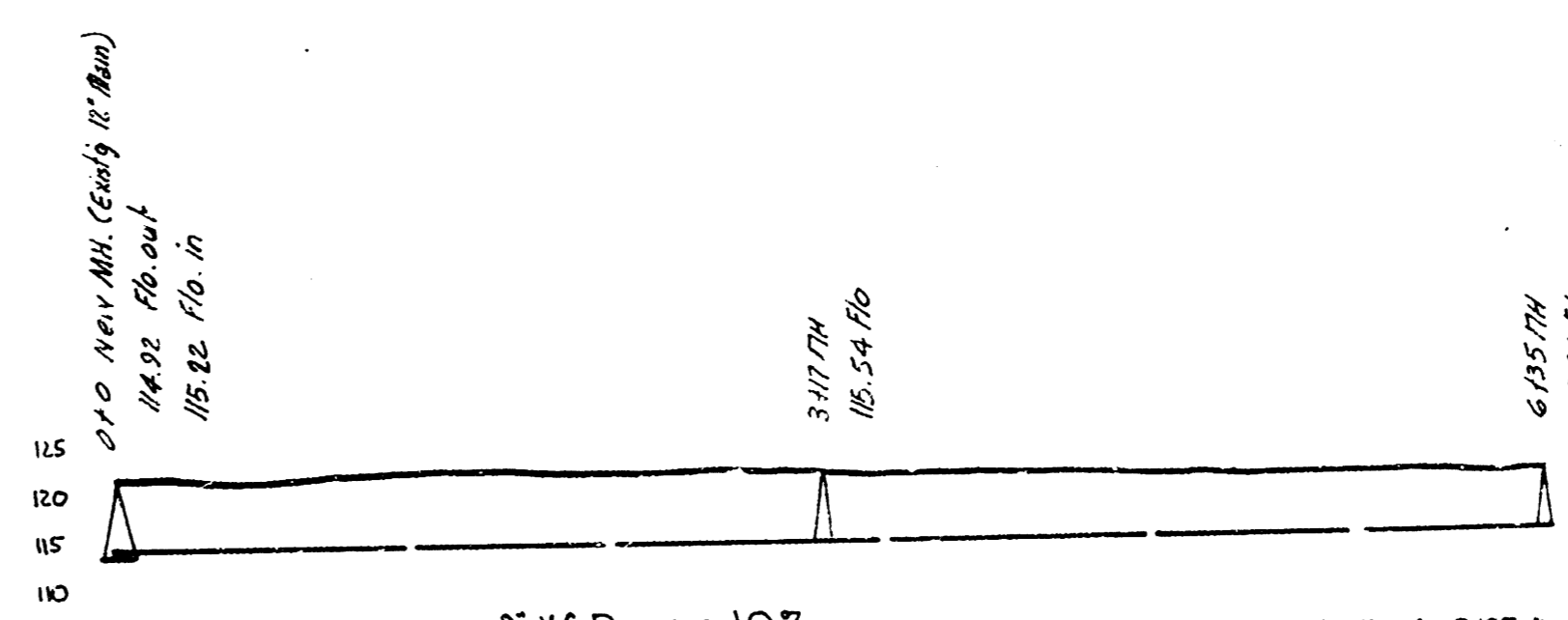
LAT. 14, DIST. 8, SS\* 20



LAT. 10, DIST. 15, SS\* 12



LAT. 12, DIST. E, SS\* 12



LAT. 17, DIST. T, SS\* 12

LAT. 14, DIST. 8, SS\* 20 — LAT. 10, DIST. 15, SS\* 12  
 LAT. 12, DIST. E, SS\* 12 — LAT. 17, DIST. T, SS\* 12  
 CITY OF WICHITA, KANSAS  
 L.K. WHITE - CITY ENGINEER  
 1949