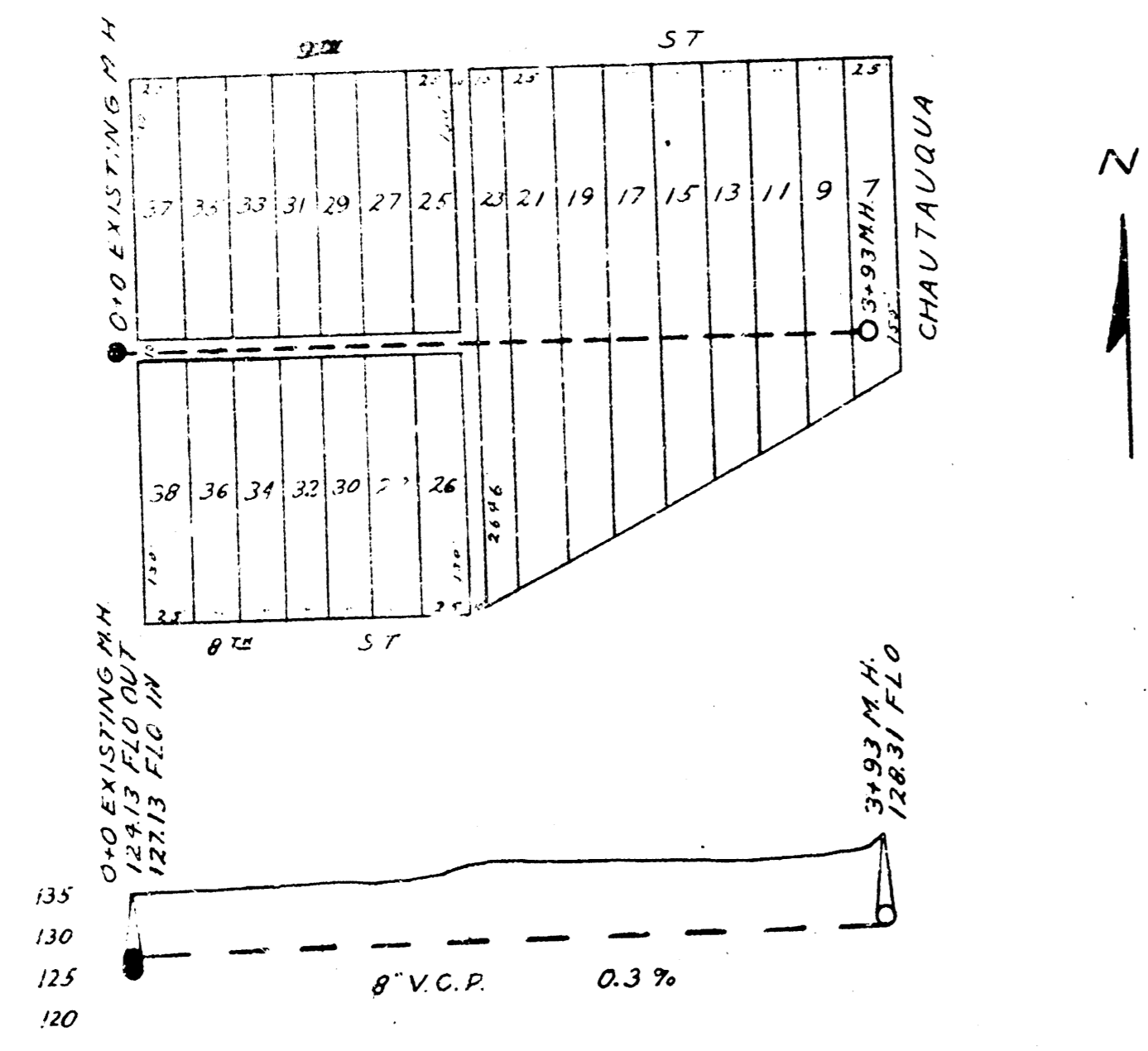
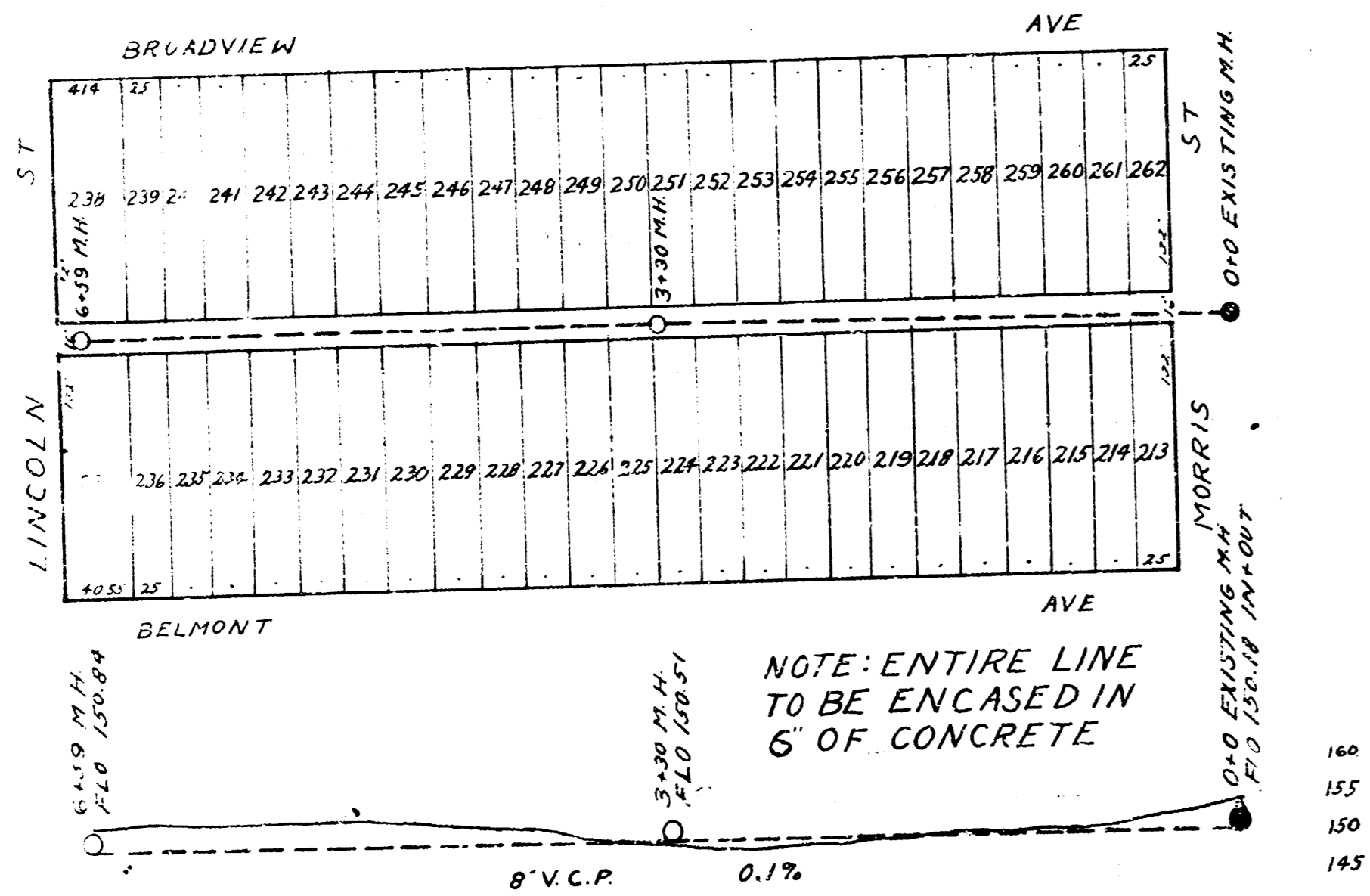


LAT X DIST E. S.S.#12



B.M. 13857 N.E. COR. WALK IN FRONT OF HOUSE,
S.E. COR. MOSSMAN + CHAUTAUQUA

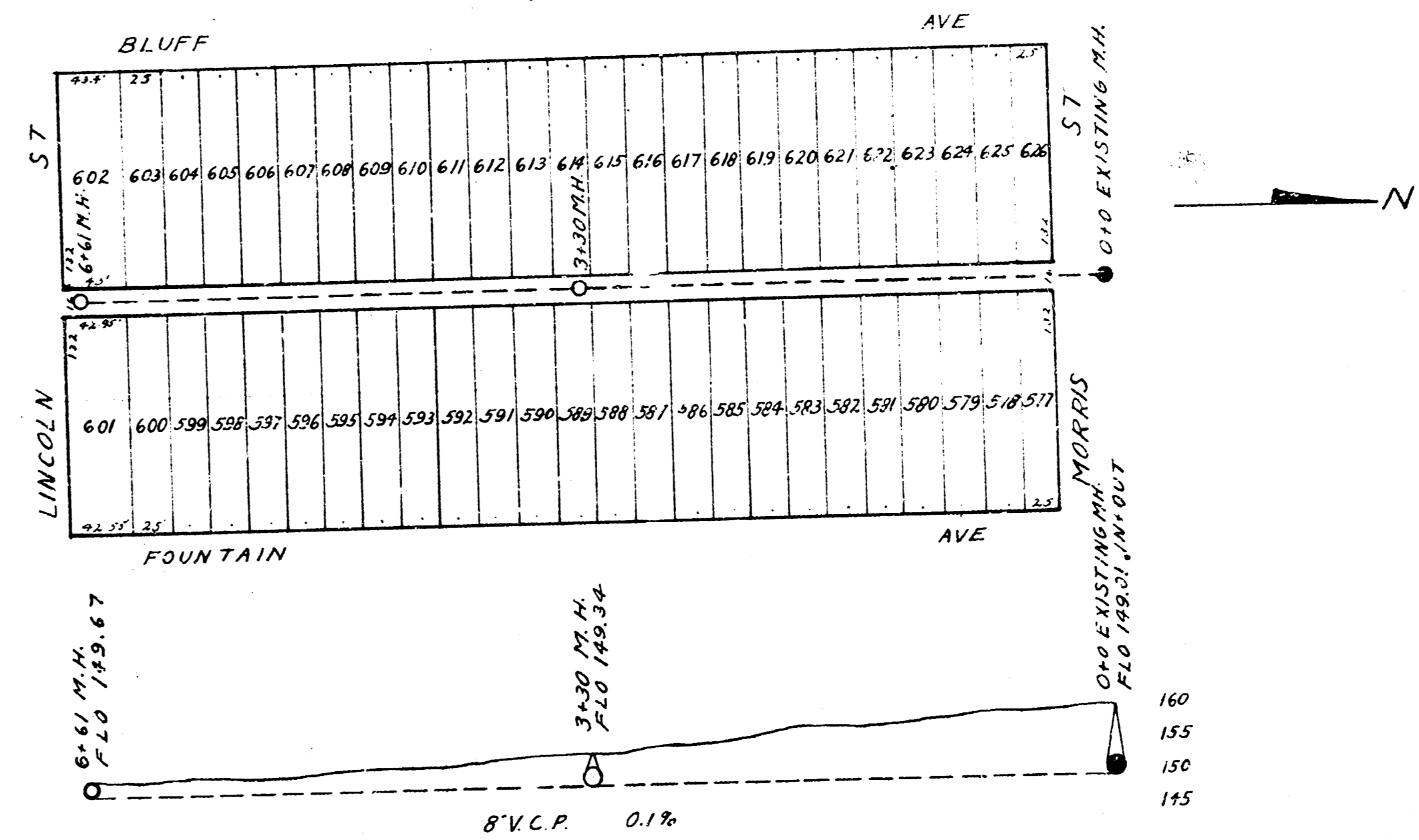
LAT 9 DIST 6 S.S.#12



NOTE: ENTIRE LINE
TO BE ENCASED IN
6" OF CONCRETE

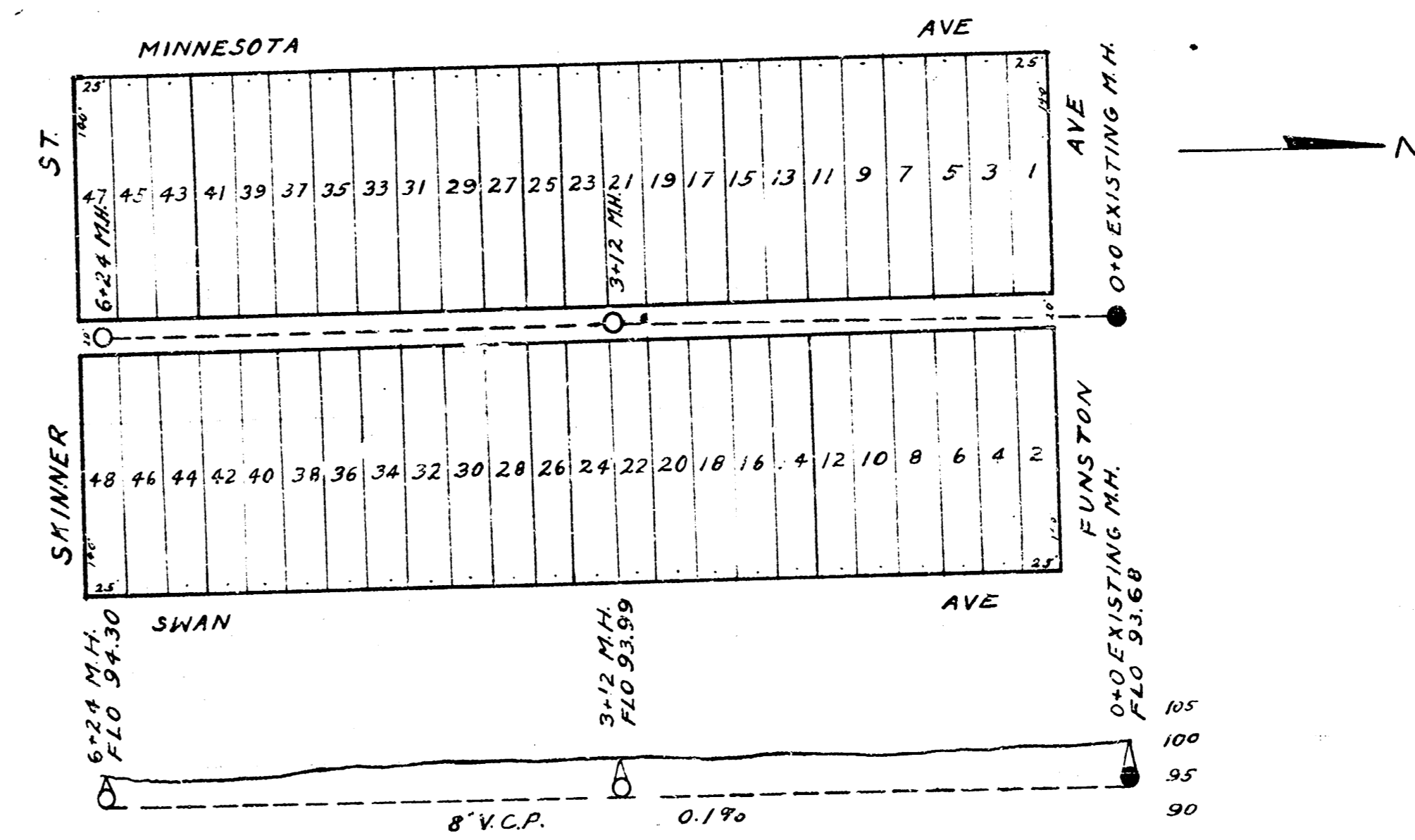
B.M. 15398 W. RIM M.H. STA 0+0
B.M. 14914 6" IN GLOBE ES BRADVIEW + N. LINCOLN

LAT 8 DIST 6 S.S.#12



B.M. 14914 6" IN GLOBE ES BRADVIEW + N. LINCOLN
B.M. 15951 W. RIM STA 0+0

LAT 27 S.S.#20



B.M. 2968 WEST RIM M.H. STA 0+0
B.M. 10170 S.E. COR. CONC. FOUNDATION, HO. ON 2ND L.
N. OF SKINNER W.S. MINNESOTA

DEPARTMENT OF PUBLIC SERVICE
ENGINEERING DIVISION
CITY OF WICHITA, KANSAS
L.K. WHITE CITY ENGINEER
OCT. 1946