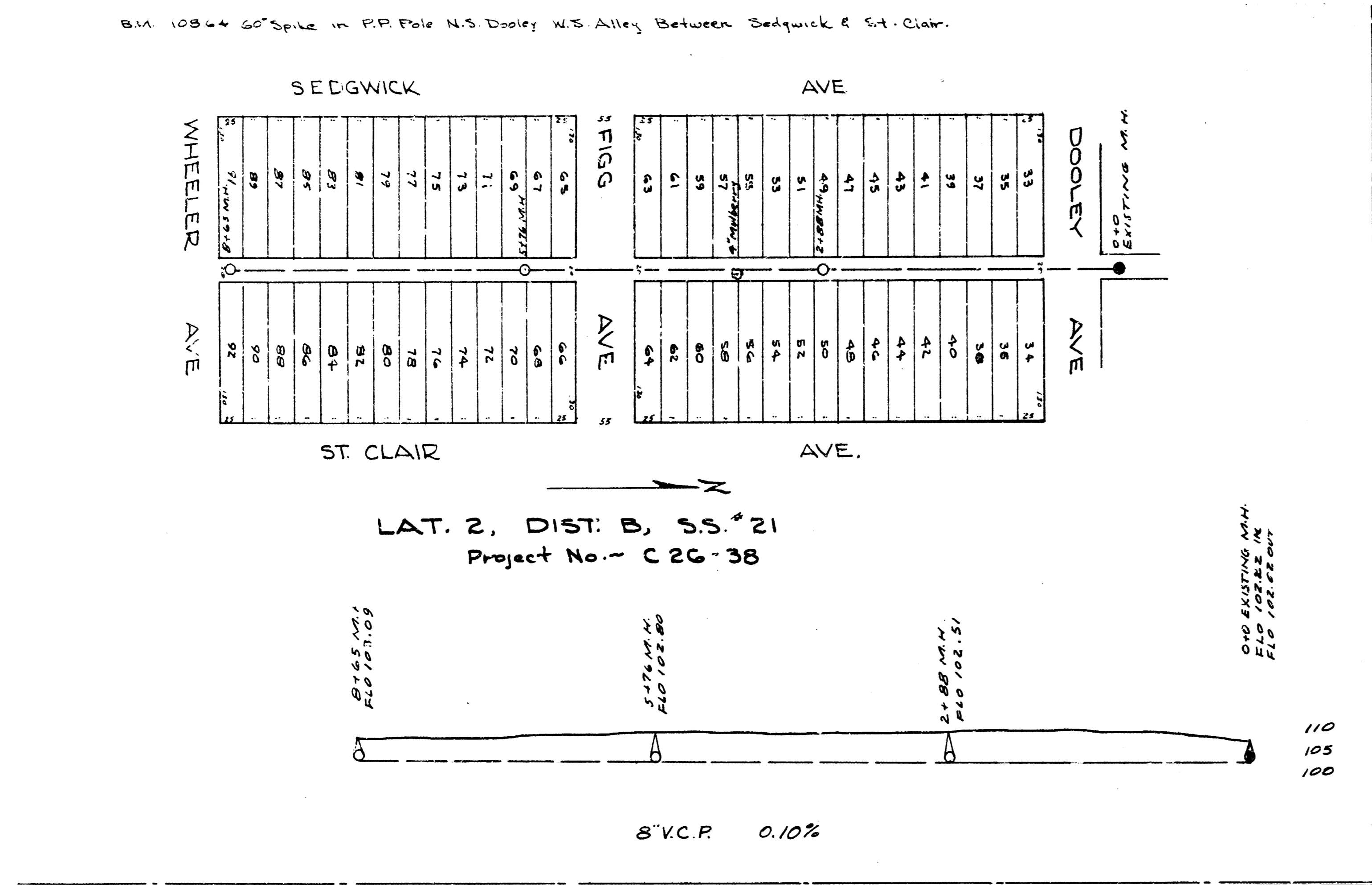
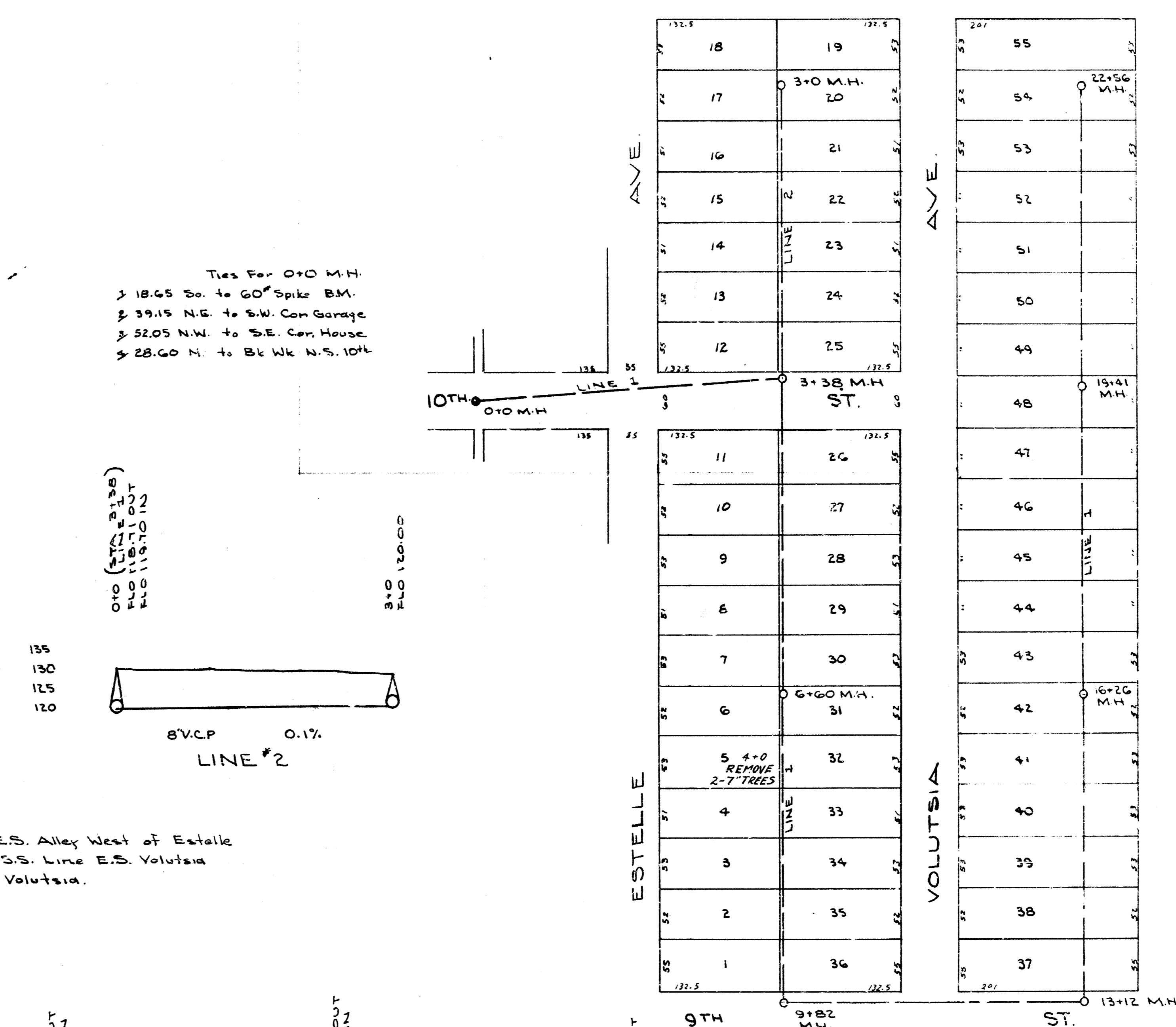


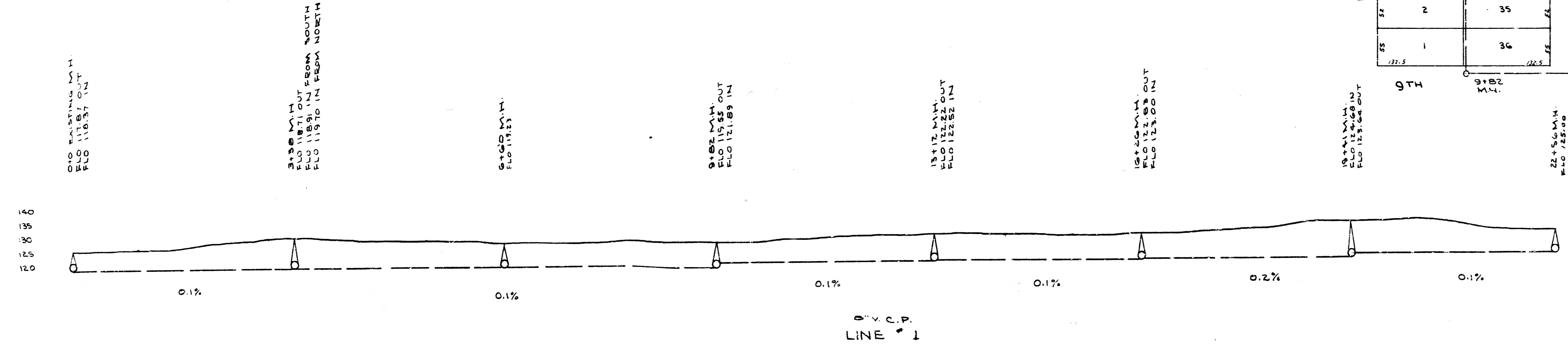
BM. 108.64 60" Spike in P.P. Pole N.S. Dooley W.S. Alley Between Sedgwick & St. Clair.



LAT. 2, DIST. E, S.S. 12



BM. 125.00 60" Spike in P.P. S.S. 10th E.S. Alley West of Estelle
BM. 130.71 N.E. Car Brick Ledge House S.S. Line E.S. Volusia
BM. 131.35 "G" in Globe S. Co. 9th & E.S. Volusia.



DEPARTMENT OF SERVICE
CITY OF WICHITA, KANSAS
ENGINEERING DIVISION
L. K. WHITE - CITY ENGINEER
Sanitary Sewer Plans
Scale 1"=80'
January 1947