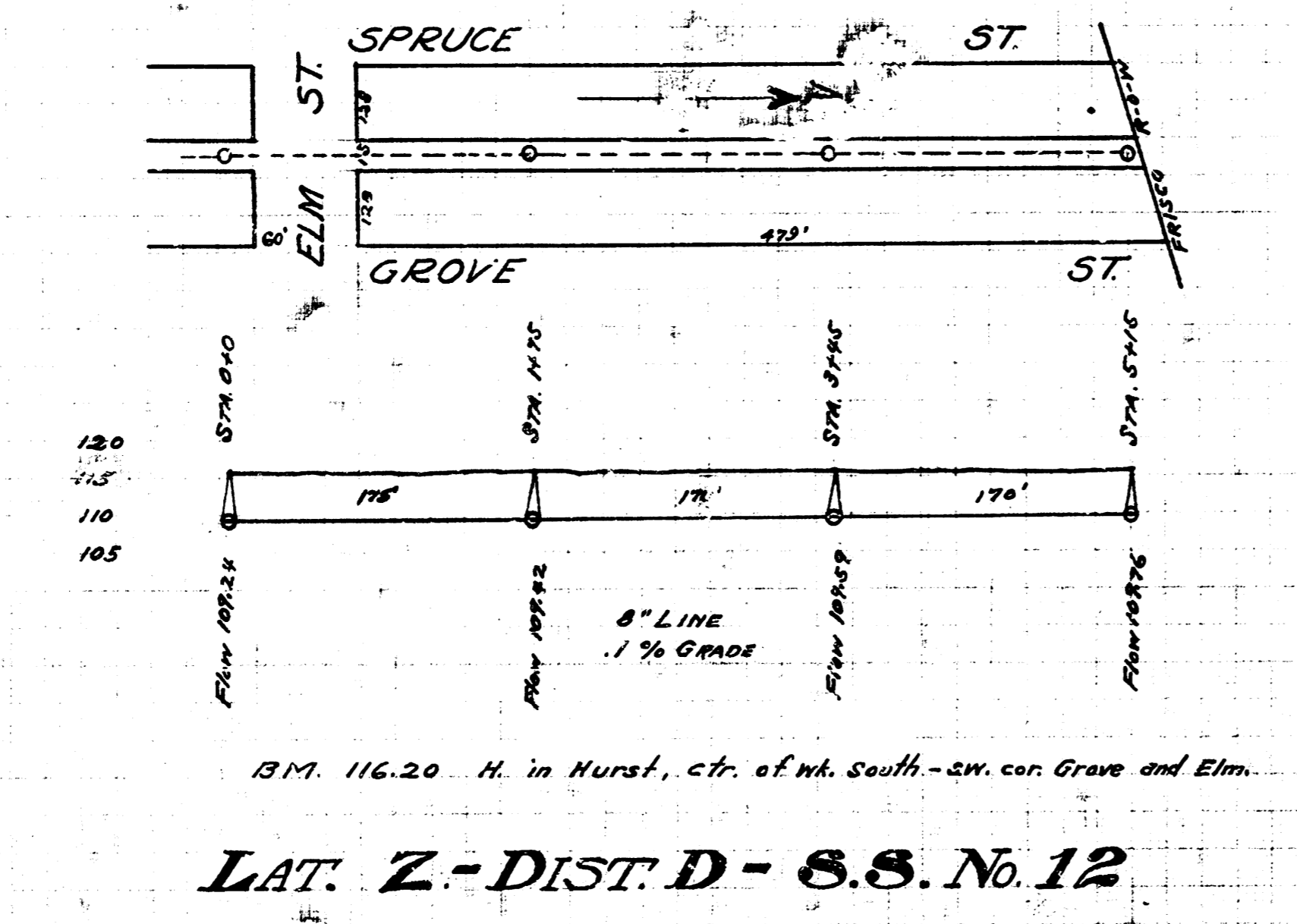
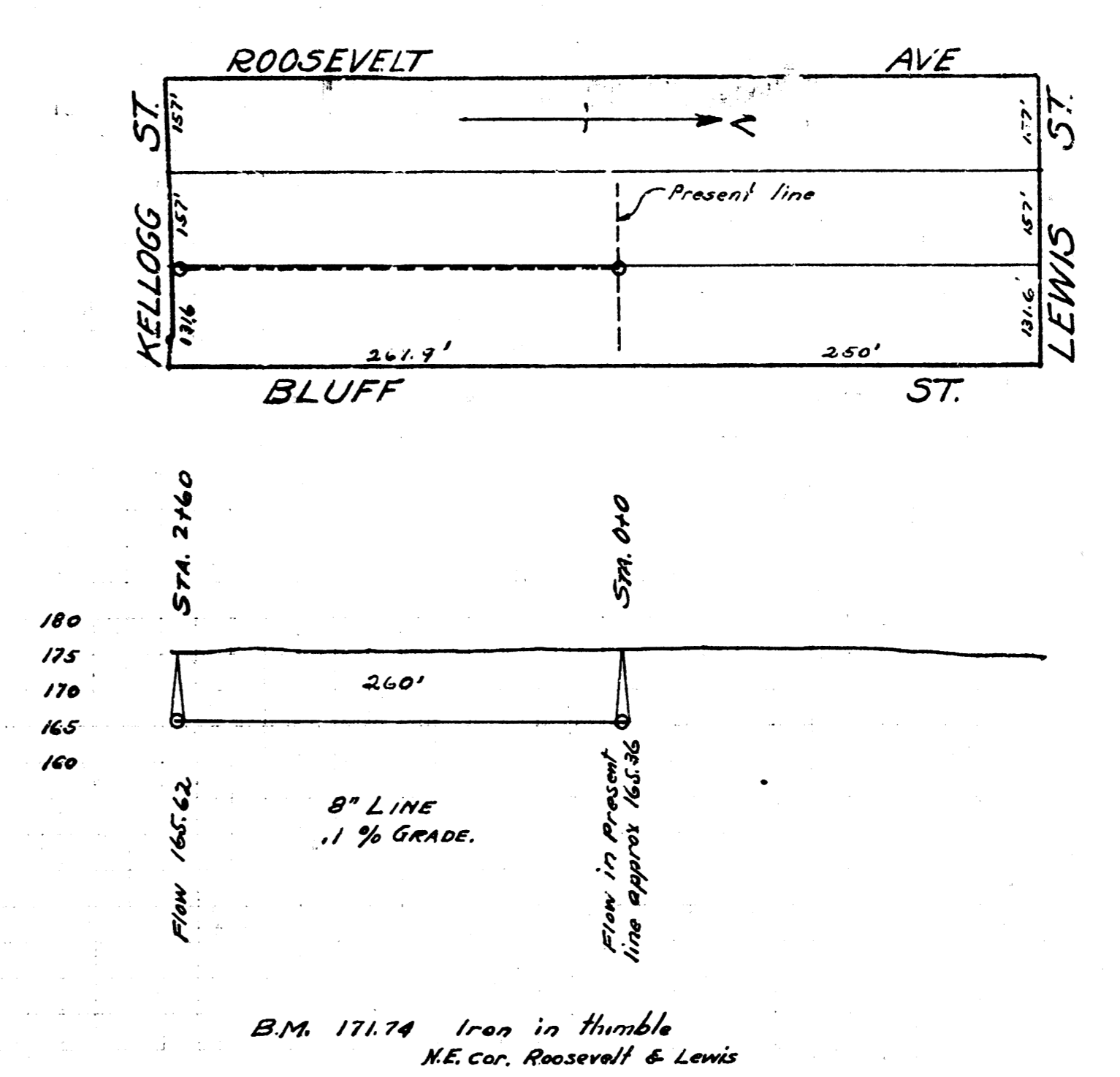


B.M. 118.06 D in Dixon, back of wall N. NE. cor. 1st and 14th.  
**LAT. K - DIST. O - S.S. No. 12.**



B.M. 116.20 H in Hurst, ctr. of mt. south-sw. cor. Grove and Elm.  
**LAT. Z - DIST. D - S.S. No. 12.**



B.M. 171.74 Iron in Humble NE. cor. Roosevelt & Lewis  
**LAT. 27 - DIST. A - S.S. No. 12**