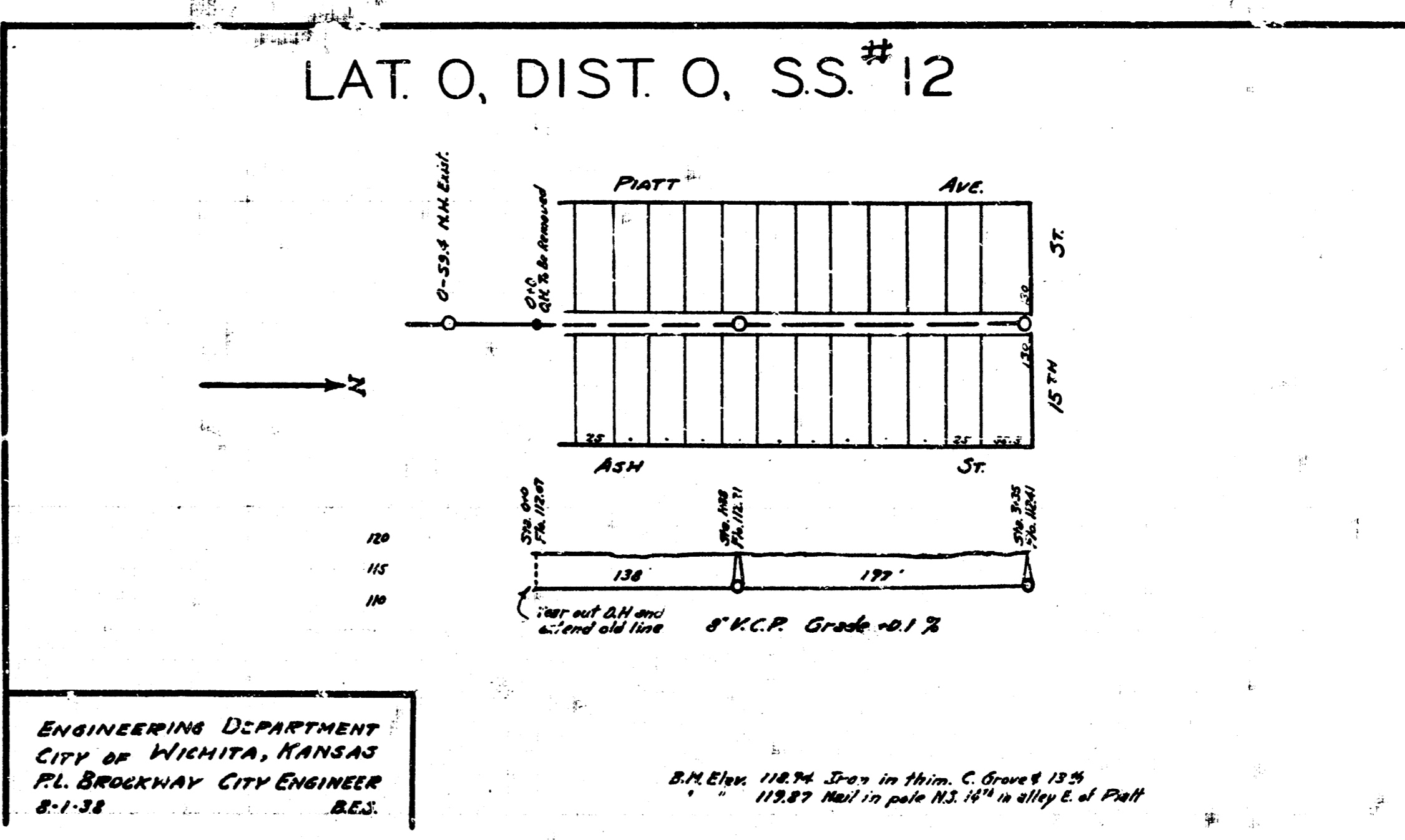
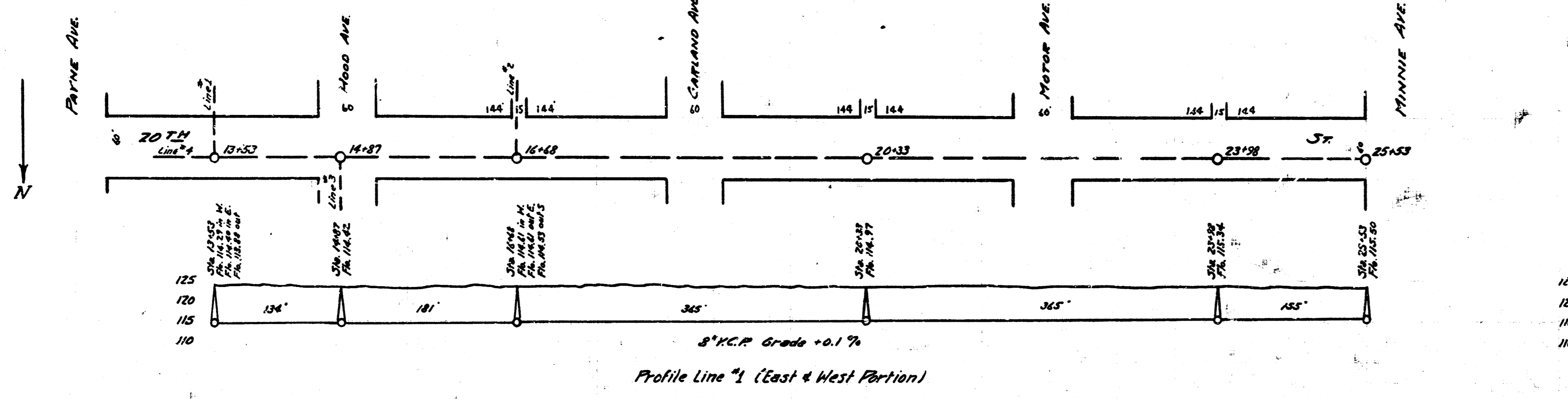
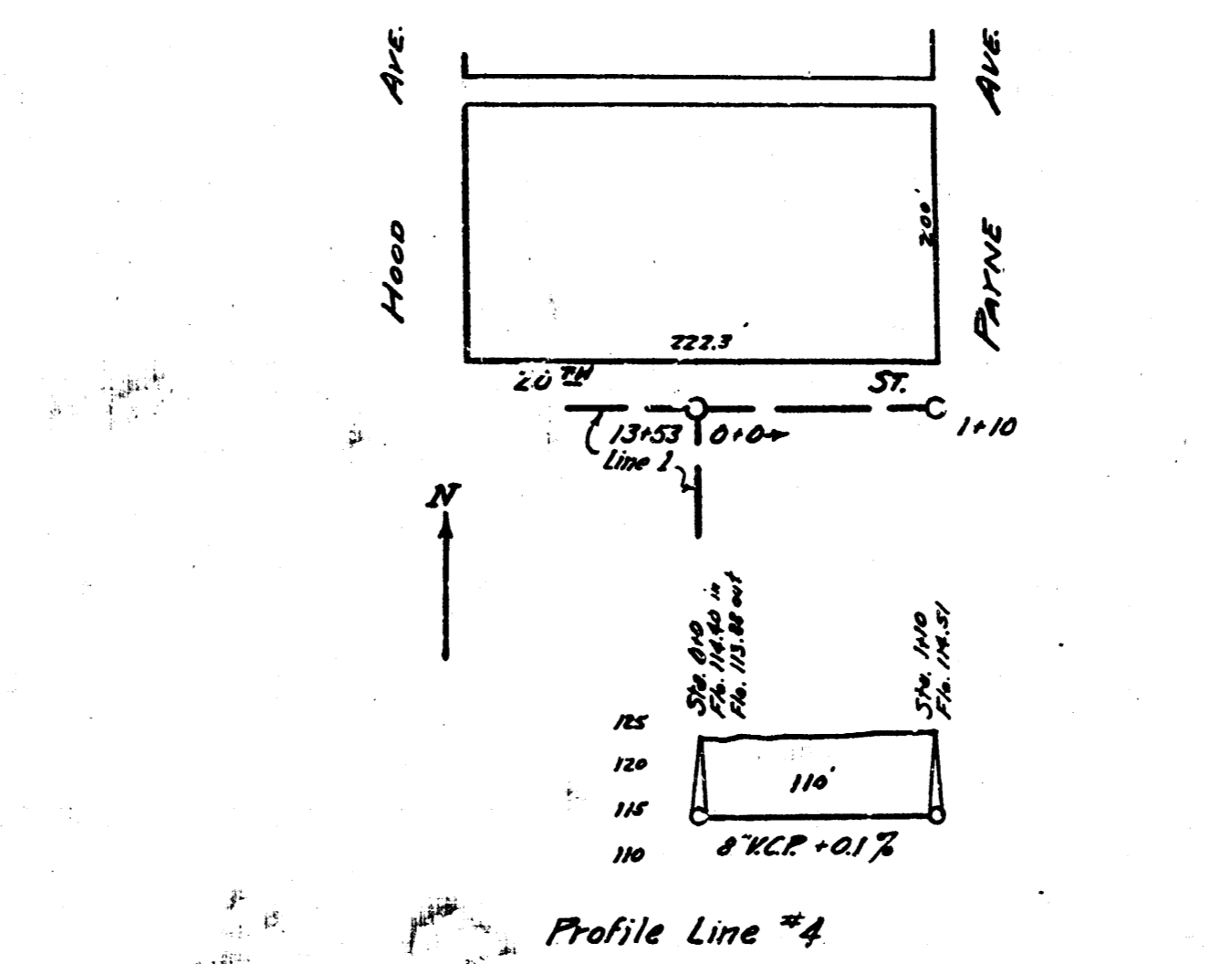
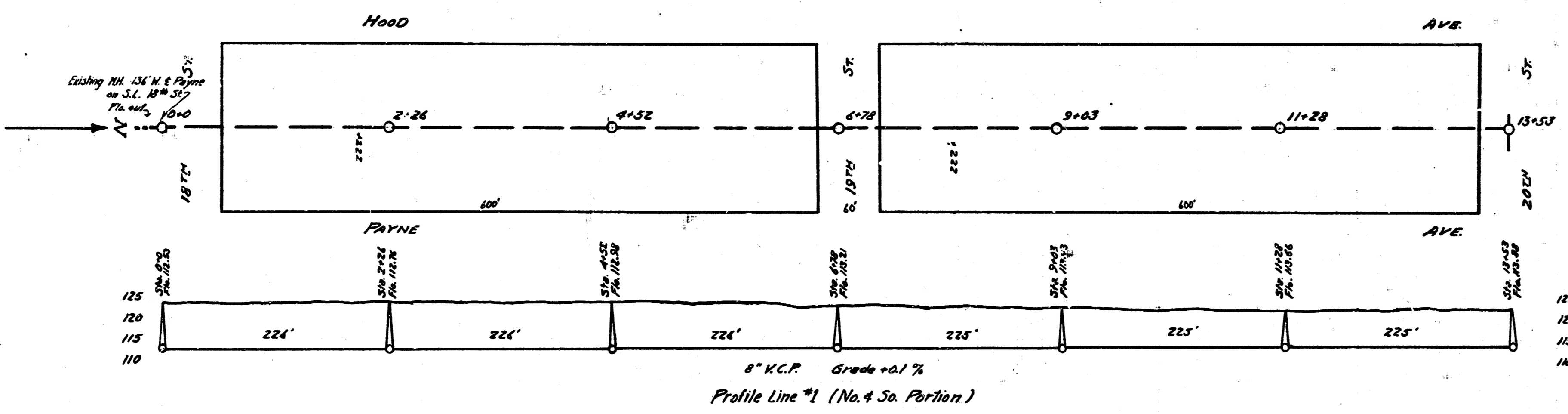


LAT. R, DIST. R, SS. # 20



B.M. Elev. 121.57 Iron in "Humble S.M. on Garland # 124

ENGINEERING DEPARTMENT
CITY OF WICHITA, KANSAS
PL. BROOKWAY CITY ENGINEER
B.E.S.

B.M. Elev. 118.74 Iron in "Him. C. Grove # 125
118.87 Nail in post N3. 14" in ally E. of Plat
8-1-38