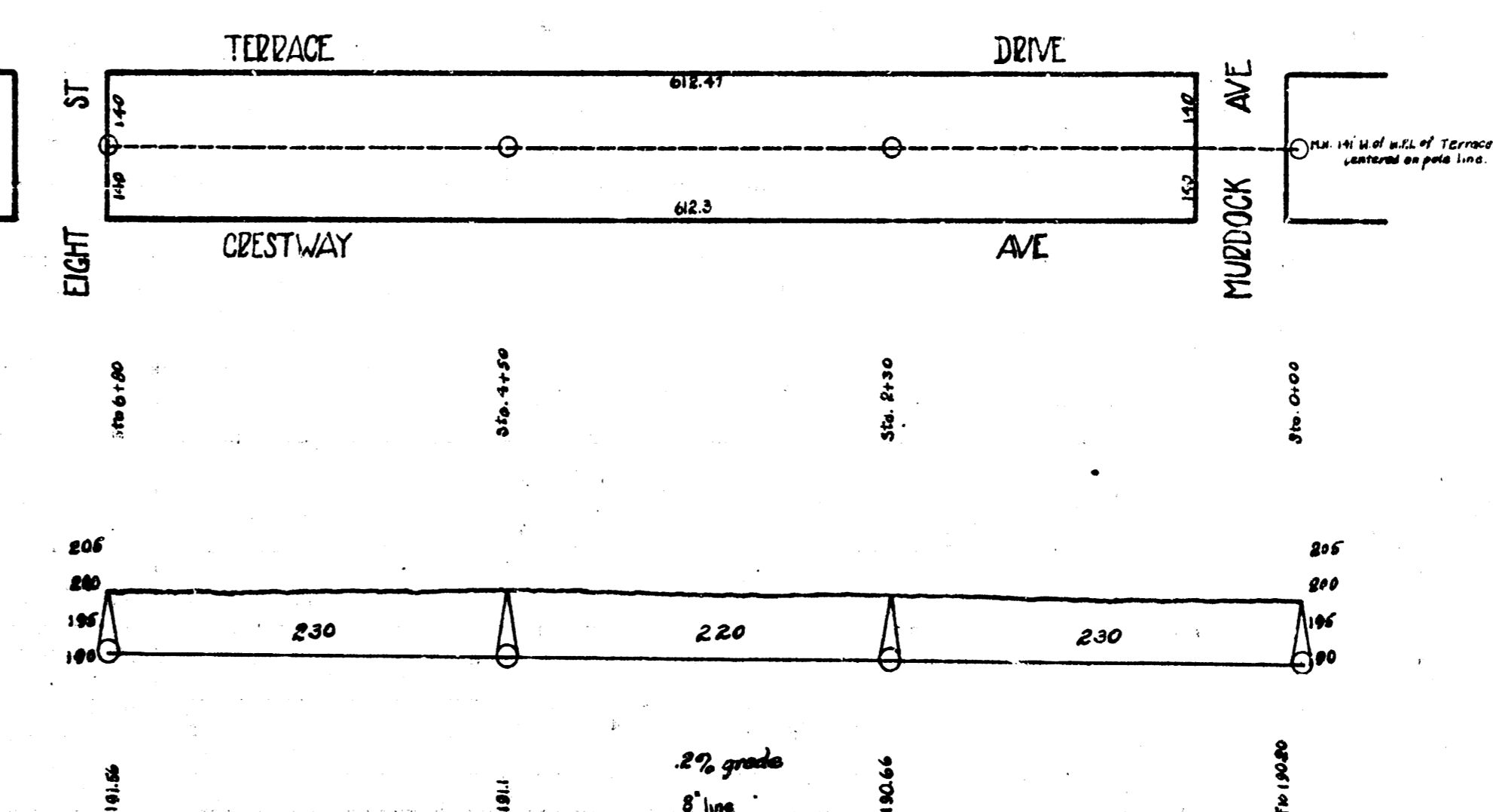
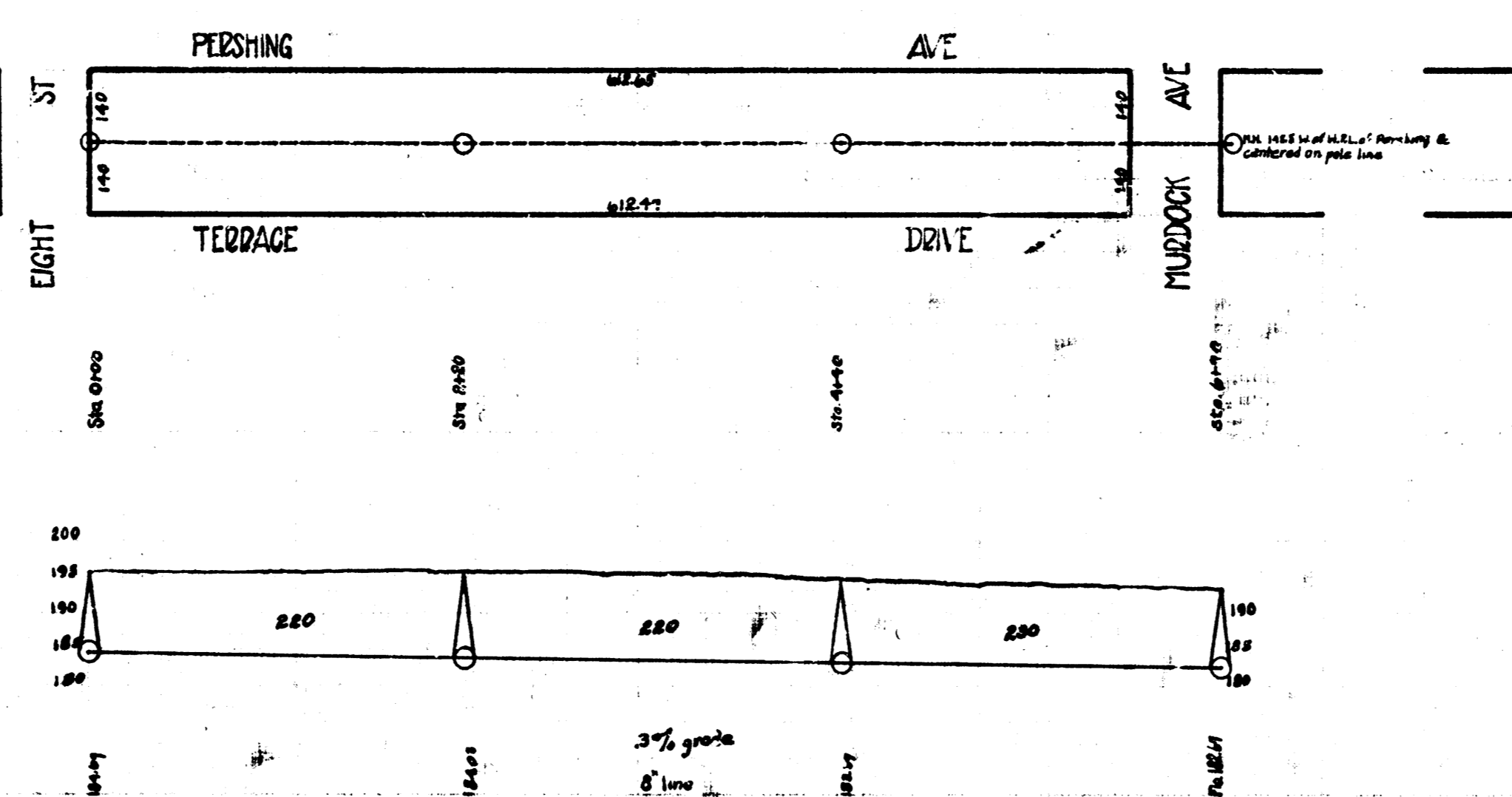
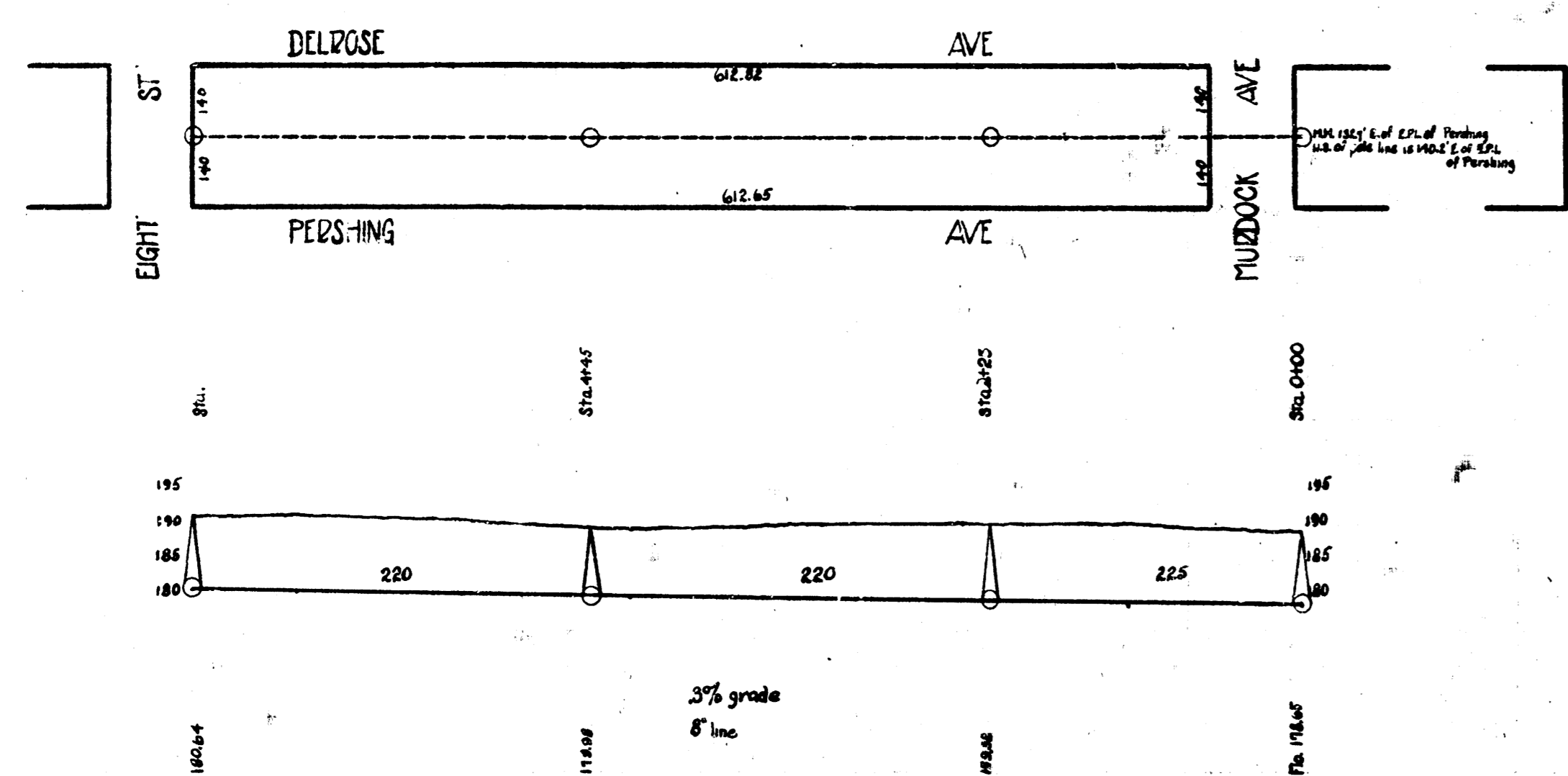
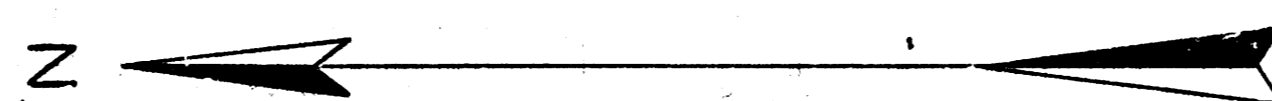
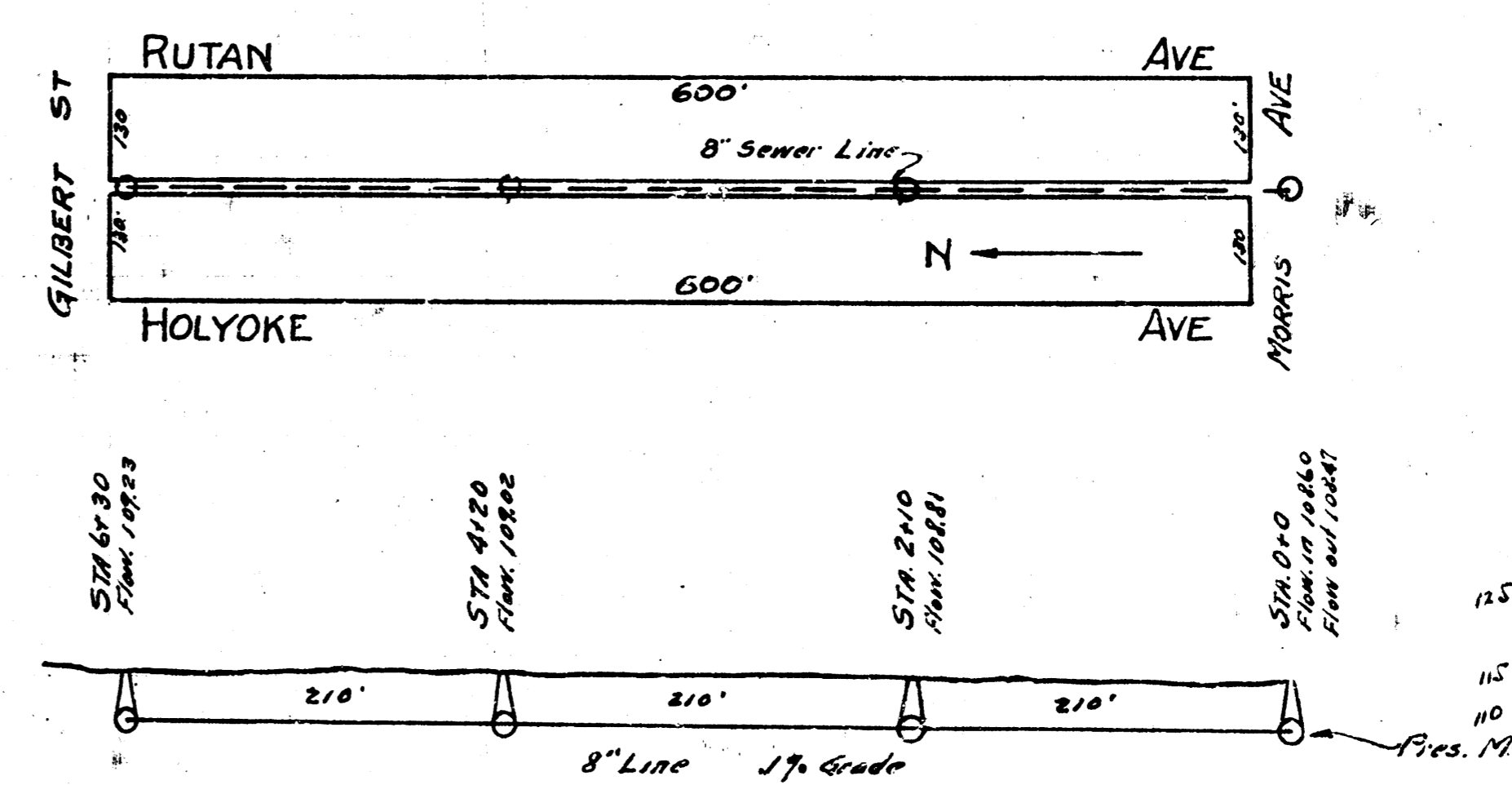
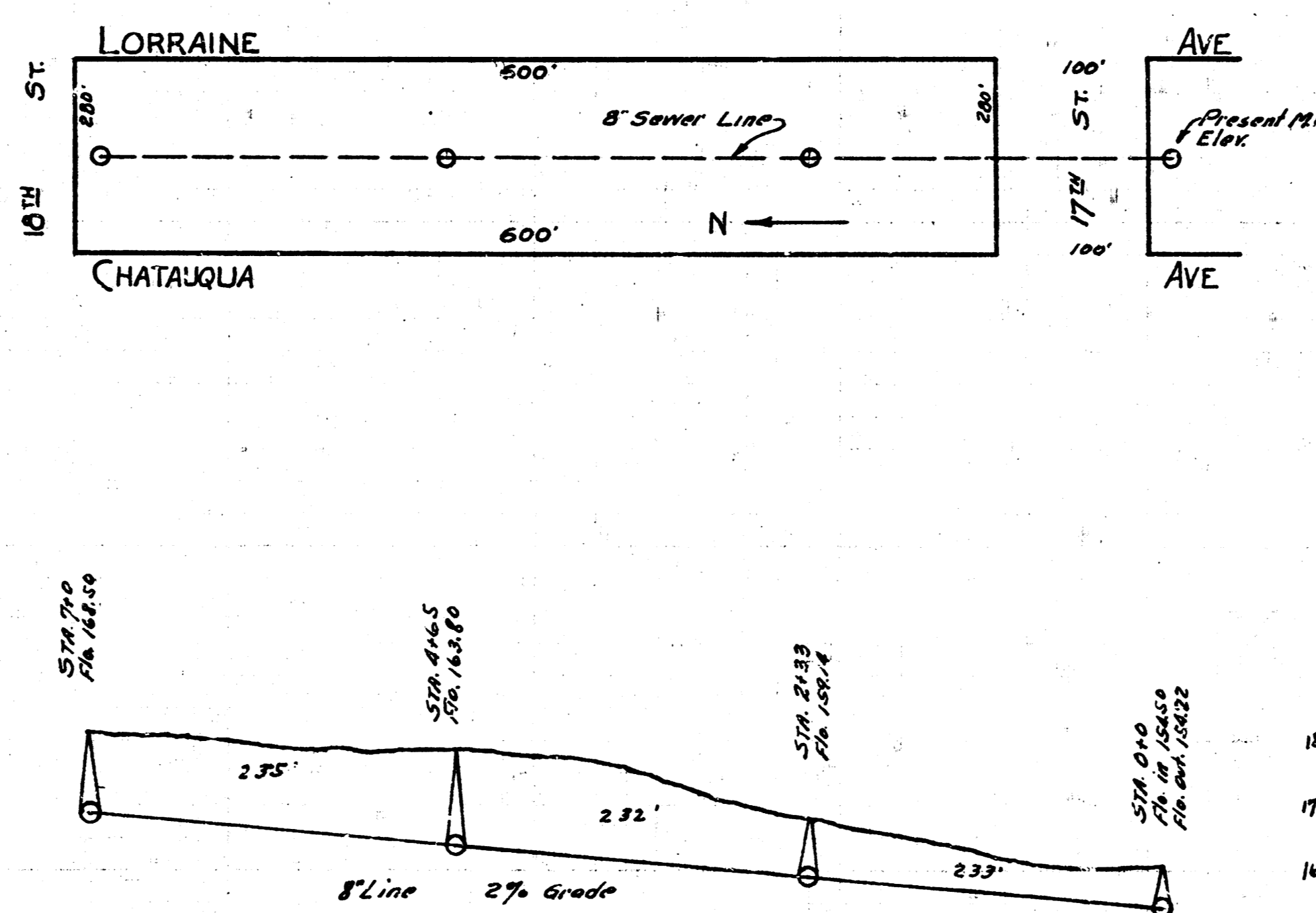
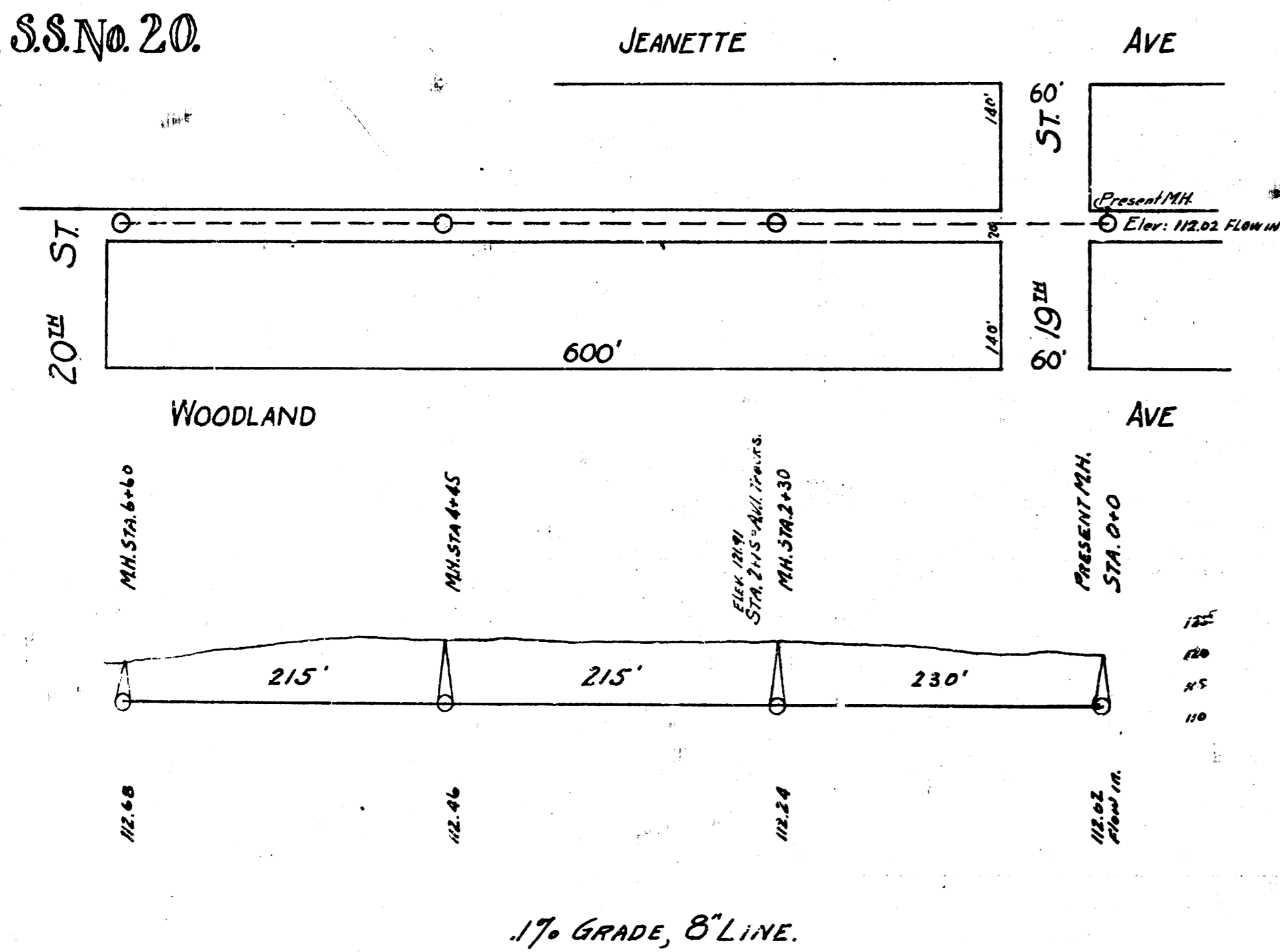


LAT. F, DIST. 6, S.S. 12



LAT. L, Dist. R, S.S. No. 20



LAT. A, DIST. P, S.S. 12.

LAT. F, DIST. 6, S.S. 12.

B.M. 10845 B in Buckridge off end of ref. S.W. cor. Hillside & Gilbert.  
 B.M. 1419 on S.S. 1/4 M.H. in alley between Holyoke & Rutan on Gilbert.

B.M. 16524 W in Whaley ch. of Mt. S. S.E. cor. Lorraine & 17th.