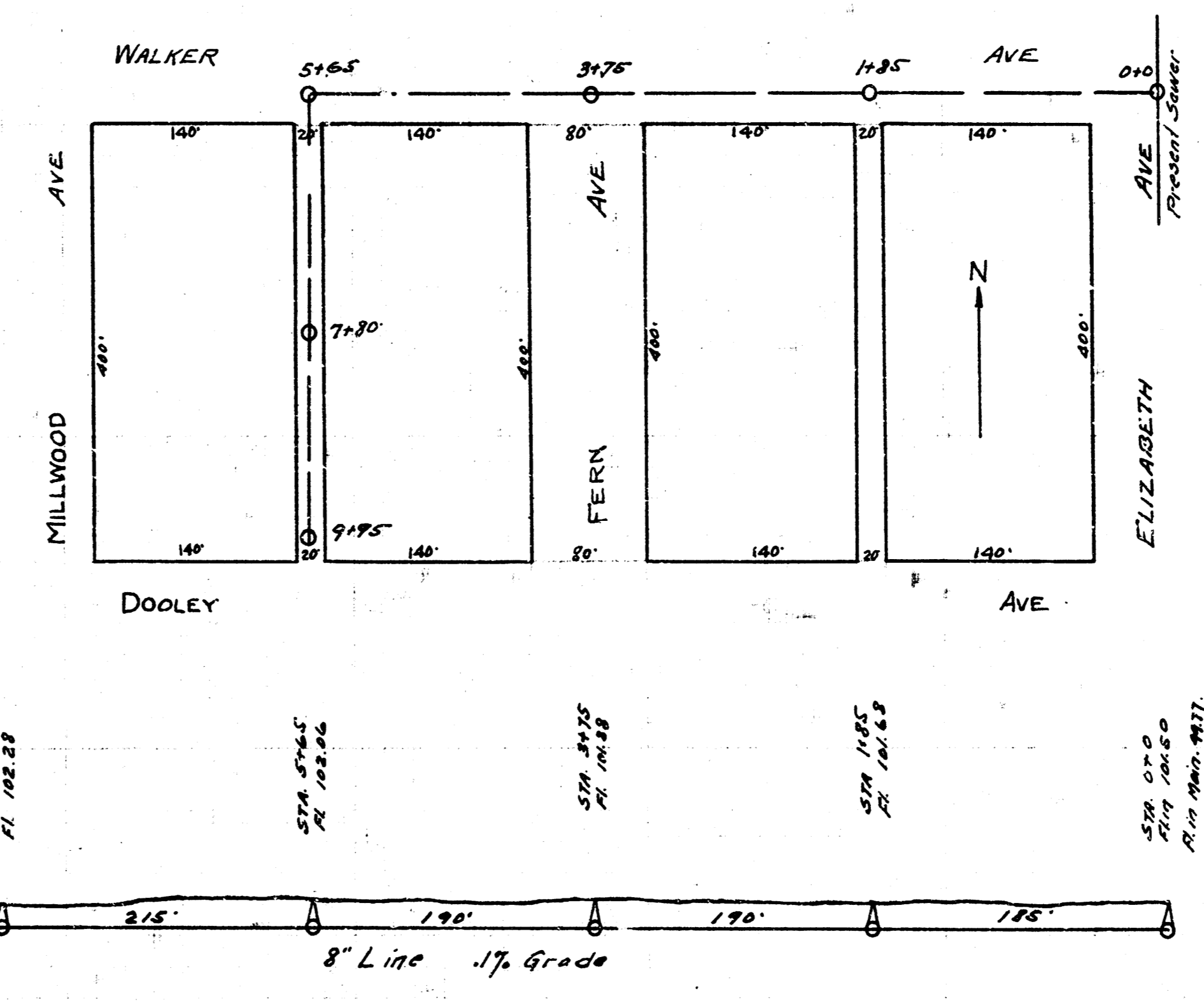


BM. 14574. W in Whaley Cr. of
Wk So. S.E. Lorraine + 17th.

LAT. B, DIST. P, SS. 12.



M.H. north of Walker is 348' E 7th.
S.E. Wk on Elizabeth + 19th is
S.E. line of Walker east.
BM. 10560. L in Long Cr. of Wk
E.S.E. Elizabeth + Walker.

LAT. 17, DIST. A, SS. NO. 21