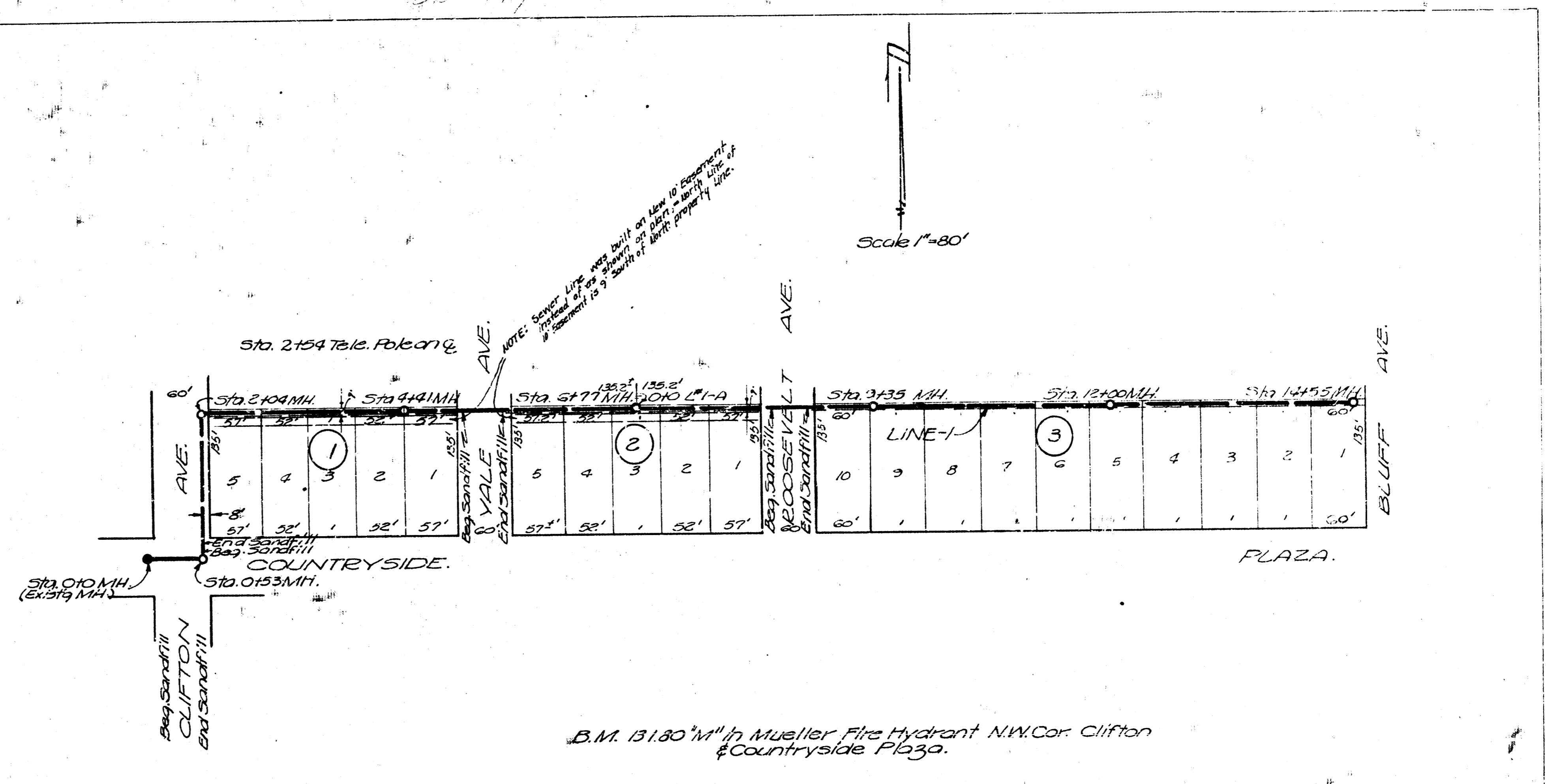
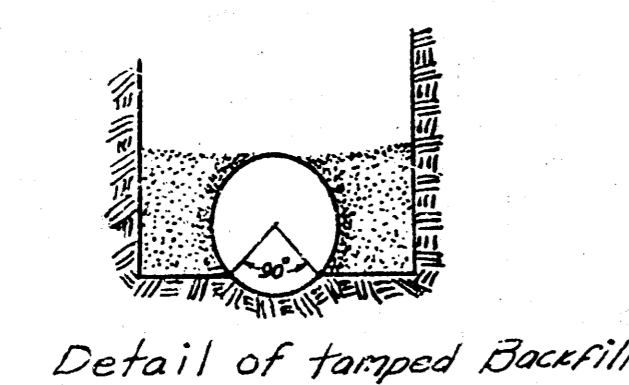


NOTE: Sta. 2104 to N.E. of Russell
is not to be used for a manhole
instead of as shown on plan.

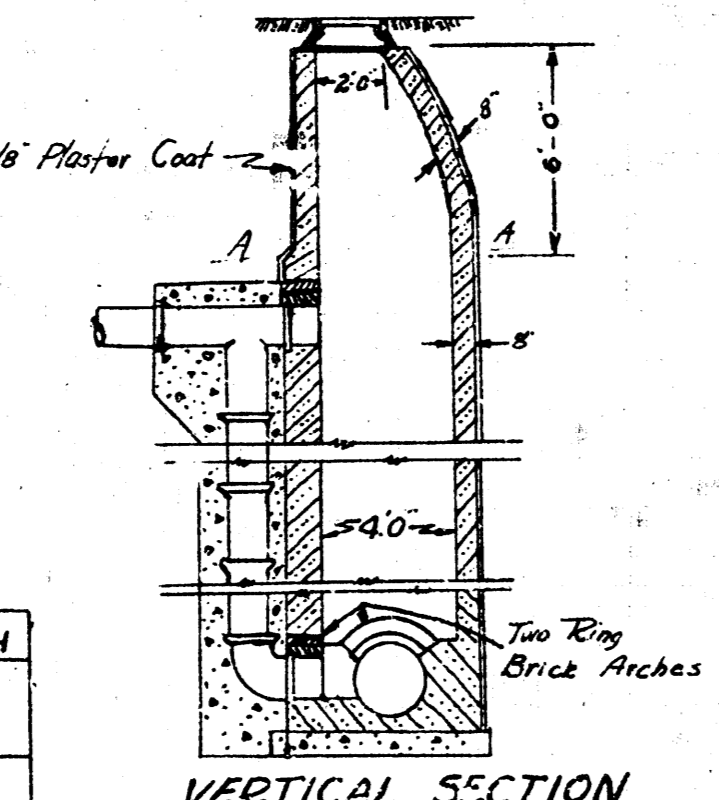


NOTE: Some lines may still be in the
original location. It is the engineer's
responsibility to check the location of
all lines before construction.

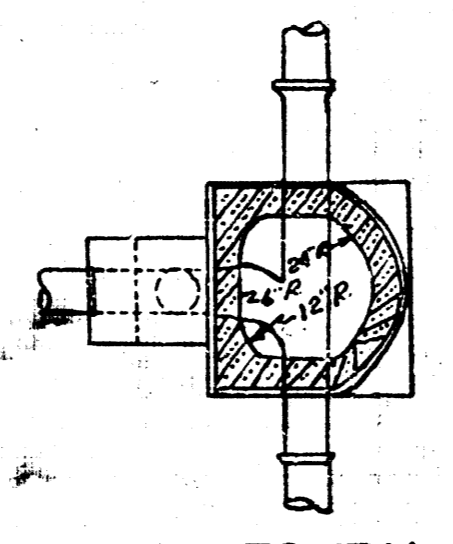
B.M. 131.80' in Mueller Fire Hydrant N.W. Cor. Clifton
& Countryside Plaza.



Detail of tapered basefill



VERTICAL SECTION



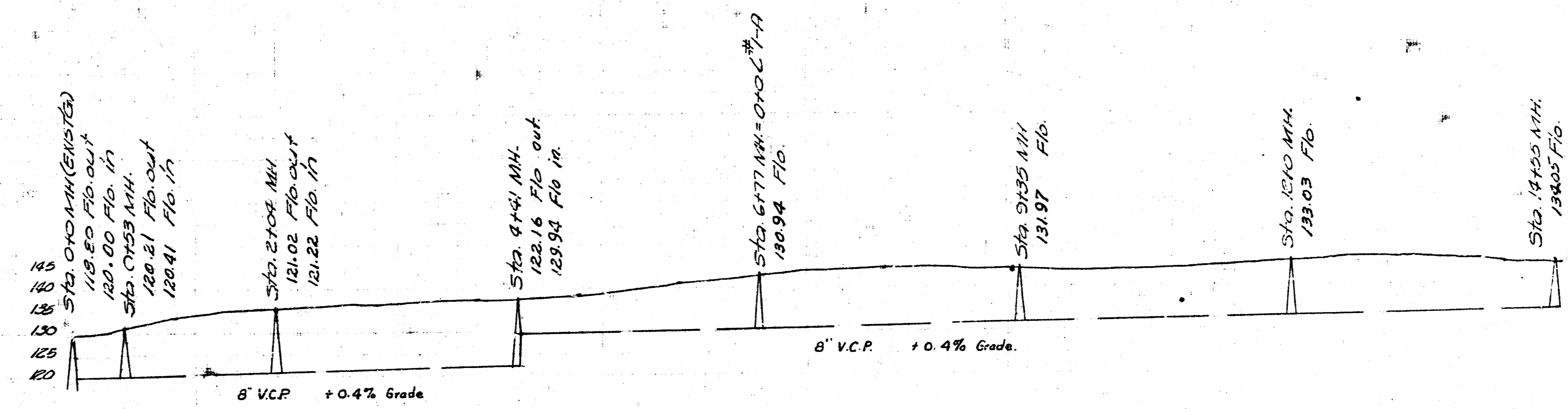
HORIZONTAL SECTION

DETAIL OF SPECIAL MANHOLE
Sta. 4+41

| Depth | 24" TRENCH | 27" TRENCH | 30" TRENCH |
|-------|------------|------------|------------|
| 8' | 13' | NONE | 10' |
| 10' | 17' | NONE | 14' |

Wet clay
Dry clay
Wet clay
Dry clay

NOTE:
If tapered basefill is not considered practical
do to condition of ditch, sandfill to the top
of pipe by the order of the City Engineer.



Sanitary Sewer Grandview Heights Addn
City of Wichita, Kansas
Private Job

