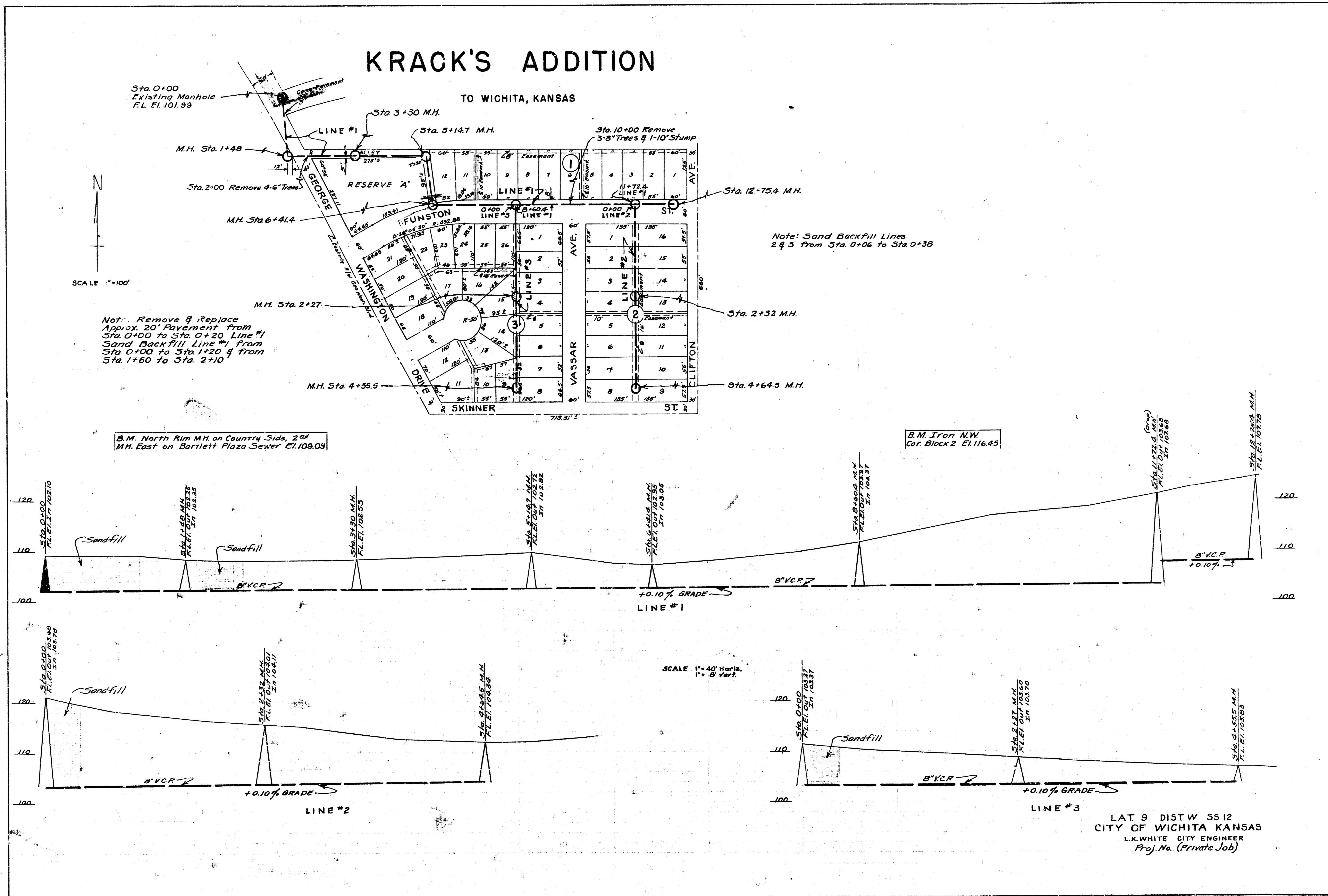


# KRACK'S ADDITION

TO WICHITA, KANSAS



Note: Remove & Replace  
Approx. 20' Pavement from  
Sta. 0+00 to Sta. 0+20 Line #1  
Sand Backfill Line #1 from  
Sta. 0+00 to Sta. 1+20 & from  
Sta. 1+60 to Sta. 2+10

Note: Sand Backfill Lines  
2 & 3 from Sta. 0+06 to Sta. 0+38

Date 4-23-51  
Drawn by J.L.A.  
Checked by  
Metc. Book No. M-10

LAT 9 DIST W SS 12  
CITY OF WICHITA KANSAS  
L.K. WHITE CITY ENGINEER  
Proj. No. (Private Job)